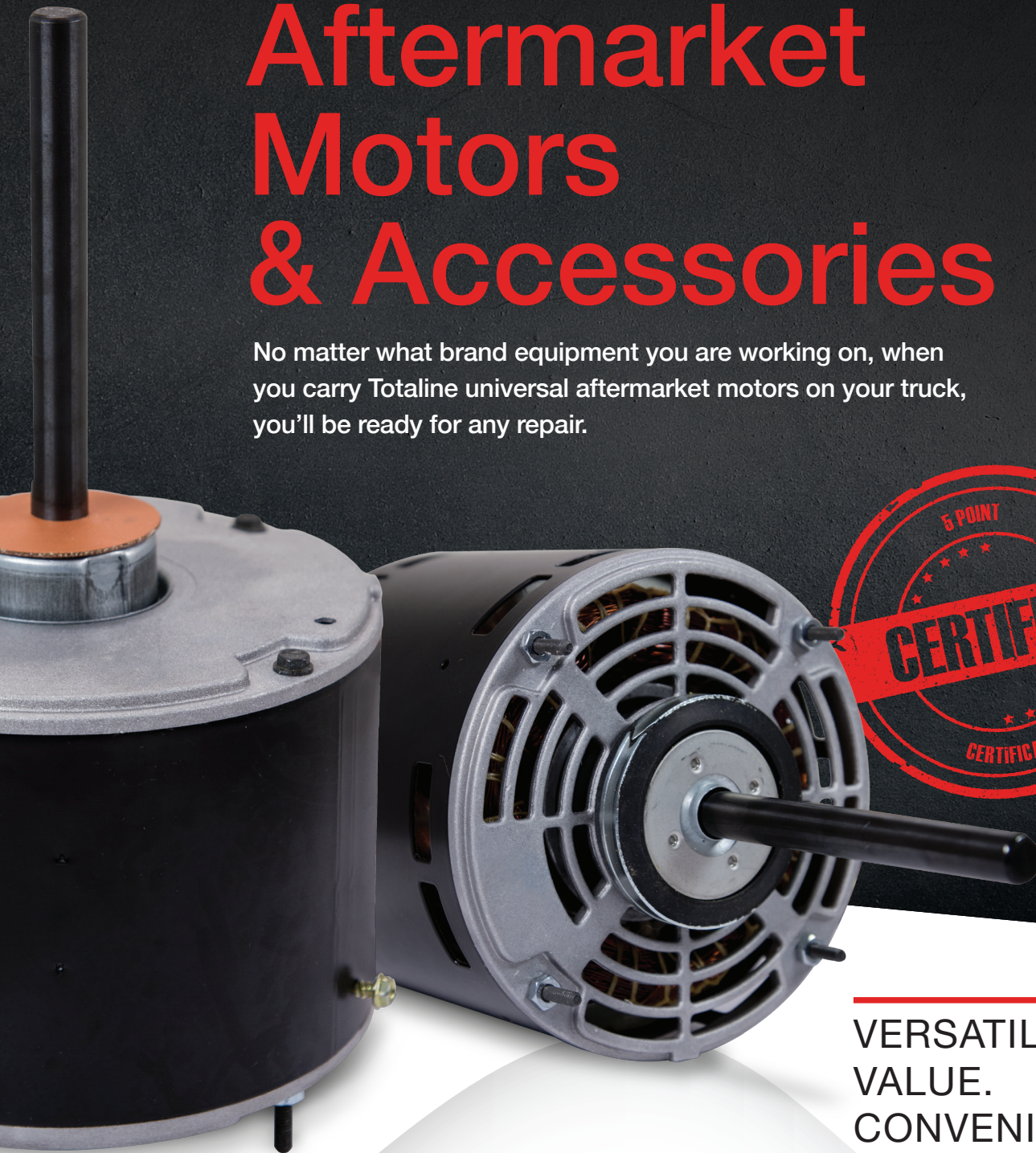


Aftermarket Motors & Accessories

No matter what brand equipment you are working on, when you carry Totaline universal aftermarket motors on your truck, you'll be ready for any repair.



VERSATILITY.
VALUE.
CONVENIENCE.



Universal HVAC/R
Parts and Supplies



TRUST TOTALINE
ON YOUR TRUCK

Ready for Anything

With our universal aftermarket motors & accessories you'll be prepared for any replacement job.



Motor Features



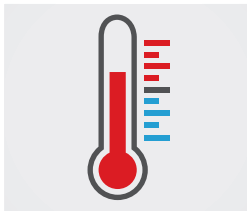
EXTENDED WIRES

Gives contractors flexibility on the installation



EXTENDED BOLTS

Easy one person installation, more flexibility to fit most brands



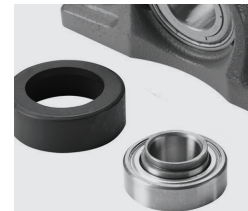
NEW HI TEMP MODELS

Full line-up of 70°C motors, Ideal for high ambient temperatures



UNIVERSAL SHELL MOUNTING HOLES

Allows for universal, easy mounting in other brands



BALL BEARINGS

Standard on condenser fans for performance and longer motor life



Our Five-Point Certification

Ensures every motor meets uncompromising quality standards. So you can be confident you're choosing the right motor for any replacement job.

PERFORMANCE VERIFICATION

RPMS, amps, rotation, temperature rise & capacitor voltage validated.

DESIGN LIFE

Manufactured to precise specs for lifespan of 10+ years with proper installation.

LOAD RATING

Thoroughly tested to ensure reliability under maximum load conditions.

SHIPPING & PACKAGING

Tested to ensure minimal vibration and maximum impact resistance during transit.

SAFETY

UL & CSA certified, all code requirements met.



Universal HVAC/R
Parts and Supplies

TABLE OF CONTENTS

MOTORS

General Information

Definitions	Page 4
Selection	Page 5
Installation Tips	Page 5
Tips to Identify A Motor Without A Nameplate	Page 6

Direct Drive Blower Motors

Totaline® - 115V, 208-230V	Page 7
Totaline® - Multi Horsepower	Page 7

Condenser Fan Motors

Totaline® - Totally Enclosed, All Position Mounting	Page 8
Totaline® - Multi-Horsepower	Page 8
Totaline® - High Temperature, Multi-Horsepower	Page 9
Totaline® - 460 Volt, High Temperature	Page 10
Totaline® Belted Blower Motors	Page 10

Belted Blower Motors

Totaline® - Split Phase	Page 11
Nidec - Split Phase	Page 11
Nidec - Capacitor Start	Page 12

Oil Burner Motors

Nidec - Single Phase	Page 13
--------------------------------	---------

Double Shaft Fan and Blower Motors

Nidec - PSC	Page 14
-----------------------	---------

Generic Replacement Motors

Evergreen® EM/CM - X13 Replacements	Page 13
Evergreen® IM - PSC Replacements	Page 11
Evergreen® Mounting Kits	Page 11

Commercial Baldor® HVAC Integral Motors, General Purpose

General Purpose, Three Phase ODP	Page 15
General Purpose, Three Phase TEFC	Page 16
Variable Torque, Three Phase ODP	Page 17

MOTOR ACCESSORIES

Universal Replacement Propellers

General Information	Page 18
Typical Applications	Page 18
Blade Shape	Page 18
Props for the Replacement Business	Page 18
Why Install a new Propeller?	Page 18
Propeller Vibration	Page 18
Pitch Selection	Page 18
Identifying Propeller Rotation	Page 18
Replacing a Propeller	Page 19
Horsepower Conversion Chart	Page 19
Safety Tips	Page 19
Hub Type Propellers (Aluminum Fixed Hub)	Page 20
Hubless Type (Interchangeable Hubs)	Page 20
Fixed Hub Propellers (2-Blade with 1/2" Bore)	Page 21
Heavy Duty Condenser Type (3-Blade)	Page 22-23
Heavy Duty Condenser Type (4-Blade)	Page 24-26

Propeller Accessories

Interchangeable Hubs	Page 26
--------------------------------	---------

Blower Wheels

Double Inlet Blower Wheels	Page 27-29
Single Inlet Blower Wheels	Page 30-32
Galvanized	Page 32

Totaline® Fan Belts

Fractional HP V-Belts	Page 33
Multiple V-Belts	Page 34-35
Narrow V-Belts, Cogged	Page 36

Browning Belts

FHP Belts	Page 37
Super Gripnotch® Belts	Page 37
Gripnotch® Belts	Page 38
"358" Gripbelt® and Gripnotch® Belts	Page 39
Cast Iron Sheaves	Page 40
Cast Iron Sheaves – Variable Pitch	Page 41

Totaline® Capacitors

General Information	Page 42
Oval Motor Run Capacitors - Dual	Page 43
Oval Motor Run Capacitor - Single	Page 44
Round Motor Run Capacitors - Dual and Single	Page 45

Parts & Accessories

Rainshields	Page 46
Rubber Fan Hub Cap	Page 47
Hub Pullers	Page 47
Replacement Parts for Hub Pullers	Page 47
Pitch Gauge	Page 47
TECInspect Diagnostic Tool	Page 47
ECM Motor Simulator Kit	Page 47
4-16 PIN Harness Adapter	Page 47
Totaline Bracket Kits	Page 48
Direct Drive Motor Mounting Brackets	Page 48
Bearing Brackets for Belt Drive Blowers	Page 49
Knock Down Bracket Kit	Page 49
Sleeve Bearing Bracket Kit	Page 49
Bearings	Page 49-52
Thrust Kits	Page 53
Vibro Pads	Page 53
Mounting Hardware	Page 53
Grommets	Page 53
Shafts	Page 54
Shaft Bushings	Page 54
Adjustable Motor Pulleys	Page 54



MOTOR INFORMATION

DEFINITIONS

SHADED POLE MOTORS

Single Phase

For use in light-duty appliances because of low efficiency, power factor and starting torque. These motors are only suitable for direct drive fan and blower applications.

PERMANENT-SPLIT CAPACITOR MOTORS

Single Phase

This type motor is similar to the shaded pole type but has higher efficiency and power factor. Starting torques are relatively low which limits application only for direct drive fan and blower applications.

SPLIT-PHASE MOTORS

Single Phase

Split-phase motors have moderate starting torque with low starting current. They are used where starting load is moderate and where there is frequent starting with relatively long running periods. Reversible.

CAPACITOR-START MOTORS

Single Phase

This type motor produces greater locked-rotor and accelerating torque per amp than the split phase type. With a higher starting torque than the split-phase type it can be used for driving compressors, pumps, air conditioning equipment and many other hard-to-start applications.

POLYPHASE-SQUIRREL CAGE INDUCTION MOTORS

Three Phase

Polyphase motors have a high starting torque combined with high efficiency and power factor which makes them suitable for use on larger compressors and commercial air conditioning units. Do not require capacitors or starting relays. Reversible.

DEFINITIONS FOR LISTING ON FOLLOWING MOTORS PAGES

HP: **Horsepower** - Power rating of the motor

FLA: **Full Load Amps** - Amperage drawn by a motor when operating at rated load and voltage.

NOTE: RCD may use several motor suppliers for any given part number. Therefore FLA listed represents maximum rating that could be encountered under a given part number.

RPM: Synchronous speed or full load speed

HZ: Frequency or Hertz

V: Voltage AC

REV: Rotation Reversible

° C: Ambient Rating

CAP: Capacitor Rating (i.e. 5.0 µf / 370 volts)

A: Amp rating at Full Load (i.e. 1.8A)

PSC: Permanent Split Capacitor motors

TE: Totally Enclosed Motor

OP: Open Enclosure

Speed: 1: Single Speed Motor

Mounting: Base, Stud, Strap

ROT **Rotation** - Motors rotate in either a clockwise (CW) or counterclockwise (CCW) direction. Rotation listed is per NEMA, as viewed from the end of the motor opposite the shaft. In the case of double shaft motors, the rotation is viewed from the lead end of motor.

SF: **Service Factor** - A measure of the overload capacity designed into a motor. A 1.15 SF means the motor can deliver 15% more than a rated horsepower without injurious overheating. A 1.0 SF motor should not be overloaded beyond its rated horsepower.

BRGS: Bearings - BALL or SAB Self Aligning Ball also referred to as sleeve

FRAME: An (R), (S) or (T) may appear in this column adjacent to the NEMA frame designation and is defined as follows:

(R) - Resilient mounting rings included

(S) - Motor is mounted on rigid base

(T) - Motor is equipped with extended thru-bolts required for thru-bolt mounting

DIA: **Diameter** of motor in inches

SHAFT: Length/Diameter (i.e. 6.5" / 1/2").

First shaft length listed is at lead end of dual shaft motors.

NOTE: RCD may use several motor suppliers for any given part number. Therefore, shaft length(s) listed represent maximum length(s) available under a given part number.

Protector: Internal Thermally Protected

MOTOR DIMENSIONS:

- A. Overall length of motor including shaft(s)
- B. Diameter of mounting bolt circle on motors supplied with mounting ears
- C. Shaft height - center of shaft to base on motors supplied with mounting base
- D. Diameter of mounting hole on motors supplied with mounting lugs

MOTOR SELECTION

When selecting either an indoor blower motor or outdoor condenser motor, always start with the following:

- **HP:** always try to use the same horsepower that was in the original equipment application, specifically within that frame size
- **RPM's:** selected should be in the $\pm 10\%$ range
- **AMPS:** never exceed the full load amps by more than $\pm 10\%$
- **Voltage:** should always be the same as the equipment
- **Capacitor:** may require a change to reflect the microfarads (μF) required by the motor (i.e. $5\mu\text{F}$ to $7.5\mu\text{F}$)

INSTALLATION TIPS



Before installing motors always measure the approximate propeller fan, or blower wheel location to make sure your final installation ends up in the same area in condenser orifices or blower housings to maintain the same air flow.

Make sure the hubs of the old fans or blower wheels are not stripped and the set screws are tight to the flat of the shaft.

Outdoor propeller fan blades flex during operation. Make sure you have enough clearance so that the fan blades do not contact the mounting screws of the motors on the shaft end. (If necessary, cut the installation screws back to avoid a fan hit.)



Motor must be securely and adequately grounded by wiring per NEC and local codes.



Universal HVAC/R
Parts and Supplies

MOTOR INFORMATION

TIPS TO IDENTIFY A MOTOR WITHOUT A NAMEPLATE

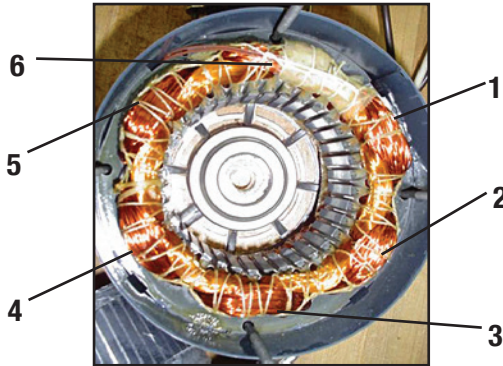
Motor Diameter: Measure diameter to confirm NEMA (National Electrical Manufacturers Association) frame size.
Frame size: 4.9" = 42, 5.6" = 48, 6.5" = 56

Motor Type: Shaded Pole (SP), Permanent Split Capacitor (PSC), Split Phase, Capacitor Start/Capacitor Run, Three Phase, and DC.

Speed: RPM = 120 x Hz / # Poles

@ 60Hz # Poles	Full Load Speed			
	Syn	SP	PSC	General Purpose
2	3600	3000	-	3450
4	1800	1500	1625	1725
6	1200	1050	1075	1140
8	900	-	825	850

Count # of Poles



Horsepower & Stack Lengths:

4 & 6 Pole Open Motors

HP	Approx. Stack Length
1/4	1.25"
1/3	1.50"
1/2	2.25"
3/4	2.50"

8 Pole Open Motors

HP	Approx. Stack Length
1/8	1.13"
1/6	1.25"
1/4	1.62"
1/3	2.25"

4 & 6 Pole Closed Motors

HP	Approx. Stack Length
1/4	1.25"
1/3	1.75"
1/2	2.50"
3/4	3.00"

8 Pole Closed Motors

HP	Approx. Stack Length
1/8	1.25"
1/6	1.38"
1/4	1.75"
1/3	2.50"



Measure Stack Height For HP

Number Of Speeds:

- Number Speeds = number of power leads minus 1.
- For SP - **Do not count** the ground (green) lead.
- For PSC - **Do not count** the ground (green) lead or the capacitor (brown) lead.

Mechanical Features:

- Mounting Definition - Base, Belly band, Lugs, Studs, Face mount, etc.
- Enclosure - ODP (Open Drip Proof), TE (Totally Enclosed), etc.
- Shaft - Number, Length, Diameter, Flat-Keyway, etc.
- Unique Features - Leads, Conduit Box, Bearings, Brake, Rotation Arrow, Capacitor Cover, Slingers, etc.

Rotation:

- Most standard motors (except Single Phase and Threaded Shaft) are reversible from standstill by electrical re-connection.
- Three phase motors reversed by interchanging any two of the three power leads.

Note: Rotation of an unknown motor is often found by noting attached fan, blower or other device. Dirt accumulates on the side towards which the motor rotates.

Voltage: Common Voltage

	115	230	Dual	277	460	575
SP	X	X	-	X	-	-
PSC	X	X	-	X	X	-
Split Ph	X	X	-	-	-	-
Cap Start	X	X	115/230	-	-	-
3 Phase	-	X	230/460	-	X	X

Note: Voltage may be difficult to determine. *Ask the customer!*

Typical Color Schemes (Not a standard):

- White - Common lead (115 volt)
- Yellow or Purple - Common lead (230 volt)
- Brown - Capacitor leads (1 or 2)(PSC Only)
- When replacing PSC a good practice is to replace the capacitor, too.
- Replace based on horsepower not AMP rating.
- Do not replace manual overload with automatic overload motor.
- Motors with similar stator dimensions will have output (other features being equal). i.e. It takes a similar amount of iron and copper (D2L) for torque.

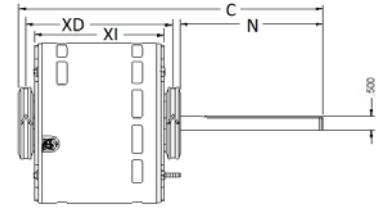
Some rules of thumb:

Generally if this is... (the original)	This can be used as a replacement
Shaded Pole	Permanent Split Capacitor Ball Bearing
Sleeve Bearings	Sleeve Bearing Totally Enclosed
Open or DP	Enclosed
1 Speed	1, 2 or 3 Speed
2 Speed	2 or 3 Speed
370 Volt Capacitor	370 or 460 Volt Capacitor

DIRECT DRIVE BLOWER MOTORS

TOTALINE® DIRECT DRIVE BLOWER MOTORS

Totaline Direct Drive Blower Motors are three speed standard efficiency, reversible rotation with extended thru bolts and resilient rings for base mounting. These models have open air enclosures and feature shell mounting holes for universal replacement of non-ventilated motors for exhaust, air circulators, unit heaters, unit coolers, and other air-over applications.



- 3 Speeds, Electrically reversible
- Continuous Air Over 40°C Ambient Design
- All Angle Sleeve Bearings
- Extended Thru Bolt
- Automatic Reset Thermal Overload Protector
- 2 1/4" Resilient Rings
- Single Phase, 60 HZ
- Class B insulation

STANDARD EFFICIENCY

PART	HP	VOLTAGE	AMPS	RPM	BRGS	HZ	DIMENSION TOTAL	DIMENSION BODY	SHAFT DIA & LENGTH (IN)	CAPACITOR	CAPACITOR PART
P257-8583	1/4	115	3.8	1075/3	SAB	60	9.4	4.3	1/2" X 4"	10/370	P291-1003
P257-8585	1/3	115	5.0	1075/3	SAB	60	9.7	4.6	1/2" X 4"	10/370	P291-1003
P257-8587	1/2	115	6.0	1075/3	SAB	60	10.2	5.1	1/2" X 4"	10/370	P291-1003
P257-8589	3/4	115	9.5	1075/3	SAB	60	10.7	5.6	1/2" X 4"	15/370	P291-1503
P257-8584	1/4	208-230	1.6	1075/3	SAB	60	9.4	4.3	1/2" X 4"	10/370	P291-1003
P257-8586	1/3	208-230	2.2	1075/3	SAB	60	9.7	4.6	1/2" X 4"	10/370	P291-1003
P257-8588	1/2	208-230	2.7	1075/3	SAB	60	10.4	5.3	1/2" X 4"	10/370	P291-1003
P257-8590	3/4	208-230	4.0	1075/3	SAB	60	10.7	5.6	1/2" X 4"	15/370	P291-1503

MULTI-HORSEPOWER

PART	HP	VOLTAGE	AMPS	RPM	BRGS	HZ	DIMENSION TOTAL	DIMENSION BODY	SHAFT DIA & LENGTH (IN)	CAPACITOR	CAPACITOR PART
P257-E5460	1/2-1/6	115	7.3	1075/4	SAB	60	10.4	4.9	1/2" x 5"	10/370	P291-1003
P257-E5470	3/4-1/5	115	8.1	1075/4	SAB	60	12.2	6.1	1/2" x 5"	20/370	P291-2003
P257-E5461	1/2-1/6	208-230	3.6	1075/4	SAB	60	10.4	4.9	1/2" x 5"	10/370	P291-1003
P257-E5471	3/4-1/5	208-230	3.8	1075/4	SAB	60	12.2	6.1	1/2" x 5"	20/370	P291-2003



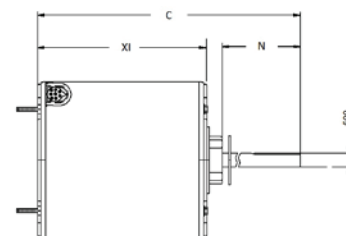
Universal HVAC/R
Parts and Supplies

CONDENSER FAN MOTORS

TOTALINE® CONDENSER FAN MOTORS

TOTALLY ENCLOSED - ALL POSITION MOUNTING

Totaline Condenser Fan Motors are designed as a universal PSC replacement for vertical shaft- up or shaft-down applications. Shell and end shields are closed for protection against weather. All Totaline Condenser Fan Motors feature reversible rotation and thru bolt or band mounting for air conditioning or heat pump applications.



- 5.6" Diameter, Totally Enclosed Air Over TEAO
- 60°C (140°F) Ambient Design
- Ball Bearings
- Extended Studs, All Angle Mount
- 30" Leads
- Rheem shell mounting holes
- Reversible Rotation

- Automatic Reset Thermal Overload Protector
- Continuous Duty
- Single Phase, 60 HZ
- Class B Insulation
- NEMA Frame 48

PART	HP	VOLTAGE	AMPS	RPM	BRGS	HZ	DIMENSION TOTAL	DIMENSION BODY	SHAFT DIA & LENGTH (IN)	CAPACITOR	CAPACITOR PART
P257-8727	1/6	208-230	1.2	1075/1	BALL	60	10.6	4.1	1/2" X 6"	10/370	P291-1003
P257-8728	1/4	208-230	1.4	1075/1	BALL	60	10.9	4.3	1/2" X 6"	5/370	P291-0503
P257-8729	1/3	208-230	2.0	1075/1	BALL	60	11.4	4.8	1/2" X 6"	7.5/370	P291-0753
P257-8730	1/2	208-230	3.0	1075/1	BALL	60	11.6	5.6	1/2" X 6"	10/370	P291-1003
P257-8731	3/4	208-230	3.9	1075/1	BALL	60	12.8	5.8	1/2" X 6"	15/370	P291-1503
P257-3203	1/6	208-230	1.0	825/1	BALL	60	10.6	4.1	1/2" X 6"	5/370	P291-0503
P257-3204	1/4	208-230	2.0	825/1	BALL	60	10.9	4.3	1/2" X 6"	5/370	P291-0503
P257-3205	1/3	208-230	2.4	825/1	BALL	60	11.0	4.5	1/2" X 6"	7.5/440	P291-0754
P257-3206	1/2	208-230	2.8	825/1	BALL	60	12.4	5.8	1/2" X 6"	10/370	P291-1003

TOTALINE® CONDENSER FAN MOTORS

MULTI-HORSEPOWER

Totaline Multi Horse-Power Condenser Fan Motors are ideal for truck stock. Two models cover 1075 RPM applications, 208-230V from 1/6 to 1/2 HP. One model covers 825RPM applications, 208-230V from 1/6 to 1/3 HP.

- Ideal for Truck Stock
- Ball Bearings
- Reversible Rotation
- Rheem shell mounting holes

- All position Mount
- Single Phase, 60 HZ
- Class B insulation
- NEMA Frame 48



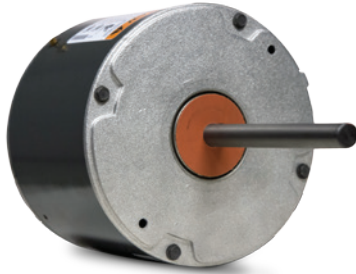
PART	HP	VOLTAGE	AMPS	RPM	BRGS	HZ	DIMENSION TOTAL	DIMENSION BODY	SHAFT DIA & LENGTH (IN)	CAPACITOR	CAPACITOR PART
P257-E5462	1/3-1/6	208-230	2.6	1075/2	BALL	60	9.6	4.6	1/2" x 5"	5/370	P291-0503
P257-E5465	1/2-1/5	208-230	3.0	1075/2	BALL	60	10.3	5.3	1/2" x 5"	10/370	P291-1003
P257-E5464	1/3-1/6	208-230	1.9	825/2	BALL	60	10.3	5.3	1/2" x 5"	7.5/370	P291-0753

CONDENSER FAN MOTORS

TOTALINE® HIGH TEMPERATURE CONDENSER FAN MOTORS 70 °C

Totaline High Temperature Condenser Fan Motors feature 70°C (158°F) Ambient Design. All angle mounting position for universal versatility.

**High
Temp**



- Totally Enclosed Air Over TEAO
- 48" Leads, Extended Studs, 5.6" Diameter
- Drain Holes Both Ends
- Hubless Lead End
- Reversible Rotation
- Automatic Reset Thermal Overload Protector
- Continuous Duty
- Single Phase, 60 HZ
- Class F insulation
- NEMA Frame 48

PART	HP	VOLTAGE	AMPS	RPM	BRGS	HZ	DIMENSION TOTAL	DIMENSION BODY	SHAFT DIA & LENGTH (IN)	CAPACITOR	CAPACITOR PART
P257-3726HS	1/6	208-230	1.0	1075/1	BALL	60	10.4	3.8	1/2" X 6"	5/370	P291-0503
P257-3732HS	1/4	208-230	1.5	1075/1	BALL	60	11.6	4.6	1/2" X 6"	5/370	P291-0503
P257-3733HS	1/3	208-230	1.8	1075/1	BALL	60	12.1	5.1	1/2" X 6"	7.5/370	P291-0753
P257-3734HS	1/2	208-230	3.3	1075/1	BALL	60	12.3	5.8	1/2" X 6"	10/370	P291-1003
P257-3735HS	3/4	208-230	4.7	1075/1	BALL	60	12.4	5.8	1/2" X 6"	10/370	P291-1003
P257-3204HS	1/4	208-230	2.1	825/1	BALL	60	10.9	4.3	1/2" X 6"	5/370	P291-0503
P257-3205HS	1/3	208-230	2.4	825/1	BALL	60	11.6	5.1	1/2" X 6"	7.5/370	P291-0754

MULTI-HORSEPOWER

PART	HP	VOLTAGE	AMPS	RPM	BRGS	HZ	DIMENSION TOTAL	DIMENSION BODY	SHAFT DIA & LENGTH (IN)	CAPACITOR	CAPACITOR PART
P257-3458HS	1/3-1/6	208-230	2.0	1075/1	BALL	60	10.9	4.3	6.0	7.5/370	P291-0753
P257-3459HS	1/3-1/5	208-230	2.4	825/1	BALL	60	11.6	5.1	6.0	7.5/440	P291-0754



Universal HVAC/R
Parts and Supplies

CONDENSER FAN MOTORS

TOTALINE® 460V HIGH TEMPERATURE CONDENSER FAN MOTORS



- 70°C
- All angle mounting position
- Rheem mounting holes
- Extended through bolts
- 48" leads
- Class F insulation
- NEMA Frame 48

PART	HP	VOLTAGE	AMPS	RPM	BRGS	HZ	DIMENSION TOTAL	DIMENSION BODY	SHAFT DIA & LENGTH (IN)	CAPACITOR	CAPACITOR PART
P257-3736HS	1/4	460	0.8	1075/1	BALL	60	11.1	4.6	6.0	7.5/370	P291-0753
P257-3737HS	1/3	460	1.0	1075/1	BALL	60	11.6	5.1	6.0	7.5/370	P291-0753
P257-3738HS	1/2	460	1.5	1075/1	BALL	60	12.0	5.3	6.0	10/370	P291-1003
P257-3739HS	3/4	460	2.0	1075/1	BALL	60	12.9	6.3	6.0	10/370	P291-1003

TOTALINE® BELTED BLOWER MOTORS

THREE PHASE



- Commercial Condenser Fan
- Open Drip-Proof, Air Over
- 56 Frame
- Ball Bearings
- Reverse Rotation
- Auto Thermal Overload Protector
- Class B
- Belly Band Mount, Flat and Keyway on Shaft

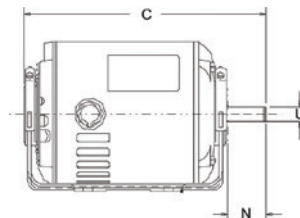
PART	HP	VOLTAGE	RPM	BRGS	AMPS	SHELL N	SHELL XI	TOTAL C	SHAFT DIA.	SHIP WT
P257-E379	1	208-230/460	1140	BALL	4.2/2.1	6.0	0.625	14.8	0.0625	27.3
P257-E380	1 1/2	208-230/460	1140	BALL	5.4/2.7	6.0	0.625	15.8	0.0625	35

BELTED BLOWER MOTORS

TOTALINE® SPLIT PHASE BELTED BLOWER



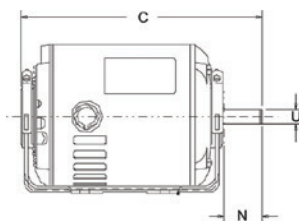
- Open Drip-Proof, Single Speed
- Resilient Base
- With Threaded Conduit Hole
- Reversible Rotation
- Automatic Reset Thermal Overload Protector



PART	HP	VOLTAGE	RPM	BRGS	AMPS	NEMA FRAME	CLASS	SHAFT N	SHAFT U	TOTAL C	SHIP WT.
P267-9305	1/4	115	1725	BALL	5.3	48	B	1.5	0.5	8.9	13
P267-9308	1/3	115	1725	SAB	5.8	56Z	A	1.5	0.500	8.9	18
P267-9758	1/2	115/230	1725	SAB	8.0/4.0	56	B	1.9	0.625	9.8	22

NIDEC SPLIT PHASE BELTED BLOWER MOTORS

- Split Phase Belted Blower
- Open Drip-Proof



SINGLE SPEED

PART	HP	VOLTAGE	RPM	BRGS	AMPS	NEMA FRAME	CLASS	SHAFT N	SHAFT U	TOTAL C	SHIP WT.
4114	1/2	115/230	1725	SAB	8.0/4.0	56	B	1.9	0.625	9.8	22

TWO SPEED

PART	HP	VOLTAGE	RPM	BRGS	AMPS	NEMA FRAME	CLASS	SHAFT N	SHAFT U	TOTAL C	SHIP WT.
4293	1/2	115	1725/1140	SAB	9.2/6.0	56	A	1.9	0.625	10.8	26

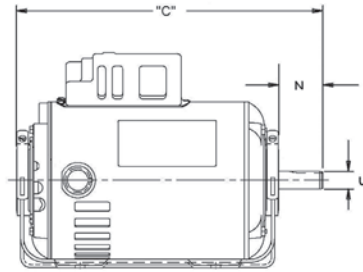


Universal HVAC/R
Parts and Supplies

BELTED BLOWER MOTORS

NIDEC CAPACITOR START BELTED BLOWER

OPEN DRIP-PROOF, RESILIENT BASE

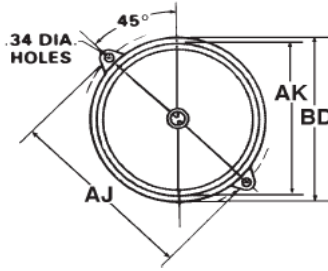


- 40°C Ambient
- Class A Insulation
- Reversible Rotation
- Suitable for All Angle
- Automatic Reset Thermal Overload Protector
- Threaded Conduit Hole

PART	HP	VOLTAGE	RPM	AMPS	ROT	THERMAL OVERLOAD PROTECTOR	CLASS	SHAFT N	SHAFT U	TOTAL C	SHIP WT.
1790	1/2	115/208-230	1725	2.4	REV	Auto	A	1.9	0.625	9.3	22
1893	3/4	115/208-230	1725	2.6	REV	Auto	A	1.9	0.625	10.8	27
1769	1	115/208-230	1725	3.1	REV	Auto	A	1.9	0.625	11.8	29

OIL BURNER MOTORS

NIDEC OIL BURNER MOTORS (60 HERTZ) SINGLE PHASE



- 40°C Ambient
- 20" Leads, Located at 3 O'clock Viewed
- From End Opposite Shaft
- 48M and 48N Flange Are Ventilated
- Bearings Have All Angle Thrust System
- Ball Bearings
- NEMA Frame 48N

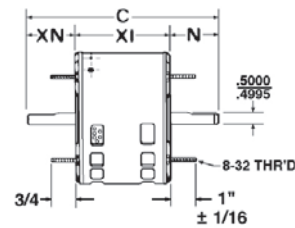
PART	HP	VOLTAGE	RPM	AMPS	ROT	THERMAL OVERLOAD PROTECTOR	CLASS	SHAFT N	SHAFT U	TOTAL C	SHIP WT.	NOTE
3196	1/8	115	1725	2.4	Reversible	Manual	A	2.0	0.500	7.6	14	Removable Face Plate
3083	1/7	115	3450	2.6	Reversible	Manual	F	2.0	0.500	7.3	11	
3252	1/6	115	1725	3.1	Reversible	Manual	B	2.0	0.500	7.6	15	
3274	1/7	115	3450	1.7	Non-Reversible	Auto	F	2.0	0.500	7.2	11	3.7" Body, PSC motor capacitor included

* Motor leads - 21 inches long, 18 gauge. ** Motor leads -24" long #18 50 2-conductor out shell at 11 o'clock position.

NIDEC DOUBLE SHAFT FAN MOTORS PERMANENT SPLIT CAPACITOR DOUBLE SHAFT FAN & BLOWER



- 5.6 Diameter
- Open Dripproof, Air Over
- Multi-Speed
- Hub or Stud Mount, Hub Rings are 2 1/4" Diameter, Furnished Detached with ExtraMetal Rings for Adapting to 2 1/2" Diameter
- CCW Rotation Lead End
- 40°C Ambient, 60 HZ
- Class B Insulation



PART	HP	VOLTAGE	RPM	AMPS	ROT	THERMAL OVERLOAD PROTECTOR	SHAFT N	SHAFT XN	SHELL XL	TOTAL C	SHIP WT.
NAL1016	1/6	115	1075/3	2.4	CCW LE	Auto	10	6.75	5.625	22.0	10
NA1016	1/6	208-230	1075/3	2.6	CCW LE	Auto	9	6.75	5.625	22.0	9
NA1026	1/4	208-230	1075/3	3.1	CCW LE	Auto	11	6.75	5.625	22.0	11
NA1036	1/3	208-230	1075/3		CCW LE	Auto	14	6.25	5.625	22.0	14
NA1056	1/2	208-230	1075/3		CCW LE	Auto	16	6.75	5.625	22.0	16



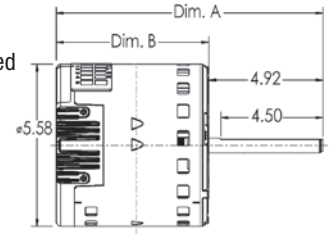
Universal HVAC/R
Parts and Supplies

GENERIC REPLACEMENT MOTORS

EVERGREEN® EM/CM X-13 REPLACEMENT MOTORS



- Replaces X-13 or Endura Pro
- Replaces competitive OEM's Direct-Drive Blower motors designed with X-13 or equivalent competitive model constant torque standard
- ECM with 24VAC speed taps
- Available in 1/3, 1/2, 3/4 and 1HP ratings
- 115V or 208-230V single phase, 50/60 HZ, 1070rpm
- Pre-Programmed - 5 discrete speeds using 24VAC
- Permanently lubricated ball bearings
- NEMA 48 Frame, UL and CSA recognized
- Automatic Dual Rotation
- Two Year Warranty



DOES NOT REPLACE MODELS 2.3, Eon, 2.5, 3.0 or 142R

PART	HP	VOLTAGE	MAX CURRENT	ROTATION	DIM A	DIM B	WEIGHT
6103E	1/3	115	4.8 A	CCW/CW	10.17"	5.25"	8.4
6105E	1/2	115	6.8 A	CCW/CW	10.67"	5.75"	11.3
6107E	3/4	115	8.4 A	CCW/CW	11.42"	6.5"	15.6
6110E	1	115	10.9 A	CCW/CW	12.17"	7.25"	19.3
6203E	1/3	208-230	2.8 A	CCW/CW	10.17"	5.25"	8.4
6205E	1/2	208-230	4.1 A	CCW/CW	10.67"	5.75"	11.3
6207E	3/4	208-230	6.0 A	CCW/CW	11.42"	6.5"	15.6
6210E	1	208-230	7.6 A	CCW/CW	12.17"	7.25"	19.3
6703	1/3	208-230/277V	2.8 A	CCW/CW	9.17"	5.25"	8.3
6705	1/2	208-230/277V	4.1 A	CCW/CW	9.67"	5.75"	11.3
6707	3/4	208-230/277V	6.0 A	CCW/CW	10.42"	6.5"	15.5

EVERGREEN® IM PSC REPLACEMENT MOTORS

- Replaces competitive OEM's Direct-Drive Blower motors designed with a 6-pole 1075rpm rated PSC motor.
- 2 Multi-HP Models Available: 1/2HP (1/5-1/2) and 1HP rating (1/2-1)
- Dual voltage 115/230V single phase input, 50/60Hz
- 4 discrete speeds using 24VAC, plus automatic continuous fan speed, Efficiency up to 80%
- NEMA 48 Frame, UL and CSA recognized
- Automatic Dual Rotation
- Two Year Warranty

DOES NOT REPLACE ANY EXISTING ECM

PART	HP	VOLTAGE	MAX CURRENT	ROTATION	DIM A	DIM B	WEIGHT
6005	1/5-1/2	115/230	6.7/4.0 A	CCW/CW	11.26"	6.34"	12.0
6010	1/2-1	115/230	11.0/6.7 A	CCW/CW	7.84"	7.84"	20.0

EVERGREEN® MOUNTING KITS

Mounting Kit includes motor support, grommet centers, grommet rings, sleeve spacers, bolts, nuts and washers

PART	DIAMETER
5K003	10"
5K004	11"
5K005	13"

BALDOR® HVAC INTEGRAL MOTORS

GENERAL PURPOSE, THREE PHASE ODP

- Heavy Gauge Steel Frame Construction
- Balanced Rotors for Reduced Vibration and Quiet Operation
- Suitable Mounting For Any Position
- Available in 1-75 HP - ask us for a quote
- Made in USA



PART	HP	VOLTAGE	PH	RPM	ENCL	FRAME
EM3116T	1	230, 460	3	1800	ODP	143T
EM3154T	1.5	230, 460	3	1800	ODP	145T
EM3154T-5	1.5	575	3	1800	ODP	145T
EM3157T	2	230, 460	3	1800	ODP	145T
EM3211T	3	230, 460	3	1800	ODP	182T
EM3218T	5	230, 460	3	1800	ODP	184T
EM3218T-8	5	230, 460	3	1800	ODP	184T
EM3311T	7.5	230, 460	3	1800	ODP	213T
EM3311T-8	7.5	200	3	1800	ODP	213T
EM3313T	10	230, 460	3	1800	ODP	215T
EM2513T	15	230,460	3	1800	ODP	254T
EM2515T	20	230,460	3	1800	ODP	256T
EM2531T	25	230,460	3	1800	ODP	284T
EM2535T	30	230,460	3	1800	ODP	286T
EM2536T	30	230,460	3	1800	ODP	326T
EM2539T	40	230,460	3	1800	ODP	324T

WITH SHAFT GROUNDING RING INSTALLED INTERNALLY (CLASS H MOTOR)

PART	HP	VOLTAGE	PH	RPM	ENCL	FRAME
EM3211T-G	3	230, 460	3	1800	ODP	182T
EM3218T-G	5	230, 460	3	1800	ODP	184T
EM2513T-G	15	230, 460	3	1800	ODP	254T
EM2539T-G	40	230, 460	3	1800	ODP	324T

F2 MOUNT - FOOT MOUNTED

PART	HP	VOLTAGE	PH	RPM	ENCL	FRAME
EFM2513T	15	230/460	3	1800	ODP	254T
EFM2515T	20	230/460	3	1800	ODP	256T
EFM3211T	3	230/460	3	1800	ODP	182T
EFM3218T	5	208-230/460	3	1800	ODP	184T
EFM3311T	7.5	230/460	3	1800	ODP	213T
EFM3313T	10	230/460	3	1800	ODP	215T



Universal HVAC/R
Parts and Supplies

COMMERCIAL MOTORS

BALDOR® HVAC INTEGRAL MOTORS

GENERAL PURPOSE, THREE PHASE TEFC



- Energy saving applications where continuous operation is required
- Suitable for use with inverter drives for variable torque and constant torque ratings.
- Class F Insulation
- Low-loss electrical grade lamination steel
- Made in USA

PART	HP	VOLTAGE	PH	RPM	ENCL	FRAME
EM3546T	1	230, 460	3	1800	TEFC	143T
EM3554T	1.5	230, 460	3	1800	TEFC	145T
EM3558T	2	230, 460	3	1800	TEFC	145T
EM3611T	3	230, 460	3	1800	TEFC	182T
EM3615T	5	230, 460	3	1800	TEFC	184T
EM3710T	7.5	230, 460	3	1800	TEFC	213T
EM3714T	10	230, 460	3	1800	TEFC	215T
EM2333T	15	230, 460	3	1800	TEFC	254T
EM2334T	20	230, 460	3	1800	TEFC	256T
EM4103T	25	230, 460	3	1800	TEFC	284T
EM4104T	30	230, 460	3	1800	TEFC	286T
EM4110T	40	230, 460	3	1800	TEFC	324T

WITH SHAFT GROUNDING RING INSTALLED INTERNALLY (CLASS H MOTOR)

PART	HP	VOLTAGE	PH	RPM	ENCL	FRAME
EM3546T-G	1	230, 460	3	1800	TEFC	143T
EM3615T-G	5	230, 460	3	1800	TEFC	184T

F2 MOUNT - FOOT MOUNTED

PART	HP	VOLTAGE	PH	RPM	ENCL	FRAME
EFM3611T	3	208-230/460	3	1800	TEFC	182T
EFM 3615T	5	208-230/460	3	1800	TEFC	184T
EFM 3710T	7.5	208-230/460	3	1800	TEFC	213T

BALDOR® HVAC INTEGRAL MOTORS

VARIABLE TORQUE, THREE PHASE, ODP

- Heavy-gauge steel frame construction
- Dynamically balanced rotors for reduced vibration
- Suitable for mounting in any position
- HM models meet EPCAct efficiencies
- H3M and EH3M motors use low profile top-mounted conduit box
- EHM models are above EPCAct efficiency, but do not meet NEMA Premium efficiencies
- Made in USA



HM MODELS MEET EPCACT EFFICIENCIES

MOTOR	HP	VOLTAGE	PH	RPM	ENCL	FRAME
34H777X488	1	230, 460	3	1800	ODP	56
HM9214T	1.5	208-230, 460	3	1800	ODP	145T
HM9218T	2	208-230, 460	3	1800	ODP	145T

EHM MODELS ARE ABOVE EPCACT EFFICIENCY, BUT DO NOT MEET NEMA PREMIUM EFFICIENCIES

MOTOR	HP	VOLTAGE	PH	RPM	ENCL	FRAME
EHM2515T	20	208-230, 460	3	1800	ODP	256T
EHM2523T	15	208-230, 460	3	1800	ODP	254T
EHM3211T	3	208-230, 460	3	1800	ODP	182T
EHM3218T	5	208-230, 460	3	1800	ODP	184T
EHM9214T	1.5	208-230, 460	3	1800	ODP	145T

H3M AND EH3M MOTORS USE LOW PROFILE TOP-MOUNTED CONDUIT BOX

MOTOR	HP	VOLTAGE	PH	RPM	ENCL	FRAME
H3M9218T	2	208-230, 460	3	1800	ODP	145T
H3M9221T	3	208-230, 460	3	3600	ODP	145T
H3M9122T	3	208-230, 460	3	1800	ODP	182T
H3M9225T	5	208-230, 460	3	3600	ODP	182T
H3M9232T	10	208-230, 460	3	1800	ODP	215T
H3M9135T	15	208-230, 460	3	1800	ODP	254T
H3M9233T	15	208-230, 460	3	3600	ODP	215T
EH3M9214T	1.5	230, 460	3	1800	ODP	145T
EH3M9221T	3	230, 460	3	3600	ODP	145T
EH3M9122T	3	230, 460	3	1800	TEFC	182T
EH3M9125T	5	208-230, 460	3	3600	TEFC	184T
EH3M9126T	5	230, 460	3	1800	TEFC	184T
EH3M9128T	7.5	230, 460	3	3600	TEFC	213T
EH3M9129T	7.5	230, 460	3	1800	TEFC	213T
EH3M9135T	15	230, 460	3	1800	TEFC	254T
35W928Q056G1	5	230, 460	3	3600	ODP	182T
EH3M9228T	7.5	230, 460	3	3600	ODP	184T
EH3M9229T	7.5	230, 460	3	1800	ODP	213T
EH3M9232T	10	230, 460	3	1800	ODP	215T
EH3M9235T	15	230, 460	3	1760	ODP	254T



Universal HVAC/R
Parts and Supplies

UNIVERSAL REPLACEMENT PROPELLERS

UNIVERSAL REPLACEMENT PROPELLERS INFORMATION

GENERAL INFORMATION

The simplest form of an axial fan consists of a propeller, usually with three to five aluminum blades mounted in a venturi. This type of fan finds wide use in applications requiring high air volumes at low static pressures. The performance characteristics of propellers may vary in many ways. Some general guidelines are:

- Increased blade pitch increases CFM and HP
- Decreased blade pitch decreases CFM and HP
- Increasing the number of blades increases static pressure characteristics

ADVANTAGES OF PROPELLERS

- Straight through air flow pattern
- Low cost
- Light weight
- High volume

TYPICAL APPLICATIONS

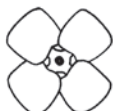
- Roof Top Unit Heaters
- Condensing Units
- Walk-In Refrigeration Units
- Pedestal Fans, Mancoolers, Ventilating Fans

BLADE SHAPE

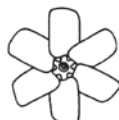
There are only three basic shapes that are of interest in the propeller selection - round, wide pressure blade and narrow pressure blade.



Round



Wide



Narrow

The round blades are used for free air delivery and low pressure applications, and are quieter.

The wide pressure blade is used in most applications operating at substantial static pressures. It has excellent pressure characteristics and reasonable noise levels.

The narrow pressure blade is generally used in applications where higher static pressure exists, such as multi-row coils or places where minimum axial depth is necessary.

PROPS FOR THE REPLACEMENT BUSINESS

BOTH FREE AIR AND CONDENSER DESIGNS

- 2-, 3-, 4-, 5-, and 6-Blade Propellers
- Up to 60" in diameter, up to 40° pitches
- Hubs and Bushings: 1/4" to 1 7/16" bore

WHY INSTALL A NEW PROPELLER?

Propeller balance is sensitive and can be negatively affected by slight pressure. Simply resting the motor and propeller assembly on the ground after disassembly from a condensing unit may result in an unbalanced propeller. This is especially true of original equipment propellers, as they are constructed of lighter gauge material. If a puller must be used to remove a prop from a motor shaft, it is very likely that the propeller will be distorted from the pressure.



PROPELLER VIBRATION

Propellers are, by nature, rather flexible and subject to vibration. Commercially available propellers will have a number of natural frequencies occurring as different parts of the propeller vibrate, or as they vibrate in different modes. Lau exercises great care in designing propellers so natural frequencies do not occur at frequencies normally found in systems.

PITCH SELECTION

A pitch gauge is used to measure the pitch and rotation of a propeller.

- Pitch is measured at the spider lobe
- Consult the chart for pitch selection to avoid motor overload
- Make certain that the propeller horsepower does not exceed the motor horsepower
- On "Free Air" type propellers, use the brake horsepower published under the RPM in the performance chart
- On "Condenser" type applications, where static pressure is unknown, use the brake horsepower published at .3" static pressure for the appropriate RPM

IDENTIFYING PROPELLER ROTATION

- The direction of rotation of a propeller is determined to be clockwise (CW) or counter-clockwise (CCW) when viewed from the air discharge side (the cupped side of the blade)
- The discharge side is the concave ("cupped") side of the blade

EASY "SANDBOX METHOD"

METHOD OF DETERMINING ROTATION

- Imagine standing in a sandbox and dropping the propeller face up or face down on the sand. Regardless of which side is up, the direction of rotation is the same as the direction required to turn the propeller into the sand.

Specifications are subject to change without notice or obligation.

UNIVERSAL REPLACEMENT PROPELLERS

UNIVERSAL REPLACEMENT PROPELLERS INFORMATION

REPLACING A PROPELLER

1. Disconnect electrical power
2. Note the location fo the current propeller in the unit. Remove current propeller from motor shaft with the proper type of puller
3. Remove burrs and/or rust from motor shaft
4. Locate interchangeable hub on desired side of propeller. Attach hub to propeller with three screws. Tighten screws to approximately 30 in-lbs
5. Place propeller on motor shaft in the unit, place the propeller in approximately the same position as the old propeller
6. Make sure that the propeller will be rotating in the correct direction
7. Fasten the propeller to the motor shaft by tightening set screws securely. Be sure to align setscrew on flat of the motor shaft
8. Rotate the propeller by hand to make sure that the blades clear any obstructions by at least 1/4"

HOW TO REPLACE A 3-BLADE PROPELLER WITH A 4 OR 5-BLADE PROPELLER

1. Find the closest match to current blade from the data in the catalog
 - Match number of blades of the original propeller you are replacing
 - Match diameter of the original blade you are replacing
 - Match pitch (as closely as possible) to the original blade you are replacing
 - Check direction of rotation
2. Check current motor RPM for the existing blade
3. Check the Lau catalog technical data for the closest matching 3-blade replacement propeller's CFM and HP required
4. Find a propeller with same diameter and a different number of blades
5. Following the row for the motor's speed, find a propeller with CFM closest to original blade
 - Make sure the CFM is equal or greater to CFM of the blade you are replacing
 - Do NOT replace existing blade with a propeller that has a lower CFM
6. Ensure new blade's HP required is less than the nameplate rating of the motor.
 - If BHP exceeds nameplate rating, use prop wth less CFM until HP is under nameplate rating on motor

Safety Tips:

Avoid personal injury and/or equipment damage. **Do not** exceed recommended RPM shown in charts.

Lau propellers are 100% inspected and precision balanced. Identification labels are applied to blades BEFORE balancing. Removal of a Lau label and/or adding additional labels to propeller blades can affect balance.

DID YOU KNOW?

You can replace a 3-blade condenser fan with a 4-blade or 5-blade fan. If you do this, choose a replacement that matches the CFM required as nearly as possible. Ensure the brake HP required **does not** exceed the nameplate rating of the motor.

NOTE: If minimum HP required for a fan blade is .501 the motor must be more than 1/2 HP motor.

HORSEPOWER CONVERSION CHART

Use to convert decimal horsepower to commonly available fractional horsepower motors.
(For watt conversion, use the formula 745.7 watts = 1 HP)

DECIMAL HORSEPOWER																	
.010	0.014	0.017	0.020	0.025	0.033	0.040	0.050	0.067	0.083	0.100	0.125	0.167	0.250	0.333	0.500	0.750	1.000
FRACTIONAL HORSEPOWER																	
1/100	1/70	1/60	1/50	1/40	1/30	1/25	1/20	1/15	1/12	1/10	1/8	1/6	1/4	1/3	1/2	3/4	1



Universal HVAC/R
Parts and Supplies

UNIVERSAL REPLACEMENT PROPELLERS

HUB AND HUBLESS TYPE PROPELLERS



HUB TYPE



HUBLESS TYPE



HUBLESS TYPE

- Hub and Hubless Types
- 3-, 5-, and 6-Blade Designs
- 5 1/2" - 10" Diameters
- 1/4" and 5/16" Bores
- CW and CCW Rotations
- High Quality Aluminum Blades

TYPICAL APPLICATIONS

- Air Moving – heating or cooling
- Fan Coils
- Freezers
- Refrigerators
- Refrigerated Display
- Cases
- Heaters
- Ventilators
- Range Hoods
- Small Appliances

WITH ALUMINUM FIXED HUB

PART	BLADES	DIA.	BORE	PITCH	ROTATION	DEPTH	RPM	MAX. PACK	STD. WT.
60834601 60834701	6	5 1/2"	1/4"	45°	CW CCW	1 1/2"	3450	4	1.0
60834801 60834901	5	7"	1/4"	27°	CW CCW	1 1/2"	3600	4	1.0
60835001 60835101	5	7"	5/16"	27°	CW CCW	1 1/2"	3600	4	1.0
60835201 60835301	5	8"	1/4"	24°	CW CCW	1 1/6"	3600	4	1.2
60835401 60835501	5	8"	1/4"	30°	CW CCW	1 5/8"	3600	4	1.2
60835601 60835701	5	8"	5/16"	18°	CW CCW	1 1/16"	3600	4	1.2
60835801 60835901	5	8"	5/16"	23°	CW CCW	1 5/16"	3600	4	1.2
60836201 60836301	5	9"	5/16"	26°	CW CCW	1 1/4"	3000	4	1.4
60836601 60836701	5	10"	1/4"	31°	CW CCW	1 5/8"	2400	4	2.0
60836801 60836901	5	10"	5/16"	20°	CW CCW	1 1/8"	2400	4	2.0
60837001 60837101	5	10"	5/16"	31°	CW CCW	1 5/8"	2400	4	2.0

CW Rotation: Hub on Intake Side. CCW Rotation: Hub on Discharge Side.

HUBLESS TYPE PROPELLERS

PART	BLADES	DIA.	PITCH	ROTATION	DEPTH	RPM	PACK
60838201	3	7 3/4"	30°	CW	2 9/16"	1550	4
60839701	3	8 3/4"	23°	CW	2 1/4"	1550	4
60838301	3	8 3/4"	32°	CW	3"	1550	4
60838401	3	10"	24°	CW	2 5/8"	1550	4
60837201	5	7"	20°	CW	1"	3600	4
60837301	5	7"	31°	CW	1 1/2"	3600	4
60837401	5	7 3/4"	20°	CW	1 1/8"	3600	4
60837501	5	7 3/4"	31°	CW	1 11/16"	3600	4
60837601	5	8"	24°	CW	1"	3600	4
60837701	5	8"	31°	CW	1 5/8"	3600	4
60837801	5	9"	20°	CW	1"	3000	4
60837901	5	9"	31°	CW	1 5/8"	3000	4
60838001	5	10"	20°	CW	1"	2400	4
60838101	5	10"	31°	CW	1 5/8"	2400	4

CW Rotation: Hub on Intake Side.

Used on equipment manufactured by well known OEMs such as Copeland, Tecumseh, Larkin Coils, Witt, Whirlpool, G.E., Carrier, Heil-Quaker, Nutone, Borg-Warner, Tappan, Amana, BDP, Barber-Colman, Emerson, Scotsman, Vendo and Beverage Air.

Specifications are subject to change without notice or obligation.

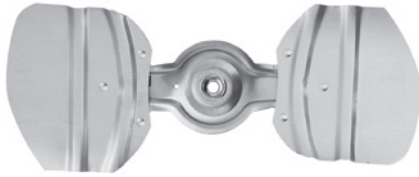
INTERCHANGEABLE HUBS FOR HUBLESS PROPELLERS



LAU PART	BORE
05382501	1/4"
05382502	5/16"

UNIVERSAL REPLACEMENT PROPELLERS

FIXED HUB PROPELLERS



- 14" - 24" diameters
- High strength aluminum blades
- Each propeller clearly labeled as to pitch, diameter, rotation and maximum RPM
- Available for immediate delivery from stock
- Top quality, epoxy painted spiders with high salt spray characteristics
- Steel Fixed Hub - 1/2" bore – exact propellers supplied to OEMs (no need for interchangeable hub feature since all Lau OEMs use 1/2" bore only)

TYPICAL APPLICATIONS

- For lower static pressure condensing units
- Well-known OEMs such as, G.E., Rheem-Rudd, Singer-Climate Control, Trane, etc.

2-BLADE WITH 1/2" BORE

PART	ROT. HUB LOC.*	DIA. (")	PITCH	RPM	STATIC PRESSURE										PACK
					.0" WC		.1" WC		.2" WC		.3" WC		.4" WC		
					CFM	HP	CFM	HP	CFM	HP	CFM	HP	CFM	HP	
60743401	CW,D	14"	36°	825	1067	.27	689	.035	-	-	-	-	-	-	2
				1075	1391	.061	1145	.068	742	.083	-	-	-	-	
				1140	1475	.072	1248	.080	913	.094	399	.120	-	-	
				1550	2005	.0182	1850	.191	1667	.202	1442	.219	1134	.244	
				1625	2102	.210	1956	.219	1785	.230	1582	.247	1321	.269	
60772501	CCW,I	18"	28°	830	2003	.061	1569	.070	668	.082	-	-	-	2	
				1075	2572	.122	2219	.131	1799	.146	984	.160	606		.197
				1140	2768	.144	2394	.155	2093	.174	1189	.177	814		.215
60652101	CCW,I	18"	33°	830	2217	.078	1758	.090	748	.103	-	-	-	2	
				1075	2841	.154	2491	.165	2124	.189	1080	.201	707		.245
				1140	3015	.187	2667	.199	2380	.223	1310	.219	884		.268
60772601	CCW,I	20"	28°	830	2375	.085	1775	.095	1025	.100	400	.120	-	2	
				1000	2861	.148	2410	.161	1777	.168	1175	.184	-		
				1140	2774	.155	2376	.181	2019	.197	1607	.207	-		
60772701	CCW,I	22"	16°	830	2325	.060	1425	.070	450	.100	-	-	-	2	
				1000	2800	.105	2024	.110	1289	.138	452	.210	-		
				1140	3193	.155	2541	.158	1889	.181	1188	.218	-		
60814201	CCW,I	22"	27°	830	3250	.095	2650	.113	1815	.130	1250	.148	-	2	
				1000	3910	.160	3400	.188	2890	.210	2100	.226	-		
				1140	4450	.240	4020	.270	3570	.298	3060	.320	-		
60772801	CCW,I	24"	27°	830	4136	.151	3504	.175	2358	.186	899	.240	-	2	
				1075	5299	.300	4753	.318	4346	.360	3785	.393	1845		.416
				1140	5647	.367	5015	.370	4645	.418	4202	.460	2254		.456

CW,D – Clockwise Rotation, hub on Discharge side of propeller. CCW, I – Counter-Clockwise Rotation, hub on Intake side of propeller.

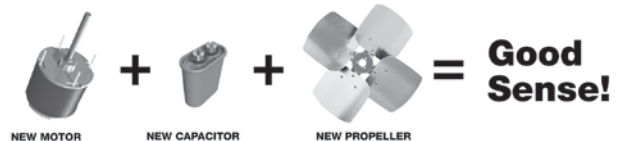
Safety Tips:

Avoid personal injury and/or equipment damage.

Do not exceed recommended RPM shown in charts.

Lau propellers are 100% inspected and precision balanced. Identification labels are applied to blades BEFORE balancing. Removal of a Lau label and/or adding additional labels to propeller blades can affect balance.

Why Risk a Callback?



When replacing a PSC motor, always replace the capacitor and *insist* on a Lau Universal Replacement Propeller to assure years of service from the motor you install today!

TOTALINE®

Universal HVAC/R
Parts and Supplies

UNIVERSAL REPLACEMENT PROPELLERS

HEAVY DUTY CONDENSER TYPE PROPELLERS



- 3-blade configuration is normally used in low pressure applications
- 4 and 5-blade configurations are suited for higher static pressures
- Square pressure-type blades are required for most condenser applications
- High quality aluminum blades
- Interchangeable hubs available from 1/4" through 3/4" bore, may be attached on either intake or discharge side (purchase separately)
- Pitches available for most common horsepower and motor speeds up to 1725 RPM in both CW and CCW rotations
- Each propeller clearly labeled as to pitch, diameter, rotation and maximum RPM
- Available for immediate delivery from stock

TYPICAL APPLICATIONS

- Air Conditioning Condensers
- Power Roof Ventilators
- Heat Pumps
- Heat Exchangers
- Roof Top Air Conditioners
- Commercial and Industrial Equipment
- Unit Heaters
- Agricultural Ventilation Equipment
- Walk-in Refrigeration Units
- General Cooling/Heating Applications

3-BLADE PROPELLERS

PART	ROT. HUB LOC.*	DIA. (")	PITCH	RPM	STATIC PRESSURE										PACK
					.0" WC		.1" WC		.2" WC		.3" WC		.4" WC		
					CFM	HP	CFM	HP	CFM	HP	CFM	HP	CFM	HP	
60265201 60265301	CW	10"	27°	1075	443	.013	213	.018	96	.019					2
				1140	471	.016	255	.020	115	.027					
	CCW	10"	27°	1550	632	.027	508	.034	335	.040	229	.048			
				1725	702	.036	593	.044	424	.050	312	.059	210	.065	
60716101 60716201	CW	12"	19°	1075	559	.015	309	.021	169	.026				2	
				1140	587	.017	378	.023	204	.028					
	CCW	12"	19°	1550	800	.032	674	.040	490	.047	353	.055	210		.061
				1725	886	.042	769	.050	630	.058	455	.068	369		.076
60716301 60716401	CW	12"	23°	1075	720	.019	543	.027	263	.033				2	
				1140	769	.022	608	.029	327	.037	162	.041			
	CCW	12"	23°	1550	1037	.045	936	.053	792	.064	543	.075	407		.084
				1725	1147	.060	1064	.072	947	.082	725	.082	555		.105
60716501 60716601	CW	14"	23°	1075	1060	.031	806	.041	499	.053				2	
				1140	1120	.035	893	.047	602	.058	397	.074			
	CCW	14"	23°	1550	1512	.071	1395	.086	1172	.102	927	.116	757		.134
				1725	1660	.099	1566	.115	1403	.132	1141	.148	947		.167
60716701 60716801	CW	14"	27°	1075	1211	.037	951	.047	610	.060	338	.077		2	
				1140	1275	.046	1065	.057	723	.069	485	.087			
	CCW	14"	27°	1550	1717	.103	1586	.117	1388	.133	1116	.149	895		.169
				1725	1908	.134	1798	.150	1646	.166	1426	.180	1185		.199
60716901 60717001	CW	16"	19°	1075	1415	.046	1218	.057	774	.071	518	.085		2	
				1140	1500	.053	1322	.063	962	.079	641	.093	413		.107
	CCW	16"	19°	1550	2014	.111	1890	.125	1751	.142	1555	.161	1187		.181
				1725	2212	.140	2105	.155	1988	.174	1844	.195	1620		.219
60717101 60717201	CW	16"	23°	1075	1613	.054	1432	.068	1080	.083	689	.101	349	.112	2
				1140	1725	.062	1556	.076	1234	.091	806	.110	562	.128	
	CCW	16"	23°	1550	2299	.140	2181	.158	2044	.178	1860	.200	1556	.222	
				1725	2538	.184	2438	.204	2320	.225	2170	.247	1960	.271	
60556101 60556201	CW	18"	27°	830	2138	.068	1741	.083	970	.097	597	.122		2	
				1075	2736	.131	2489	.142	2182	.169	1464	.187	1057		.211
	CCW	18"	27°	1140	2910	.155	2664	.164	2399	.192	1900	.220	1269		.237
				1625	3957	.390	3776	.392	3595	.417	3409	.454	3189		.495
60556301 60556401	CW	18"	30°	825	2236	.080	1820	.093	1028	.110	640	.138		2	
				1075	2908	.164	2596	.166	2256	.199	1582	.220	1136		.244
	CCW	18"	30°	1140	3066	.189	2804	.195	2524	.226	2022	.257	1351		.274
				1625	4370	.548	4192	.540	4003	.564	3817	.605	3612		.652
1725	4639	.656	4475	.644	4293	.666	4119	.706	3936	.754					

NOTE: Order Hubs separately see page 26

Specifications are subject to change without notice or obligation.

UNIVERSAL REPLACEMENT PROPELLERS

HEAVY DUTY CONDENSER TYPE PROPELLERS

3-BLADE PROPELLERS - CONTINUED

PART	ROT. HUB LOC.*	DIA. (")	PITCH	RPM	STATIC PRESSURE										PACK
					.0" WC		.1" WC		.2" WC		.3" WC		.4" WC		
					CFM	HP	CFM	HP	CFM	HP	CFM	HP	CFM	HP	
60556501 60556601	CW CCW	18" 18"	33° 33°	825 1075 1140 1625 1725	2453 3127 3321 4588 4870	.095 .197 .229 .570 .682	2032 2857 3063 4448 4740	.105 .193 .229 .583 .695	1209 2534 2765 4292 4595	.122 .223 .259 .605 .717	746 1802 2174 4109 4432	.149 .249 .292 .637 .784	1252 1483 3882 4237	.271 .306 .676 .786	2
60556701	CW CCW	20" 20"	27° 27°	850 1000 1140	2500 2970 3360	.072 .115 .170	2100 2600 3070	.085 .135 .200	1460 2170 2700	.105 .155 .230	950 1600 2280	.122 .175 .250			2
60556901 60557001	CW CCW	20" 20"	30° 30°	850 1000 1140	2750 3250 3700	.100 .140 .220	2400 3000 3480	.110 .157 .240	1740 2400 3150	.125 .190 .253	1150 1850 2660	.150 .210 .300			2
60557101 60557201	CW CCW	20" 20"	33° 33°	850 1000 1140	2950 3500 4000	.110 .175 .250	2570 3170 3700	.120 .190 .270	1850 2550 3400	.140 .217 .300	1300 2000 2860	.170 .240 .350			2
60557301 60557401	CW CCW	22" 22"	27° 27°	850 1000 1140	3930 4700 5330	.200 .340 .500	3650 4400 5100	.220 .360 .530	3200 4050 4800	.240 .380 .570	2500 3600 4500	.275 .400 .620			2
60557501 60557601	CW CCW	22" 22"	33° 33°	850 1000 1140	4600 5450 6200	.300 .490 .720	4250 5150 5950	.330 .510 .753	3800 4800 5600	.360 .522 .810	3100 4380 5300	.380 .553 .850			2
60557701 60557801	CW CCW	24" 24"	27° 27°	825 1075 1140 1625	4844 6277 6632 9151	.237 .492 .583 1.533	4302 5834 6170 8669	.241 .492 .584 1.481	3855 5518 5872 8427	.286 .537 .633 1.536	1819 5195 5588 8229	.315 .590 .688 1.605	1247 4769 5267 8049	.384 .643 .742 1.679	2
60557901 60558001	CW CCW	24" 24"	33° 33°	825 1075 1140 1625	5335 6956 7538 10072	.300 .640 .747 1.857	4708 6432 6889 9698	.307 .635 .725 1.885	4244 6092 6550 9421	.364 .688 .780 1.949	1931 5758 6233 9194	.395 .747 .848 2.017	1444 5346 5877 8985	.472 .803 .919 2.087	2

NOTE: Order Hubs separately see page 26



Universal HVAC/R
Parts and Supplies

UNIVERSAL REPLACEMENT PROPELLERS

HEAVY DUTY CONDENSER TYPE PROPELLERS



10"



12" - 14"



16" - 20"



22" - 24"



26"

4-BLADE PROPELLERS

PAR	ROT. HUB LOC.*	DIA. (")	PITCH	RPM	STATIC PRESSURE										PACK			
					.0" WC		.1" WC		.2" WC		.3" WC		.4" WC					
					CFM	HP	CFM	HP	CFM	HP	CFM	HP	CFM	HP				
60717301 60717401	CW CCW	10"	19°	825	432	.012	309	.017	-	-	-	-	-	-	-	2		
				1075	563	.027	477	.033	361	.038	-	-	-	-	-			
				1140	597	.033	516	.039	416	.044	-	-	-	-	-			
				1550	812	.082	754	.091	692	.099	623	.107	536	.113	-			
				1625	857	.095	796	.104	738	.113	624	.121	598	.128	-			
60717501 60717501	CW CCW	10"	23°	1075	402	.012	220	.017	132	.023	-	-	-	-	2			
				1140	429	.016	271	.021	154	.026	-	-	-	-				
				1550	580	.025	479	.032	333	.038	252	.046	193	.054				
				1725	646	.033	557	.041	422	.047	330	.056	277	.064				
				60717701 60717801	CW CCW	10"	27°	1140	580	.011	366	.023	209	.018		-	-	-
1550	788	.027	600	.029				440	.033	350	.040	-						
1725	877	.037	723	.039				587	.042	462	.049	-						
60759901 60760001	CW CCW	10"	33°	1075				535	.019	334	.027	231	.035	-	-	-	2	
1140				564				.022	365	.027	231	.035	-	-	-			
1550				771	.045	635	.050	497	.058	398	.069	-						
1725				856	.057	771	.064	607	.069	519	.080	437	.092					
60717901 60718001				CW CCW	12"	19°	1075	586	.019	410	.025	273	.031	168	.035	-		2
	1140	623	.020				471	.027	318	.033	228	.039	-					
	1550	839	.042				746	.051	613	.060	495	.069	415	.077				
	1725	929	.054				841	.064	725	.074	612	.085	537	.094				
	60718101 60718201	CW CCW	12"				23°	1075	731	.022	569	.029	345	.037	28	.044	-	
1140				773	.024	640		.033	414	.042	290	.049	-					
1550				1045	.048	969		.061	824	.074	644	.086	534	.095				
1725				1162	.065	1095		.068	994	.089	831	.105	690	.117				
60718301 60718401				CW CCW	12"	27°		1075	822	.023	683	.032	422	.040	272	.048	-	2
	1140	872	.030				725	.039	489	.048	341	.057	-					
	1550	1171	.060				1100	.071	983	.084	762	.100	610	.122				
	1725	1302	.081				1233	.092	1136	.107	973	.124	794	.139				
	60760101 60760201	CW CCW	12"				33°	1075	953	.032	808	.041	488	.052	326	.062	-	
1140				1015	.040	902		.047	565	.060	408	.071	-					
1550				1369	.087	1292		.096	1161	.110	919	.129	745	.144				
1725				1508	.119	1447		.127	1356	.140	1172	.163	943	.184				
60718501 60718601				CW CCW	14"	19°		1075	970	.023	772	.035	492	.045	344	.055	-	2
	1140	1030	.029				853	.040	576	.050	413	.063	264	.073				
	1550	1380	.066				1281	.080	1134	.095	899	.108	731	.123				
	1725	1523	.088				1445	.104	1332	.119	1134	.133	926	.149				
	60718701 60718801	CW CCW	14"				23°	1075	1143	.035	982	.047	628	.059	448	.072	252	
1140				1216	.043	1075		.054	741	.069	535	.081	386	.093				
1550				1643	.089	1564		.103	1452	.119	1248	.136	972	.154				
1725				1810	.123	1740		.139	1644	.155	1488	.171	1211	.190				
60718901 60719001				CW CCW	14"	27°		1075	1286	.046	1131	.055	737	.071	525	.087	-	2
	1140	1370	.054				1225	.064	843	.081	624	.096	440	.113				
	1550	1838	.125				1754	.138	1629	.153	1376	.173	1090	.198				
	1725	2036	.167				1963	.180	1863	.197	1702	.218	1418	.244				

Specifications are subject to change without notice or obligation.

UNIVERSAL REPLACEMENT PROPELLERS

HEAVY DUTY CONDENSER TYPE PROPELLERS

4-BLADE PROPELLERS - CONTINUED

PART	ROT. HUB LOC.*	DIA. (")	PITCH	RPM	STATIC PRESSURE										PACK
					.0" WC		.1" WC		.2" WC		.3" WC		.4" WC		
					CFM	HP	CFM	HP	CFM	HP	CFM	HP	CFM	HP	
60760301	CW	14"	33°	1075	1448	.061	1241	.069	858	.089	596	.105			2
60760401	CCW	14"	33°	1140	1531	.076	1341	.085	940	.108	709	.125	517	.143	
				1550	2077	.179	1972	.185	1811	.200	1521	.228	1240	.255	
				1725	2298	.234	2208	.245	2086	.260	1891	.282	1598	.312	
60719101	CW	16"	19°	1075	1405	.045	1231	.059	919	.075	646	.089	490	.102	2
60719201	CCW	16"	19°	1140	1482	.049	1332	.065	1098	.079	766	.093	562	.109	
				1550	1960	.113	1864	.131	1740	.151	1564	.171	1324	.192	
				1725	2161	.142	2077	.166	1975	.189	1841	.213	1657	.235	
60719301	CW	16"	19°	1075	1671	.064	1527	.078	1251	.096	845	.113	637	.133	2
60719201	CCW	16"	19°	1140	1774	.072	1638	.087	1410	.107	1018	.126	784	.144	
				1550	2365	.169	2268	.189	2156	.210	2016	.233	1815	.258	
				1725	2602	.218	2518	.239	2422	.263	2307	.290	2158	.321	
60719501	CW	16"	27°	1075	1896	.087	1747	.099	1498	.120	1018	.140	754	.158	2
60719601	CCW	16"	27°	1140	1997	.100	1872	.115	1653	.133	1237	.154	934	.175	
				1550	2677	.229	2593	.244	2488	.263	2348	.288	2123	.319	
				1725	2959	.314	2879	.327	2789	.346	2682	.369	2547	.397	
60760501	CW	16"	33°	1075	2013	.110	1852	.119	1469	.139	1123	.164	873	.188	2
60760601	CCW	16"	33°	1140	2134	.123	1963	.131	1611	.154	1277	.183	1038	.209	
				1550	2882	.299	2782	.308	2655	.327	2501	.355	2296	.390	
				1725	3201	.397	3107	.405	2988	.422	2851	.449	2684	.483	
60800201	CW	18"	23°	825	1918	.053	1678	.068	1027	.085	663	.103			2
60800301	CCW	18"	23°	1075	2491	.105	2291	.121	2060	.147	1595	.173	1117	.190	
				1140	2614	.126	2450	.142	2252	.168	1900	.199	1325	.217	
				1625	3624	.319	3508	.335	3388	.361	3259	.393	3111	.431	
				1725	3847	.382	3738	.398	3626	.424	3508	.456	3377	.494	
60558101	CW	18"	27°	825	2115	.068	1855	.082	1205	.102	765	.124			2
60558201	CCW	18"	27°	1075	2690	.136	2502	.157	2240	.188	1657	.216	1212	.236	
				1140	2873	.167	2702	.179	2495	.205	2174	.239	1465	.263	
				1625	3960	.408	3855	.426	3740	.451	3609	.484	3454	.523	
				1725	4204	.488	4105	.507	3998	.532	3880	.565	3745	.603	
60558301	CW	18"	30°	825	2241	.078	1942	.093	1244	.114	799	.138			2
60558401	CCW	18"	30°	1075	2886	.172	2699	.179	2461	.204	1954	.238	1289	.259	
				1140	3045	.194	2869	.206	2654	.234	2295	.270	1521	.290	
				1625	4231	.487	4122	.503	4003	.529	3873	.563	3727	.603	
				1725	4491	.583	4389	.599	4278	.625	4160	.659	4029	.699	
60558501	CW	18"	33°	825	2433	.100	2055	.113	1391	.135	862	.157			2
60558601	CCW	18"	33°	1075	3130	.208	2934	.214	2648	.240	2047	.274	1513	.297	
				1140	3309	.247	3089	.242	2828	.272	2458	.316	1750	.340	
				1625	4623	.638	4501	.634	4350	.650	4188	.683	4001	.730	
				1725	4907	.763	4796	.758	4655	.771	4506	.802	4341	.846	
60800401	CW	20"	23°	850	2235	.056	1830	.075	1400	.090	1060	.105			2
60800501	CCW	20"	23°	1000	2630	.091	2280	.117	1930	.135	1560	.160			
				1140	3000	.135	2700	.160	2400	.190	2100	.207			
60558701	CW	20"	27°	850	2590	.090	2180	.103	1700	.130	1300	.142			2
60558801	CCW	20"	27°	1000	3000	.150	2680	.162	2300	.180	1900	.200			
				1140	3420	.196	3120	.230	2800	.255	2450	.280			
60558901	CW	20"	30°	850	2800	.110	2490	.128	1900	.145	1500	.170			2
60559001	CCW	20"	30°	1000	3300	.180	3020	.200	2650	.220	2150	.240			
				1140	3770	.260	3510	.290	3215	.310	2830	.335			
60559101	CW	20"	33°	850	3120	.130	2700	.150	2040	.165	1610	.195			2
60559201	CCW	20"	33°	1000	3660	.210	3330	.235	2850	.260	2300	.282			
				1140	4160	.315	3900	.340	3520	.360	3020	.390			

NOTE: Order Hubs separately see page 26



Universal HVAC/R
Parts and Supplies

UNIVERSAL REPLACEMENT PROPELLERS

HEAVY DUTY CONDENSER TYPE PROPELLERS

4-BLADE PROPELLERS - CONTINUED

PART	ROT. HUB LOC.*	DIA. (")	PITCH	RPM	STATIC PRESSURE										PACK
					.0" WC		.1" WC		.2" WC		.3" WC		.4" WC		
					CFM	HP	CFM	HP	CFM	HP	CFM	HP	CFM	HP	
60804101 60804201	CW CCW	22" 22"	23° 23°	850 1000 1140	3300 3870 4410	.150 .245 .360	3070 3700 4270	.175 .275 .395	2760 3450 4090	.200 .305 .430	2340 3150 3850	.220 .330 .460			2
60559301 60559401	CW CCW	22" 22"	27° 27°	850 1000 1140	3900 4580 5220	.208 .330 .500	3650 4400 5050	.230 .365 .520	3280 4100 4840	.255 .395 .565	2800 3780 4580	.280 .427 .600			2
60559501 60559601	CW CCW	22" 22"	33° 33°	850 1000 1140	4460 5250 6000	.300 .480 .710	4200 5050 5800	.322 .520 .760	3830 4780 5600	.350 .552 .800	3100 4400 5320	.375 .580 .830			2
60804301 60804401	CW CCW	24" 24"	23° 23°	825 1075 1140 1625	4188 5457 5728 7742	.187 .413 .484 1.266	3829 5112 5466 7504	.213 .408 .506 1.252	3415 4857 5217 7296	.258 .453 .550 1.290	2262 4611 4962 7124	.292 .508 .601 1.345	1550 4322 4662 6964	.334 .567 .655 1.408	2
60559701 60559801	CW CCW	24" 24"	27° 27°	825 1075 1140 1625	4958 6329 6735 9042	.262 .535 .627 1.548	4570 6081 6450 8848	.281 .565 .673 1.642	4103 5829 6194 8670	.328 .607 .723 1.705	2761 5546 5930 8496	.365 .657 .774 1.769	1904 5183 5629 8323	.414 .711 .825 1.835	2
60559901 60560001	CW CCW	24" 24"	33° 33°	825 1075 1140 1625	5879 7519 7943 10763	.376 .806 .935 2.312	5526 7293 7669 10586	.402 .827 .965 2.359	5041 7029 7391 10412	.444 .864 1.103 2.416	3560 6700 7089 10237	.484 .919 1.071 2.481	2322 6235 6733 10059	.522 .988 1.137 2.553	2
60760701 60760801	CW CCW	26" 26"	24° 24°	850 1000 1140	5440 6400 7300	.333 .540 .810	5200 6200 7120	.375 .590 .860	4900 6000 6930	.412 .630 .910	4500 5700 6720	.448 .680 .960			1

PROPELLER ACCESSORIES

INTERCHANGEABLE HUBS

For use on all 3-Blade, 4-Blade and 5-Blade propellers

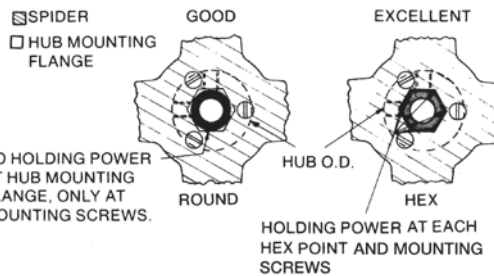


HEX/Round Hubs

(includes set and mounting screws)

PART	BORE	SETSCREWS
60765801	1/4"	1
60765802	5/16"	1
60765803	3/8"	1
60765804	1/2"	2
60765805	5/8"*	2
60765806	3/4"*	2

*with keyway



- All steel with extra metal in the two mounting surfaces (hex and round) for more secure fit in multiple applications
- Hex on one side, round on the other (may use either side) - one inventory for all propellers
- Zinc-plated, coated with gold chromate for double protection
- Setscrews are heat-treated, black oxide
- Mounting screws: zinc-plated, heat-treated, pan-slotted - with locking serrations under the head - with nylock patch for added locking strength (double locking device designed to grip into the threads without backing out)
- 5/8" and 3/4" have keyway with extended body length for increased strength
- Can be ordered in boxes of 12 or individually

SETSCREWS



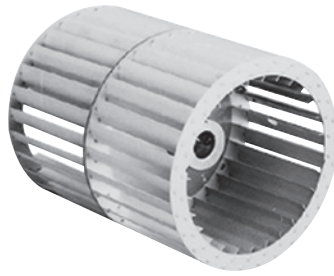
Allen Head Setscrews

PART	RECOMMENDED DESCRIPTION	SEATING TORQUE	PKG.
05055001	1/4-28 x 1/2"	70 In-lbs.	12
05055002	5/16-24 x 5/8"	130 In-lbs.	12

TECHNICAL TIP:

Lau HEX design takes the torque off the screws and puts it on the hub and spider - where it belongs!

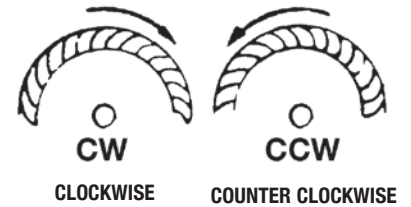
DOUBLE INLET BLOWER WHEELS



ALUMINUM WITH STEEL HUBS (4 3/4" - 7 1/2" DIAMETER)

PART	DIA.	WIDTH	ROTATION	BORE	RPM
02895808	4 3/4"	5 1/8"	CW	1/2"	3450
02895814	4 3/4"	5 1/8"	CCW	1/2"	3450
02895801	4 3/4"	6 7/8"	CW	1/2"	3450
02895815	4 3/4"	6 7/8"	CCW	1/2"	3450
02895802	5 1/4"	5 7/8"	CW	1/2"	3450
02895816	5 1/4"	5 7/8"	CCW	1/2"	3450
02895817	5 1/4"	6 3/4"	CCW	1/2"	3450
02895818	5 1/4"	6 3/4"	CW	1/2"	3450
02895803	5 1/4"	6 7/8"	CW	1/2"	3450
02895819	5 1/4"	6 7/8"	CCW	1/2"	3450
02895804	5 3/4"	5 7/8"	CW	1/2"	3450
02895820	5 3/4"	5 7/8"	CCW	1/2"	3450
02895805	5 3/4"	6 7/8"	CW	1/2"	3450
02895821	5 3/4"	6 7/8"	CCW	1/2"	3450
02895822	5 3/4"	7 5/8"	CW	1/2"	3450
02895823	5 3/4"	7 5/8"	CCW	1/2"	3450
02895824	5 3/4"	8"	CW	1/2"	3450
02895825	5 3/4"	8"	CCW	1/2"	3450
02895806	5 3/4"	8 1/2"	CW	1/2"	3450
02895826	5 3/4"	8 1/2"	CCW	1/2"	3450
02895827	6 5/16"	6 3/8"	CW	3/4"	3450
02895828	6 5/16"	6 3/8"	CCW	3/4"	3450
02895807	6 5/16"	7 5/8"	CW	1/2"	3450
02895829	6 5/16"	7 5/8"	CCW	1/2"	3450
02895832	7 1/2"	4"	CW	3/4"	2500
02895833	7 1/2"	4"	CCW	3/4"	2500
02895834	7 1/2"	5"	CW	3/4"	2500
02895835	7 1/2"	5"	CCW	3/4"	2500
02895836	7 1/2"	6 11/32"	CW	3/4"	1800
02895837	7 1/2"	6 11/32"	CCW	3/4"	1800

Specifications are subject to change without notice or obligation.



NOTE: To determine rotation for double wheels, view from hub.

TECHNICAL TIPS:

- For other sizes: Double inlet wheels may be duplicated in the field by:
1. Using one CW and one CCW single wheel – may be different widths to make up space required, but diameters must be the same.
 2. For wheels too close to apparatus to reach with driver, tighten wheels to shaft by using extended "T" Allen wrench inserted through a notch in one of the blades in each wheel.

CAUTION:

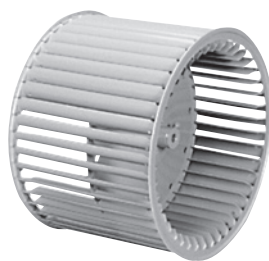
To avoid potential vibration, allow slight air gap (min. 1/32") between wheels.



Universal HVAC/R
Parts and Supplies

BLOWER WHEELS

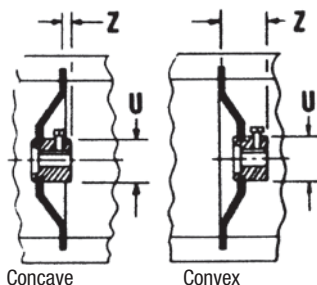
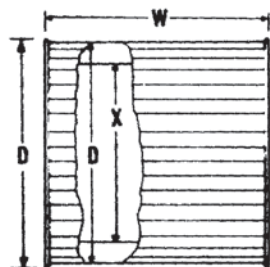
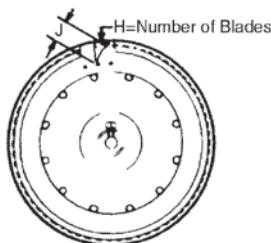
DOUBLE INLET BLOWER WHEELS



- 9" - 11" Double Inlet features a new design ensuring more precise blade spacing and improved consistency in alignment and balance
- Dynamically balanced, forward curved
- Incorporates Preslok® center disc construction for positive blade retention
- Provides higher RPM capability and industry proven reliability
- Offering the same outstanding features and high quality as Lau "A Series" Preslok® Wheels, "DD" Preslok® Wheels have a special hub for use with direct drive blowers
- All Standard Replacement Wheels are galvanized, cold-rolled steel
- Standard center disc arrangements shown

Rotation determined by viewing from hub side.

J = 1" on all models thru 11"
J = 11 5/16" on 12" models



DIRECT DRIVE WHEELS (9" - 11" DIAMETER)

LAU UNIVERSAL REPLACEMENT "DD" PRESLOK® WHEELS FOR DIRECT DRIVE BLOWERS

PART	BORE SIZE	ROT.	CENTER DISC.	MAX RPM	D	W	X	U	Z	H
01333401	1/2"	CW	Convex	1750	9 1/2	4 1/2	7 11/16	1 1/4	1 25/32	43
01333501	1/2"	CW	Convex	1750	9 1/2	6	7 11/16	1 1/4	1 25/32	43
01333602	1/2"	CW	Convex	1750	9 1/2	7 1/8	7 11/16	1 1/4	1 25/32	43
01333603	1/2"	CCW	Convex	1750	9 1/2	7 1/8	7 11/16	1 1/4	1 25/32	43
01333701	1/2"	CW	Convex	1750	9 1/2	8	7 11/16	1 1/4	1 25/32	43
01333703	1/2"	CCW	Convex	1750	9 1/2	8	7 11/16	1 1/4	1 25/32	43
01333201	1/2"	CW	Concave	1750	9 1/2	9 1/2	7 11/16	1 1/4	7/32	43
01333203	1/2"	CCW	Concave	1750	9 1/2	9 1/2	7 11/16	1 1/4	7/32	43
01332701	1/2"	CW	Convex	1750	11 1/8	4 1/2	8 7/8	1 1/4	1 15/16	48
01332601	1/2"	CW	Convex	1750	11 1/8	6	8 7/8	1 1/4	1 15/16	48
01332602	1/2"	CCW	Convex	1750	11 1/8	6	8 7/8	1 1/4	1 15/16	48
01332614	5/8"	CW	Convex	1750	11 1/8	6	8 7/8	1 1/4	1 15/16	48
01332501	1/2"	CW	Convex	1750	11 1/8	7 1/8	8 7/8	1 1/4	1 15/16	48
02710204	1/2"	CCW	Convex	1750	11 1/8	7 1/8	8 7/8	1 1/4	1 15/16	48
01332401	1/2"	CW	Convex	1750	11 1/8	8	8 7/8	1 1/4	1 15/16	48
01332402	1/2"	CCW	Convex	1750	11 1/8	8	8 7/8	1 1/4	1 15/16	48
01331701	1/2"	CW	Concave	1750	11 1/8	9 1/2	8 7/8	1 1/4	1/16	48
01331704	1/2"	CCW	Concave	1750	11 1/2	9 1/2	8 7/8	1 1/4	1/16	48
01332301	1/2"	CW	Convex	1750	11 1/8	9 1/2	8 7/8	1 1/4	1/16	48
01331602	1/2"	CW	Concave	1750	11 1/8	10 5/8	8 7/8	1 1/4	1/16	48
01332203	1/2"	CW	Convex	1750	11 1/8	10 5/8	8 7/8	1 1/4	1/16	48
01331606	1/2"	CCW	Concave	1750	11 1/8	10 5/8	8 7/8	1 1/4	1/16	48
02694003	1/2"	CW	Convex	1550	12 1/4	6	10	1 1/4		53
02694005	1/2"	CW	Convex	1550	12 1/4	7 1/8	10	1 1/4		53
02694007	1/2"	CW	Convex	1550	12 1/4	8	10	1 1/4		53
02694107	1/2"	CW	Concave	1550	12 1/4	8	10	1 1/4		53
02694008	1/2"	CCW	Convex	1550	12 1/4	8	10	1 1/4		53
02694009	1/2"	CW	Convex	1550	12 1/4	9 1/2	10	1 1/4		53
02694010	1/2"	CCW	Convex	1550	12 1/4	9 1/2	10	1 1/4		53
02694111	1/2"	CW	Concave	1550	12 1/4	10 5/8	10	1 1/4		53
02694112	1/2"	CCW	Concave	1550	12 1/4	10 5/8	10	1 1/4		53
01369325	1/2"	CW	Convex	1200	13 3/16	9 1/2	10 5/16	1 1/4	2	43
01369315	5/8"	CW	Convex	1200	13 3/16	9 1/2	10 5/16	1 1/4	2	43
01556507	1/2"	CW	Concave	1200	13 3/16	12 5/8	10 5/16	1 1/4	1/16	43
01556504	5/8"	CW	Concave	1200	13 3/16	12 5/8	10 5/16	1 1/4	1/16	43

TEMPERATURE: Due to temperature limitations of most motors, these wheels are recommended for application temperatures not exceeding 135°F (60°C). Wheels are rated to 200°F.

Specifications are subject to change without notice or obligation.

SERVICE TIP:

If opposite rotation is required, mount motor on hub side. Setscrew must be converted to Allen-head screw and then tightened through the blades, using "T" Allen wrench. (You may have to notch blade above setscrew to provide access for "T" Allen wrench.)

BLOWER WHEELS

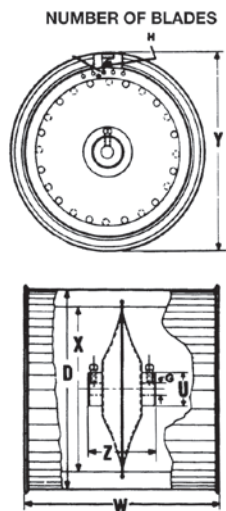
DOUBLE INLET BLOWER WHEELS



- Galvanized, Universal Replacement Preslok® wheels with two hubs for CW or CCW rotation
- Highest quality blower wheel available for heating and air conditioning use
- Each blade is mechanically attached to the center disc by four steel fingers pressed through the hole in the blade for positive locking action
- End rings are of deep section and center disc is airflow shaped with increased hub spread. Highest maximum speed in the Lau wheel line
- **Maximum Operating Temperature - 200°F**

BELT DRIVE - A SERIES (9" - 20" DIAMETERS)

PART	G (BORE)	SET SCREW	KEY WAY	Y	W	D	X	U	Z	H	MAX. WHEEL CAGE RPM
00866612	3/4"	1	.19 x .09	9 1/2	6	9 1/2	7 11/16	1 1/4	2.94	43	4000
00862112	3/4"	1	.19 x .09	9 1/2	7 1/8	9 1/2	7 11/16	1 1/4	2.94	43	3300
00851912	3/4"	1	.19 x .09	9 1/2	9 1/2	9 1/2	7 11/16	1 1/4	2.94	43	2400
00851916	1"	1	.25 x 12	9 1/2	9 1/2	9 1/2	7 11/16	1 3/4	2.875	43	2400
01223712	3/4"	1	.19 x .09	10 5/8	4 1/2	10 5/8	8 7/8	1 1/4	3.28	48	3900
00836412	3/4"	1	.19 x .09	10 5/8	6	10 5/8	8 7/8	1 1/4	3.28	48	3900
00836312	3/4"	1	.19 x .09	10 5/8	7 1/8	10 5/8	8 7/8	1 1/4	3.28	48	3100
00836112	3/4"	1	.19 x .09	10 5/8	8	10 5/8	8 7/8	1 1/4	3.28	48	3000
00836212	3/4"	1	.19 x .09	10 5/8	9 1/2	10 5/8	8 7/8	1 1/4	3.28	48	2300
00836012	3/4"	1	.19 x .09	10 5/8	10 5/8	10 5/8	8 7/8	1 1/4	3.28	48	2100
00836010	5/8"	1	.19 x .09	10 5/8	10 5/8	10 5/8	8 7/8	1 1/4	3.28	48	2100
00836016	1"	1	.25 x 12	10 5/8	10 5/8	10 5/8	8 7/8	1 3/4	3.25	48	2100
00897116	1"	1	.25 x 12	13 3/16	6	12 5/8	10 5/16	1 3/4	3.5	43	3800
02757515	3/4"	1	.19 x .09	13 3/16	9 1/2	12 5/8	10 5/8	1 3/4	3.25	48	2100
00850716	1"	1	.25 x 12	13 3/16	9 1/2	12 5/8	10 5/16	1 3/4	3.5	43	2500
00850758	1 3/16"	1	.25 x 12	13 3/16	9 1/2	12 5/8	10 5/16	1 3/4	3.5	43	2500
00850723	1 7/16"	2	.38 x .19	13 3/16	9 1/2	12 5/8	10 5/16	2 1/2	3.88	43	2500
00986716	1"	1	.25 x 12	13 3/16	11 1/8	12 5/8	10 5/16	1 3/4	3.5	43	2000
00840310	5/8"	1	.19 x .09	13 3/16	12 5/8	12 5/8	10 5/16	1 1/4	3.375	43	1800
00840301	3/4"	1	.19 x .09	13 3/16	12 5/8	12 5/8	10 5/16	1 1/4	3.375	43	1800
00840316	1"	1	.25 x 12	13 3/16	12 5/8	12 5/8	10 5/16	1 3/4	3.5	43	1800
00840393	1 3/16"	1	.25 x 12	13 3/16	12 5/8	12 5/8	10 5/16	2 1/2	3.88	43	1800
00840379	1 7/16"	2	.38 x .19	13 3/16	12 5/8	12 5/8	10 5/16	2 1/2	3.88	43	1800
00874716	1"	1	.25 x 12	13 3/16	15	12 5/8	10 5/16	1 3/4	3.5	43	1100
00954816	1"	1	.25 x 12	15 1/2	9 1/2	15	12 5/8	1 3/4	4.12	51	2500
00954870	1 3/16"	2	.25 x 12	15 1/2	9 1/2	15	12 5/8	2 1/2	4.5	51	2500
00954823	1 7/16"	2	.38 x .19	15 1/2	9 1/2	15	12 5/8	2 1/2	4.5	51	2500
00841816	1"	1	.25 x 12	15 1/2	11 1/8	15	12 5/8	1 3/4	4.125	51	2100
00841877	1 3/16"	1	.25 x 12	15 1/2	11 1/8	15	12 5/8	1 3/4	4.125	51	2100
00841880	1 7/16"	2	.38 x .19	15 1/2	11 1/8	15	12 5/8	2 1/2	4.5	51	2100
00874616	1"	1	.25 x 12	15 1/2	12 5/8	15	12 5/8	1 3/4	4.125	51	1900
00827616	1"	1	.25 x 12	15 1/2	15	15	12 5/8	1 3/4	4.125	51	1550
01767137	1 3/16"	1	.25 x 12	15 1/2	15	15	12 5/8	1 3/4	4.125	51	1550
00827672	1 7/16"	2	.38 x .19	15 1/2	15	15	12 5/8	2 1/2	4.5	51	1550
00865916	1"	1	.25 x 12	18 5/8	13 1/2	18 1/8	14 11/16	1 3/4	5	48	1500
00865960	1 7/16"	1	.25 x 12	18 5/8	13 1/2	18 1/8	14 11/16	1 3/4	5	48	1500
00865816	1"	1	.25 x 12	18 5/8	18	18 1/8	14 11/16	1 3/4	5	48	1200
00865874	1 3/16"	1	.25 x 12	18 5/8	18	18 1/8	14 11/16	1 3/4	5	48	1200
00865887	1 7/16"	2	.38 x .19	18 5/8	18	18 1/8	14 11/16	2 1/2	5.375	48	1200
(A) 02553211	1 7/16"	1	.38 x .19	20 1/2	13 1/2	20	16 9/16	2 1/2	5.38	53	1300
(A) 02553207	1 7/16"	1	.38 x .19	20 1/2	15	20	16 9/16	2 1/2	5.38	53	1200
(A) 01954002	1 3/16"	1	.25 x 12	20 1/2	18	20	16 9/16	2 1/2	5.38	53	1100
(A) 01954041	1 7/16"	2	.38 x .19	20 1/2	18	20	16 9/16	2 1/2	5.38	53	1100
(A) 01954029	1 11/16"	1	.38 x .19	20 1/2	18	20	16 9/16	2 3/4	5.38	53	1100
(A) 01954020	2 15/16"	1	.50 x .25	20 1/2	18	20	16 9/16	4 1/4	5.38	53	1100
(A) 02043907*	3"	-	N/A	20 1/2	18	20	16 9/16	5 3/4	5.38	53	1100
(A) 02043920*	4"	-	N/A	20 1/2	18	20	16 9/16	7 1/8	5.38	53	1100



REDUCING BUSHINGS

For These
Wheels Only



Used to reduce wheel bore sizes. A 1" bore wheel can be reduced to a 3/4" bore by using bushings with a 1" O.D. and a 3/4" I.D.

Model Description:

Bushing, 1" O.D. x 3/4" I.D. x 1 1/8" long

Part No.

027502-03

IMPORTANT:

Order the quantity of bushings to match number of hubs in the wheel.

SERVICE TIP: Use reducer bushings (one for each hub) if a smaller bore size is required.

TOTALINE

Universal HVAC/R
Parts and Supplies

(A) These wheels are a special order with 6-8 weeks lead time required and CANNOT ship by UPS.

* 1 3/16" and above diameter Clamplok hubs include tapped holes at 90° to keyway for accepting 2nd SS (supplied by installer).

BLOWER WHEELS

SINGLE INLET BLOWER WHEELS



- Galvanized steel construction (for plastic wheels, see Page 32)
- Replaces several OEM designs, as shown, and more
- Many can be bored to fit odd/larger sizes up to 5/8"
- Add bushings for smaller bore sizes (see Page 31)
- Allen head setscrews for easy reversibility
- Can combine two to replace double inlet wheels (see Technical Tips at the bottom, right of this page)
- **Maximum Operating Temperature - 200°F**

Lau's complete galvanized single inlet blower wheels are designed for easy serviceability and are built to last in the toughest of applications as well as to reduce SKUs.

TYPICAL APPLICATIONS

- Fan Coil Units
- Room Air Conditioners
- Draft Inducers
- Power Burners
- Heaters
- Packaged Terminal vAir Conditioners (PTAC) systems



COUNTER CLOCKWISE CLOCKWISE

ROTATION

Single inlet wheels from closed end (backplate)

TECHNICAL TIP:

Double inlet wheels may be duplicated in the field using **single** inlet wheels by:

1. Using one CW and one CCW single wheel back to back (may be different widths to make up space required, but diameters must be the same).
2. For wheels too close to apparatus to reach with a wrench, tighten wheels to shaft by using extended "T" Allen wrench inserted through a notch in one of the blades in each wheel.
3. **CAUTION:** To avoid potential vibration, allow slight air gap (min. 1/32") between wheels.

GALVANIZED - 3 3/16" - 10" DIAMETER

PART	MAX. RPM	DIA.	WIDTH	ROTATION	BORE	OEM APPLICATIONS
02895766	4500	3 13/16"	1 1/32"	CW	1/4"	Draft Inducers
02895767	4500	3 13/16"	1 1/32"	CCW	1/4"	Draft Inducers
02895768	4500	3 13/16"	1 7/8"	CW	5/16"	Draft Inducers, Evcon
02895769	4500	3 13/16"	1 7/8"	CCW	5/16"	Draft Inducers
02895770	4500	3 13/16"	2 1/2"	CW	5/16"	Draft Inducers, Reznor
02895771	4500	3 13/16"	2 1/2"	CCW	5/16"	Draft Inducers, Reznor
02895772	4500	3 27/32"	1 1/4"	CW	1/4"	Carrier, Draft Inducers
02895773	4500	3 27/32"	1 1/4"	CCW	1/4"	Carrier, Draft Inducers
02895774	4500	4"	1 1/2"	CCW	5/16"	Lennox, Carrier
02895775	4500	4"	2 1/2"	CCW	1/4"	Carrier, Amana, Draft Inducers
02895776	4500	4 1/4"	2"	CCW	1/4"	Carrier, Draft Inducer
02895721	4500	4 1/4"	2 1/2"	CW	3/8"	
02895722	4500	4 1/4"	2 1/2"	CCW	3/8"	
02895777	4500	4 1/4"	2 15/16"	CCW	1/4"	Lennox, Carrier, Draft Inducers
02895725	3450	4 3/4"	2 1/16"	CW	1/2"	
02895726	3450	4 3/4"	2 1/16"	CCW	1/2"	
02895727	3450	4 3/4"	2 1/2"	CW	1/2"	
02895728	3450	4 3/4"	2 1/2"	CCW	1/2"	
02895729	3450	4 3/4"	2 15/16"	CW	1/2"	
02895730	3450	4 3/4"	2 15/16"	CCW	1/2"	
02895731	3450	4 3/4"	3 7/16"	CW	1/2"	
02895732	3450	4 3/4"	3 7/16"	CCW	1/2"	
02895733	3450	5 1/4"	2 1/16"	CW	1/2"	
02895734	3450	5 1/4"	2 1/16"	CCW	1/2"	
02895735	3450	5 1/4"	2 1/2"	CW	1/2"	Carrier
02895736	3450	5 1/4"	2 1/2"	CCW	1/2"	Carrier
02895737	3450	5 1/4"	2 15/16"	CW	1/2"	
02895738	3450	5 1/4"	2 15/16"	CCW	1/2"	
02895739	3450	5 1/4"	3 7/16"	CW	1/2"	
02895740	3450	5 1/4"	3 7/16"	CCW	1/2"	
02895778	3450	5 5/8"	1 9/16"	CCW	15/16"	Carrier, Draft Inducers
02895753	3450	5 3/4"	2 1/16"	CW	1/2"	
02895754	3450	5 3/4"	2 1/16"	CCW	1/2"	
02895755	3450	5 3/4"	2 1/2"	CW	1/2"	
02895756	3450	5 3/4"	2 1/2"	CCW	1/2"	
02895757	3450	5 3/4"	2 15/16"	CW	1/2"	
02895758	3450	5 3/4"	2 15/16"	CCW	1/2"	
02895759	3450	5 3/4"	3 7/16"	CW	1/2"	Friedrich
02895760	3450	5 3/4"	3 7/16"	CCW	1/2"	
02895761	3450	5 3/4"	3 13/16"	CW	1/2"	
02895762	3450	5 3/4"	3 13/16"	CCW	1/2"	
02895779	3450	5 3/4"	4"	CW	1/2"	
02895780	3450	5 3/4"	4"	CCW	1/2"	
02895781	3450	6 1/4"	4"	CW	1/2"	
02895782	3450	6 1/4"	4"	CCW	1/2"	

Specifications are subject to change without notice or obligation.

BLOWER WHEELS

GALVANIZED - 3 3/16" - 10" DIAMETER - CONTINUED

PART	MAX. RPM	DIA.	WIDTH	ROTATION	BORE	OEM APPLICATIONS
02895741	3450	6 5/16"	2 1/16"	CW	1/2"	
02895742	3450	6 5/16"	2 1/16"	CCW	1/2"	
02895743	3450	6 5/16"	2 1/2"	CW	1/2"	
02895744	3450	6 5/16"	2 1/2"	CCW	1/2"	
02895745	3450	6 5/16"	2 15/16"	CW	1/2"	
02895746	3450	6 5/16"	2 15/16"	CCW	1/2"	
02895747	3450	6 5/16"	3 7/16"	CW	1/2"	
02895748	3450	6 5/16"	3 7/16"	CCW	1/2"	
02895749	3450	6 5/16"	3 13/16"	CW	1/2"	
02895750	3450	6 5/16"	3 13/16"	CCW	1/2"	
02895751	3450	6 1/4"	4 1/4"	CW	1/2"	
02895752	3450	6 1/4"	4 1/4"	CCW	1/2"	
02049153	2500	7 3/32"	3 5/32"	CW	1/2"	
02049154	2500	7 3/32"	3 5/32"	CCW	1/2"	
02049155	2500	7 3/32"	4"	CW	1/2"	Carrier
02049156	2500	7 3/32"	4"	CCW	1/2"	Carrier
02049157	2500	7 1/2"	2"	CW	1/2"	
02049158	2500	7 1/2"	2"	CCW	1/2"	
02049115	2500	7 7/16"	2 1/4"	CW	1/2"	
02049142	2500	7 7/16"	2 1/4"	CCW	1/2"	
02049159	2500	7 1/2"	2 1/2"	CW	1/2"	
02049160	2500	7 1/2"	2 1/2"	CCW	1/2"	
02049161	2000	7 1/2"	2 3/4"	CW	1/2"	
02049162	2000	7 1/2"	2 3/4"	CCW	1/2"	
02049163	1800	7 1/2"	3 5/32"	CW	1/2"	
02049164	1800	7 1/2"	3 5/32"	CCW	1/2"	
02049124	1650	7 7/16"	2 3/4"	CW	1/2"	
02049125	1650	7 7/16"	2 3/4"	CCW	1/2"	
02049137	1650	7 7/16"	3 1/4"	CW	1/2"	
02049120	1650	7 7/16"	3 1/4"	CCW	1/2"	
02049165	1650	7 1/2"	4"	CW	1/2"	Carrier
02049166	1650	7 1/2"	4"	CCW	1/2"	Carrier
02048763	1650	8"	3 3/16"	CW	1/2"	
02048764	1650	8"	3 3/16"	CCW	1/2"	
02048765	1650	8"	4"	CW	1/2"	
02048766	1650	8"	4"	CCW	1/2"	
02048767	1650	8 1/2"	3 3/16"	CW	1/2"	
02048768	1650	8 1/2"	3 3/16"	CCW	1/2"	
02048705	1650	8 1/2"	3 3/4"	CW	1/2"	
02048706	1650	8 1/2"	3 3/4"	CCW	1/2"	
02048769	1650	8 1/2"	4"	CW	1/2"	
02048770	1650	8 1/2"	4"	CCW	1/2"	
02048771	1400	8 1/2"	4 1/4"	CW	1/2"	
02048772	1750	8 1/2"	4 1/4"	CCW	1/2"	
02048738	1750	8 1/2"	4 1/4"	CW	1/2"	
02048739	1750	8 1/2"	4 1/4"	CCW	1/2"	
02055338	1750	9"	5"	CW	1/2"	
02055339	1750	9"	5"	CCW	1/2"	
02055301	1750	9 1/8"	3 3/4"	CW	1/2"	
02055303	1750	9 1/8"	3 3/4"	CCW	1/2"	
02055302	1750	9 1/8"	4 1/4"	CW	1/2"	Carrier
02055304	1750	9 1/8"	4 1/4"	CCW	1/2"	Carrier
01351110	1750	9 15/16"	6"	CCW	5/8"	Fedders
02055340	1750	10"	4"	CW	1/2"	Thermadore
02055341	1750	10"	4"	CCW	1/2"	

Maximum Operating Temperature - 200°F.

SINGLE INLET BLOWER WHEELS



STEEL SHAFT ADAPTER BUSHINGS*

Zinc Finish

For use with single inlet wheels.



Part No.	Diameter		Length
	O.D.	I.D.	
029421-01	5/16"	1/4"	1"
029421-02	3/8"	1/4"	1 1/16"
029421-03	3/8"	5/16"	1 1/16"
029421-04	1/2"	5/16"	1 1/16"
029421-05	1/2"	3/8"	1 1/16"
029421-06	5/8"	1/2"	1 15/16"
029421-07	3/4"	5/8"	1 1/4"

* Must be ordered in multiples of 6.

TECHNICAL TIP:

Shaft adapters shown are used when a smaller bore diameter is required but not readily available. Use only one bushing for each hub.



Universal HVAC/R
Parts and Supplies

BLOWER WHEELS

SINGLE INLET BLOWER WHEELS



- Steel hub clamps
- Molded from high strength polymer material
- Superior acoustic characteristics
- **Maximum Operating Temperature - 150°F**

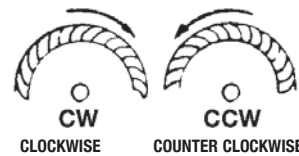
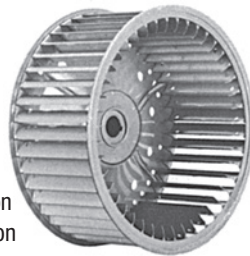
PLASTIC - 5 3/8" - 8 3/8" DIAMETER

MANUFACTURED FOR MANY OEMS AS NOTED BELOW:

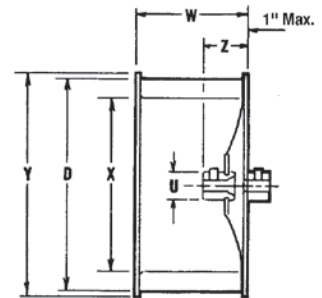
PART	MAX. RPM	DIA.	WIDTH	ROTATION	BORE	OEM APPLICATIONS
05379415	3450	5 3/8"	2 1/2"	CCW	1/2"	Frigidaire
05379401	3450	5 3/4"	2 1/2"	CCW	5/16"	Humidifiers Sears, Lau, etc.
05379402	3450	6 1/8"	3 7/8"	CW	1/2"	Carrier, GE, Trane
05379403	3450	6 1/8"	3 7/8"	CCW	1/2"	Carrier, GE, Trane
05379404	3450	6 7/8"	2 13/16"	CW	1/2"	Amana, Friedrich, Goodman
05379405	3450	6 7/8"	2 13/16"	CCW	1/2"	Amana, Friedrich, Goodman
05379406	2500	7 7/16"	3 9/16"	CW	1/2"	Friedrich
05379407	2500	7 7/16"	3 9/16"	CCW	1/2"	Friedrich
05379408	2500	7 1/2"	2 29/32"	CW	1/2"	Cold Point, Frigidaire
05379409	2000	7 5/8"	3 21/32"	CW	1/2"	Frigidaire, ICP
05379410	1800	7 25/32"	3 7/8"	CCW	1/2"	Amana
05379411	1650	8 1/16"	3 5/32"	CW	1/2"	Frigidaire, Friedrich
05379412	1650	8 3/8"	3 5/32"	CW	1/2"	Amana, Cold Point, Frigidaire
05379413	1650	8 3/8"	3 5/32"	CCW	1/2"	Amana, Cold Point, Frigidaire
05379414	1650	8 3/8"	3 5/8"	CW	1/2"	Amana, Cold Point, Frigidaire

GALVANIZED SINGLE INLET FOR LAU FGP & BD SERIES BLOWERS

- All steel galvanized construction
- Forward curved fan blades for quiet, efficient performance
- All wheels are dynamically balanced
- 10" - 18" diameter wheels are spun assembled construction
- 22" - 30" diameter wheels are precision-riveted construction
- **Maximum Operating Temperature - 200°F**



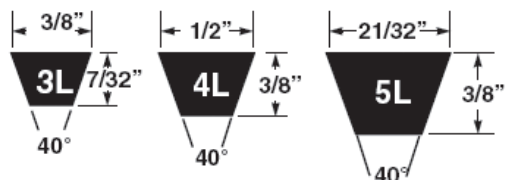
Rotation determined by viewing closed end of wheel (backplate).



PART	WHEEL MODEL	BORE SIZE	ROT.	MAX. WHEEL CAGE RPM	Y	W	D	X	U	Z	NO. HUBS	HUB LOC.	NO. SETSCREWS PER HUB	KEY WAY
012398-57	SI 10-6A	3/4"	CW	1650	11 1/8	6	10 5/8	8 7/8	1 3/4	2 29/32	1	In	2	None
012398-58	SI 10-6A	3/4"	CCW	1650	11 1/8	6	10 5/8	8 7/8	1 3/4	2 29/32	1	In	2	None
014747-08	SI 12-6A	3/4"	CW	1350	13 3/16	6	12 5/8	10 5/16	1 3/4	2 29/32	1	In	2	None
014747-09	SI 12-6A	3/4"	CCW	1350	13 3/16	6	12 5/8	10 5/16	1 3/4	2 29/32	1	In	2	None
014528-01	SI 15-6A	1"	CW	1200	15 1/2	6	15	12 5/8	1 3/4	3 7/32	1	In	2	None
014528-03	SI 15-6A	1"	CCW	1200	15 1/2	6	15	12 5/8	1 3/4	3 7/32	1	In	2	None
020740-01	SI 15-9A	1"	CW	1050	15 1/2	9 1/2	15	12 5/8	1 3/4	3 7/32	2	In-Out	2-0	None
020740-04	SI 15-9A	1"	CCW	1050	15 1/2	9 1/2	15	12 5/8	1 3/4	3 7/32	2	In-Out	2-0	None
020202-03	SI 18-9A	1"	CW	1050	18 5/8	9	18 1/8	14 11/16	2 3/4	2 25/32	2	In-Out	1-0	1/4 x 1/8
020202-04	SI 18-9A	1"	CCW	1050	18 5/8	9	18 1/8	14 11/16	2 3/4	2 25/32	2	In-Out	1-0	1/4 x 1/8
026186-01	SI 18-13A	1"	CW	960	18 5/8	13 1/2	18 1/8	14 11/16	2 3/4	3 5/16	2	In-Out	1-1	1/4 x 1/8
026186-02	SI 18-13A	1"	CCW	960	18 5/8	13 1/2	18 1/8	14 11/16	2 3/4	3 5/16	2	In-Out	1-1	1/4 x 1/8
019965-03+A	SI 22-11K	1 3/16"	CW	900	23 1/4	11 1/4	22	17 7/8	2 3/4	3 1/2	2	In-Out	2-1	1/4 x 1/8
019965-06+A	SI 22-11K	1 3/16"	CCW	900	23 1/4	11 1/4	22	17 7/8	2 3/4	3 1/2	2	In-Out	2-1	1/4 x 1/8
019966-05*+	SI 25-12K	1 3/16"	CW	750	26 1/4	12 3/4	25	20 7/8	2 3/4	3 1/2	2	In-Out	2-1	1/4 x 1/8
019966-04*+	SI 25-12K	1 3/16"	CCW	750	26 1/4	12 3/4	25	20 7/8	2 3/4	3 1/2	2	In-Out	2-1	1/4 x 1/8
021071-03*+	SI 27 1/2-14K	1 7/16"	CW	700	28 3/4	13 15/16	27 1/2	23 3/8	2 3/4	3 1/2	2	In-Out	2-1	1/4 x 1/8
021071-04*+	SI 27 1/2-14K	1 7/16"	CCW	700	28 3/4	13 15/16	27 1/2	23 3/8	2 3/4	3 1/2	2	In-Out	2-1	1/4 x 1/8
021072-03*+	SI 30-15K	1 7/16"	CW	625	31 1/4	15 3/16	30	25 7/8	2 3/4	4 1/8	2	In-Out	2-1	1/4 x 1/8
021072-04*+	SI 30-15K	1 7/16"	CCW	625	31 1/4	15 3/16	30	25 7/8	2 3/4	4 1/8	2	In-Out	2-1	1/4 x 1/8

* Braced + Must ship via common carrier. ^ Special Order Only - allow 6 to 8 weeks lead time.

FRACTIONAL HP V-BELTS



TOTALINE FHP V-Belts are built for maximum tension control, drive uniformity and long life, with minimum heat build-up and stretching on low horsepower electric motors and gasoline engines. They are designed for high speed operation and drive center distances as short as pulleys will allow.

3L SIZES

PART	OUTSIDE LENGTH (IN)
P465-3L150	15"
P465-3L160	16"
P465-3L170	17"
P465-3L180	18"
P465-3L190	19"
P465-3L200	20"
P465-3L210	21"
P465-3L220	22"
P465-3L230	23"
P465-3L240	24"
P465-3L250	25"
P465-3L260	26"
P465-3L270	27"
P465-3L280	28"
P465-3L290	29"
P465-3L300	30"
P465-3L310	31"
P465-3L320	32"
P465-3L330	33"
P465-3L340	34"
P465-3L350	35"
P465-3L360	36"
P465-3L370	37"
P465-3L380	38"
P465-3L390	39"
P465-3L400	40"
P465-3L410	41"
P465-3L420	42"
P465-3L430	43"
P465-3L440	44"
P465-3L450	45"
P465-3L460	46"
P465-3L470	47"
P465-3L480	48"
P465-3L490	49"
P465-3L500	50"
P465-3L510	51"
P465-3L520	52"
P465-3L530	53"
P465-3L540	54"
P465-3L550	55"
P465-3L560	56"
P465-3L570	57"
P465-3L580	58"
P465-3L590	59"
P465-3L600	60"
P465-3L610	61"
P465-3L620	62"
P465-3L630	63"

4L SIZES

PART	OUTSIDE LENGTH (IN)
P465-4L160	16"
P465-4L170	17"
P465-4L180	18"
P465-4L190	19"
P465-4L200	20"
P465-4L210	21"
P465-4L220	22"
P465-4L230	23"
P465-4L240	24"
P465-4L250	25"
P465-4L260	26"
P465-4L270	27"
P465-4L280	28"
P465-4L290	29"
P465-4L300	30"
P465-4L310	31"
P465-4L320	32"
P465-4L330	33"
P465-4L340	34"
P465-4L350	35"
P465-4L360	36"
P465-4L370	37"
P465-4L380	38"
P465-4L390	39"
P465-4L400	40"
P465-4L410	41"
P465-4L420	42"
P465-4L430	43"
P465-4L440	44"
P465-4L450	45"
P465-4L460	46"
P465-4L470	47"
P465-4L480	48"
P465-4L490	49"
P465-4L500	50"
P465-4L510	51"
P465-4L520	52"
P465-4L530	53"
P465-4L540	54"
P465-4L550	55"
P465-4L560	56"
P465-4L570	57"
P465-4L580	58"
P465-4L590	59"
P465-4L600	60"
P465-4L610	61"
P465-4L620	62"
P465-4L630	63"
P465-4L640	64"

5L SIZES

PART	OUTSIDE LENGTH (IN)
P465-4L650	65"
P465-4L660	66"
P465-4L670	67"
P465-4L680	68"
P465-4L690	69"
P465-4L700	70"
P465-4L710	71"
P465-4L720	72"
P465-4L730	73"
P465-4L740	74"
P465-4L750	75"
P465-4L760	76"
P465-4L770	77"
P465-4L780	78"
P465-4L790	79"
P465-4L800	80"
P465-4L810	81"
P465-4L820	82"
P465-4L830	83"
P465-4L840	84"
P465-4L850	85"
P465-4L860*	86"
P465-4L870*	87"
P465-4L880*	88"
P465-4L890*	89"
P465-4L900*	90"
P465-4L910*	91"
P465-4L920*	92"
P465-4L930*	93"
P465-4L940*	94"
P465-4L950*	95"
P465-4L960*	96"
P465-4L970*	97"
P465-4L980*	98"
P465-4L990*	99"
P465-4L1000*	100"
P465-5L230	23"
P465-5L240	24"
P465-5L250	25"
P465-5L260	26"
P465-5L270	27"
P465-5L280	28"
P465-5L290	29"
P465-5L300	30"
P465-5L310	31"
P465-5L320	32"
P465-5L330	33"
P465-5L340	34"
P465-5L350	35"

PART	OUTSIDE LENGTH (IN)
P465-5L360	36"
P465-5L370	37"
P465-5L380	38"
P465-5L390	39"
P465-5L400	40"
P465-5L410	41"
P465-5L420	42"
P465-5L430	43"
P465-5L440	44"
P465-5L450	45"
P465-5L460	46"
P465-5L470	47"
P465-5L480	48"
P465-5L490	49"
P465-5L500	50"
P465-5L510	51"
P465-5L520	52"
P465-5L530	53"
P465-5L540	54"
P465-5L550	55"
P465-5L560	56"
P465-5L570	57"
P465-5L580	58"
P465-5L590	59"
P465-5L600	60"
P465-5L610	61"
P465-5L620	62"
P465-5L630	63"
P465-5L640	64"
P465-5L650	65"
P465-5L660	66"
P465-5L670	67"
P465-5L680	68"
P465-5L690	69"
P465-5L700	70"
P465-5L710	71"
P465-5L720	72"
P465-5L730	73"
P465-5L740	74"
P465-5L750	75"
P465-5L760	76"
P465-5L770	77"
P465-5L780	78"
P465-5L790	79"
P465-5L800	80"
P465-5L810	81"
P465-5L820	82"
P465-5L830	83"
P465-5L840	84"

PART	OUTSIDE LENGTH (IN)
P465-5L850	85"
P465-5L860	86"
P465-5L870	87"
P465-5L880	88"
P465-5L890	89"
P465-5L900	90"
P465-5L910	91"
P465-5L920	92"
P465-5L930	93"
P465-5L940	94"
P465-5L950	95"
P465-5L960	96"
P465-5L970	97"
P465-5L980	98"
P465-5L990	99"
P465-5L1000	100"

*All belts are smooth



Universal HVAC/R
Parts and Supplies

TOTALINE® FAN BELTS

MULTIPLE V-BELTS



For multiple drive, high speed and high torque operation on light or heavy industrial or automotive machinery, TOTALINE Multiple V-Belts boast exceptional length, stability, and drive uniformity. Rigorous testing has shown these premium quality belts to have twice the service life or significantly greater transmission capacity than other multiple V-Belts.

A SIZES

PART	OUTSIDE LENGTH (IN)
P463-A20	22"
P463-A21	23"
P463-A22	24"
P463-A23	25"
P463-A24	26"
P463-A25	27"
P463-A26	28"
P463-A27	29"
P463-A28	30"
P463-A29	31"
P463-A30	32"
P463-A31	33"
P463-A32	34"
P463-A33	35"
P463-A34	36"
P463-A35	37"
P463-A36	38"
P463-A37	39"
P463-A38	40"
P463-A39	41"
P463-A40	42"
P463-A41	43"
P463-A42	44"
P463-A43	45"
P463-A44	46"
P463-A45	47"
P463-A46	48"
P463-A47	49"
P463-A48	50"
P463-A49	51"
P463-A50	52"
P463-A51	53"
P463-A52	54"
P463-A53	55"
P463-A54	56"
P463-A55	57"
P463-A56	58"
P463-A57	59"
P463-A58	60"
P463-A59	61"
P463-A60	62"
P463-A61	63"
P463-A62	64"
P463-A63	65"
P463-A64	66"
P463-A65	67"
P463-A66	68"
P463-A67	69"
P463-A68	70"
P463-A69	71"

PART	OUTSIDE LENGTH (IN)
P463-A70	72"
P463-A71	73"
P463-A72	74"
P463-A73	75"
P463-A74	76"
P463-A75	77"
P463-A76	78"
P463-A77	79"
P463-A78	80"
P463-A79	81"
P463-A80	82"
P463-A81	83"
P463-A82	84"
P463-A83	85"
P463-A84	86"
P463-A85	87"
P463-A86	88"
P463-A87	89"
P463-A88	90"
P463-A89	91"
P463-A90	92"
P463-A91	93"
P463-A92	94"
P463-A93	95"
P463-A94	96"
P463-A95	97"
P463-A96	98"
P463-A97	99"
P463-A98	100"
P463-A102	104"
P463-A105	107"
P463-A110	112"
P463-A116	118"
P463-A112	114"
P463-A120	122"
P463-A128	130"
P463-A136	138"
P463-A144	146"
P463-A158	160"
P463-A173	175"
P463-A180	182"
P463-AX20	22"
P463-AX22	24"
P463-AX23	25"
P463-AX25	27"
P463-AX26	28"
P463-AX27	29"
P463-AX28	30"
P463-AX29	31"
P463-AX30	32"

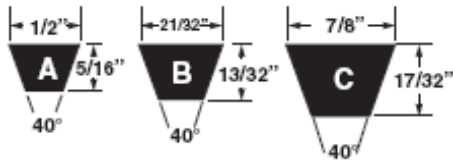
PART	OUTSIDE LENGTH (IN)
P463-AX31	33"
P463-AX32	34"
P463-AX33	35"
P463-AX34	36"
P463-AX35	37"
P463-AX36	38"
P463-AX37	39"
P463-AX38	40"
P463-AX39	41"
P463-AX40	42"
P463-AX41	43"
P463-AX42	44"
P463-AX43	45"
P463-AX44	46"
P463-AX45	47"
P463-AX46	48"
P463-AX47	49"
P463-AX48	50"
P463-AX49	51"
P463-AX50	52"
P463-AX51	53"
P463-AX52	54"
P463-AX53	55"
P463-AX54	56"
P463-AX55	57"
P463-AX58	58"
P463-AX60	62"
P463-AX62	64"
P463-AX63	65"
P463-AX64	66"
P463-AX66	68"
P463-AX67	69"
P463-AX70	72"
P463-AX71	73"
P463-AX78	80"
P463-AX80	82"
P463-AX90	92"
P463-AX112	114"

B SIZES

PART	OUTSIDE LENGTH (IN)
P463-B25	28"
P463-B26	29"
P463-B27	30"
P463-B28	31"
P463-B29	32"
P463-B34	37"
P463-B35	38"
P463-B36	39"
P463-B37	40"
P463-B38	41"
P463-B39	42"
P463-B40	43"
P463-B41	44"
P463-B42	45"
P463-B43	46"
P463-B44	47"
P463-B45	48"
P463-B46	49"
P463-B47	50"
P463-B48	51"
P463-B49	52"
P463-B50	53"
P463-B51	54"
P463-B52	55"
P463-B53	56"
P463-B54	57"
P463-B55	58"
P463-B56	59"
P463-B57	60"
P463-B58	61"
P463-B59	62"
P463-B60	63"
P463-B61	64"
P463-B62	65"
P463-B63	66"
P463-B64	67"
P463-B65	68"
P463-B66	69"
P463-B67	70"
P463-B68	71"
P463-B69	72"
P463-B70	73"
P463-B71	74"
P463-B72	75"
P463-B73	76"
P463-B74	77"

PART	OUTSIDE LENGTH (IN)
P463-B75	78"
P463-B76	79"
P463-B77	80"
P463-B78	81"
P463-B79	82"
P463-B80	83"
P463-B81	84"
P463-B82	85"
P463-B83	86"
P463-B84	87"
P463-B85	88"
P463-B86	89"
P463-B87	90"
P463-B88	91"
P463-B89	92"
P463-B90	93"
P463-B91	94"
P463-B92	95"
P463-B93	96"
P463-B94	97"
P463-B95	98"
P463-B96	99"
P463-B97	100"
P463-B100	103"
P463-B101	104"
P463-B103	105"
P463-B104	107"
P463-B105	108"
P463-B108	111"
P463-B111	114"
P463-B112	115"
P463-B115	118"
P463-B116	119"
P463-B120	123"
P463-B123	126"
P463-B124	127"
P463-B126	129"
P463-B129	132"
P463-B128	131"
P463-B133	136"
P463-B134	137"
P463-B136	139"
P463-B140	143"
P463-B142	145"
P463-B144	147"
P463-B148	151"
P463-B153	156"
P463-B154	157"
P463-B158	161"
P463-B162	165"

MULTIPLE V-BELTS – CONTINUED



B SIZES - CONTINUED

PART	OUTSIDE LENGTH (IN)
P463-B173	176"
P463-B180	183"
P463-B195	198"
P463-B210	213"
P463-B225	228"
P463-B240	243"
P463-B255	258"
P463-B270	273"
P463-B285	288"
P463-B300	303"
P463-B315	318"
P463-BX27	30"
P463-BX28	31"
P463-BX29	32"
P463-BX30	33"
P463-BX31	34"
P463-BX32	35"
P463-BX34	37"
P463-BX35	38"
P463-BX37	40"
P463-BX38	41"
P463-BX39	42"
P463-BX40	43"
P463-BX41	44"
P463-BX42	45"
P463-BX43	46"
P463-BX44	47"
P463-BX45	48"
P463-BX46	49"
P463-BX47	50"
P463-BX48	51"
P463-BX49	52"
P463-BX50	53"
P463-BX51	54"
P463-BX52	55"
P463-BX53	56"
P463-BX54	57"
P463-BX55	58"
P463-BX56	59"
P463-BX57	60"
P463-BX58	61"
P463-BX59	62"
P463-BX60	63"
P463-BX61	64"
P463-BX62	65"
P463-BX63	66"
P463-BX64	67"
P463-BX65	68"
P463-BX66	69"
P463-BX67	70"

C SIZES

PART	OUTSIDE LENGTH (IN)
P463-BX68	71"
P463-BX69	72"
P463-BX71	74"
P463-BX72	75"
P463-BX73	76"
P463-BX75	78"
P463-BX76	79"
P463-BX77	80"
P463-BX78	81"
P463-BX80	83"
P463-BX81	84"
P463-BX82	85"
P463-BX83	86"
P463-BX85	88"
P463-BX86	89"
P463-BX88	91"
P463-BX90	93"
P463-BX93	96"
P463-BX95	98"
P463-BX97	100"
P463-BX99	102"
P463-BX100	103"
P463-BX103	106"
P463-BX105	108"
P463-BX106	109"
P463-BX108	111"
P463-BX112	115"
P463-BX116	119"
P463-BX124	127"
P463-BX126	129"
P463-BX128	131"
P463-BX133	136"
P463-BX136	139"
P463-BX144	147"
P463-C51	55"
P463-C60	64"
P463-C68	72"
P463-C75	79"
P463-C81	85"
P463-C85	89"
P463-C90	94"
P463-C96	100"
P463-C100	104"
P463-C105	109"
P463-C109	113"
P463-C112	116"
P463-C115	119"
P463-C120	124"
P463-C128	132"
P463-C136	140"
P463-C144	148"
P463-C150	154"
P463-C158	162"
P463-C162	166"
P463-C173	177"
P463-C180	184"
P463-C195	199"
P463-C210	214"
P463-C225	229"
P463-C240	244"
P463-C255	259"
P463-C270	274"
P463-C285	289"
P463-C300	304"
P463-C315	319"
P463-C330	334"
P463-C345	349"
P463-C360	364"
P463-C390	394"
P463-C420	424"
P463-C450	454"
P463-C480	484"
P463-CX162	166"



Universal HVAC/R
Parts and Supplies

NARROW V-BELTS - COGGED

The unique design and superior quality of the TOTALINE Narrow V-Belt allow you to build or redesign drive systems using smaller pulleys, with shorter center distances (reducing system weight and space) and increased horsepower capacity (exceeding RMA standards by 23.6% average).

NOTE: The TOTALINE Narrow V-Belt in three section sizes is ideal for all applications covered by five section sizes of multiple V-belts. For multiple or single drives, the 3V replaces A, B, and C belts; the 5V replaces C and D belts; and the 8V replaces D and E belts.

3V SIZES

PART	OUTSIDE LENGTH (IN)
P464-3V215	22.63"
P464-3V250	25.63"
P464-3V265	27.63"
P464-3V280	28.63"
P464-3V300	30.63"
P464-3V315	32.63"
P464-3V335	34.63"
P464-3V355	36.63"
P464-3V375	38.63"
P464-3V400	40.63"
P464-3V425	43.13"
P464-3V450	45.63"
P464-3V475	48.13"
P464-3V500	50.63"
P464-3V530	53.63"
P464-3V560	56.63"
P464-3V600	60.63"
P464-3V630	63.63"
P464-3V670	67.63"
P464-3V710	71.63"
P464-3V750	75.63"
P464-3V800	80.63"
P464-3V850	85.63"
P464-3V900	90.63"
P464-3V950	95.63"
P464-3V1000	100.63"
P464-3V1060	106.63"
P464-3V1120	112.63"
P464-3V1180	118.63"
P464-3V1250	125.63"
P464-3V1320	132.63"
P464-3V1400	140.63"
P464-3VX215	21.5"
P464-3VX250	25"
P464-3VX265	26.5"
P464-3VX280	28"
P464-3VX300	30"
P464-3VX315	31.5"
P464-3VX335	33.5"
P464-3VX355	35.5"
P464-3VX375	37.5"
P464-3VX400	40"
P464-3VX425	42.5"
P464-3VX450	45"
P464-3VX475	47.5"
P464-3VX500	50"
P464-3VX530	53"
P464-3VX560	56"
P464-3VX600	60"
P464-3VX630	63"

5V SIZES

PART	OUTSIDE LENGTH (IN)
P464-3VX670	67"
P464-3VX710	71"
P464-3VX750	75"
P464-3VX800	80"
P464-3VX850	85"
P464-3VX900	90"
P464-3VX950	95"
P464-3VX1000	100"
P464-3VX1060	106"
P464-3VX1120	112"
P464-3VX1180	118.35"
P464-3VX1250	125"
P464-3VX1320	132"
P464-3VX1400	140"

PART	OUTSIDE LENGTH (IN)
P464-5V500	50.75"
P464-5V530	53.75"
P464-5V560	56.75"
P464-5V600	60.75"
P464-5V630	63.75"
P464-5V670	67.75"
P464-5V710	71.75"
P464-5V750	75.75"
P464-5V800	80.75"
P464-5V850	85.75"
P464-5V900	90.75"
P464-5V950	95.75"
P464-5V1000	100.75"
P464-5V1060	106.75"
P464-5V1120	112.75"
P464-5V1180	118.75"
P464-5V1250	125.75"
P464-5V1320	132.75"
P464-5V1400	140.75"
P464-5V1500	150.75"
P464-5V1600	160.75"
P464-5V1700	170.75"
P464-5V1800	180.75"
P464-5V1900	190.75"
P464-5V2000	200.75"
P464-5V2120	212"
P464-5V2240	224"
P464-5V2360	236"
P464-5V2500	250"
P464-5V2650	265"
P464-5V2800	280"
P464-5V3000	300"
P464-5V3150	315"
P464-5V3350	335"
P464-5V3550	355"
P464-5VX450	45"
P464-5VX470	47"
P464-5VX490	49"
P464-5VX500	50"
P464-5VX510	51"
P464-5VX530	53"
P464-5VX540	54"
P464-5VX550	55"
P464-5VX560	56"
P464-5VX570	57"
P464-5VX580	58"
P464-5VX590	59"
P464-5VX600	60"
P464-5VX610	61"
P464-5VX630	63"

PART	OUTSIDE LENGTH (IN)
P464-5VX650	65"
P464-5VX660	66"
P464-5VX670	67"
P464-5VX680	68"
P464-5VX690	69"
P464-5VX710	71"
P464-5VX730	73"
P464-5VX740	74"
P464-5VX750	75"
P464-5VX780	78"
P464-5VX800	80"
P464-5VX830	83"
P464-5VX840	84"
P464-5VX850	85"
P464-5VX860	86"
P464-5VX880	88"
P464-5VX900	90"
P464-5VX930	93"
P464-5VX950	95"
P464-5VX960	96"
P464-5VX1000	100"
P464-5VX1030	103"
P464-5VX1060	106"
P464-5VX1080	108"
P464-5VX1120	112"
P464-5VX1150	115"
P464-5VX1180	118"
P464-5VX1230	123"
P464-5VX1250	125"
P464-5VX1320	132"
P464-5VX1400	140"
P464-5VX1500	150"
P464-5VX1600	160"
P464-5VX1700	170"
P464-5VX1800	180"
P464-5VX1900	190"
P464-5VX2000	200"
P464-BX64	65.8"

BROWNING BELTS

FHP BELTS



We offer a full line of Browning Products - if you do not see them here, please call us they are available upon request.

- Wrapped construction provides smooth, quiet operation
- Formulated for maximum flexibility with smaller diameter sheaves
- Oil and heat resistant - static conducting

Note: The -C in the part number is a Carrier notation only. There is no different in the belt part that contains a C, versus one that does not.

PART	LENGTH		WT. LBS. (LESS BUSH)
	OUTSIDE	PITCH	
3L170	17.0	16.3	.05
3L180	18.0	17.3	.06
3L190	19.0	18.3	.06
3L200	20.0	19.3	.06
3L210	21.0	20.3	.06
3L220	22.0	21.3	0.07
3L230	23.0	22.3	0.07
3L240	24.0	23.3	0.08
3L250	25.0	24.3	0.08
4L170	17.0	16.0	0.10
4L180	18.0	17.0	0.10
4L190	19.0	18.0	0.11
4L200	20.0	19.0	0.11
4L210	21.0	20.0	0.12
4L220	22.0	21.0	0.12



SUPER GRIPNOTCH® BELTS

- Static conducting

PART	LENGTH		WT. LBS.
	OUTSIDE	PITCH	
A20	22.2	21.3	0.2
A21	23.2	22.3	0.2
A22	24.2	23.3	0.2
A23	25.2	24.3	0.2
A24	26.2	25.3	0.2
A25-C	27.2	26.3	0.2
A26	28.2	27.3	0.2
A27	29.2	28.3	0.2
A28	30.2	29.3	0.2
A29	31.2	30.3	0.2
A30	32.2	31.3	0.2
A31	33.2	32.3	0.21
A32	34.2	33.3	0.2
A33	35.2	34.3	0.2
A34	36.2	35.3	0.2
A35-C	37.2	36.3	0.2
A36	38.2	37.3	0.3
A37	39.2	38.3	0.3
A38	40.2	39.3	0.3
A39	41.2	40.3	0.3
A40	42.2	41.3	0.3
A41	43.2	42.3	0.3
A42-C	44.2	43.3	0.3
A43	45.2	44.3	0.3
A44-C	46.2	45.3	0.3
A45-C	47.2	46.3	0.3
A46	48.2	47.3	0.3
A47	49.2	48.3	0.3
A48	50.2	49.3	0.3
A49-C	51.2	50.3	0.4
A50	52.2	51.3	0.4
A51	53.2	52.3	0.4
A52	54.2	53.3	0.4
A53	55.2	54.3	0.4
A54	56.2	55.3	0.4
A55-C	57.2	56.3	0.4
A56	58.2	57.3	0.4
A57	59.2	58.3	0.4
A58-C	60.2	59.3	0.4
A59	61.2	60.3	0.4
A60	62.2	61.3	0.4
A61	63.2	62.3	0.4
A62	64.2	63.3	0.4
A64	66.2	65.3	0.4

PART	LENGTH		WT. LBS.
	OUTSIDE	PITCH	
A65	67.2	66.3	0.5
A66	68.2	67.3	0.5
A68	70.2	69.3	0.5
B108	111.0	109.8	1.2
B34	37.0	35.8	0.4
B35	38.0	36.8	0.4
B36	39.0	37.8	0.4
B38	41.0	39.8	0.4
B40	43.0	41.8	0.5
B41	44.0	42.9	0.5
B42	45.0	43.8	0.5
B43	46.0	44.8	0.5
B44	47.0	45.8	0.5
B45	48.0	46.8	0.5
B46	49.0	47.8	0.5
B47	50.0	48.8	0.5
B48	51.0	49.8	0.5
B49	52.0	50.8	0.6
B50	53.0	51.8	0.6
B51	54.0	52.8	0.6
B52	55.0	53.8	0.6
B53	56.0	54.6	0.6
B54	57.0	55.8	0.6
B55	58.0	56.8	0.6
B56	59.0	57.8	0.6
B57	60.0	58.8	0.7
B58	61.0	59.8	0.7
B59	62.0	60.8	0.7
B60	63.0	61.8	0.7
B61	64.0	62.8	0.7
B62-C	65.0	63.8	0.7
B63	66.0	64.8	0.7
B64	67.0	65.8	0.7
B65	68.0	66.8	0.7
B66	69.0	67.8	0.7
B67	70.0	68.8	0.7
B68	71.0	69.8	0.7
B70	73.0	71.8	0.8
B71	74.0	72.8	0.8
B72	75.0	73.8	0.8
B75-C	78.0	76.8	0.8
B81	84.0	82.8	0.9
B85	88.0	86.8	0.9
B90	93.0	91.8	1.0



Universal HVAC/R
Parts and Supplies

BROWNING BELTS

GRIPNOTCH® BELTS



- Precision molded raw edge construction
- More horsepower in less space
- Notches are molded extra deep
- Oil and heat resistant
- Static conducting

Note: The -C in the part number is a Carrier notation only. There is no different in the belt part that contains a C, versus one that does not.

PART	LENGTH OUTSIDE	PITCH	WT. LBS.
AX20	22.2	21.3	0.2
AX21	23.2	22.3	0.2
AX22	24.2	23.3	0.2
AX23	25.2	24.3	0.2
AX24	26.2	25.3	0.2
AX25	27.2	26.3	0.2
AX26	28.2	27.3	0.2
AX27	29.2	28.3	0.2
AX28	30.2	29.3	0.2
AX29	31.2	30.3	0.2
AX30	32.2	31.3	0.2
AX31	33.2	32.3	0.2
AX32	34.2	33.3	0.2
AX33	35.2	34.3	0.2
AX34-C	36.2	35.3	0.2
AX35	37.2	36.3	0.2
AX36	38.2	37.3	0.3
AX37	39.2	38.3	0.3
AX38	40.2	39.3	0.3
AX39	41.2	40.3	0.3
AX40	42.2	41.3	0.3
AX41	43.2	42.3	0.3
AX42	44.2	43.3	0.3
AX43	45.2	44.3	0.3
AX44	46.2	45.3	0.3
AX45	47.2	46.3	0.3
AX46	48.2	47.3	0.3
AX47	49.2	48.3	0.3
AX48	50.2	49.3	0.3
AX49	51.2	50.3	0.4
AX50	52.2	51.3	0.4
AX51-C	53.2	52.3	0.4
AX52	54.2	53.3	0.4
AX53	55.2	54.3	0.4
AX54	56.2	55.3	0.4
AX55	57.2	56.3	0.4
AX56	58.2	57.3	0.4
AX57	59.2	58.3	0.4
AX58	60.2	59.3	0.4
AX60	62.2	61.3	0.4
AX62	64.2	63.3	0.4
AX64	66.2	65.3	0.4

PART	LENGTH		WT. LBS.
	OUTSIDE	PITCH	
BX28	31.0	29.8	0.4
BX32	35.0	33.8	0.4
BX34	37.0	35.8	0.4
BX35	38.0	36.8	0.4
BX36	39.0	37.8	0.4
BX38-C	41.0	39.8	0.4
BX40	43.0	41.8	0.5
BX41	44.0	42.8	0.5
BX42	45.0	43.8	0.5
BX43	46.0	44.8	0.5
BX44	47.0	45.8	0.5
BX45	48.0	46.8	0.5
BX46	49.0	47.8	0.5
BX47	50.0	48.8	0.5
BX48	51.0	49.8	0.6
BX49	52.0	50.8	0.6
BX50	53.0	51.8	0.6
BX51-C	54.0	52.8	0.6
BX52	55.0	53.8	0.6
BX53	56.0	54.8	0.6
BX54-C	67.0	55.8	0.6
BX55	58.0	56.8	0.6
BX56	59.0	57.8	0.6
BX57	60.0	58.8	0.6
BX58	61.0	59.8	0.6
BX59	62.0	60.8	0.7
BX60	63.0	61.8	0.7
BX61	64.0	62.8	0.7
BX62	65.0	63.8	0.7
BX63-C	66.0	64.8	0.7
BX64	67.0	65.8	0.7
BX65-C	68.0	66.8	0.8
BX66	69.0	67.8	0.8
BX67	70.0	68.8	0.8
BX68	71.0	69.8	0.8
BX70-C	73.0	71.8	0.8
BX71	74.0	72.8	0.8
BX73	76.0	74.8	0.8
BX74	77.0	75.8	0.8
BX75	78.0	76.8	0.9
BX77	80.0	78.8	0.9
BX78	81.0	79.8	0.9
BX80	83.0	81.8	0.9
BX81	84.0	82.8	0.9
BX83	86.0	84.8	1.0
BX85	88.0	86.8	1.0
BX88	91	89.8	1.0
BX90	93.0	91.8	1.1
BX93	94.8	93.0	1.2
BX95	98.0	96.8	1.1
BX96	99.0	97.8	1.1
BX97-C	100.0	98.8	1.1
BX103	106.0	104.8	1.2
BX108	111.0	109.8	1.3

"358" GRIPBELT® AND GRIPNOTCH® BELTS

- Oil and heat resistant
- More horsepower in less space
- Static conducting

PART	TYPE	OUTSIDE LENGTH	WT. LBS.
3VX250	NOTCHED TYPE	25	0.1
3VX265	NON-NOTCHED TYPE	26.5	0.1
3VX280	NOTCHED TYPE	28	0.1
3VX300	NON-NOTCHED TYPE	30	0.1
3VX315	NOTCHED TYPE	31.5	0.1
3VX335	NOTCHED TYPE	33.5	0.1
3VX355	NOTCHED TYPE	35.5	0.2
3VX375	NOTCHED TYPE	37.5	0.2
3VX400	NOTCHED TYPE	40	0.2
3VX425	NOTCHED TYPE	42.5	0.2
3VX450	NOTCHED TYPE	45	0.2
3VX475	NOTCHED TYPE	47.5	0.2
3VX500	NOTCHED TYPE	50	0.2
3VX530	NOTCHED TYPE	53	0.2
3VX560	NOTCHED TYPE	56	0.2
3VX600	NOTCHED TYPE	60	0.3
3VX630	NOTCHED TYPE	63	0.3
3VX670	NOTCHED TYPE	67	0.3
3VX710	NOTCHED TYPE	71	0.3
3VX750	NOTCHED TYPE	75	0.3
3VX800	NOTCHED TYPE	80	0.4
3VX850	NOTCHED TYPE	85	0.4
3VX900	NOTCHED TYPE	90	0.4
3VX950	NOTCHED TYPE	95	0.4
5VX450	NOTCHED TYPE	45	0.4
5VX470	NOTCHED TYPE	47	0.5
5VX490	NOTCHED TYPE	49	0.5
5VX500	NON-NOTCHED TYPE	50	0.6
5VX510	NOTCHED TYPE	51	0.6
5VX530	NON-NOTCHED TYPE	53	0.6
5VX540	NOTCHED TYPE	54	0.6
5VX550	NOTCHED TYPE	55	0.6
5VX560	NON-NOTCHED TYPE	56	0.6
5VX570	NOTCHED TYPE	57	0.6

PART	TYPE	OUTSIDE LENGTH	WT. LBS.
5VX580	NOTCHED TYPE	58	0.6
5VX590	NOTCHED TYPE	59	0.6
5VX600	NON-NOTCHED TYPE	60	0.7
5VX610	NOTCHED TYPE	61	0.7
5VX630	NOTCHED TYPE	63	0.7
5VX650	NOTCHED TYPE	65	0.7
5VX660	NOTCHED TYPE	66	0.8
5VX670	NOTCHED TYPE	67	0.8
5VX680	NOTCHED TYPE	68	0.8
5VX690	NOTCHED TYPE	69	0.8
5VX710	NOTCHED TYPE	71	0.8
5VX730	NOTCHED TYPE	73	0.8
5VX740	NOTCHED TYPE	74	0.8
5VX750	NOTCHED TYPE	75	0.8
5VX780	NOTCHED TYPE	78	0.8
5VX800	NOTCHED TYPE	80	0.9
5VX810	NOTCHED TYPE	81	0.9
5VX830	NOTCHED TYPE	83	0.9
5VX840	NOTCHED TYPE	84	0.9
5VX850	NOTCHED TYPE	85	0.9
5VX860	NOTCHED TYPE	86	0.9
5VX880	NOTCHED TYPE	88	0.9
5VX900	NOTCHED TYPE	90	1.0
5VX930	NOTCHED TYPE	93	1.0
5VX950	NOTCHED TYPE	95	1.0
5VX960	NOTCHED TYPE	96	1.0



Universal HVAC/R
Parts and Supplies

BROWNING SHEAVES

BROWNING

We offer a full line of Browning Products - if you do not see them here, please call us they are available upon request.



1VP CAST IRON SHEAVES

single groove variable pitch sheaves for "3L", "4L", "5L", "A", "B" and "5V" belts

PART	DIAMETER	BORE (IN.)	WT. LBS. (LESS BUSH)
1VP 56 X 1 1/8	5.35	1 1/8	3
1VP40X5/8	3.75	5/8	1.7
1VP40X7/8-C	3.75	7/8	1.7
1VP44X 1 1/8	4.15	1 1/8	2
1VP44X5/8	4.15	5/8	2
1VP44X7/8-C	4.15	7/8	2
1VP50X 1 1/8	4.75	1 1/8	2.9
1VP56X5/8	5.35	5/8	3.4
1VP56X7/8-C	5.35	7/8	3.4
1VP60X-1-1/8-C	6	1 1/8	5.5
1VP62X 1 1/8	5.95	1 1/8	5.7
1VP65X 1 1/8	6.5	1 1/8	5.8

2VP CAST IRON SHEAVES

single groove variable pitch sheaves for "3L", "4L", "5L", "A", "B" and "5V" belts

PART	DIAMETER	BORE (IN.)	WT. LBS. (LESS BUSH)
2VP42X 1 1/8	3.95	1 1/8	2.6
2VP42X7/8	3.95	7/8	2.6
2VP50X 1 1/8	4.75	1 1/8	5.4
2VP56X 1 1/8	5.35	1 1/8	6.6
2VP60X 1 1/8	6	1 1/8	10.2
2VP60X 1 3/8	6	1 3/8	10.2
2VP62X 1 3/8	5.95	1 3/8	10.5

CAST IRON VL VARIABLE PITCH SHEAVES

"VL" Sheaves are furnished with standard keyseats and hollow head setscrews

PART	DIAMETER	BORE (IN.)	WT. LBS. (LESS BUSH)
1VL25X1/2	2.5	1/2	0.8
1VL25X5/8	2.5	5/8	0.8
1VL30X1/2	2.87	1/2	0.9
1VL30X5/8	2.87	5/8	0.9
1VL34X1/2	3.15	1/2	1.2
1VL34X5/8	3.15	5/8	1.2
1VL40X1/2	3.75	1/2	1.7
1VL40X5/8	3.75	5/8	1.7
1VL40X7/8-C	3.75	7/8	1.7
1VL44X1/2	4.15	1/2	1.9
1VL44X5/8	4.15	5/8	1.9
1VL44X7/8	4.15	7/8	1.9
1VM50X5/8	4.75	5/8	1.9
1VM50X7/8	4.75	7/8	1.9



Universal HVAC/R
Parts and Supplies

TOTALINE® CAPACITORS

AC CAPACITORS

FOR MOTOR RUN APPLICATIONS



This capacitor series is designed specifically for the motor run applications where the capacitors are used in conjunction with permanent split capacitor type motors. They may be used on either 50 or 60-Hertz systems but should not be used at higher frequencies or in applications where higher frequency harmonics are present. For those types of applications the General Purpose AC Capacitors should be used.

FEATURES AND BENEFITS

- Reliability tested to meet 60,000 service hours, per United Technologies application parameters
- High grade metallized Polypropylene Film (5 to 12 microns thick)
- RoHS Compliant
- UL Approved with Pressure Sensitive interrupter of 1000 AFC
- Performance tested per United Technologies reliability requirements for capacitance ratings, power factor, dissipation factor and high voltage testing

PRODUCT RANGE

- Capacitance: 5uF to 80uF
- Tolerance: +/- 6%
- Voltage: 370 to 440 VAC
- Op Temp: -29° to +68° C

Note: Distributors that have historically stocked 440 volt and 370 volt capacitors round and / or oval designs can standardize inventory to use a 440 volt capacitors as replacement for a 370 volt capacitor provided the capacitance in (Mfd.) stays exactly the same.

Warning Note: Under no circumstances are we recommending usage of a 370 volt capacitor to replace a 440 volt capacitor. Also our capacitor straps are designed to secure and ground the capacitor, so we don't recommend mixing oval or round capacitor designs.

OVAL MOTOR RUN CAPACITOR - DUAL

CAP GRP	RCD P/N	VOLTAGE (VAC)	CAPACITANCE (µF) MFD	DIA	HEIGHT
Oval Dual	P291-0553	370	5/5	1.8	2.6
Oval Dual	P291-0773	370	7.5/7.5	1.8	3.1
Oval Dual	P291-1013	370	10/10	1.8	3.3
Oval Dual	P291-1513	370	15/10	1.8	3.3
Oval Dual	P291-1543	370	15/4	1.8	3.1
Oval Dual	P291-1553	370	15/5	1.8	3.1
Oval Dual	P291-1554	440	15/5	1.8	3.1
Oval Dual	P291-1573	370	15/7.5	1.8	3.3
Oval Dual	P291-2053	370	20/5	1.8	3.3
Oval Dual	P291-2054	440	20/5	1.8	3.5
Oval Dual	P291-2074	440	20/7.5	1.8	3.9
Oval Dual	P291-2513	370	25/10	1.8	3.7
Oval Dual	P291-2543	370	25/4	1.8	3.5
Oval Dual	P291-2553	370	25/5	1.8	3.5
Oval Dual	P291-2554	440	25/5	1.8	3.9
Oval Dual	P291-2573	370	25/7.5	1.8	3.5
Oval Dual	P291-2574	440	25/7.5	1.9	3.7
Oval Dual	P291-3013	370	30/10	1.9	3.5
Oval Dual	P291-3014	440	30/10	1.9	4.1
Oval Dual	P291-3053	370	30/5	1.8	3.7
Oval Dual	P291-3054	440	30/5	1.9	4.1
Oval Dual	P291-3073	370	30/7.5	1.8	3.7
Oval Dual	P291-3074	440	30/7.5	1.9	4.1
Oval Dual	P291-3514	440	35/10	1.9	4.5
Oval Dual	P291-3523	370	35/12.5	1.9	3.7
Oval Dual	P291-3543	370	35/4	1.9	3.7
Oval Dual	P291-3553	370	35/5	1.9	3.7
Oval Dual	P291-3554	440	35/5	1.9	4.5
Oval Dual	P291-3554S	440	35/5	1.8	4.9
Oval Dual	P291-3573	370	35/7.5	1.9	3.7

CAP GRP	RCD P/N	VOLTAGE (VAC)	CAPACITANCE (µF) MFD	DIA	HEIGHT
Oval Dual	P291-3574	440	35/7.5	1.9	4.5
Oval Dual	P291-4014	440	40/10	1.9	4.7
Oval Dual	P291-4053	370	40/5	1.9	4.1
Oval Dual	P291-4053S	370	40/5	1.9	4.3
Oval Dual	P291-4054	440	40/5	1.9	4.5
Oval Dual	P291-4073	370	40/7.5	1.9	4.1
Oval Dual	P291-4074	440	40/7.5	1.9	4.7
Oval Dual	P291-4513	370	45/10	1.9	4.3
Oval Dual	P291-4553	370	45/5	1.9	4.3
Oval Dual	P291-4554	440	45/5	1.9	4.7
Oval Dual	P291-4554S	440	45/5	1.9	5.5
Oval Dual	P291-4573	370	45/7.5	1.9	4.3
Oval Dual	P291-4574	440	45/7.5	1.9	4.9
Oval Dual	P291-5014	440	50/10	1.9	5.1
Oval Dual	P291-5053	370	50/5	1.9	4.7
Oval Dual	P291-5054	440	50/5	1.9	4.9
Oval Dual	P291-5074	440	50/7.5	1.9	4.9
Oval Dual	P291-5513	370	55/10	1.9	5.3
Oval Dual	P291-5553	370	55/5	1.9	5.3
Oval Dual	P291-5554	440	55/5	1.9	5.3
Oval Dual	P291-5574	440	55/7.5	1.9	5.3
Oval Dual	P291-6013	370	60/10	1.9	5.5
Oval Dual	P291-6014	440	60/10	1.9	5.5
Oval Dual	P291-6053	370	60/5	1.9	5.3
Oval Dual	P291-7053	370	70/5	1.9	5.7
Oval Dual	P291-8013	370	80/10	1.9	6.3
Oval Dual	P291-8053	370	80/5	1.9	6.3
Oval Dual	P291-8054	440	80/5	1.9	6.3
Oval Dual	P291-8073	370	80/7.5	1.9	6.3



Universal HVAC/R
Parts and Supplies

OVAL MOTOR RUN CAPACITOR - SINGLE

CAP GRP	RCD P/N	VOLTAGE (VAC)	CAPACITANCE (μF) MFD	DIA	HEIGHT
Oval Single	P291-0203	370	2	1.2	2.6
Oval Single	P291-0303	370	3	1.2	2.6
Oval Single	P291-0304	440	3	1.2	2.6
Oval Single	P291-0403	370	4	1.2	2.8
Oval Single	P291-0404	440	4	1.2	2.8
Oval Single	P291-0503	370	5	1.2	2.8
Oval Single	P291-0504	440	5	1.2	3.1
Oval Single	P291-0603	370	6	1.2	3.1
Oval Single	P291-0604	440	6	1.2	3.1
Oval Single	P291-0753	370	7.5	1.2	3.5
Oval Single	P291-0754	440	7.5	1.2	3.5
Oval Single	P291-1003	370	10	1.2	3.5
Oval Single	P291-1004	440	10	1.2	4.1
Oval Single	P291-1253	370	12.5	1.2	3.5
Oval Single	P291-1254	440	12.5	1.2	4.5
Oval Single	P291-1503	370	15	1.2	3.7
Oval Single	P291-1504	440	15	1.2	4.5
Oval Single	P291-1753	370	17.5	1.2	4.1
Oval Single	P291-1754	440	17.5	1.8	3.1
Oval Single	P291-2003	370	20	1.2	4.3
Oval Single	P291-2004	440	20	1.8	3.1
Oval Single	P291-2503	370	25	1.8	3.1
Oval Single	P291-2503S	370	25	1.2	4.9

CAP GRP	RCD P/N	VOLTAGE (VAC)	CAPACITANCE (μF) MFD	DIA	HEIGHT
Oval Single	P291-2504	440	25	1.8	3.5
Oval Single	P291-3003	370	30	1.8	3.3
Oval Single	P291-3003S	370	30	1.2	5.3
Oval Single	P291-3004	440	30	1.8	3.9
Oval Single	P291-3503	370	35	1.8	3.7
Oval Single	P291-3504	440	35	1.8	4.3
Oval Single	P291-4003	370	40	1.8	3.9
Oval Single	P291-4004	440	40	1.9	3.5
Oval Single	P291-4503	370	45	1.9	3.5
Oval Single	P291-4504	440	45	1.9	3.7
Oval Single	P291-5003	370	50	1.9	3.5
Oval Single	P291-5004	440	50	1.9	3.9
Oval Single	P291-5503	370	55	1.9	3.5
Oval Single	P291-5504	440	55	1.9	4.1
Oval Single	P291-6003	370	60	1.9	3.7
Oval Single	P291-6004	440	60	1.9	4.3
Oval Single	P291-6503	370	65	1.9	3.7
Oval Single	P291-6504	440	65	1.9	4.5
Oval Single	P291-7003	370	70	1.9	3.9
Oval Single	P291-7004	440	70	1.9	4.7
Oval Single	P291-8003	370	80	1.9	4.3
Oval Single	P291-8004	440	80	1.9	4.9

ROUND MOTOR RUN CAPACITOR - DUAL

CAP GRP	RCD P/N	VOLTAGE (VAC)	CAPACITANCE (µF) MFD	DIA	HEIGHT
Round Dual	P291-1553RS	370	15/5	2.0	3.5
Round Dual	P291-1554RS	440	15/5	2.0	4.3
Round Dual	P291-2053R	370	20/5	2.0	3.7
Round Dual	P291-2054RS	440	20/5	2.0	4.6
Round Dual	P291-2513R	370	25/10	2.5	4.3
Round Dual	P291-2534R	440	25/3	2.0	4.4
Round Dual	P291-2553RS	370	25/5	2.0	3.9
Round Dual	P291-2554R	440	25/5	2.5	4.3
Round Dual	P291-2554RS	440	25/5	2.0	4.8
Round Dual	P291-2573R	370	25/7.5	2.5	3.7
Round Dual	P291-2573RS	370	25/7.5	2.0	4.3
Round Dual	P291-3013RS	370	30/10	2.0	4.4
Round Dual	P291-3033R	370	30/3	2.0	4.1
Round Dual	P291-3053RS	370	30/5	2.0	4.1
Round Dual	P291-3054R	440	30/5	2.5	4.3
Round Dual	P291-3054RS	440	30/5	2.0	5.2
Round Dual	P291-3073R	370	30/7.5	2.5	3.7
Round Dual	P291-3073RS	370	35/10	2.0	4.4
Round Dual	P291-3513RS	370	35/3	2.0	4.8
Round Dual	P291-3533R	370	35/3	2.0	4.4
Round Dual	P291-3534R	440	35/3	2.5	4.3
Round Dual	P291-3553RS	370	35/5	2.0	4.4
Round Dual	P291-3554RS	440	35/7.5	2.0	5.2
Round Dual	P291-3573R	370	35/7.5	2.5	3.7
Round Dual	P291-3573RS	370	35/7.5	2.0	4.8
Round Dual	P291-3574RS	440	35/7.5	2.0	5.2
Round Dual	P291-4033R	370	40/3	2.0	4.6
Round Dual	P291-4034R	440	40/3	2.5	4.3
Round Dual	P291-4053RS	370	40/5	2.0	4.6
Round Dual	P291-4054RS	440	40/5	2.0	5.8
Round Dual	P291-4073RS	370	40/7.5	2.0	5.0

CAP GRP	RCD P/N	VOLTAGE (VAC)	CAPACITANCE (µF) MFD	DIA	HEIGHT
Round Dual	P291-4074RS	440	40/7.5	2.0	5.6
Round Dual	P291-4513RS	370	45/10	2.0	5.2
Round Dual	P291-4533R	370	45/3	2.0	4.8
Round Dual	P291-4553RS	370	45/5	2.0	4.8
Round Dual	P291-4554RS	440	45/5	2.5	4.4
Round Dual	P291-4573RS	370	45/7.5	2.0	5.2
Round Dual	P291-4574RS	440	45/7.5	2.5	4.8
Round Dual	P291-5053RS	370	50/5	2.0	5.2
Round Dual	P291-5054RS	440	50/5	2.5	4.8
Round Dual	P291-5073RS	370	50/7.5	2.0	5.4
Round Dual	P291-5513R	370	55/10	2.5	4.6
Round Dual	P291-5514RS	440	55/10	2.5	5.2
Round Dual	P291-5553RS	370	55/5	2.5	4.3
Round Dual	P291-5554RS	440	55/5	2.5	4.4
Round Dual	P291-5573RS	370	55/7.5	2.5	4.3
Round Dual	P291-5574RS	440	55/7.5	2.5	5.2
Round Dual	P291-6013R	370	60/10	2.5	4.8
Round Dual	P291-6053RS	370	60/5	2.5	4.6
Round Dual	P291-6054R	440	60/5	2.5	5.2
Round Dual	P291-6073RS	370	60/7.5	2.5	4.6
Round Dual	P291-6074R	440	60/7.5	2.5	5.2
Round Dual	P291-7013RS	370	70/10	2.5	5.2
Round Dual	P291-7053RS	370	70/5	2.5	4.8
Round Dual	P291-7054R	440	70/5	2.5	5.4
Round Dual	P291-7073RS	370	70/7.5	2.5	4.8
Round Dual	P291-7554R	440	75/5	2.5	5.6
Round Dual	P291-8013RS	370	80/10	2.5	5.4
Round Dual	P291-8053RS	370	80/5	2.5	5.2
Round Dual	P291-8054RS	440	80/5	2.5	5.8
Round Dual	P291-8073RS	370	80/7.5	2.5	5.2

ROUND MOTOR RUN CAPACITOR - SINGLE

CAP GRP	RCD P/N	VOLTAGE (VAC)	CAPACITANCE (µF) MFD	DIA	HEIGHT
Round Single	P291-0503R	370	5	1.8	2.9
Round Single	P291-0753R	370	7.5	1.8	2.9
Round Single	P291-1003R	370	10	1.8	2.9
Round Single	P291-1004R	440	10	1.8	2.9
Round Single	P291-1253R	370	12.5	1.8	2.9
Round Single	P291-1503R	370	15	1.8	3.3
Round Single	P291-1504R	440	15	1.8	3.3
Round Single	P291-2003R	370	20	1.8	3.5
Round Single	P291-2004R	440	20	1.8	3.5
Round Single	P291-2503R	370	25	1.8	3.5
Round Single	P291-2503RS	370	25	1.8	3.5
Round Single	P291-2504R	440	25	1.8	4.1
Round Single	P291-3003R	370	30	1.8	4.3

CAP GRP	RCD P/N	VOLTAGE (VAC)	CAPACITANCE (µF) MFD	DIA	HEIGHT
Round Single	P291-3004R	440	30	1.8	4.3
Round Single	P291-3504R	440	35	1.8	4.6
Round Single	P291-4003R	370	40	2.0	3.9
Round Single	P291-4004R	440	40	1.8	5.2
Round Single	P291-4503R	370	45	2.5	4.3
Round Single	P291-4504RS	440	45	2.0	4.8
Round Single	P291-5003R	370	50	2.5	4.3
Round Single	P291-5004R	440	50	2.5	4.3
Round Single	P291-5504R	440	55	2.5	4.4
Round Single	P291-6004R	440	60	2.5	4.4
Round Single	P291-6503R	370	65	2.5	4.3
Round Single	P291-8003R	370	80	2.5	5.2



Universal HVAC/R
Parts and Supplies

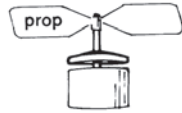
PARTS & ACCESSORIES

PROPELLER ACCESSORIES

RAINSHIELDS



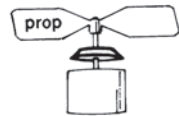
7"



Interior cooling blades force air over motor. Use 7" diameter for open type motors.



3 1/2"



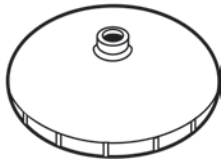
Position rainshield between propeller and motor. Use 3 1/2" diameter for closed motors.

An inexpensive way to reduce the potential of rain getting into the motor bearings on vertical shaft motor applications. Use primarily for vertical shaft motors on outdoor condensing units, but can also be used in any position to keep water from migrating along the shaft.

- Simple press fit on the 1/2" to 5/8" shafts
- 7" with interior cooling blades effectively reduces motor winding temperature and protects open motors
- 3 1/2" for closed motors to protect bearings
- Used as original equipment on many new air conditioners

PART	SINGLE SIZE
60385303	3 1/2" x 1/2"
60379501	7" x 1/2"
60379502	7" x 5/8"

FINNED PLASTIC RAINSHIELD

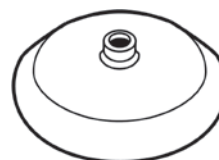


Finned plastic rainshield provides additional motor cooling by drawing air through motor. For use with vertically mounted condenser motors in shaft up position.

Outside Diameter: 7 1/2"

PART	BORE SIZE
P251-0056	1/2"
P251-0057	5/8"

PLASTIC SLINGER RAINSHIELD

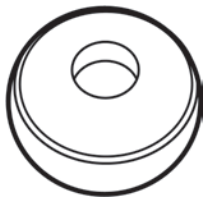


Plastic slinger for use with vertically mounted condenser motors in shaft up position.

Outside Diameter: 3 1/2"

PART	BORE SIZE
P251-0058	1/2"
P251-0059	5/8"

PLASTIC RAINSHIELD

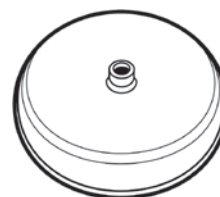


Plastic rainshield for use with vertically mounted condenser motors in shaft up position.

Outside Diameter: 7 3/10"

PART	BORE SIZE
P251-0052	5/8"

METAL RAINSHIELD



Metal rainshield with rubber grommet to fit bearing hub protects motor windings only. Bearing slinger P251-0059 is also required for shaft bearing protection.

Aluminum rainshield for use with vertically mounted condenser motor in shaft up position.

Outside Diameter: 6 3/10"

PART	BORE SIZE
P251-0051	1/2"

Specifications are subject to change without notice or obligation.

HUB PULLERS



GENERAL DUTY APPLICATIONS

- Precision machined
- 5/8" steel bolt machined and tapered on one end
- 1 1/4" threading into body resists stripping
- Standard 7/8" wrench fitting
- Four grab bolts for maximum holding power
- Torque Limit: 75 ft. lbs



HEAVY DUTY APPLICATIONS

- Zinc plated, heavy steel construction
- Sight holes for visual alignment of puller and motor shaft
- Four square head cup point grab bolts
- 5/8" bolt will not bend with proper use
- Bar top – grip with wrench
- 1/4" steel collar
- 1" long threaded surface
- Torque Limit: 75 ft. lbs

HUB PULLERS / REPLACEMENT PARTS

HUB PULLER	REPLACEMENT FINGERS (SET OF 4)	MAIN CENTER SHAFT	CENTERING SLEEVE
05380401 - General Duty	05249901	05249701	05249801
05214101 - Heavy Duty	05221101	05221201	05221301

PITCH GAUGE



PART
05099801

EVERY TOOLBOX NEEDS A LAU PITCH GAUGE

Eliminate the guesswork when replacing old propellers. Lau's pitch gauge measures the correct pitch and direction of rotation.

FOLLOW THESE 3 STEPS TO MEASURE PROPELLER ROTATION AND PITCH:



STEP 1

Position the faceplate of the gauge on the blade of the fan

STEP 2

Place the foot of the wire body of the pitch gauge on the center section (spider) of the fan

STEP 3

The pointer gives a direct reading of the pitch in degrees, and the clockwise / counter-clockwise markings indicate the rotation

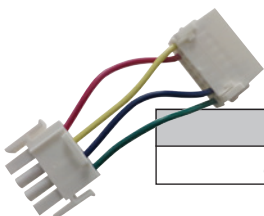
RUBBER FAN HUB CAP



Rubber fan hub cap prevents vertical mounted condenser fan from seizing to motor shaft.

PART
P251-0061

4 - 16 PIN HARNESS ADAPTER



PART
87947075F

TECINSPECT



- 16-Pin and 4-Pin Connector for diagnostics on Genteq Variable Speed Models
- Works with ECM models: 2.0, 2.3, 2.5, 3.0 and Eon
- Comes with ECM Service Guide

PART
GE-A447

ECM MOTOR SIMULATOR KIT

Kit used for HK42FZ003/012/022 Controls ONLY



PART
KBSD0301FMS

Specifications are subject to change without notice or obligation.

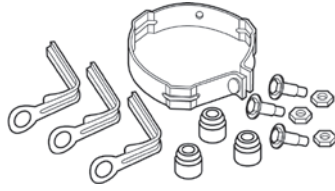


Universal HVAC/R
Parts and Supplies

PARTS & ACCESSORIES

TOTALINE® BRACKET KITS MOTOR MOUNT KIT

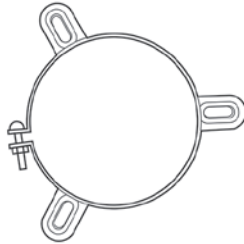
Stamped steel motor mounting kits for 42 and 48 frame direct drive blower motors. Kits contain belly band, mounting arms, rubber isolation grommets and 1/4-20 sleeved bolts and nuts for attaching mount to fan housing.



PART	MOTOR DIAMETER	BOLT CIRCLE
P251-0074	5.3"	11.6"
P251-0075	5"	11"

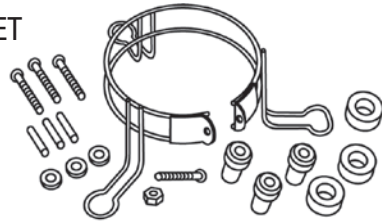
ADJUSTABLE MOTOR MOUNT KIT

Use when replacing motors which originally had welded on mounting ears. Mounting ears have 5/16" slots and 3/4" knockouts which are adaptable to a wide range of mounting dimensions.



PART
P251-0015

TORSION FLEX BRACKET

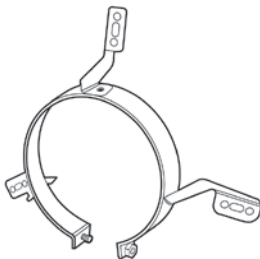


PART	MOTOR FRAME	BOLT CIRCLE	EMERSON NO.
P251-0010	42	9 9/32"	16
P251-0011	48	10"	17

TORSION FLEX BRACKET

An economical alternative to conventional mounts that require rubber grommets.

- Fits 9" or 10" blowers
- Maximum motor weight is 16 lbs
- Used with 5 1/2" diameter direct drive blower motors



PART
P251-0073

DIRECT DRIVE MOTOR MOUNTING BRACKETS

FLEXIBLE MOUNT "BELLY" BAND ADAPTER



Adapts either to a 5" diameter motor (42-frame), or a 5 5/8" (48-frame) to mount on 9" and 10" blowers.

PART	FITS
05407401	5" Motor
05407402	5 5/8" Motor

MOTOR MOUNTING BRACKET

Supported from the housing venturi, mounting brackets are adjusted for motors 31/2" to 61/8" in length and accommodates a 48-frame motor. Adjusts to various wheel widths with the necessary hardware furnished.



PART	BLOWER SIZE
38251401	9"
38251501	10"
02612601	11"
02612601	12"

UNIVERSAL MOTOR MOUNTING BRACKETS

Lau's universal motor mounting brackets accommodate 10" and 12" blowers (includes mounting hardware).



PART 42-FRAME MOTORS (5" DIA.)	48-FRAME MOTORS (5 5/8" DIA.)	BLOWER SIZE
02869101	02869201	10"
N/A	05409101	12"

TOTALINE 4-LEG FLEXIBLE MOUNT BRACKET KIT

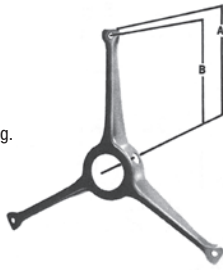
PART	DESCRIPTION
P251-0039	5.6" Torsion Mount



BEARING BRACKETS FOR BELT DRIVE BLOWERS

NOTE - 18" version has 2 belt holes on each bracket leg.

One-Piece Bracket
(sold individually)



PART	BELT DRIVE BLOWER (1)	A	B	OD*
00896004	18"	9 5/16"	8 13/16"	2 1/2"
01443102	15"	7 13/16"	7 7/16"	2 1/2"
01573001	12"	6 5/16"	6"	2 1/2"

*OD as measured over rubber cushion.

KNOCK DOWN BRACKET KIT

For easier installation. Accommodates bearings that have 1 13/16" O.D.
(Fits up to 18 1/2" bolt circle.)

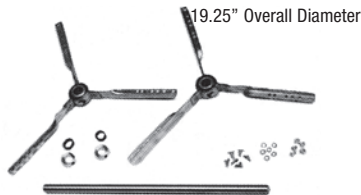
NOTE - When combined with a pair of 3/4" Lau bearings, can also replace obsolete flange bearing #38208201.



PART (PAIR)	O.D. OF RUBBER CUSHION
38269901	1 13/16"

SLEEVE BEARING BRACKET KIT

- Ideal for replacing obsolete pillow blocks and streamlined bearings
- Can also be used in some evaporative cooler applications
- Specially designed to fit most blowers from 9" to 16" sizes
- Sturdy, compact, 10-gauge steel bearing and bracket – completely assembled and ready to mount
- Sintered bronze ball assembly securely held in a spherical rubber isolating liner to assure maximum vibration absorption, quiet operation, constant self-alignment and long life
- Packaged in pairs with shaft and hardware group



PART	SHAFT DIAMETER	MAXIMUM HP	SHAFT LENGTH
02917501*	3/4"	3/4 HP	20"
02917601	1"	1 HP	25"

*02917501 also replaces obsolete Part Number 38208201.

BEARINGS

LAU-PAK™ - SLEEVE SEALED TYPE BEARINGS WITH INSULATOR

Self-aligning, factory-packed with a supply of plastic petroleum assuring proper lubrication during the long life of the bearing. Self-aligning, porous bronze sleeve pressed in housing.



NOTE - Temperature Range for Sleeve Bearings: 40° - 135°.

PART (PAIR)*	SHAFT DIAMETER	O.D.*
38244301	5/8"	1 13/16"
38244302	3/4"	1 13/16"
38244303	1"	2 1/2"

*O.D. as measured over rubber cushion.

SEALED SLEEVE BEARINGS (REPLACES BRUNDAGE)

Self-aligning, factory-packed with a supply of plastic petroleum assuring proper lubrication during life of bearing.



NOTE - Temperature Range for Sleeve Bearings: 40° - 135°.

PART (PAIR)*	SHAFT DIAMETER	O.D.*
38269401	3/4"	2 1/16"
38269501	1"	2 1/16"

*O.D. as measured over rubber cushion.

+ Bearings shipped in pairs

Specifications are subject to change without notice or obligation.



Universal HVAC/R
Parts and Supplies

PARTS & ACCESSORIES

BEARINGS

SEALED TYPE BALL BEARINGS WITH INSULATOR

For use when operating conditions exceed the limits of sleeve bearings or where repetitive failures occur. These bearings are pre-lubricated at the factory and require no further lubrication or attention. They are equipped with seals for positive grease retention and protection against contaminants.



NOTE - Temperature Range for Sleeve Bearings: 40° - 135°.

PART NO. (PAIR)*	TEMP. RANGE °F	SHAFT DIAMETER W/ INTERLOCKING THRUST COLLAR	O.D.*
38258801	-20° +180°	3/4"	1 13/16"
38259001	-20° +180°	1"	2 17/32"
38256201	-20° +180°	1 3/16"	2 17/32"

*O.D. as measured over rubber cushion.

LAU OIL TYPE - SLEEVE BEARINGS WITH INSULATOR

Self-aligning, self-oiling, with bronze bushing held in housing under light, uniform spring presser, providing uniform distribution of lubricant through pores of bushing. Drive type oil cup.



NOTE - Shipped dry. Lubricate at time of installation with SAE 20 or 30 weight oil.

PART (PAIR)*	SHAFT DIAMETER	O.D.*
38240401	5/8"	1 13/16"
38244201	3/4"	1 13/16"
38244202	1"	2 1/2"

*O.D. as measured over rubber cushion.

OIL SLEEVE BEARINGS (REPLACES BRUNDAGE)

Self-oiling with sintered bronze bushings and drive type oil cups.



PART (PAIR)*	SHAFT DIAMETER	O.D.*
38269601	3/4"	2 1/16"
38269701	1"	2 1/16"

*O.D. as measured over rubber cushion.

OIL TYPE - SLEEVE BEARINGS WITH INSULATOR

Self-aligning, self-oiling with sintered bronze bushings and drive type oil cups.



NOTE - Re-lubricate with SAE 20 or 30 weight oil. (Due to wicking, may need to oil at time of installation.)

PART (PAIR)*	SHAFT DIAMETER	O.D.*
38245001	3/4"	1 27/32"
38244901	1"	1 27/32"
38209401	1" Heavy Duty	2 1/2"

*O.D. as measured over rubber cushion.

TOTALINE® BRONZE BEARING

- Porous bronze sleeve
- Oil cup



PART NO.	OUTSIDE DIAMETER	BORE DIAMETER	WIDTH
P461-2301*	1 11/16"	3/4"	1 1/4"

*Requires Isolator P461-2001.

+ Bearings shipped in pairs

BEARINGS

CARTRIDGE TYPE SLEEVE BEARINGS



Types of "Spider" Brackets



Cartridge Bearing with Journal

This cartridge type bearing has been designed to give you fast, easy interchangeability. It will fit any "spider type" bracket used on 9", 10", and 12" blowers.

Sintered bronze bushing pressed into steel bearing caps and cushioned in heavy neoprene conductive rubber. Factory-packed with lubricant for many years of quiet, trouble-free service. The cartridge bearing with a journal may permit use of old shaft.

PART (PAIR)*	SHAFT DIAMETER	O.D.*
38209101 Mark IV	3/4" w/ thrust & spacer	1 13/16"
38227201 Mark III	3/4" w/ journal	1 13/16"
38209001	1"	1 13/16"

*O.D. as measured over rubber cushion.

BALL BEARING CARTRIDGE UNITS



- Light duty series
- Molded rubber outer liner
- Eccentric self-locking collar
- Permanently lubricated
- Quiet operation
- Width: 1"

PART	OUTSIDE DIAMETER	BORE DIAMETER
P461-2202	2.5"	1/2"
P461-2502	2.5"	5/8"
P461-2302	1.8"	3/4"
P461-2304	2.5"	3/4"
P461-2201	1.7"	1/2"
P461-2102	2.5"	1"
P461-2103*	2.5"	1"
P461-2901	2.5"	1 3/16"

*Width 3/4 inch.

BALL BEARING CARTRIDGE UNITS



- Porous bronze sleeve
- Sealed type
- Self-aligning



PART	OUTSIDE DIAMETER	BORE DIAMETER	WIDTH
P461-2303	1 13/16"	3/4"	1"
P461-2101	2 1/2"	1"	1 3/8"

PILLOW BLOCK BALL BEARINGS

- Durable cast-iron construction
- Pre-lubricated bearings
- Re-greasable



NOTE - Temperature Range: -30 to 200°F.

PART (PAIR)*	SHAFT DIAMETER	SPREAD MIN. MAX.	HOLE SIZE	O.D.*
38256701	3/4"	3 5/8" 3 7/8"	9/16" x 13/32"	3 5/16"
38256801	1"	3 7/8" 4 1/8"	9/16" x 13/32"	1 7/16"
38256901	1 3/16"	4 1/2" 4 3/4"	3/4" x 9/16"	1 11/16"
38257001	1 7/16"	4 3/5" 5"	3/4" x 9/16"	1 7/8"

*O.D. as measured over rubber cushion.

TECHNICAL TIP:

Pillow block ball bearings are pre-lubricated at the factory. Normal operating temperature is from -30°F to 200°F. Under normal operating conditions (clean environment and RPM under 1500) re-lubrication is recommended at 6-12 month intervals. When re-greasing, care should be taken not to over grease as seal blow out and/or bearing burnout can occur.

Specifications are subject to change without notice or obligation.



Universal HVAC/R
Parts and Supplies

PARTS & ACCESSORIES

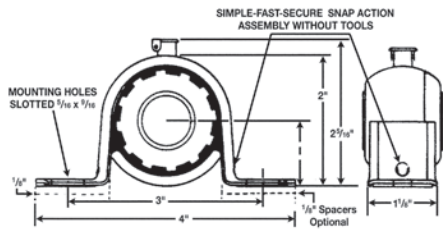
BEARINGS

PILLOW BLOCK SLEEVE BEARINGS



Heavy neoprene cushioned, re-oilable porous bronze bushing in a pressed steel ball unit held firmly in a housing of two-piece interlocking steel.

This high quality self-aligning, static-free, pillow block will assure quiet operation and many years of trouble-free performance. Two 1/8" rubber spacers provided for use, if needed.



For use on horizontal shaft applications only

PART (PAIR)*	SHAFT DIAMETER
38220401	5/8"
38208601	3/4"
38208701	1"
38209301*	1" Heavy Duty

*Dimensions for the heavy duty pillow block are: mounting holes on center 3 1/2"; base to shaft center 1 3/16"; width 1 1/2".

PILLOW BLOCK LIGHT DUTY SERIES



- Permanently lubricated
- Rubber cushion interliner
- Eccentric locking collar
- Two-piece pressed steel housing
- Self-aligning



PART	BASE TO SHAFT CENTER	MOUNTING CENTER DISTANCE	BORE DIAMETER	TYPE
P461-2203	9/16"	2"	1/2"	SLV
P461-2503	.70"	3"	5/8"	SLV
P461-2501	1"	3"	5/8"	BALL
P461-2306	1 1/8"	3 3/8"	3/4"	BALL
P461-2104	1 5/16"	3 3/4"	1"	BALL
P461-2904	1 5/16"	3 3/4"	1 3/16"	BALL

PILLOW BLOCK BRONZE BEARING



- Porous bronze sleeve
- Self-aligning
- Spherical bearing cartridge
- Quiet operation
- Oil cup for re-lubrication



PART	BASE TO SHAFT CENTER	MOUNTING CENTER DISTANCE	BORE DIAMETER
P461-2504	1"	3 1/8"	5/8"
P461-2305*	1"	3 1/8"	3/4"
P461-2106	1"	4 1/16"	1"
P461-2107	1 3/8"	3 5/16"	1"

FLANGE BALL BEARINGS

Permanently sealed and lubricated, two-bolt flange unit, rubber-mounted oil-resistant, rubber isolator. Stamped steel housing.



PART (PAIR)*	SHAFT DIAMETER	SPREAD	HOLE SIZE	O.D.*
38256501	3/4"	3 5/8"	7/16"	2 41/64"
38256502	1"	3 5/8"	7/16"	2 41/64"
38256601	1 3/16"	4 5/8"	1/2"	3 1/4"

*O.D. as measured over rubber cushion.

THRUST SLEEVE & SPACER KIT

Developed to eliminate end-play on sleeve bearing blowers. Replaces old style spring design. Plastic sleeve with assortment of spacers make adjustment easy on any size blower.

Easy-to-follow instructions included. Available in 3/4" shaft size only.



PART (PAIR)*	SHAFT DIAMETER
38220301	3/4"

THRUST COLLAR KIT

Sheet metal thrust collar in 3/4", 5/8" and 1" size. All with hollow head (Allen) setscrews.

Kit consists of one pair packaged with thrust washers. Order by part number.



PART (PAIR)*	SHAFT DIAMETER
38243101	5/8"
38220601	3/4"
38220701	1"

THRUST SPACER KIT

Packaged 12 per bag.



PART (PAIR)*	SHAFT DIAMETER
38249101	5/8"
38249102	3/4"
38249103	1"

MOTOR MOUNTING HARDWARE KIT

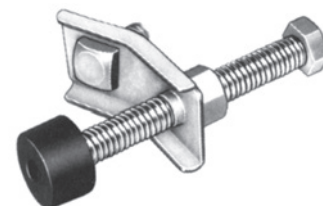


Motor attachment and adjustment hardware for 9", 10", 12" and 15" blowers.

PART
38252101

MOTOR ADJUSTMENT KIT

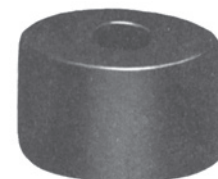
Tailpiece assembly for proper belt tension adjustment.



PART
38252301

MOTOR ADJUSTMENT GROMMETS

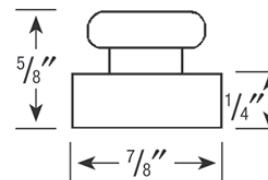
Resilient rubber tips for use with tailpiece assembly to reduce motor vibration and noise.



PART (PACK OF 6)
38252501

VIBRO-PADS 5/16" HOLE

Resilient rubber pads snap easily into place. Reduces vibration, wear and noise on blowers, fans, motors, etc. (packaged 12 per bag).



PART (DOZ.)
38220901



+ Shipped in pairs



Universal HVAC/R Parts and Supplies

PARTS & ACCESSORIES

SHAFTS

SHAFTS

When a bearing fails, the shaft is inevitably scored. If not replaced, it will destroy the new bearings. Premium shafting is ground and polished 1018 cold-rolled steel. Excess shaft may be cut off. (Keyways and/or flats are to be added as required in the field.)

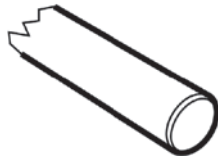


NOTE - When replacing bearings, be sure to replace the shaft.

PART	DIAMETER	LENGTH	SHAFT
38220501	5/8"	20"	Solid
38209601	3/4"	20"	Solid
38269301	3/4"	35"	Solid
38209501	1"	25"	Solid
38249201	1"	35"	Solid

TOTALINE® BLOWER SHAFTS

- Solid cold-rolled steel
- Ground and polished shaft
- Universal sizes
- Can be cut to proper length



NOTE - When replacing bearings, be sure to replace the shaft.

PART	DIAMETER	LENGTH	SHAFT
P461-4520	5/8"	20"	Solid
P461-4320	3/4"	20"	Solid
P461-4335	3/4"	35"	Solid
P461-4125	1"	25"	Solid
P461-4135	1"	35"	Solid

TOTALINE® STEEL SHAFT BUSHINGS



PART	INSIDE DIAMETER	OUTSIDE DIAMETER	LENGTH
P251-0062	5/16"	3/8"	1 1/64"
P251-0063	5/16"	1/2"	1 1/8"
P251-0064	3/8"	1/2"	1 1/8"
P251-0076	1/2"	5/8"	1 1/8"
P251-0065	1/2"	3/4"	1 1/4"
P251-0066	5/8"	3/4"	1 1/4"
P251-0067	5/8"	1"	1 1/4"
P251-0068	3/4"	1"	1 1/4"
P251-0069	1"	1 3/16"	1 1/4"

TOTALINE®

ADJUSTABLE MOTOR PULLEYS



- Quality cast iron key way
- Designed for long belt life
- Corrosion resistant



PART	PULLEY SIZE	SHAFT SIZE	PITCH DIAMETER
P461-3201	3"	1/2"	1.9 - 2.9"
P461-3503	3"	5/8"	1.9 - 2.9"
P461-3301	3"	3/4"	1.9 - 2.9"
P461-3202	4"	1/2"	2.4 - 3.4"
P461-3505	4"	5/8"	2.4 - 3.4"
P461-3302	4"	3/4"	2.4 - 3.4"
P461-3710	4"	7/8"	2.4 - 3.4"
P461-3203	4 1/4"	1/2"	2.8 - 3.8"
P461-3507	4 1/4"	5/8"	2.8 - 3.8"
P461-3303	4 1/4"	3/4"	2.8 - 3.8"
P461-3708	4 1/4"	7/8"	2.8 - 3.8"
P461-3204	5"	1/2"	3.4 - 4.4"
P461-3504	5"	5/8"	3.4 - 4.4"
P461-3304	5"	3/4"	3.4 - 4.4"
P461-3706	5"	7/8"	3.4 - 4.4"



Universal HVAC/R
Parts and Supplies

Solving challenging HVAC/R problems is your job.
Helping you get the parts, supplies and equipment
you need is ours. This is the Totaline commitment;
we don't take it lightly.



**TRUST TOTALINE
ON YOUR TRUCK**



Replacement Components • © Carrier Corporation 2016
Printed in the U.S.A. • Edition Date: Rev. D 01/2017 • Lit. No.: 570-648

For promotional information visit www.totaline.com
and for technical information visit www.hvacpartners.com



**Universal HVAC/R
Parts and Supplies**