

## OPERATING INSTRUCTIONS - 728C

**IMPORTANT: READ THESE INSTRUCTIONS AND ALL WARNINGS PRIOR TO USING THIS EQUIPMENT. UNDERSTAND ALL OPERATING PROCEDURES, SAFETY WARNINGS AND MAINTENANCE REQUIREMENTS. FAILURE TO DO SO COULD CAUSE AN ACCIDENT RESULTING IN SERIOUS OR FATAL INJURY AND/OR PERSONAL PROPERTY DAMAGE.**

### WARNING

The use of portable automotive lifting devices is subject to certain hazards that cannot be prevented by mechanical means, but only by exercise of intelligence, care, and common sense. It is therefore essential to have personnel involved in the use and operation of equipment who are careful, competent, trained, and qualified in the safe operation of this equipment and its proper use when servicing motor vehicles and their components. Examples of hazards are dropping, tipping, or slipping of motor vehicles or their components caused primarily by improperly securing loads, overloading, off-centered loads, use on other than hard level surfaces, and using equipment for a purpose for which it was not designed.

The owner and / or operator shall study and understand the product and safety instructions before operating this equipment. Safety information shall be emphasized and understood. If the operator is not fluent in English, the product and safety instructions shall be read to and discussed with the operator in the operator's native language by the purchaser / owner or his designee, making sure that the operator comprehends their contents. **A copy of these instructions / warnings shall be retained for future reference.**

### INSPECTION

Visual inspection shall be made before each use of this equipment, checking for abnormal conditions, such as cracked welds, leaks, damaged, loose or missing parts. This equipment shall be removed immediately from service if it is believed to have been subjected to an abnormal or shock load, the equipment shall be inspected by a qualified repair facility. Owners and / or operators should be aware that repair of this equipment may require specialized knowledge and facilities. It is recommended that this equipment be inspected annually by a qualified repair facility. Defective parts, decals, safety labels or signs should be replaced with Strongarm specified parts.

### WARNING

- Prior to lifting a vehicle, refer to vehicle manufacturer's recommended lifting points.
- Inspect the jack prior to each use, remove from service if it is leaking, damaged, excessively worn, or has been altered in any way.
- This jack was designed for lifting purposes only. Do not attempt to work on the vehicle until appropriately rated jacks stands are supporting the load.
- Do not exceed rated capacity.
- Do not move or dolly the vehicle while on jack.
- Chock vehicle to prevent movement.
- Center load on saddle, off center loads may cause jack failure and / or loss of load.
- Use jack on a hard level surface.
- Only attachments and / or adapters supplied by the manufacturer shall be used.
- No alterations shall be made to this product.
- Failure to heed these markings may result in severe or fatal personal injury and / or property damage.

## OPERATING INSTRUCTIONS - 728C

### ASSEMBLY

- 1) Connect two piece handle assembly, ensure that internal and external rods mate properly. Use screw provided to secure outer handle tube and cotter pin to secure external handle locator rod.
- 2) Loosen handle retaining bolt from yoke assembly, insert handle assembly and handle locator rod into yoke assembly. NOTE: Rotate release knob at top of handle to ensure that the internal handle rod is engaged within the yoke assembly fully. Tighten handle retaining bolt on yoke assembly.
- 3) Extract air hose assembly from initial storage position and attach to top of handle.
- 4) Add a few drops of air tool lubricant into air valve assembly.

### AIR PURGE

- 1) Open release valve by rotating release knob at top of handle counterclockwise two turns.
- 2) Remove oil filler plug on side of hydraulic unit, ensure oil level is just below filler plug hole, reinstall plug.
- 3) Depress the air valve for 30 seconds.
- 4) Close release valve by rotating release knob at top of handle clockwise until firm, Do Not Overtighten.
- 5) Depress air valve until ram is fully extended.
- 6) Repeat if necessary.

### LIFTING

- 1) Secure the vehicle by chocking wheels and apply parking brake.
- 2) Refer to vehicle manufacturer's recommended lifting points and position jack accordingly, ensure that load is centered on saddle.
- 3) Rotate release valve clockwise until tight.
- 4) Lock handle position using one of the three position of the handle locator.
- 5) Attach air valve to suitable air source (90-175 psi). Depress air valve until saddle makes contact with recommended lifting point, (ensure lifting point is aligned properly and safely). Raise load to desired height.
- 6) **WARNING:** During lifting ensure load and jack are stable, if either appear to be unstable, stop lifting, lower load and reposition jack.
- 7) **IMMEDIATELY** after reaching desired height, secure load with appropriately rated safety stands. (refer to vehicle manufacturer's recommended positioning)

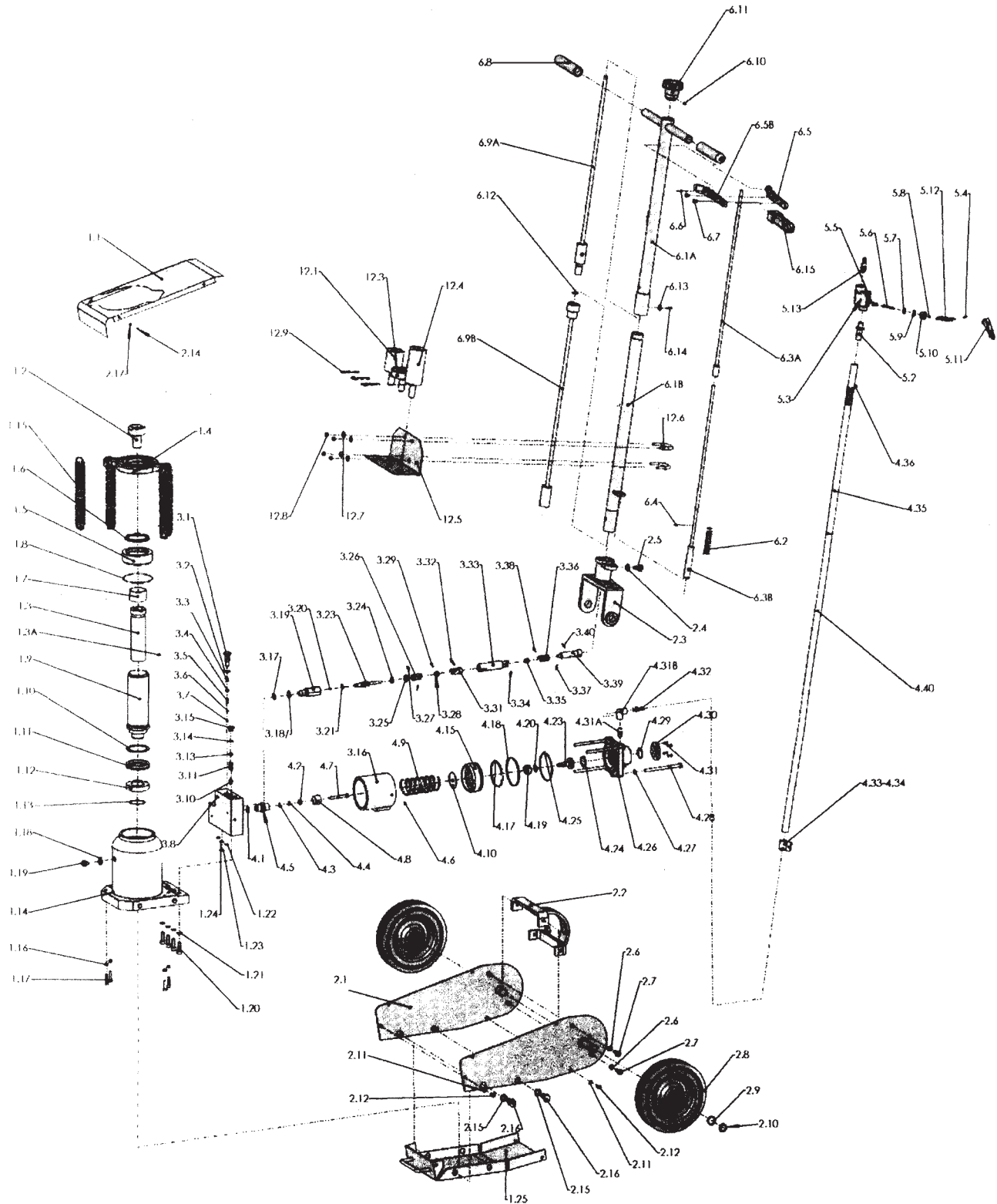
### LOWERING

- 1) Raise load high enough to remove safety stands.
- 2) **WARNING:** Ensure load does not shift or become unstable when lifting. If load is unstable, slowly lower load back on to the safety stands. Correct instability and try again.
- 3) Carefully remove safety stands.
- 4) Lower load slowly.

### MAINTENANCE

- 1) Depending upon usage, periodically add a few drops of air tool oil to air inlet.
- 2) Store unit in fully retracted position to avoid rusting of lift piston.
- 3) Grease the extension screw threads with a general purpose grease
- 4) Keep saddle area clean and free of grease or dirt.

## 20 Ton Air/Hydraulic Truck Jack - Heavy Duty



## 20 Ton Air/Hydraulic Truck Jack - Heavy Duty PARTS LIST

Item No.	Description	Item No.	Description	Item No.	Description
1.1	cover	3.8	cylinder base	4.26	air pump body
1.2	saddle	3.10	valve	4.27	washer
1.3	extension screw	3.11	spring	4.28	bolt
1.3A	spring pin	3.13	screw	4.29	o-ring
1.4	spring support	3.14	o-ring	4.30	back cover
1.5	screw bushing	3.15	screw	4.31	screw
1.6	Y-shape seal ring	3.16	pump body	4.31A	screw tube
1.7	head nut	3.17	washer	4.31B	elbow joint
1.8	o-ring	3.18	o-ring	4.32	union
1.9	piston rod	3.19	release valve body	4.33	spiral clamp ring
1.10	stop ring	3.20	steel ball	4.34	screw
1.11	U-shape seal ring	3.21	o-ring	4.35	rubber hose
1.12	piston head	3.23	release valve	4.36	spring
1.13	elastic stop ring	3.24	washer	5.0	air valve assembly
1.14	cylinder base	3.25	stop ring	5.2	filter nozzle
1.15	spring	3.26	fork axle with hole	5.3	case
1.16	nut	3.27	steel wire	5.4	pin
1.17	screw	3.28	connecting block	5.5	spring
1.18	o-ring	3.29	spring pin	5.6	piston rod
1.19	screw	3.30	spring pin	5.7	seal ring
1.20	screw	3.31	fork axle	5.8	o-ring
1.21	washer	3.32	pin	5.9	o-ring
1.22	o-ring	3.33	joint	5.10	throttle
1.23	o-ring	3.34	steel wire	5.11	handle cover
1.24	o-ring	3.35	connecting block	5.12	locking spring
1.25	chassis base	3.36	fork axle with hole	5.13	union
2.1	side plate	3.37	spring pin	6.1A B	outside tube(2 parts)
2.2	angle bracket	3.38	spring pin	6.2	spring
2.3	handle fork	3.39	connecting axle	6.3A B	adjustable rod
2.4	washer	3.40	spring pin	6.4	split pin
2.5	fastening screw	4.1	packing	6.5	lock lever
2.6	washer	4.2	plunger cover	6.6	spring pin
2.7	bolt	4.3	o-ring	6.7	hex-headed screw
2.8	wheel	4.4	seal ring	6.8	handle
2.9	washer	4.5	plug bushing	6.9A B	control rod(2 parts)
2.10	track ring	4.6	o-ring	6.10	spring pin
2.11	washer	4.7	plug	6.11	knob
2.12	screw	4.8	cap	6.12	retaining ring
2.14	screw	4.9	spring	6.13	spring washer
2.15	washer	4.10	spring holder	6.14	bolt
2.16	bolt	4.15	piston	6.15	handle cap
2.17	washer	4.17	o-ring	12.1	adaptor-A
3.1	screw	4.18	seal ring	12.3	adaptor-C
3.2	washer	4.19	seal throttle	12.4	adaptor-D
3.3	spring	4.20	washer	12.5	adaptor holder
3.4	steel ball	4.23	throttle rod	12.6	U-bolt
3.5	valve core	4.24	o-ring	12.7	spring washer
3.6	spring	4.25	o-ring	12.8	nut
3.7	steel ball			12.9	hitch pin