

PROD. NO.: 030470

MOD. NO.: 727



22 Ton Air/Hydraulic Truck Axle Jack Owner's Manual



WARNING:

IMPORTANT: READ THESE INSTRUCTIONS AND ALL WARNINGS PRIOR TO USING THIS EQUIPMENT. UNDERSTAND ALL OPERATING PROCEDURES, SAFETY WARNINGS AND MAINTENANCE REQUIREMENTS. FAILURE TO DO SO COULD CAUSE AN ACCIDENT RESULTING IN SERIOUS OR FATAL INJURY AND/OR PERSONAL PROPERTY DAMAGE.



WARNING!

The use of portable automotive lifting devices is subject to certain hazards that cannot be prevented by mechanical means, but only by exercise of intelligence, care, and common sense. It is therefore essential to have personnel involved in the use and operation of equipment who are careful, competent, trained, and qualified in the safe operation of this equipment and its proper use when servicing motor vehicles and their components. Examples of hazards are dropping, tipping, or slipping of motor vehicles or their components caused primarily by improperly securing loads, overloading, off-centered loads, use on other than hard level surfaces, and using equipment for a purpose for which it was not designed.

The owner and / or operator shall study and understand the product and safety instructions before operating this equipment. Safety information shall be emphasized and understood. If the operator is not fluent in English, the product and safety instructions shall be read to and discussed with the operator in the operator's native language by the purchaser / owner or his designee, making sure that the operator comprehends their contents. A copy of these instructions / warnings shall be retained for future reference.



INSPECTION

Visual inspection shall be made before each use of this equipment, checking for abnormal conditions, such as cracked welds, leaks, damaged, loose or missing parts. This equipment shall be removed immediately from service if it is believed to have been subjected to an abnormal or shock load, the equipment shall be inspected by a qualified repair facility. Owners and / or operators should be aware that repair of this equipment may require specialized knowledge and facilities. It is recommended that this equipment be inspected annually by a qualified repair facility. Defective parts, decals, safety labels or signs should be replaced with Strongarm specified parts.



WARNING!

- Prior to lifting a vehicle, refer to vehicle manufacturer's recommended lifting points.
- Inspect the jack prior to each use, remove from service if it is leaking, damaged, excessively worn, or has been altered in any way.
- This jack was designed for lifting purposes only. Do not attempt to work on the vehicle until appropriately rated jacks stands are supporting the load.
- Do not exceed rated capacity.
- Do not move or dolly the vehicle while on jack.
- Chock vehicle to prevent movement.
- Center load on saddle, off center loads may cause jack failure and / or loss of load.
- Use jack on a hard level surface.
- Only attachments and / or adapters supplied by the manufacturer shall be used.
- No alterations shall be made to this product.
- Failure to heed these markings may result in severe or fatal personal injury and / or property damage.



SET UP

ASSEMBLY

1. Connect two piece handle assembly, ensure that internal and external rods mate properly. Use screw provided to secure outer handle tube and cotter pin to secure external handle locator rod.
2. Loosen handle retaining bolt from yoke assembly, insert handle assembly and handle locator rod into yoke assembly. NOTE: Rotate release knob at top of handle to ensure that the internal handle rod is engaged within the yoke assembly fully. Tighten handle retaining bolt on yoke assembly.
3. Extract air hose assembly from initial storage position and attach to top of handle.
4. Add a few drops of air tool lubricant into air valve assembly.

AIR PURGE

1. Open release valve by rotating release knob at top of handle counterclockwise two turns.
2. Remove oil filler plug on side of hydraulic unit, ensure oil level is just below filler plug hole, reinstall plug.
3. Depress the air valve for 30 seconds.
4. Close release valve by rotating release knob at top of handle clockwise until firm. Do Not Overtighten.
5. Depress air valve until ram is fully extended.
6. Repeat if necessary.

LIFTING

1. Secure the vehicle by chocking wheels and apply parking brake.
2. Refer to vehicle manufacturer's recommended lifting points and position jack accordingly, ensure that load is centered on saddle.
3. Rotate release valve clockwise until tight.
4. Lock handle position using one of the three position of the handle locator.
5. Attach air valve to suitable air source (90-175 psi). Depress air valve until saddle makes contact with recommended lifting point, (ensure lifting point is aligned properly and safely). Raise load to desired height.
6. **WARNING:** During lifting ensure load and jack are stable, if either appear to be unstable, stop lifting, lower load and reposition jack.
7. **IMMEDIATELY** after reaching desired height, secure load with appropriately rated safety stands. (refer to vehicle manufacturer's recommended positioning)

LOWERING

1. Raise load high enough to remove safety stands.
2. **WARNING:** Ensure load does not shift or become unstable when lifting. If load is unstable, slowly lower load back on to the safety stands. Correct instability and try again.
3. Carefully remove safety stands.
4. Lower load slowly.

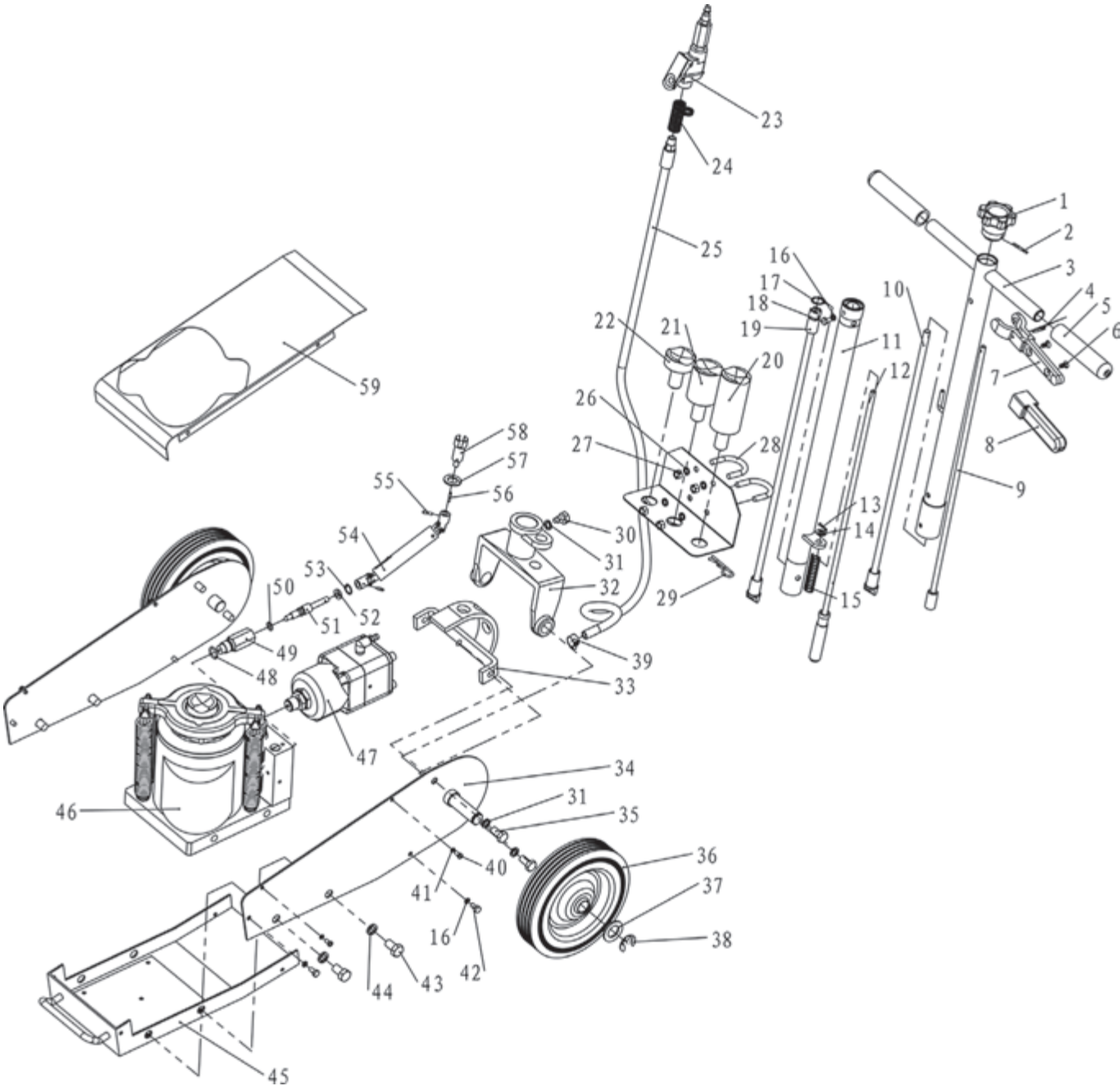


MAINTENANCE

1. Depending upon usage, periodically add a few drops of air tool oil to air inlet.
2. Store unit in fully retracted position to avoid rusting of lift piston.
3. Grease the extension screw threads with a general purpose grease
4. Keep saddle area clean and free of grease or dirt.

727 - 22 Ton Air/Hydraulic Truck Axle Jack

PROD. NO.: 030470 • MOD. NO.: 727

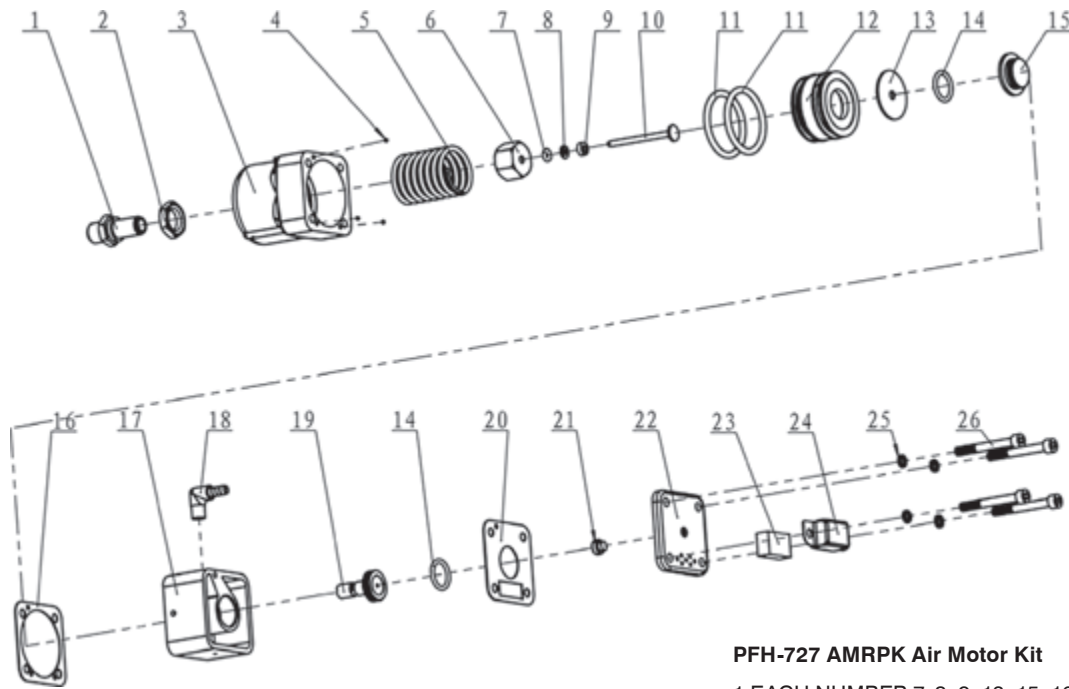


PARTS LIST

REF	PART NUMBER	DESCRIPTION	REQ	REF	PART NUMBER	DESCRIPTION	REQ
1	PFH-727CP01	KNOB	1	31	PFH-727CP31	SPRING WASHER 10	5
2	PFH-727CP02	SPRING PIN	1	32	PFH-727CP32	HANDLE FORK	1
3	PFH-727CP03	HANDLE UPPER	1	33	PFH-727CP33	HANDLE FORK BRK	1
4	PFH-727CP04	SPRING PIN	1	34	PFH-727CP34	FRAME	2
5	PFH-727CP05	HANDLE CAP	2	35	PFH-727CP35	BOLT M10X20	4
6	PFH-727CP06	SCREW	2	36	PFH-727CP36	WHEEL	2
7	PFH-727CP07	LOCK LEVER	1	37	PFH-727CP37	WASHER	2
8	PFH-727CP08	HANDLE CAP	1	38	PFH-727CP38	SNAP RING	2
9	PFH-727CP09	STOPPER UPPER	1	39	PFH-727CP39	HOSE BAND	1
10	PFH-727CP10	ROD UPPER	1	40	PFH-727CP40	SCREW	4
11	PFH-727CP11	HANDLE LOWER	1	41	PFH-727CP41	SPRING WASHER 5	4
12	PFH-727CP12	STOPPER LOWER	1	42	PFH-727CP42	BOLT M6X12	4
13	PFH-727CP13	SPLIT PIN	1	43	PFH-727CP43	BOLT M12X20	4
14	PFH-727CP14	WASHER	1	44	PFH-727CP44	SPRING WASHER 12	4
15	PFH-727CP15	SPRING	1	45	PFH-727CP45	LOWER COVER	1
16	PFH-727CP16	SPRING WASHER 6	5	46	PFH-727CP46	POWER UNIT	1
17	PFH-727CP17	RETANING RING 18	1	47	PFH-727CP47	AIR PUMPER ASSEMBLY	1
18	PFH-727CP18	BOLT M6X10	1	48	PFH-727CP48	O-RING	1
19	PFH-727CP19	ROD LOWER	1	49	PFH-727CP49	GUIDE	1
20	PFH-727CP20	ADAPTOR D	1	50	PFH-727CP50	O-RING	1
21	PFH-727CP21	ADAPTOR C	1	51	PFH-727CP51	VALVE	1
22	PFH-727CP22	ADAPTOR B	1	52	PFH-727CP52	WASHER	1
23	PFH-727CP23	AIR VALVE ASSEMBLY	1	53	PFH-727CP53	RETANING RING	1
24	PFH-727CP24	SPRING	1	54	PFH-727CP54	CONNECTING ASSEMBLY	1
25	PFH-727CP25	AIR HOSE	1	55	PFH-727CP55	SPRING PIN	2
26	PFH-727CP26	SPRING WASHER 8	4	56	PFH-727CP56	SPLIT PIN	1
27	PFH-727CP27	NUT M8	4	57	PFH-727CP57	WASHER	1
28	PFH-727CP28	U-BOLT	2	58	PFH-727CP58	CONNECTING ROD	1
29	PFH-727CP29	R-PIN	3	59	PFH-727CP59	UPPER COVER	1
30	PFH-727CP30	BOLT	1				

727 - 22 Ton Air/Hydraulic Truck Axle Jack

PROD. NO.: 030470 • MOD. NO.: 727



PFH-727 AMRPK Air Motor Kit

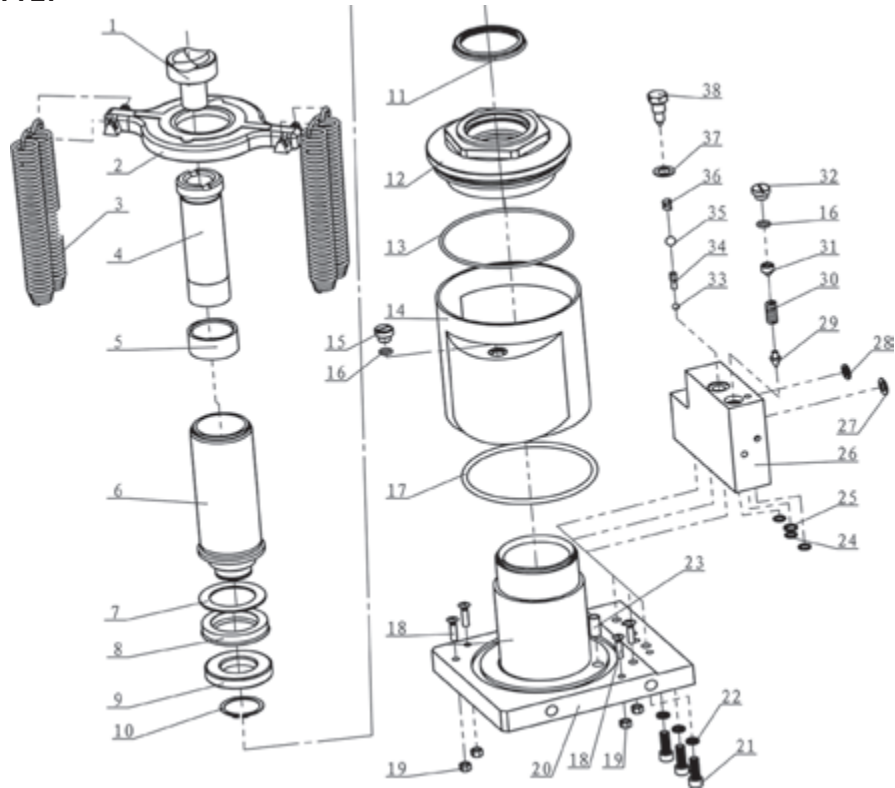
1 EACH NUMBER 7, 8, 9, 13, 15, 16, 20, 21, 23

2 EACH NUMBER 11 and 14

REF	PART NUMBER	DESCRIPTION	REQ	REF	PART NUMBER	DESCRIPTION	REQ
1	PFH-727AM01	PLUNGER COVER	1	14	PFH-727AM14	O-RING	2
2	PFH-727AM02	NUT	1	15	PFH-727AM15	RETAINER	1
3	PFH-727AM03	AIR PUMP BODY	1	16	PFH-727AM16	PACKING WASHER	1
4	PFH-727AM04	BALL	3	17	PFH-727AM17	MUFFLER COVER	1
5	PFH-727AM05	SPRING	1	18	PFH-727AM18	PIPE JOINT	1
6	PFH-727AM06	NUT	1	19	PFH-727AM19	VALVE ROD	1
7	PFH-727AM07	O-RING	1	20	PFH-727AM20	PACKING WASHER	1
8	PFH-727AM08	NL RETAINER	1	21	PFH-727AM21	RUBBER PAD	1
9	PFH-727AM09	PACKING GUIDE	1	22	PFH-727AM22	COVER	1
10	PFH-727AM10	PLUNGER	1	23	PFH-727AM23	FILTER ELEMENT	1
11	PFH-727AM11	O-RING	2	24	PFH-727AM24	FILTER COVER	1
12	PFH-727AM12	PISTON	1	25	PFH-727AM25	SPRING WASHER	4
13	PFH-727AM13	WASHER	1	26	PFH-727AM26	HEX-SOCKET SCREW	4

727 - 22 Ton Air/Hydraulic Truck Axle Jack

PROD. NO.: 030470 • MOD. NO.: 727



PFH-727PUHRK HYD REPAIR KIT

1 EACH NUMBER 7, 8, 10, 11, 13, 15, 17, 25, 27, 28, 29, 30, 31, 32, 33, 34, 35, 36, 37, 38

2 EACH NUMBER 16

3 EACH NUMBER 24

REF	PART NUMBER	DESCRIPTION	REQ	REF	PART NUMBER	DESCRIPTION	REQ
1	PFH-727PU01	ADAPTOR	1	20	PFH-727PU20	CYLINDER	1
2	PFH-727PU02	SPRING HANGER	1	21	PFH-727PU21	SCREW	3
3	PFH-727PU03	SPRING	4	22	PFH-727PU22	SPRING WASHER	3
4	PFH-727PU04	SCREW ROD	1	23	PFH-727PU23	OIL STRAINER	1
5	PFH-727PU05	BUSH	1	24	PFH-727PU24	O-RING	3
6	PFH-727PU06	PISTON ROD	1	25	PFH-727PU25	BACK-UP RING	1
7	PFH-727PU07	BACK-RING	1	26	PFH-727PU26	OIL BOX	1
8	PFH-727PU08	U-SEAL	1	27	PFH-727PU27	WASHER	1
9	PFH-727PU09	PISTON	1	28	PFH-727PU28	WASHER	1
10	PFH-727PU10	SNAP RING	1	29	PFH-727PU29	SAFETY VALVE	1
11	PFH-727PU11	DUST SEAL	1	30	PFH-727PU30	SPRING	1
12	PFH-727PU12	TANK NUT	1	31	PFH-727PU31	SCREW	1
13	PFH-727PU13	O-RING	1	32	PFH-727PU32	SCREW	1
14	PFH-727PU14	OIL TANK	1	33	PFH-727PU33	STEEL BALL	1
15	PFH-727PU15	BREATHING SCREW	1	34	PFH-727PU34	SEPARATOR	1
16	PFH-727PU16	PACKING	2	35	PFH-727PU35	STEEL BALL	1
17	PFH-727PU17	O-RING	1	36	PFH-727PU36	SPRING	1
18	PFH-727PU18	SCREW	4	37	PFH-727PU37	COPPER PACKING	1
19	PFH-727PU19	NUT	4	38	PFH-727PU38	BOLT	1