

Operation MANUAL

50 lb Grease Pump Kit - Heavy Duty

Prod. No. 350306
Mod. No. JAGP-25



Owner / User Responsibility

The owner and / or user must have a thorough understanding of the manufacturer's operating instructions and warnings before using this piece of equipment. Personnel involved in the use and operation of equipment shall be careful, competent, trained, and qualified in the safe operation of the equipment and its proper use. Warning information should be emphasized and understood. If the operator is not fluent in English, the manufacturer's instructions and warnings shall be read to and discussed with the operator in the operator's native language by the purchaser / owner, making sure that the operator comprehends its contents.

Owner and / or user must study and keep for future reference the manufacturer's instructions. Owner and / or user is responsible for keeping all warning labels and instruction manuals legible and intact.

Before Use

- 1) Verify that the product and the application are compatible.
- 2) Before using this product, read the owner's manual completely and familiarize yourself thoroughly with the product and the hazards associated with improper use.
- 3) Assemble cart or dolly.
- 4) Place grease pail on cart or dolly.
- 5) Place follower plate firmly on top of grease to ensure the follower will move with the grease.
- 6) Place drum cover over outer rim of pail and secure with screws provided.
- 7) Insert pump assembly through cart support arm, drum cover and follower plate and secure to cart support arm and drum cover with set screws.
- 8) Attach lubricant hose to pump, connection must be leakproof.
- 9) Attach "Z" swivel (if provided) to lubricant hose and control valve.
- 10) Attach air hose to pump assembly, connection must be leakproof.
- 11) NOTE: It is recommended that a filter / regulator / lubricator be installed in the air supply line to provide a clean, dry air source. It is also highly recommended that a SAFETY SHUT OFF BALL VALVE, be installed in the air supply line, close to the pump assembly in case of emergency.

Operation

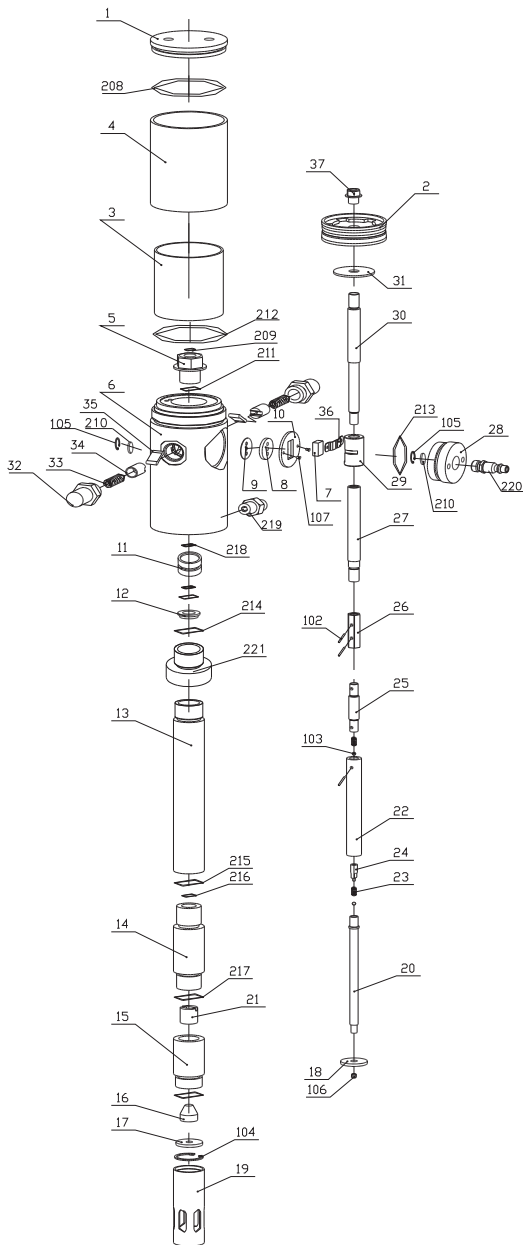
- 1) This pump will deliver grease at a ratio of 50:1, for example, 90 PSI air input will result in 4,500 PSI output of grease.
- 2) To begin grease delivery, ensure a secure connection to the grease fitting and squeeze the trigger of the control valve.
- 3) Releasing trigger of control valve will stop flow of grease and shut off pump.
- 4) When pump is not in use, shut off air supply to pump.

WARNING

These pumps can generate very high fluid pressure. Before each use, make sure safety devices are in place and operating properly. Do not alter or modify any part of the equipment, as this may result in fire, explosion, property damage or serious bodily injury, including injecting fluid through the skin or splashing in the eyes. To reduce the risk of serious bodily injury or property damage, never exceed the maximum air or fluid working pressure of the lowest rated system component. NEVER point the control valve at any person or towards skin.

Compression Ratio	50:1
Air Operating Pressure (bar - PSI)	5-8 / 70-115
Maximum Air Inlet Pressure (bar - PSI)	8 / 115
Air Consumption (cfm)	4.3 cfm @ 115 PSI
Maximum Free Flow Rate	800 g/min - 1.76 lbs/min
Tube Diameter (mm - inch)	480 / 19
Suction Tube Length (mm - inch)	740 / 29
Suitable for Drum Size (kgs - lbs)	20 - 30 / 44 - 66
Air Inlet Connection	1/4"
Oil Delivery Connection	1/4"
Noise Level (dB)	82

50:1 Air Operated Grease Pump



No.	Description	No.	Description
1	Air Motor Cover	31	Washer
2	Piston	32	Spring Shell
3	Air Motor Shell (inside)	33	Spring
4	Air Motor Shell (outside)	34	Spring Seat
5	Bracket	35	Trip Shoe Guide
6	Air Control Center	36	Slider Bracket
7	Slider	37	Nut
8	Gasket	102	Pin
9	Soft Gasket	103	Ball
10	Securing Washer	104	Circlip
11	Bracket	105	Small Circlip
12	Washer	106	Nut
13	Connecting Tube	107	Screw
14	Piston Shell	208	O-Ring
15	Valve Seat	209	O-Ring
16	Taper Washer	210	Silencer
17	Filter	211	O-Ring
18	Shovel Washer	212	O-Ring
19	Suction Tube	213	O-Ring
20	Shovel Rod	214	O-Ring
21	Valve	215	O-Ring
22	Piston	216	O-Ring
23	Spring	217	O-Ring
24	Spring Seat	218	O-Ring
25	Connecting Shaft	219	Outlet
26	Connecting Shell	220	Air Fitting
27	Middle Shaft	PRK	Repair Kit
28	Air Centre Cover	P07K	(7, 8, 9, 10, 36)
29	Slider Shell	P17K	(1 x 17, 18, 104, 106)
30	Piston Shaft	P32K	(2 x 32, 33, 34, 35)

When ordering parts, specify model number and part required

