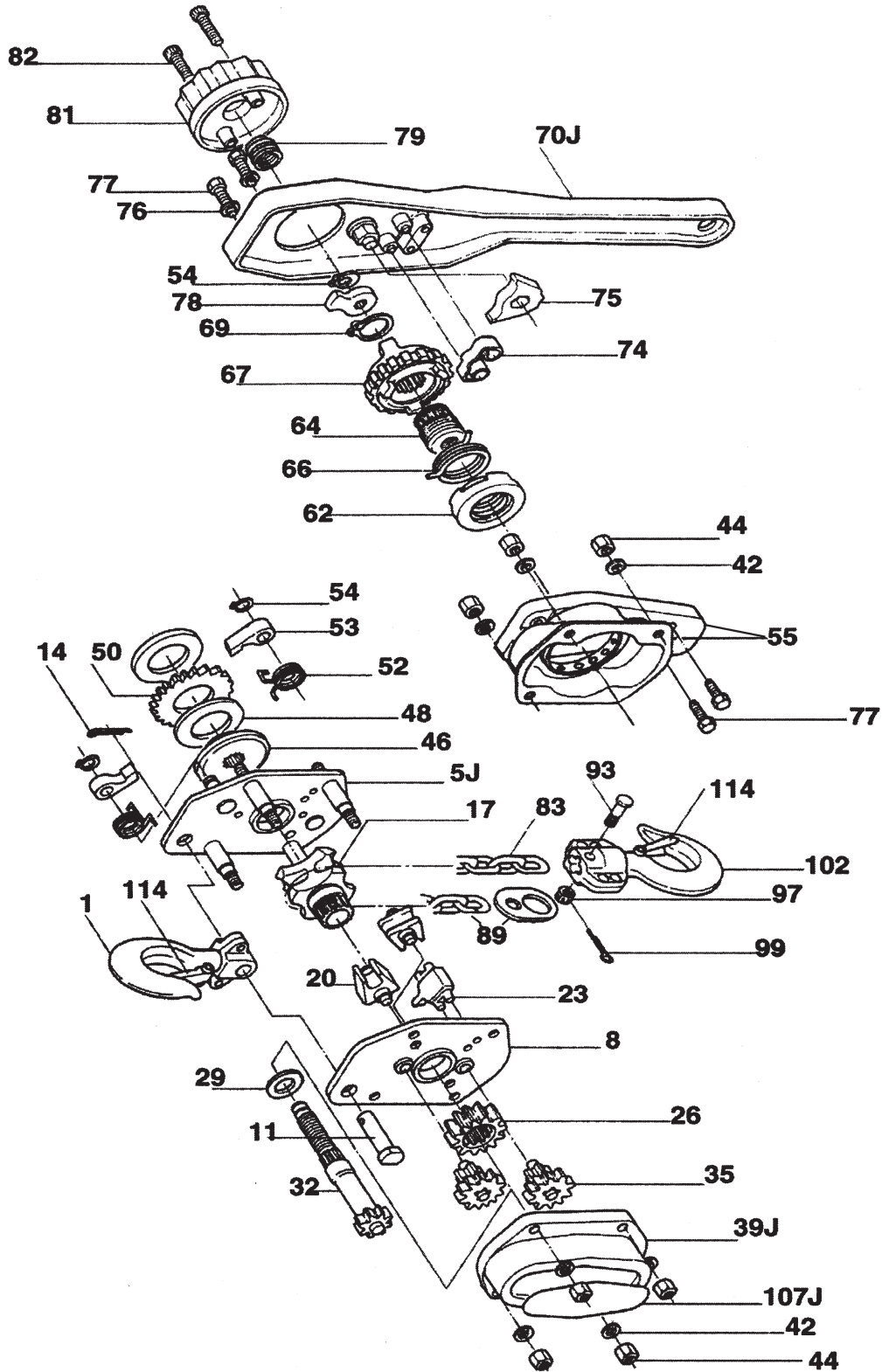


JET #10 -2 3/4 Ton Puller Product #110241



JET #10 -2 3/4 Ton Puller Product #110241

REF	PART	DESCRIPTION
1	PFS10-JP751	TOP HOOK ASSY INCLDS #11,14
5J	PFS10-JP755J	CASING A ASSY
8	PFS10-JP758	CASING B ASSY
11	PFS10-JP7511	TOP HOOK PIN INCLDS #14
14	PFS10-JP7514	SPLIT PIN 3X18
17	PFS10-JP7517	LOAD SHEAVE 5.6MM
20	PFS10-JP7520	CHAIN GUIDE 5.6MM (2)
23	PFS10-JP7523	STRIPPER
26	PFS10-JP7526	LOAD GEAR
29	PFS10-JP7529	WASHER A 18.2X28X2
29B	PFS10-2-7529B	WASHER A 18.2X28X2 #10-2
32	PFS10-JP7532	PINION A
35	PFS10-JP7535	GEAR A ASSY
39J	PFS10-JP7539J	GEAR COVER ASSY
42	PFS10-TS1550061	LOCK WASHER M8 (8): N.L.REQ.
44	PFS10-TS1540061	HEX NUT M8 (8)
46	PFS10-JP7546	DISC HUB A
48	PFS10-JP7548	DISC BRAKE 55X32 (2)
50	PFS10-JP7550	RATCHET DISC A
52	PFS10-JP7552	COIL SPRING B (2)
53	PFS10-JP7553	BRAKE PAWL (2)
54	PFS10-JP7554	SNAP RING (2)
55	PFS10-JP7555	BRAKE COVER INCLDS
62	PFS10-JP7562	BRAKE HUB OLD STYLE
62B	PFS10-2-7562B	BRAKE HUB #10-2
64	PFS10-2-7564B	PEELER #10-2
66	PFS10-JP7566	COIL SPRING A
67	PFS10-JP7567	RATCHET
69	PFS10-JP7569	SNAP RING 25.0 ID
70J	PFS10-JP7570J	HANDLE ASSY 268L
74	PFS10-JP7574	PLATE SPRING
75	PFS10-JP7575	LEVER PAWL
77	PFS10-JP7577	HEX CAP BOLT M6X14(2)
77B	PFS10-2-7577B	HEX CAP BOLT W/WSHR M6X14 (2)
78	PFS10-JP7578	STOPPER
79	PFS10-JP7579	FREE WHEELING SPRING
81	PFS10-JP7581	HAND WHEEL OLD STYLE
81B	PFS10-2-7581B	HAND WHEEL #10-2 NEW TYPE
82	PFS10-TS150307	HEX SKT CAP SCREW M6X30 (2)
82B	PFS10-2-150307B	GT CAP SCREW M6X20 (2) #10-2
83	115152	LINK CHAIN 5.6MM
89	PFS10-JP7589	LINK CHAIN STOP
93	PFS10-JP7593	CHAIN STOP PIN
97B	PFS10-2-7597B	U-NUT M6
102	PFS10-JP75102	BOTTOM HOOK ASSY
107J	PFS10-JP75107J	NAME PLATE (W/TWO RIVETS)#10
114	PFS10-JP75114	SAFETY LATCH ASSY (2)