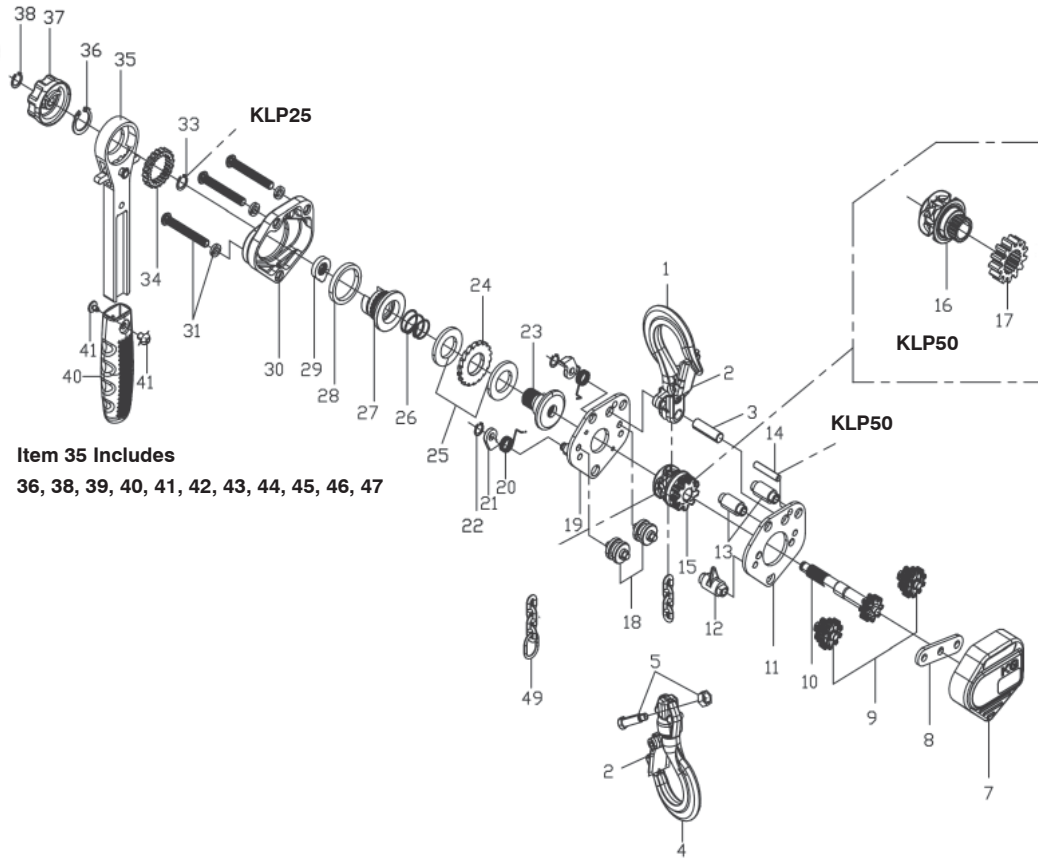


KLP-25-5 1/4 T, KLP-50-5 1/2 T LEVEL HOIST PROD. NO. 110803, 110804



Item 35 Includes
36, 38, 39, 40, 41, 42, 43, 44, 45, 46, 47

| NUMBER | DESCRIPTION |
|--------------|---------------------------------|
| PVI-KLP25-01 | Top Hook Assembly (Incl. #2) |
| PVI-KLP25-02 | Safety Latch Kit |
| PVI-KLP25-03 | Top Hook Shaft |
| PVI-KLP25-04 | Bottom Hook Assembly (Incl. #2) |
| PVI-KLP25-07 | Gear Case |
| PVI-KLP25-08 | Reinforced Plate |
| PVI-KLP25-09 | Load Gear |
| PVI-KLP25-10 | Driving Pinion |
| PVI-KLP25-11 | Right Side Plate |
| PVI-KLP25-12 | Chain Stripper |
| PVI-KLP25-13 | Stay Bolt |
| PVI-KLP25-15 | Load Sheave Assembly (250 Kg) |
| PVI-KLP25-18 | Chain Guide |
| PVI-KLP25-19 | Lift Side Plate Assembly |
| PVI-KLP25-20 | Pawl Spring |
| PVI-KLP25-21 | Pawl |
| PVI-KLP25-22 | Snap Ring For Pawl |

| NUMBER | DESCRIPTION |
|--------------|---------------------------------|
| PVI-KLP50-01 | Top Hook Assembly (Incl. #2) |
| PVI-KLP50-02 | Safety Latch Kit |
| PVI-KLP50-03 | Top Hook Shaft |
| PVI-KLP50-04 | Bottom Hook Assembly (Incl. #2) |
| PVI-KLP50-05 | Chain Pin |
| PVI-KLP50-07 | Gear Case |
| PVI-KLP50-08 | Reinforced Plate |
| PVI-KLP50-09 | Load Gear |
| PVI-KLP50-10 | Driving Pinion |
| PVI-KLP50-11 | Right Side Plate |
| PVI-KLP50-12 | Chain Stripper |
| PVI-KLP50-13 | Stay Bolt |
| PVI-KLP50-14 | Pin |
| PVI-KLP50-16 | Load Gear |
| PVI-KLP50-17 | Load Sheave |
| PVI-KLP50-18 | Chain Guide |
| PVI-KLP50-19 | Lift Side Plate Assembly |

KLP-25-5 1/4 T, KLP-50-5 1/2 T LEVEL HOIST PROD. NO. 110803, 110804

| NUMBER | DESCRIPTION | NUMBER | DESCRIPTION |
|---------------|-----------------------------------|---------------|--------------------------------|
| PVI-KLP25-23 | Brake Seat | PVI-KLP50-20 | Pawl Spring |
| PVI-KLP25-24 | Ratchet Disc | PVI-KLP50-21 | Pawl |
| PVI-KLP25-25 | Friction Disc | PVI-KLP50-22 | Snap Ring For Pawl |
| PVI-KLP25-26 | Spring | PVI-KLP50-23 | Brake Seat |
| PVI-KLP25-27 | Brake Plate | PVI-KLP50-24 | Ratchet Disc |
| PVI-KLP25-28 | Bushing | PVI-KLP50-25 | Friction Disc |
| PVI-KLP25-29 | Cam Guide | PVI-KLP50-26 | Spring |
| PVI-KLP25-30 | Brake Cover | PVI-KLP50-27 | Brake Plate |
| PVI-KLP25-31 | Spring Washer | PVI-KLP50-28 | Bushing |
| PVI-KLP25-32 | Socket Head Screw | PVI-KLP50-29 | Cam Guide |
| PVI-KLP25-33 | Snap Ring For Brake Seat (250 Kg) | PVI-KLP50-30 | Brake Cover |
| PVI-KLP25-34 | Change Over Gear | PVI-KLP50-31 | Spring Washer |
| PVI-KLP25-37 | Hand Wheel | PVI-KLP50-32 | Head Screw |
| PVI-KLP25-35 | Lever Handle Assembly | PVI-KLP50-34 | Change Over Gear |
| PVI-KLP25-36 | Snap Ring | PVI-KLP50-37 | Hand Wheel |
| PVI-KLP25-38 | Snap Ring For Hand Wheel | PVI-KLP50-35 | Lever Handle Assembly |
| PVI-KLP25-39 | Lever Handle | PVI-KLP50-36 | Snap Ring |
| PVI-KLP25-40 | Handle Sleeve | PVI-KLP50-38 | Snap Ring For Hand Wheel |
| PVI-KLP25-41 | Bolt | PVI-KLP50-39 | Lever Handle |
| PVI-KLP25-42 | Locking Nut | PVI-KLP50-40 | Handle Sleeve |
| PVI-KLP25-43 | Selector Lever | PVI-KLP50-41 | Bolt |
| PVI-KLP25-44 | Change Over Pawl | PVI-KLP50-42 | Locking Nut |
| PVI-KLP25-45 | Snap Ring For Change Over Pawl | PVI-KLP50-43 | Selector Lever |
| PVI-KLP25-46 | Roller | PVI-KLP50-44 | Change Over Pawl |
| PVI-KLP25-47 | Change Over Spring | PVI-KLP50-45 | Snap Ring For Change Over Pawl |
| PVI-KLP25-49 | End Ring | PVI-KLP50-46 | Roller |
| | | PVI-KLP50-47 | Change Over Spring |
| | | PVI-KLP50-49 | End Ring |