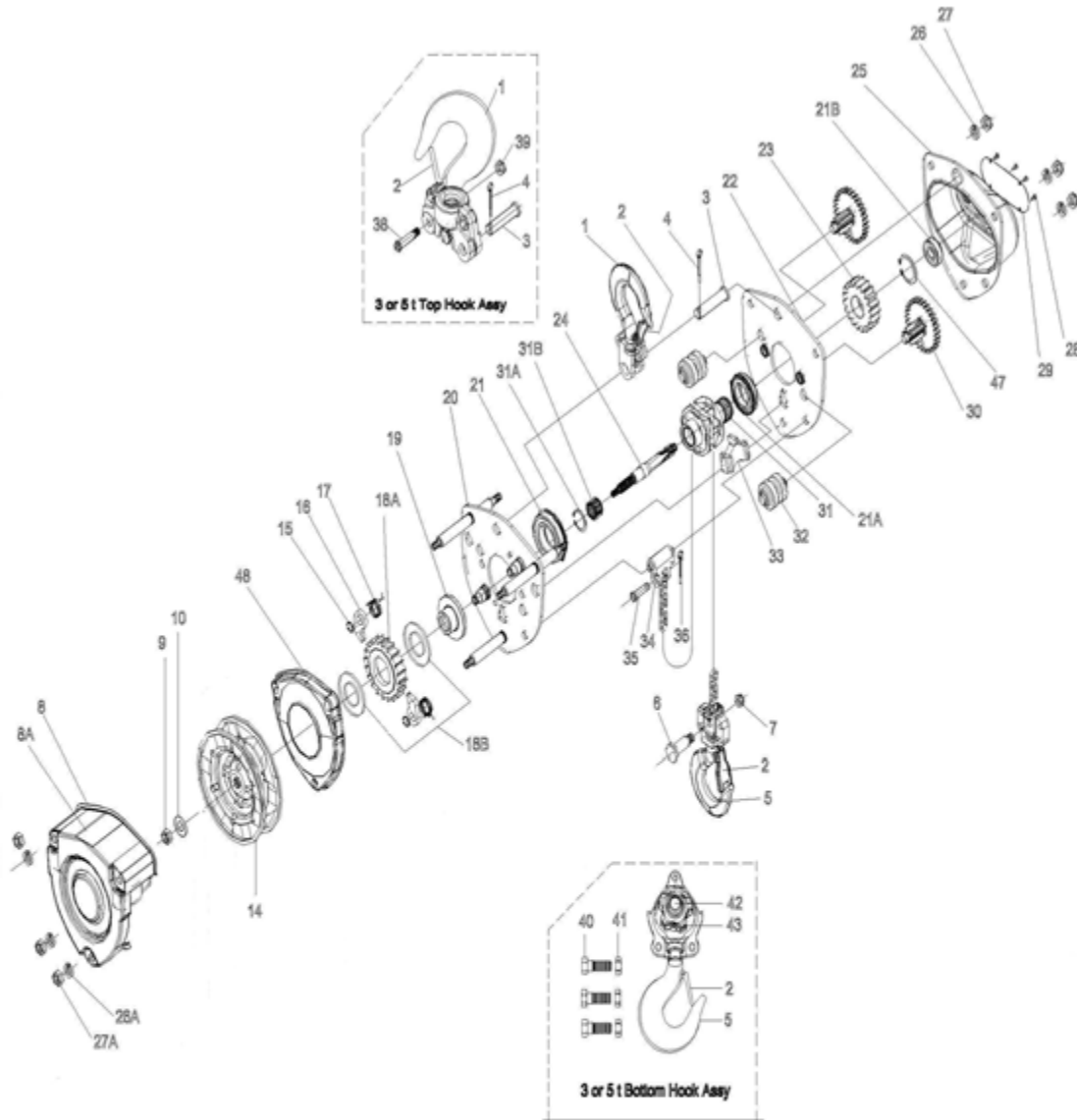


# KCH CHAIN HOIST PRODUCT # 101102,112,,132,142,152



**KCH CHAIN HOIST PRODUCT # 101102,112,,132,142,152**

REF	PART NUMBER	PART NUMBER	PART NUMBER	DESCRIPTION	REQ
1	PVI-KCH05-1	PVI-KCH10-1	PVI-KCH20-1	Top Hook Assembly	1
2	PVI-KCH05-2	PVI-KCH10-2	PVI-KCH20-2	Safety Latch Assembly	2
3	PVI-KCH05-3	PVI-KCH10-3	PVI-KCH20-3	Top Hook Shaft	1
4	PVI-KCH05-4	PVI-KCH10-4	PVI-KCH20-4	Split Pin	1
5	PVI-KCH05-5	PVI-KCH10-5	PVI-KCH20-5	Bottom Hook Assembly	1
6	PVI-KCH05-6	PVI-KCH10-6	PVI-KCH20-6	Bottom Hook Shaft	1
7	PVI-KCH05-7	PVI-KCH10-7	PVI-KCH20-7	Lock Nut	1
8	PVI-KCH05-8	PVI-KCH10-8	PVI-KCH20-8	Hand Wheel Cover Assembly	1
8A	PVI-KCH05-8A	PVI-KCH10-8A	PVI-KCH20-8A	Warning Label	1
9	PVI-KCH05-9	PVI-KCH10-9	PVI-KCH20-9	Wheel Stopper	1
10	PVI-KCH05-10	PVI-KCH10-10	PVI-KCH20-10	Pin	1
11	PVI-KCH05-11	PVI-KCH10-11	PVI-KCH20-11	Split Pin	1
14	PVI-KCH05-14	PVI-KCH10-14	PVI-KCH20-14	Hand Chain Wheel	1
15	PVI-KCH05-15	PVI-KCH10-15	PVI-KCH20-15	Snap Ring	2
16	PVI-KCH05-16	PVI-KCH10-16	PVI-KCH20-16	Pawl	2
17	PVI-KCH05-17	PVI-KCH10-17	PVI-KCH20-17	Pawl Spring	2
18A	PVI-KCH05-18A	PVI-KCH10-18A	PVI-KCH20-18A	Ratchet Disc	1
18B	PVI-KCH05-18B	PVI-KCH10-18B	PVI-KCH20-18B	Brake Discs	2
19	PVI-KCH05-19	PVI-KCH10-19	PVI-KCH20-19	Disc Hub	1
20	PVI-KCH05-20	PVI-KCH10-20	PVI-KCH20-20	Wheel Side Plate Assembly	1
21	PVI-KCH05-21	PVI-KCH10-21	PVI-KCH20-21	Seal Type Caged Roller Bearings	1
21A	PVI-KCH05-21A	PVI-KCH10-21A	PVI-KCH20-21A	Seal Type Caged Roller Bearings	1
21B	PVI-KCH05-21B	PVI-KCH10-21B	PVI-KCH20-21B	Seal Type Caged Roller Bearings	1
22	PVI-KCH05-22	PVI-KCH10-22	PVI-KCH20-22	Gear Side Plate Assembly	1
23	PVI-KCH05-23	PVI-KCH10-23	PVI-KCH20-23	Load Gear	1
24	PVI-KCH05-24	PVI-KCH10-24	PVI-KCH20-24	Drive Shaft	1
25	PVI-KCH05-25	PVI-KCH10-25	PVI-KCH20-25	Gear Case Assembly	1
26	PVI-KCH05-26	PVI-KCH10-26	PVI-KCH20-26	Spring Washer	3
27	PVI-KCH05-27	PVI-KCH10-27	PVI-KCH20-27	Lock Nut	3
28	PVI-KCH05-28	PVI-KCH10-28	PVI-KCH20-28	Rivet	4
29	PVI-KCH05-29	PVI-KCH10-29	PVI-KCH20-29	Name Plate	1
30	PVI-KCH05-30	PVI-KCH10-30	PVI-KCH20-30	Spur Gear Assembly	2
31	PVI-KCH05-31	PVI-KCH10-31	PVI-KCH20-31	Load Sheave Assembly	1
32	PVI-KCH05-32	PVI-KCH10-32	PVI-KCH20-32	Guide Roller	2
33	PVI-KCH05-33	PVI-KCH10-33	PVI-KCH20-33	Stripper	1
34	PVI-KCH05-34	PVI-KCH10-34	PVI-KCH20-34	Anchor Plate	1
35	PVI-KCH05-35	PVI-KCH10-35	PVI-KCH20-35	Load Pin	1

**KCH CHAIN HOIST PRODUCT # 101102,112,,132,142,152**

REF	PART NUMBER	PART NUMBER	DESCRIPTION	REQ
1	PVI-KCH30-1	PVI-KCH50-1	Top Hook Assembly	1
2	PVI-KCH30-2	PVI-KCH50-2	Safety Latch Assembly	2
3	PVI-KCH30-3	PVI-KCH50-3	Top Hook Shaft	1
4	PVI-KCH30-4	PVI-KCH50-4	Split Pin	1
5	PVI-KCH30-5	PVI-KCH50-5	Bottom Hook Assembly	1
8	PVI-KCH30-8	PVI-KCH50-8	Hand Wheel Cover Assembly	1
8A	PVI-KCH30-8A	PVI-KCH50-8A	Warning Label	1
9	PVI-KCH30-9	PVI-KCH50-9	Wheel Stopper	1
10	PVI-KCH30-10	PVI-KCH50-10	Pin	1
11	PVI-KCH30-11	PVI-KCH50-11	Split Pin	1
14	PVI-KCH30-14	PVI-KCH50-14	Hand Chain Wheel	1
15	PVI-KCH30-15	PVI-KCH50-15	Snap Ring	2
16	PVI-KCH30-16	PVI-KCH50-16	Pawl	2
17	PVI-KCH30-17	PVI-KCH50-17	Pawl Spring	2
18A	PVI-KCH30-18A	PVI-KCH50-18A	Ratchet Disc	1
18B	PVI-KCH30-18B	PVI-KCH50-18B	Brake Disc	2
19	PVI-KCH30-19	PVI-KCH50-19	Disc Hub	1
20	PVI-KCH30-20	PVI-KCH50-20	Wheel Side Plate Assembly	1
21	PVI-KCH30-21	PVI-KCH50-21	Seal Type Caged Roller Bearings	1
21A	PVI-KCH30-21A	PVI-KCH50-21A	Seal Type Caged Roller Bearings	1
21B	PVI-KCH30-21B	PVI-KCH50-21B	Seal Type Caged Roller Bearings	1
22	PVI-KCH30-22	PVI-KCH50-22	Gear Side Plate Assembly	1
23	PVI-KCH30-23	PVI-KCH50-23	Load Gear	1
24	PVI-KCH30-24	PVI-KCH50-24	Drive Shaft	1
25	PVI-KCH30-25	PVI-KCH50-25	Gear Case Assembly	1
26	PVI-KCH30-26	PVI-KCH50-26	Spring Washer	3
27	PVI-KCH30-27	PVI-KCH50-27	Lock Nut	3
28	PVI-KCH30-28	PVI-KCH50-28	Rivet	4
29	PVI-KCH30-29	PVI-KCH50-29	Name Plate	1
30	PVI-KCH30-30	PVI-KCH50-30	Spur Gear Assembly	2
31	PVI-KCH30-31	PVI-KCH50-31	Load Sheave Assembly	1
32	PVI-KCH30-32	PVI-KCH50-32	Guide Roller	2
33	PVI-KCH30-33	PVI-KCH50-33	Stripper	1
34	PVI-KCH30-34	PVI-KCH50-34	Anchor Plate	1
35	PVI-KCH30-35	PVI-KCH50-35	Load Pin	1
36	PVI-KCH30-36	PVI-KCH50-36	Split Pin	1
38	PVI-KCH30-38	PVI-KCH50-38	Top Hook Pin	1
39	PVI-KCH30-39	PVI-KCH50-39	Lock Nut	1
40	PVI-KCH30-40	PVI-KCH50-40	Socket Cap Screw	2
41	PVI-KCH30-41	PVI-KCH50-41	Lock Nut	3
42	PVI-KCH30-42	PVI-KCH50-42	Idle Shaft	1
43	PVI-KCH30-43	PVI-KCH50-43	Idle Sheave	1
47	PVI-KCH30-47	PVI-KCH50-47	Snap Pin	1