

Cody Company, Inc.

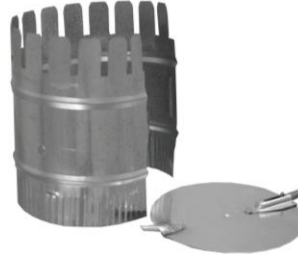
#500, #501, #508, & #509 SHEET METAL START COLLARS



#500



#501



#508



#509

- Constructed of ASTM-A653 CS Type B Galvanized Metal
- Button Lock Connection
- 3/4" Dove Tail Tabs for Sheet Metal Installation
- Crimped Edge for Easy Installation
- #500 and #501 have Knock-Out Holes for Damper Installation
- #500 -Unassembled; #501- Factory assembled
- #508 is unassembled and includes standard #300 damper
- #509 is factory assembled and includes Standard #300 damper
- #509 Optional: Damper Regulator Stand-offs Type "A" or "B"
- Sizes are Embossed on the Collar
- SMACNA Gauges Available
- Standard Gauges:

Standard Gauge

3" to 10"	30 GA
12" to 14"	28 GA
16" to 18"	26 GA
18" to 24"	24 GA



Type A



Type B

Submittal Approval:

Job: _____

Location: _____

Engineer _____

PO No: _____

Job No: _____

Representative: _____

APPROVED for CONSTRUCTION:

By: _____

Title: _____

Date: _____

4200 I 45, P.O. Box 1320, Ennis, TX 75120 Tel. (972) 875-5884 Fax (972) 875-0308
7951 East Evans Rd., San Antonio, TX 78266 Tel. (210) 651-5305 Fax (210) 651-5660

www.codycompany.com