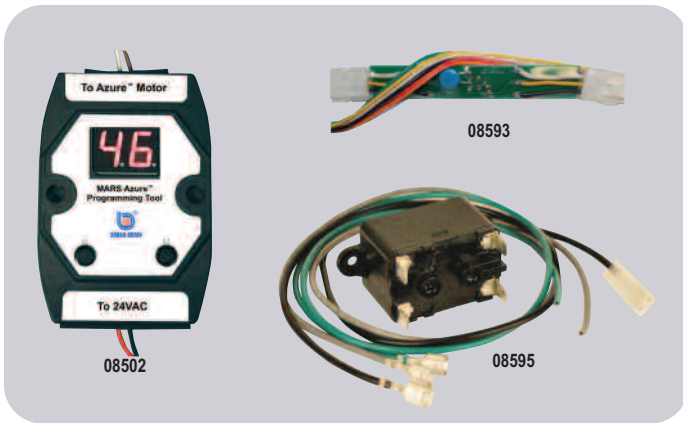


Accessories for Azure® Digi-Motor®



MARS NO.	DESCRIPTION
08502	Hand Held Programmer 10860/10861
08593	Replacement Surge Protector 10860/10861
08595	Constant Fan Kit 10860/10861



MARS NO.	DESCRIPTION
08598	Replacement Surge Protector 10870



MARS NO.	DESCRIPTION
08504	Software Kit for Adjusting Speed and Rotation for 10890

Outdoor Condenser Fan Motors

MARS up/down outdoor condenser fan motors are designed for either vertical shaft-up or shaft-down applications. Shell and end shields are enclosed for weather protection. A weep hole is provided in each end shield to allow condensate to drain. All of these motors are suitable for air conditioning or heat pump applications.

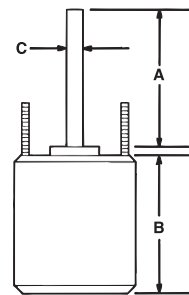


Features:

- All angle, sleeve or ball bearing
- Rheem mounting holes w/screws installed
- Water slinger on shaft
- Thru bolt or band mounting
- Capacitor requirement noted on motor label
- Double full flatted shaft

Specifications:

- Class "B" insulation
- Single phase, 60 Hertz
- Thermal overload protected
- Fan duty, continuous, air over
- Totally enclosed non-ventilated
- 26 & 36 inch leads
- UL Recognized



Reversible Rotation – Single Speed

MARS NO.	HP	VOLTS	AMPS	CAP REQ.	ENCL.	BRG.	DIMENSIONS			LEAD LENGTHS
							A	B	C	
1075 RPM										
10725	1/8	208-230	0.72	5/370	TEAO	Sleeve	6.50	4.12	1/2	36"
10727	1/6	208-230	0.90	5/370	TEAO	Sleeve	6.50	4.23	1/2	26"
10726	1/5	208-230	1.17	5/370	TEAO	Sleeve	6.50	4.12	1/2	36"
10728	1/4	208-230	1.8	5/370	TEAO	Sleeve	6.50	4.23	1/2	26"
10729	1/3	208-230	2.4	7.5/370	TEAO	Sleeve	6.50	5.23	1/2	26"
10730	1/2	208-230	3.5	10/370	TEAO	Sleeve	6.50	5.73	1/2	26"
10731	3/4	208-230	5.2	10/370	TEAO	Ball	6.50	6.23	1/2	30.5"

MARS NO.	HP	VOLTS	AMPS	CAP REQ.	ENCL.	BRG.	DIMENSIONS			LEAD LENGTHS
							A	B	C	
825 RPM										
10411	1/8	208-230	0.80	5/370	TEAO	Sleeve	6.50	4.13	1/2	36"
10403	1/6	208-230	1.0	5/370	TEAO	Sleeve	6.50	4.23	1/2	36"
10412	1/5	208-230	1.3	5/370	TEAO	Sleeve	6.50	4.40	1/2	36"
10404	1/4	208-230	2.2	5/370	TEAO	Sleeve	6.50	4.48	1/2	36"
10405	1/3	208-230	1.9	7.5/370	TEAO	Sleeve	6.50	5.23	1/2	36"
10746	1/2	208-230	2.8	12.5/370	TEAO	Sleeve	6.50	5.70	1/2	36"