



PYRAMEX

Head and Face **PROTECTION**



Ridgeline® Cap Style Hard Hats



16/case

Non-vented meet ANSI Z89.1 Standards, Type I, Class C, G, and E; Vented meet ANSI Z89.1 Standards, Type I, Class C; CSA Z94.1-15



ABS material

Strong, yet ultra-light for seemingly weightless protection

Low profile design

Offers a low center of gravity for better balance

Rear padded suspension

Provides additional level of comfort on the wearers' neck

Vented pressure pad

Keeps the straps in place providing an additional level of comfort

Replaceable sweat band

Padded fabric and polyurethane foam for all day wear

Swinging hinge points

Allows you to find the most comfortable position on the back of your head

4-position harness points

Allows you to move the harness forward, backward, up or down – allowing for the most optimal position for ultimate comfort

Easy to grasp triangle knob

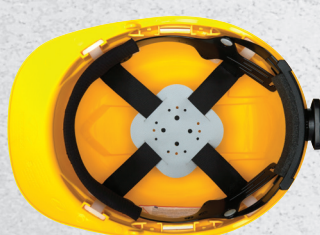
Adjusts the suspension from 6 1/2 to 8-inch hat sizes



4-Point Ratchet	4-Point Vented Ratchet	4-Point Glide Lock	6-Point Ratchet	6-Point Glide Lock	Color
Part HP44110••	Part HP44110V•	Part HP44010•	Part HP46110•	Part HP46010•	White
HP44112••	HP44112V•	HP44012•	—	HP46012•	Gray
HP44113••	—	—	—	—	Slate Gray
HP44117•	—	—	—	—	Graphite Pattern
HP44120••	HP44120V•	HP44020•	HP46120•	HP46020•	Red
HP44130••	HP44130V•	HP44030•	HP46130•	HP46030•	Yellow
HP44131••	HP44131V•	—	HP46131•	—	Hi-Vis* Lime
HP44135••	—	HP44035•	HP46135•	HP46035•	Green
HP44141••	HP44141V•	HP44041•	HP46141•	HP46041•	Hi-Vis* Orange
HP44160••	HP44160V•	HP44060•	HP46160•	HP46060•	Blue
HP44162••	—	—	—	—	Light Blue

*Hi-Vis colors have been tested for the "HV" mark.

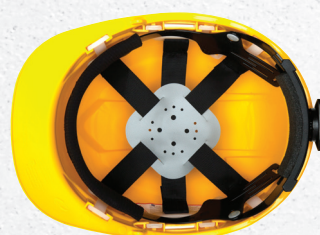
Ridgeline Replacement Suspensions



HPR441
Replacement 4-Point Ratchet



HPR440
Replacement 4-Point Glide Lock



HPR461
Replacement 6-Point Ratchet



HPR460
Replacement 6-Point Glide Lock

Ridgeline® Full Brim Hard Hats US ANSI Z89.1 12/case

Meet ANSI Z89.1 Standards, Type I, Class C, G, and E

- Shell constructed from ABS materials.
- Ratchet suspension is easy to adjust and allows the wearer to modify the fit while wearing hard hat.
- Replaceable suspensions and headbands available.
- 4-point suspension may be converted to 6-point suspension with optional strap (HP6PTSUS).



HP6PTSUS
6-Point Suspension Strap

4-Point Ratchet

Part	Color
HP54110•	White
HP54111•	Black
HP54113•	Slate Gray
HP54117•	Graphite Pattern
HP54120•	Red
HP54130•	Yellow
HP54131•	Hi-Vis* Lime
HP54135•	Green
HP54141•	Hi-Vis* Orange
HP54160•	Blue
HP54170•	Hi-Vis Pink

*Hi-Vis colors have been tested for the "HV" mark.



HPR541
4-Point Replacement Suspension

Ridgeline® Bump Caps 16/box 64/case

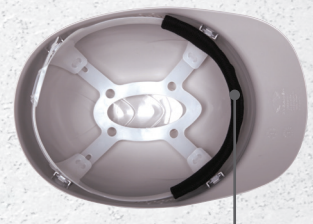
This cap is not designed to meet the ANSI Z89.1 class C, G, & E standards for industrial head protection.



Ventilation holes
Keeps your head cool and dry for all day wear



Glide lock suspension



Replaceable sweat band

4-Point Glide Lock

Part	Color
HP40010	White
HP40011	Black
HP40012	Gray
HP40015	Brown
HP40020	Red
HP40030	Yellow
HP40035	Green
HP40040	Orange
HP40060	Blue

Stylish RIDGELINE bump caps are available for applications where hard hats are not required, but some protection from minor bumps and scalp lacerations are needed. Ridgeline bump caps are made of polyethylene material and are not designed to meet the safety standards for industrial head protection.



BPRBAND
Bump Cap Sweat Band

HEAD PROTECTION

Standard Cap Style Hard Hats



16/case

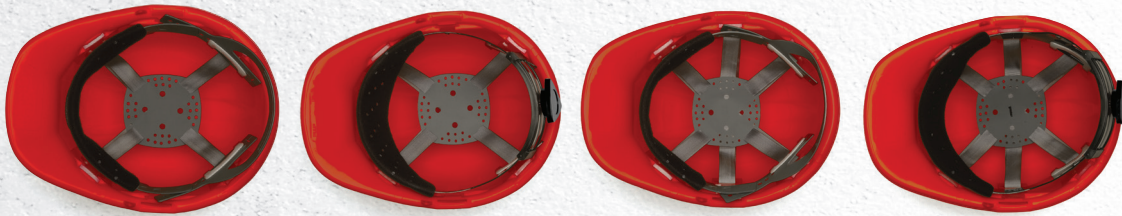
Exceeds ANSI Z89.1, Type 1, Class C, G, and E for industrial head protection; CSA Z94.1-15

HEAD PROTECTION



- Low profile design.
- Shell constructed from High Density Polyethylene materials.
- Rain trough on sides and back of helmet channel moisture away.
- Universal accessory slots fit cap mounted ear muffs and accessories. Hats also accommodate chin straps.
- Snap Lock suspension features "tuck away" adjustments for all day, hassle free wear.
- Ratchet suspension is easy to adjust and allows the wearer to modify the fit while wearing hard hat.
- Cap style is available with 4- and 6-point nylon suspensions – Snap Lock and Ratchet styles.
- Replaceable suspensions and headbands available.

Standard style hard hats have been tested and pass for **reverse orientation**.

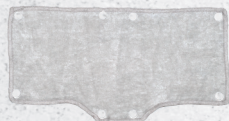


4-Point Snap Lock	4-Point Ratchet	6-Point Snap Lock	6-Point Ratchet	Color
Part	Part	Part	Part	
HP14010•	HP14110••	HP16010•	HP16110•	White
—	HP14111••	—	—	Black
—	HP14112••	—	—	Gray
HP14020•	HP14120••	HP16020•	HP16120•	Red
HP14030•	HP14130••	HP16030•	HP16130•	Yellow
HP14031•	HP14131••	—	—	Hi-Vis* Lime
HP14035•	HP14135••	HP16035•	HP16135•	Green
HP14040•	HP14140••	HP16040•	HP16140•	Orange
—	HP14141••	—	HP16141•	Hi-Vis* Orange
HP14060•	HP14160••	HP16060•	HP16160•	Blue
HP14062•	HP14162••	—	—	Light Blue
—	HP14165••	—	—	Dark Blue
—	HP14170••	—	—	Hi-Vis Pink
—	HP141	—	HP161	Replacement Suspension Only

*Hi-Vis colors have been tested for the "HV" mark.



HHBAND
Universal Replacement
Hard Hat Sweat Band



HPTRBAN
Hard Hat Terry Cloth
Sweat Band



HPCSTRAP
Chin Strap

Standard Full Brim Hard Hats



12/case

Exceeds ANSI Z89.1, Type 1, Class C, G, and E for industrial head protection; CSA Z94.1-15



- Shell constructed from High Density Polyethylene materials.
- Ratchet suspension is easy to adjust and allows the wearer to modify the fit while wearing hard hat.
- Replaceable suspensions and headbands available.



4-Point Ratchet		6-Point Ratchet	
Part	Part	Color	
HP24110••	HP26110•		White
HP24111••	—		Black
HP24120••	HP26120•		Red
HP24130••	HP26130•		Yellow
HP24131•	—		Hi-Vis* Lime
HP24135••	HP26135•		Green
HP24140••	HP26140•		Orange
HP24141••	—		Hi-Vis* Orange
HP24160••	HP26160•		Blue

HP241	HP261	Replacement Suspension Only
-------	-------	-----------------------------

*Hi-Vis colors have been tested for the "HV" mark.

Standard Sleek Shell Hard Hats



12/case

Exceeds ANSI Z89.1, Type 1, Class C, G, and E



Full Brim



Cap Style

- Polyethylene materials.
- Offers impact and penetration resistance.
- Ridgeless low profile design.
- No rain trough- prevents pooling of liquids.
- Ideal for linemen - Exceeds ANSI Type 1, Class E
- Soft brow pad absorbs perspiration.
- Custom imprinting available on hard hats.

Full Brim 4-Point Ratchet		Cap Style 4-Point Ratchet	
Part	Part	Color	
HPS24110•	HPS14110•		White
HPS24112•	—		Gray
HPS24160•	—		Blue

HPSSUS	Replacement Suspension Only
--------	-----------------------------

HEAD PROTECTION

Headgear

FACE PROTECTION



12/box 48/case

Ridgeline Ratchet Headgear

HGBR•

- Constructed from durable nylon
- Universal pegs will accommodate a wide variety of face shields
- Ratchet style adjustment for easy fit
- Pivoting action allows user to lift face shield while wearing
- Crown Width 6.25"
- Universal sizing



1/bag 50/case

Cap Style Adapter

HHAB•

- Constructed from durable nylon with protective plastic coated tension spring
- Universal sizing fits on the brim of most hard hats and accommodates a variety of face shields



1/bag 50/case

Full Brim Adapter

HHABW•

- Constructed from durable nylon
- Dielectric-constructed from 100% nylon materials
- Universal sizing fits on the brim of most hard hats and accommodates a variety of face shields



1/bag 50/case

Black Hard Hat Adapter

HHAN•

- Dielectric-constructed from 100% nylon materials
- Universal sizing fits on the brim of most hard hats and accommodates a variety of face shields



1/bag 50/case

Aluminum Hard Hat Adapter

HHAA•

- Constructed from lightweight aluminum
- Universal sizing fits on the brim of most hard hats and accommodates a variety of face shields



1/bag 50/case

Cap Style Aluminum Adapter

HHAAD•

- Deluxe aluminum construction
- Designed to fit more rounded cap style hard hats
- Accommodates a variety of face shields



1/bag 50/case

Full Brim Aluminum Adapter

HHAAW•

- Designed to fit full brim style hard hats
- Deluxe aluminum construction
- Universal sizing fits most full brim style hard hats and accommodates a wide variety of face shields



1/bag 50/case

Standard Cap Style Adapter

HHABCMS•

- Dielectric
- Hard hat adapters fit into slots of cap style hard hats
- Can be used with cap mounted ear muffs (muffs sold separately)
- Adjustable while using cap mounted ear muffs
- Pivoting action allows user to lift face shield while wearing
- Universal sizing fits on the brim of most hard hats
- Accommodates a variety of face shields
- Shown with HP44110 and CM6010 – sold separately



Ridgeline Cap Style Adapter

HHABCMR•

Face Shields



1/bag 100/case

Polyethylene Face Shield

S1010•

- PETG shield 8" x 15"
- .040" thick
- Shown with HGBR - sold separately



1/bag 50/case

Polyethylene Face Shield

S1015•

- Aluminum bound PETG shield 8" x 15"
- .040" thick
- Shown with HGBR - sold separately



1/bag 100/case

Polycarbonate Face Shield

S1020•

- PC shield 8" x 15"
- .040" thick
- Shown with HGBR - sold separately



1/bag 100/case

Polyethylene Face Shield

S1035•

- Dark green PETG shield 8" x 15"
- .040" thick
- Green tinted - does not contain IR resin
- Shown with HGBR - sold separately

Face Shields



Exceeds ANSI Z89.1; EN166-352:2002; CSA Z94.1-05

FACE PROTECTION



1/bag 50/case

Polycarbonate Face Shield S1040

- Aluminum bound PC shield
- Polycarbonate shield 8" x 15"
- .040" thick
- Shown with HGBR - sold separately



1/bag

HGBR & S1040 Combo Kit HGBRKITCS

- Aluminum bound PC shield
- See S1040 features
- See HGBR features



1/bag 200/case

Wire Mesh Face Shield S1060

- Mesh shield 7.625" x 15"
- Meets only ANSI Z87.1 High Impact Requirements
- Shown with HGBR - sold separately



1/bag 50/case

Polycarbonate Tapered Face Shield S1110

- PC shield 8" x 15.5"
- .078" thick
- Shown with HGBR - sold separately



1/bag 50/case

Polycarbonate Tapered Face Shield S1150

- IR5 shield 8" x 15.5"
- .078" thick
- Shown with HGBR - sold separately



1/bag 50/case

Polycarbonate Cylinder Face Shield S1210

- PC shield 8" x 15.5"
- .078" thick
- Shown with HGBR - sold separately



1/bag 50/case

Polycarbonate Cylinder Face Shield S1250

- IR5 shield 8" x 15.5"
- .078" thick
- Shown with HGBR - sold separately



1/bag 50/case

Polycarbonate Cylinder Face Shield with Holes S1210CC

- PC shield 8" x 15.5"
- .078" thick
- Accessory holes on bottom accommodate - CHICUP sold separately



1/bag 100/case

Chin Protector for S1210CC CHICUP

- 8.46" x 2.74"
- .09" thick



1/bag 36/case

Capstone Shield GG504TSHIELD

- Clear H2X Anti-Fog Lens with Clear Shield



1/bag 36/case

Capstone Shield GG504DTSHIELD

- Clear H2X Anti-Fog Dual Lens with Clear Shield



1/bag 36/case

Capstone Shield GG504TSHIELDIR3

- IR3 H2X Anti-Fog Lens with Tinted Shield



1/bag 36/case

Capstone Shield GG504TSHIELDIR5

- IR5 H2X Anti-Fog Lens with Tinted Shield



PYRAMEX

PHONE 800.736.8673 | FAX 901.861.4967
FACEBOOK facebook.com/pyramexsafety

There's more to see at
PyramexSafety.com

There's more to see at PyramexSafety.com. View products from several angles & zoom in for closer detail. You can narrow your selections with the filtered toolbox. Product flyers and spec sheets for each product are available right from the product page. Go now and explore what Pyramex Safety Products has to offer.

HEADANDFACEBRO