



VARIABLE SPEED FAN COILS

ALL MODELS

- 2, 3, 4, and 5 Tons
- Supports two-stage outdoor units
- Available for Environmentally Sound R-410A systems
- Bolt-on, hard shut-off TXV metering device factory installed on all models
- Sweat connections
- Primary and secondary drain fittings with brass inserts
- Time delay relay (TDR)
- Field installed heater packages from 5 kW – 30 kW available separately
- HUD approved for manufactured housing
- 208/230-1-60 supply voltage
- Multiposition installation – upflow or horizontal left standard, horizontal right with minor modification (field convertible to downflow with accessory kits)
- Filter (washable) factory supplied
- Heat staging option
- Dehumidification function with standardized logic (same as furnaces and SPP).
- 1 inch (25mm) thick insulation with R value of 4.2

PERFORMANCE

- Variable speed ECM motor on all models
- Adjustable cooling and heating ON/OFF delay
- Heat Pump Comfort option to provide higher than normal heating air delivery temperature
- Units tested and certified by manufacturer to achieve a 2% or less leakage rate at 1.0 inch water column

EASY TO INSTALL AND SERVICE

- Multiple electrical entry locations
- TXV and manifold positioned to the side for easier cleaning
- Zero clearance without heaters

WARRANTY*

- 10 year No Hassle replacement limited warranty
- 5 year parts limited warranty
- With timely registration, an additional 5 year parts limited warranty
- * For owner occupied, residential applications only. See warranty certificate for complete details and restrictions, including warranty coverage for other applications.



Use of the AHRI Certified TM Mark indicates a manufacturer's participation in the program. For verification of certification for individual products, go to www.ahridirectory.org.



| Model Number | Tons | Nominal BTU | CFM (L/s) Range | | Dimensions H x W x D in. (mm) | Filter Size in. (mm) | Ship Wt. lbs. (kg) |
|--------------|------|-------------|-----------------|------------|---|------------------------------|--------------------|
| | | | Low | High | | | |
| FVM4X2400B** | 2 | 24,000 | 350 (165) | 1200 (566) | 42-11/16 x 17-5/8 x 22-1/16 (1084 x 448 x 560) | 16-3/8 x 21-1/2 (416 x 546) | 135 (61) |
| FVM4X3600B** | 3 | 36,000 | 415 (196) | 1400 (661) | 53-7/16 x 21-1/8 x 22-1/16 (1357 x 537 x 560) | 19-7/8 x 21-1/2 (505 x 546) | 150 (68) |
| FVM4X4800B** | 4 | 48,000 | 425 (201) | 1600 (755) | 53-7/16 x 21-1/8 x 22-1/16 (1357 x 537 x 560) | 19-7/8 x 21-1/2 (505 x 546) | 172 (78) |
| FVM4X6000B** | 5 | 60,000 | 540 (255) | 2000 (944) | 59-3/16 x 24-11/16 x 22-1/16 (1503 x 627 x 560) | 23-5/16 x 21-1/2 (592 x 546) | 207 (94) |

** B = Copper Tube, Aluminum Fin Evaporator
 BL = Aluminum Tube, Aluminum Fin Evaporator
 BT = Tin Coated Copper Tube, Aluminum Fin Evaporator

FAN COIL MODEL NUMBER IDENTIFICATION GUIDE

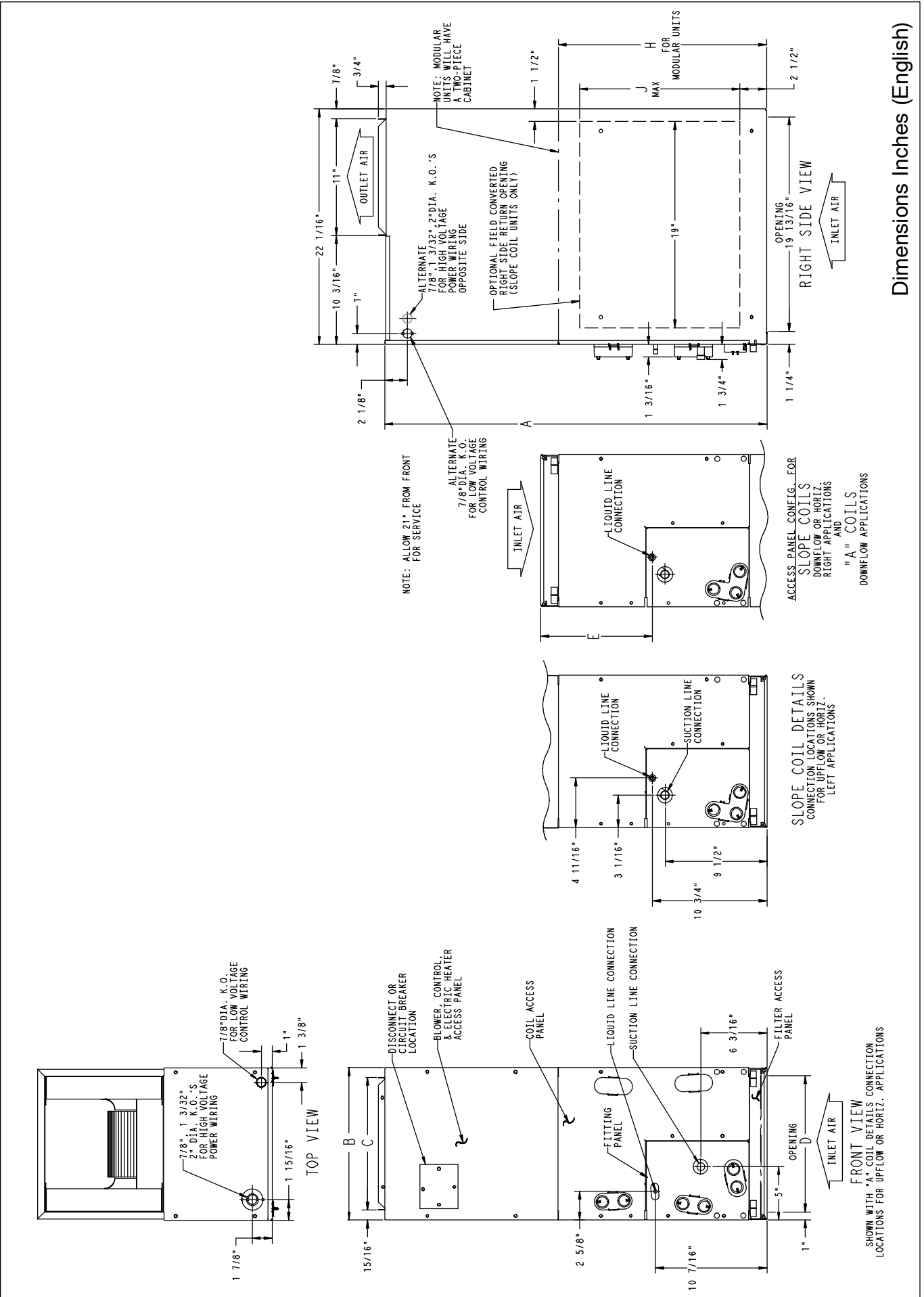
| | | | | | | | | |
|--|----------|--------------------------|----------|------------------------|----------|-------------------------|----------|------------------------------|
| | F | V | M | 4 | X | 2400 | B | T |
| F = Fan Coil | | | | | | | | |
| V = Variable speed ECM motor | | MOTOR TYPE | | | | | | |
| M = Multiposition | | INSTALLATION TYPE | | | | | | |
| 4 = Environmentally Sound R-410A | | | | REFRIGERANT | | | | |
| X = TXV | | | | METERING DEVICE | | | | |
| 2400 = 24,000 BTUH = 2 tons | | | | | | | | |
| 3600 = 36,000 BTUH = 3 tons | | | | | | | | |
| 4800 = 48,000 BTUH = 4 tons | | | | | | | | |
| 6000 = 60,000 BTUH = 5 tons | | | | | | NOMINAL CAPACITY | | |
| B = Copper Tube, Aluminum Fin Evaporator | | | | | | | | |
| BL = Aluminum Tube, Aluminum Fin Evaporator | | | | | | | | |
| BT = Tin Coated Copper Tube, Aluminum Fin Evaporator | | | | | | | | SALES CODE / FEATURES |

ACCESSORIES PART NUMBER IDENTIFICATION GUIDE

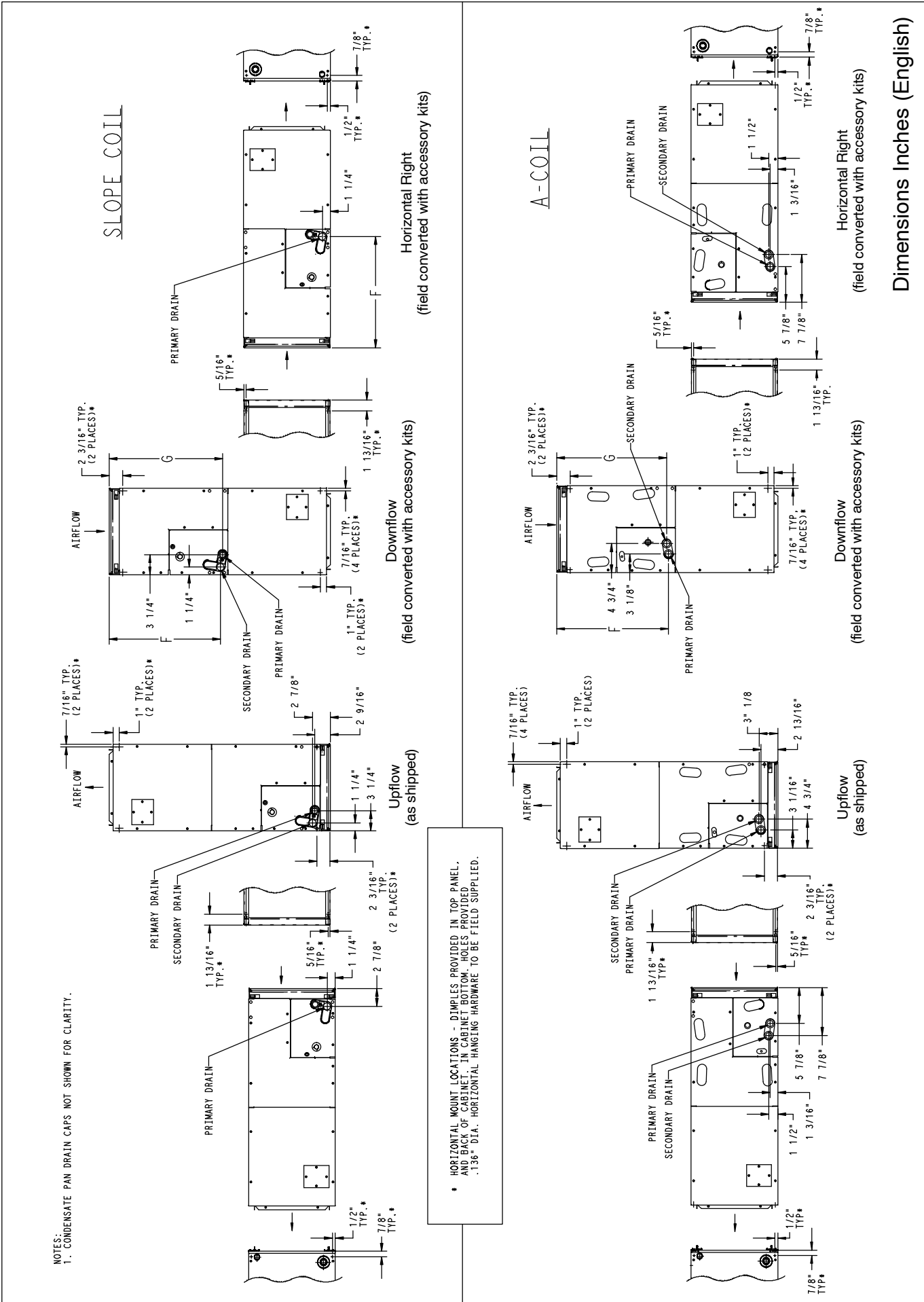
| | | | | | |
|--------------------------------------|-----------|-----------|-----------|------------|----------|
| | EB | AC | 01 | NCB | A |
| EB = Evaporator Blower | | | | | |
| AC = Accessory | | | | | |
| 01 = Product Identifier Number | | | | | |
| NCB = Non-Combustible Base Kit | | | | | |
| DFK = Down Flow Kit | | | | | |
| PLG = Power Plug (no heat kit) | | | | | |
| SPK = Single Point Wiring Kit | | | | | |
| FKS = Filter Kit Small | | | | | |
| FKM = Filter Kit Medium | | | | | |
| FKL = Filter Kit Large | | | | | |
| FKX = Filter Kit Extra Large | | | | | |
| CTK = Condensate Trap Kit (PVC pipe) | | | | | |
| Sales Code | | | | | |

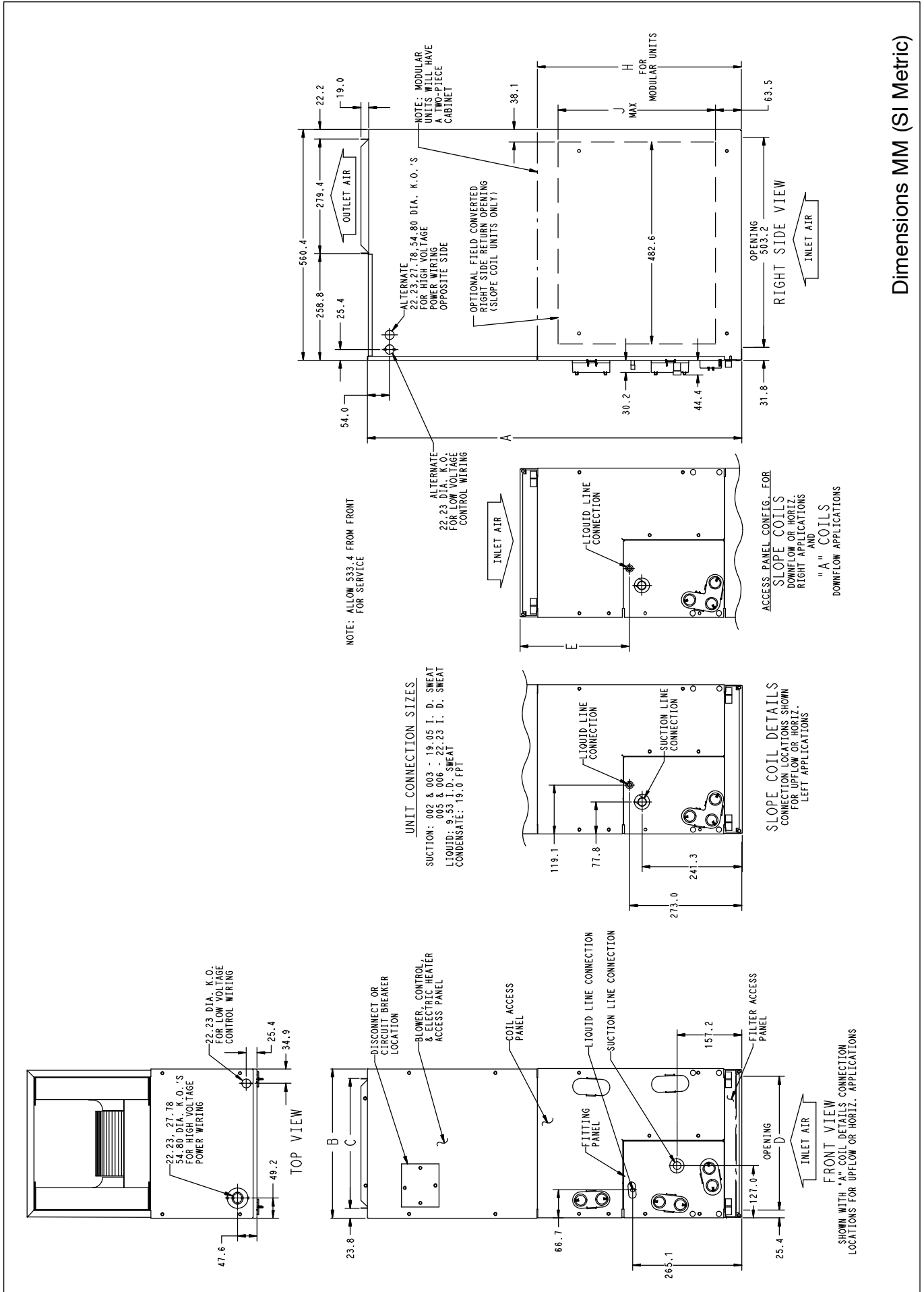
ELECTRIC HEATER MODEL NUMBER IDENTIFICATION GUIDE

| | | | | | | |
|--|------------|---------------------------|----------|----------|----------|----------|
| | EHK | 05 | A | K | N | 1 |
| EHK = Electric Heater Kit | | | | | | |
| 05 = 5 kW | | | | | | |
| 07 = 7 kW | | | | | | |
| 09 = 9 kW | | | | | | |
| 10 = 10 kW | | | | | | |
| 15 = 15 kW | | | | | | |
| 18 = 18 kW | | | | | | |
| 20 = 20 kW | | | | | | |
| 25 = 25 kW | | | | | | |
| 30 = 30 kW | | NOMINAL HEAT VALUE | | | | |
| Sales Code | | | | | | |
| K = 208 / 230 single-phase | | | | | | |
| H = 208 / 230, 3-phase | | | | | | |
| KC = 208 / 230, supplied as single phase, field convertible to 3-phase | | | | | | |
| HC = 208 / 230 supplied as 3-phase, field convertible to single phase | | | | | | |
| VOLTAGE (60 Hz) | | | | | | |
| Product Identifier | | | | | | |
| Engineering Code | | | | | | |



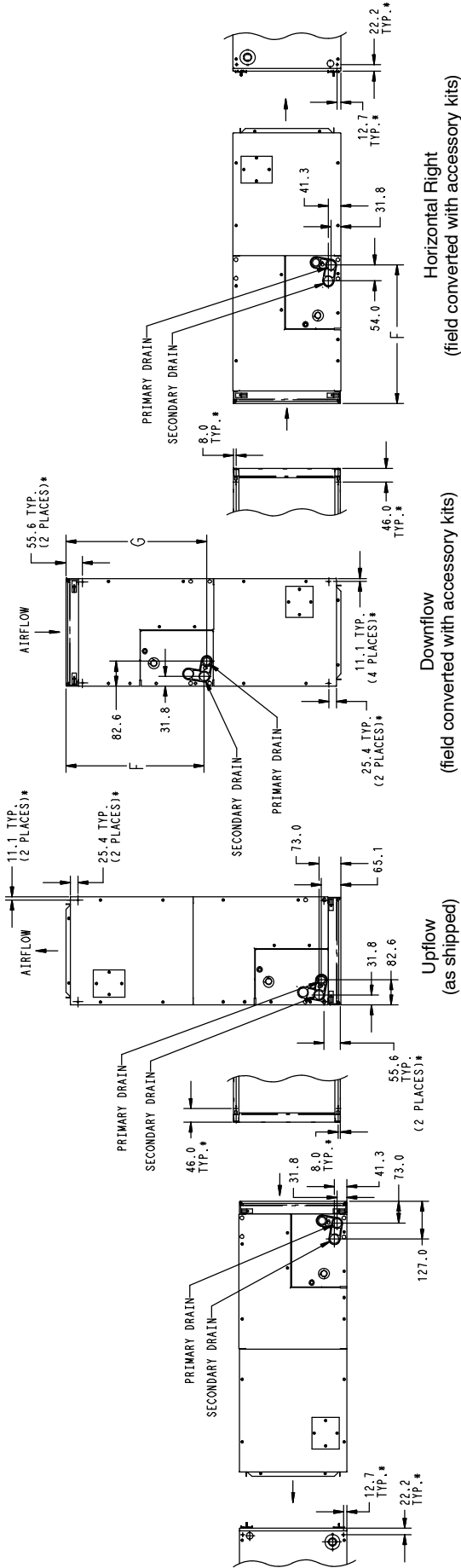
Dimensions Inches (English)



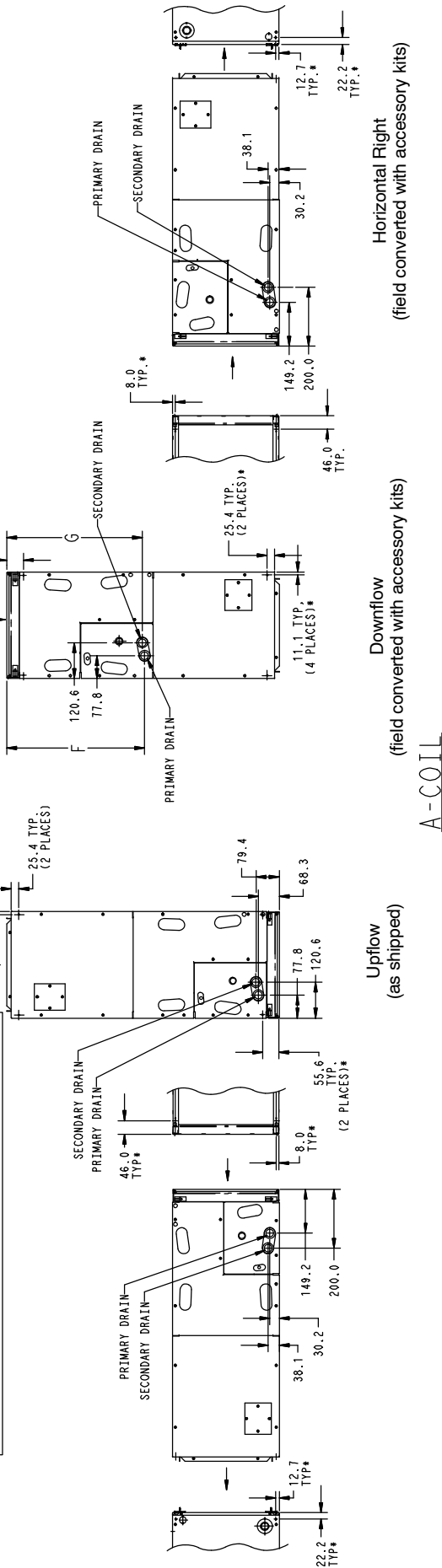


Dimensions MM (SI Metric)

SLOPE COIL



* HORIZONTAL MOUNT LOCATIONS - DIMPLES PROVIDED IN TOP PANEL, AND BACK OF CABINET IN CABINET BOTTOM HOLES PROVIDED. 3.45 DIA. HORIZONTAL HANGING HARDWARE TO BE FIELD SUPPLIED.



A-COIL

Dimensions MM (SI Metric)

| DIMENSIONAL DATA (refer to drawings on previous pages) | | | | | | | | | | | |
|--|-------------|-----------------------------|----------|--------|----------|---------|----------|----------|---------|-----|-----------|
| FVM4X Model | Size (tons) | Dimensions Inches (English) | | | | | | | | | Coil Type |
| | | A | B | C | D | E | F | G | H | J | |
| 2400 | 2 | 42-11/16 | 17-5/8 | 15-3/4 | 15-3/8 | 10-3/4 | 18-9/16 | 18-1/4 | N/A | N/A | "A" |
| 3600 | 3 | 53-7/16 | 21-1/8 | 19-1/4 | 19-1/8 | 19-3/16 | 26-15/16 | 27-1/2 | N/A | 19 | Slope |
| 4800 | 4 | 53-7/16 | 21-1/8 | 19-1/4 | 19-1/8 | 19-1/2 | 27-1/4 | 26-15/16 | N/A | N/A | "A" |
| 6000 | 5 | 59-3/16 | 24-11/16 | 22-3/4 | 22-11/16 | 25-1/4 | 32-15/16 | 32-5/8 | 34-1/16 | N/A | "A" |

| FVM4X Model | Size (tons) | Dimensions mm (SI Metric) | | | | | | | | | Coil Type |
|-------------|-------------|---------------------------|-----|-----|-----|-----|-----|-----|-----|-----|-----------|
| | | A | B | C | D | E | F | G | H | J | |
| 2400 | 2 | 1084 | 448 | 400 | 397 | 273 | 472 | 464 | N/A | N/A | "A" |
| 3600 | 3 | 1357 | 537 | 489 | 486 | 487 | 684 | 699 | N/A | 483 | Slope |
| 4800 | 4 | 1357 | 537 | 489 | 486 | 495 | 692 | 684 | N/A | N/A | "A" |
| 6000 | 5 | 1503 | 627 | 578 | 576 | 641 | 837 | 829 | 865 | N/A | "A" |

| PHYSICAL DATA | | | | |
|---|-----------------------------|-----------------------------|------------------------------|-------------|
| FVM4X | Model Size | | | |
| | 2400 | 3600 | 4800 | 6000 |
| Blower Data | | | | |
| Motor type | Variable Speed ECM motor | | | |
| HP | 1/2 | 1/2 | 1/2 | 3/4 |
| Filter Data (factory supplied, washable) | | | | |
| Filter Size in. (mm) | 16-3/8 x 21-1/2 (416 x 546) | 19-7/8 x 21-1/2 (505 x 546) | 23-5/16 x 21-1/2 (592 x 546) | |
| Coil Data (all coils are 3 row, 14-1/2 fins per inch, wavy lanced bare aluminum fin) | | | | |
| Face Area ft ² (m ²) | 3.46 (0.32) | 3.46 (0.32) | 5.93 (0.55) | 7.42 (0.69) |
| Refrigerant Line Connections (sweat) | | | | |
| Liquid in. (mm) | 3/8 (10) | 3/8 (10) | 3/8 (10) | 3/8 (10) |
| Suction in. (mm) | 3/4 (19) | 7/8 (22) | 7/8 (22) | 7/8 (22) |

| ELECTRICAL DATA, FAN COIL ONLY WITHOUT ELECTRIC HEAT | | | |
|--|-------------------------------|--------------------------------|---|
| FVM4X Model | 208/230V, single phase, 60 Hz | | |
| | Motor Full Load Amps (FLA) | Minimum Circuit Ampacity (MCA) | Maximum Fuse/Ckt Bkr Amps (Max OverCurrent Protection - MOCP) |
| 2400 | 4.3 | 5.4 | 15 |
| 3600 | 4.3 | 5.4 | 15 |
| 4800 | 4.3 | 5.4 | 15 |
| 6000 | 6.8 | 8.5 | 15 |

| AIRFLOW PERFORMANCE - CFM RANGE | | |
|---------------------------------|----------------------------|----------------------|
| FVM4X Model | Use with Outdoor Unit Size | CFM (L/s) Range |
| 2400 | 18, 24, 30, 36 | 350-1200 (165 - 566) |
| 3600 | 24, 30, 36, 42 | 415-1400 (196 - 661) |
| 4800 | 30, 36, 42, 48 | 425-1600 (201 - 755) |
| 6000 | 36, 42, 48, 60 | 540-2000 (255 - 944) |

| AIRFLOW PERFORMANCE – CFM IN COOLING MODE (A/C or Heat Pump) | | | | | | | | | | |
|--|-------------------|----------------------|-------|------------------------------------|-------|---------|-------|----------|-------|------|
| FVM4X Model | Outdoor Unit Size | Single Stage Cooling | | Two-Stage Cooling | | | | Fan Only | | |
| | | Nominal | Dehum | High | | Low | | | | |
| | | | | Nominal | Dehum | Nominal | Dehum | Nominal | Dehum | Low |
| 2400 | 18 | 525 | 420 | Two-Stage outdoor unit not offered | | | | 350 | 420 | 525 |
| | 24 | 700 | 560 | 700 | 560 | 560 | 450 | 350 | 560 | 700 |
| | 30 | 875 | 700 | Two-Stage outdoor unit not offered | | | | 440 | 700 | 875 |
| | 36 | 1050 | 840 | 1050 | 840 | 840 | 670 | 525 | 840 | 1050 |
| 3600 | 24 | 700 | 560 | 700 | 560 | 560 | 450 | 415 | 560 | 700 |
| | 30 | 875 | 700 | Two-Stage outdoor unit not offered | | | | 440 | 700 | 875 |
| | 36 | 1050 | 840 | 1050 | 840 | 840 | 670 | 525 | 840 | 1050 |
| | 42 | 1225 | 980 | Two-Stage outdoor unit not offered | | | | 615 | 980 | 1225 |
| 4800 | 30 | 875 | 700 | Two-Stage outdoor unit not offered | | | | 440 | 700 | 875 |
| | 36 | 1050 | 840 | 1050 | 840 | 840 | 670 | 525 | 840 | 1050 |
| | 42 | 1225 | 980 | Two-Stage outdoor unit not offered | | | | 615 | 980 | 1225 |
| | 48 | 1400 | 1120 | 1400 | 1120 | 1120 | 900 | 700 | 1120 | 1400 |
| 6000 | 36 | 1050 | 840 | 1050 | 840 | 840 | 670 | 540 | 840 | 1050 |
| | 42 | 1225 | 980 | Two-Stage outdoor unit not offered | | | | 615 | 980 | 1225 |
| | 48 | 1400 | 1120 | 1400 | 1120 | 1120 | 900 | 700 | 1120 | 1400 |
| | 60 | 1750 | 1400 | 1750 | 1400 | 1400 | 1120 | 875 | 1400 | 1750 |

NOTES:

1. The above airflows result with the AC/HP CFM ADJUST select jumper set on NOM.
2. Airflow can be adjusted +15% or -10% by selecting Hi or Lo respectively for all modes except fan only.
3. Dry coil at 230 volts and with 10kW heater and filter installed.
4. Airflows shown are valid for systems with total external static pressure between 0.1 and 0.7 inches water column.

| AIRFLOW PERFORMANCE – CFM IN HEAT PUMP HEATING MODE ONLY | | | | | | | | | | |
|--|-------------------|-------------------------|------|------------------------------------|------|---------|------|----------|------|------|
| FVM4X Model | Outdoor Unit Size | Single Stage HP Heating | | Two-Stage HP Heating | | | | Fan Only | | |
| | | Comfort | Eff | High | | Low | | | | |
| | | | | Comfort | Eff | Comfort | Eff | Comfort | Eff | Low |
| 2400 | 18 | 475 | 525 | Two-Stage outdoor unit not offered | | | | 350 | 380 | 475 |
| | 24 | 630 | 700 | 630 | 700 | 505 | 560 | 350 | 505 | 630 |
| | 30 | 785 | 875 | Two-Stage outdoor unit not offered | | | | 440 | 630 | 785 |
| | 36 | 945 | 1050 | 945 | 1050 | 755 | 840 | 525 | 755 | 945 |
| 3600 | 24 | 630 | 700 | 630 | 700 | 505 | 560 | 415 | 505 | 630 |
| | 30 | 785 | 875 | Two-Stage outdoor unit not offered | | | | 440 | 630 | 785 |
| | 36 | 945 | 1050 | 945 | 1050 | 755 | 840 | 525 | 755 | 945 |
| | 42 | 1100 | 1225 | Two-Stage outdoor unit not offered | | | | 615 | 880 | 1100 |
| 4800 | 30 | 785 | 875 | Two-Stage outdoor unit not offered | | | | 440 | 630 | 785 |
| | 36 | 945 | 1050 | 945 | 1050 | 755 | 840 | 525 | 755 | 945 |
| | 42 | 1100 | 1225 | Two-Stage outdoor unit not offered | | | | 615 | 880 | 1100 |
| | 48 | 1260 | 1400 | 1260 | 1400 | 1010 | 1120 | 700 | 1010 | 1260 |
| 6000 | 36 | 945 | 1050 | 945 | 1050 | 755 | 840 | 540 | 755 | 945 |
| | 42 | 1100 | 1225 | Two-Stage outdoor unit not offered | | | | 615 | 880 | 1100 |
| | 48 | 1260 | 1400 | 1260 | 1400 | 1010 | 1120 | 700 | 1010 | 1260 |
| | 60 | 1575 | 1750 | 1575 | 1750 | 1260 | 1400 | 875 | 1260 | 1575 |

NOTES:

1. The above airflows result with the AC/HP CFM ADJUST select jumper set on NOM.
2. Airflow can be adjusted +15% or -10% by selecting Hi or Lo respectively for all modes except fan only.
3. Dry coil at 230 volts and with 10kW heater and filter installed.
4. Airflows shown are valid for systems with total external static pressure between 0.1 and 0.7 inches water column.

| AIRFLOW DELIVERY (CFM) | | | | | | | | | | | | | |
|------------------------|------------------------------|--------------------------|------|------|--------|------|------|--------|------|------|--------|------|------|
| FVM4X Model | Outdoor Unit Capacity (BTUH) | Electric Heater kW Range | | | | | | | | | | | |
| | | 0 – 5 | | | 0 – 10 | | | 0 – 15 | | | 0 – 20 | | |
| | | LO | NOM | HI | LO | NOM | HI | LO | NOM | HI | LO | NOM | HI |
| 2400 | 18 | 625 | 625 | 625 | 675 | 675 | 675 | * | * | * | * | * | * |
| | 24 | 650 | 725 | 835 | * | 725 | 835 | 875 | 875 | 875 | * | * | * |
| | 30 | 815 | 905 | 1040 | * | 905 | 1040 | 900 | 900 | 1040 | 1100 | 1100 | 1100 |
| | 36 | 980 | 1085 | 1250 | 980 | 1085 | 1250 | 980 | 1085 | 1250 | 1100 | 1100 | 1250 |
| 3600 | 24 | 675 | 725 | 835 | 875 | 875 | * | * | * | * | * | * | * |
| | 30 | 815 | 905 | 1040 | 875 | 905 | 1040 | 1100 | 1100 | 1100 | * | * | * |
| | 36 | 980 | 1085 | 1250 | 980 | 1085 | 1250 | 1100 | 1100 | 1250 | 1225 | 1225 | 1250 |
| | 42 | 1140 | 1270 | 1460 | 1140 | 1270 | 1460 | 1140 | 1270 | 1460 | 1225 | 1270 | 1460 |
| | | 0 – 10 | | | 0 – 15 | | | 0 – 20 | | | 0 – 30 | | |
| 4800 | 30 | 975 | 975 | 1040 | 1100 | 1100 | 1100 | * | * | * | * | * | * |
| | 36 | 980 | 1085 | 1250 | 1100 | 1100 | 1250 | 1250 | 1250 | 1250 | * | * | * |
| | 42 | 1140 | 1270 | 1460 | 1140 | 1270 | 1460 | 1250 | 1270 | 1460 | * | * | * |
| | 48 | 1305 | 1450 | 1665 | 1305 | 1450 | 1665 | 1305 | 1450 | 1665 | 1500 | 1500 | 1665 |
| 6000 | 36 | 1100 | 1100 | 1250 | 1350 | 1350 | 1350 | * | * | * | * | * | * |
| | 42 | 1140 | 1270 | 1460 | 1350 | 1350 | 1460 | 1525 | 1525 | 1525 | * | * | * |
| | 48 | 1305 | 1450 | 1665 | 1350 | 1450 | 1665 | 1525 | 1525 | 1665 | 1750 | 1750 | 1750 |
| | 60 | 1630 | 1810 | 2085 | 1630 | 1810 | 2085 | 1630 | 1810 | 2085 | 1750 | 1810 | 2085 |

* Airflow not recommended for heater/system size

NOTE: LO, NOM, and HI refer to AC/HP CFM ADJUST selection on the control board.

| HEAT PUMP MINIMUM CFM WHEN USING ELECTRIC HEAT (CFM) | | | | | | |
|--|-------------------|----------------|----------|------|--------|--------|
| FVM4X Model | Outdoor Unit Size | Heater Size kW | | | | |
| | | 5 | 8, 9, 10 | 15 | 18, 20 | 24, 30 |
| 2400 | 18 | 625 | 625 | -- | -- | -- |
| | 24 | 650 | 725 | 875 | -- | -- |
| | 30 | 800 | 875 | 875 | 1040 | -- |
| | 36 | 970 | 970 | 970 | 1040 | -- |
| 3600 | 24 | 675 | 875 | -- | -- | -- |
| | 30 | 800 | 875 | 1100 | 1150 | -- |
| | 36 | 975 | 975 | 1100 | 1225 | -- |
| | 42 | 1125 | 1125 | 1125 | 1225 | -- |
| 4800 | 30 | 800 | 875 | 875 | 1150 | -- |
| | 36 | 975 | 975 | 1100 | 1225 | -- |
| | 42 | 1125 | 1125 | 1125 | 1225 | -- |
| | 48 | 1305 | 1305 | 1305 | 1305 | 1400 |
| 6000 | 36 | 1100 | 1100 | 1350 | 1350 | -- |
| | 42 | 1125 | 1125 | 1350 | 1350 | -- |
| | 48 | 1300 | 1300 | 1350 | 1465 | 1750 |
| | 60 | 1625 | 1625 | 1625 | 1750 | 1750 |

| A/C MINIMUM CFM WHEN USING ELECTRIC HEAT (CFM) | | | | | | |
|--|-------------|----------------|----------|------|--------|--------|
| FVM4X Model | | Heater Size kW | | | | |
| | | 5 | 8, 9, 10 | 15 | 18, 20 | 24, 30 |
| 2400 | Heater Only | 625 | 625 | 725 | 875 | -- |
| 3600 | | 675 | 700 | 850 | 1050 | -- |
| 4800 | | 675 | 700 | 850 | 1050 | 1400 |
| 6000 | | 1050 | 1050 | 1050 | 1050 | 1750 |

NOTES:

1. Heater Only–Air conditioner with electric heater application.
2. These airflows are minimum acceptable airflows as UL listed. Actual airflow delivered will be per airflow delivery chart for Electric Heating Modes.

| ACCESSORIES | | |
|--|--|---|
| Part Number | Description | Use with Model Sizes |
| EBAC01DSC | Disconnect Kit | use with All Heaters 5 kW thru 10 kW |
| EBAC02NCB | Downflow Base Kit | 2400B |
| EBAC03NCB | | 3600B, 4800B |
| EBAC04NCB | | 6000B |
| EBAC01DFS | | 3600B |
| EBAC02DFA | Downflow Conversion Kit – “A” Coil | 2400B, 4800B, 6000B |
| EBAC01SPK | Single Point Wiring Kit | only for use with 15 kW & 20 kW fused heaters |
| AMFK20SPA or Square D® part # QOU14100JBAF | Single Point Wiring Kit – Square D® Jumper Bar Assembly | Only for use with EHK15AKB and EHK20AKB breaker heaters |
| EBAC01FKM | Filter Kit (washable, box of 12) Factory Supplied | 2400B |
| EBAC01FKL | | 3600B, 4800B |
| EBAC01FKX | | 6000B |
| NASA00201FR | Standard Filter Rack (16 x 20 x 1 filter required) | 2400B |
| NASA00301FR | Standard Filter Rack (20 x 20 x 1 filter required) | 3600B, 4800B |
| NASA00401FR | Standard Filter Rack [quantity 2] (12 x 20 x 1 filter required) | 6000B |
| EBAC01PLG | No Heat (Plug) Kit (box of 6) | ALL (Factory Installed) |
| EBAC01CTK | PVC Condensate Trap Kit (box of 50) | ALL |
| EBAC01GSK | Horizontal/Downflow Gasket Kit | ALL (required for horizontal right and downflow) |

| ELECTRIC HEATERS | | |
|------------------|--|----------------------|
| Part Number | Description | Use with Model Sizes |
| EHK05AKN | 5 kW, single phase, no internal circuit protection | ALL |
| EHK05AKB | 5 kW, single phase, with circuit breakers | ALL |
| EHK07AKN | 8 kW, single phase, no internal circuit protection | ALL |
| EHK07AKB | 8 kW, single phase, with circuit breakers | ALL |
| EHK09AKCN | 9 kW, supplied as single phase, field convertible to 3-phase, no internal circuit protection | 3600B, 4800B, 6000B |
| EHK10AKN | 10 kW, single phase, no internal circuit protection | ALL |
| EHK10AKB | 10 kW, single phase, with circuit breakers | ALL |
| EHK15AKF | 15 kW, single phase, with fuses | ALL |
| EHK15AKB | 15 kW, single phase, with circuit breakers | ALL† |
| EHK15AHN | 15 kW, 3-phase, no internal circuit protection | ALL† |
| EHK18AHN | 18 kW, 3-phase, no internal circuit protection | 4800B, 6000B |
| EHK20AKF | 20 kW, single phase, with fuses | ALL† |
| EHK20AKB | 20 kW, single phase, with circuit breakers | ALL† |
| EHK25AHCF | 24 kW, supplied as 3-phase, field convertible to single phase, with fuses | 4800B, 6000B |
| EHK30AHCF | 30 kW, supplied as 3-phase, field convertible to single phase, with fuses | 4800B, 6000B |

† 15kW & 20kW are not recommended for specific heat pump applications, see AIRFLOW DELIVERY (CFM)