

PRODUCT HIGHLIGHTS FOR 2018

EZY-Tote Tool Carrier

Available with 3 float options, 3 bracket options, and 2 handle options
Pages 30-31



All-Steel Groovers

New design with more bracket options and new sizes
Page 48



ProForm® UHMW Poly Power Troweler Blades

New non-marring white poly blades
Page 40



Elite Series™ Magnesium Hand Floats and Darby

New square and round end hand float styles and new darby
Page 16



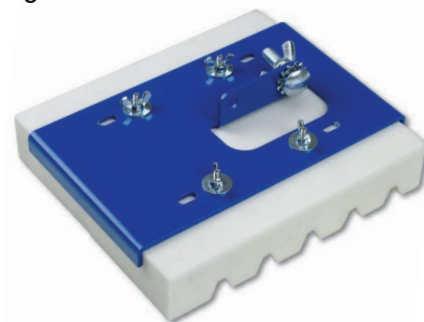
Curved End Edgers

Many new sizes and new one-end curved option
Pages 53, 56



White Rub Brick Mop

New non-marring white Rub Brick Mop
Page 46



Blue Steel Step and Curb Tools

New sizes and styles in both walking and hand tools
Pages 66-67



Asphalt Shoes

New felt-bottom shoes for walking on or tamping down asphalt
Page 81



Sands Level Products

3 new styles of levels, including a light-up LED level, and adjustable T-Square
Pages 103, 104, 106, 109



Elite Series™ Drywall Knives

New ergonomic handle design, new 3" size, and new chisel-end options
Page 145



Landscaping Tools

New Landscaping Scraper and Landscaping Rake
Pages 76, 81



Hi-Craft™ Vacuum Sander

New tool vacuums dust as you work
Page 93



Elite Series

Engineered for the Professional
★★★★★ Five Star Trowel™

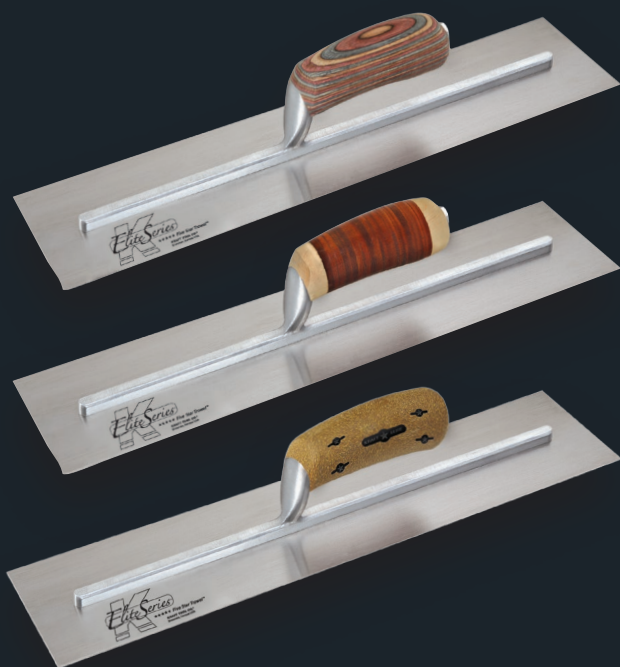


Kraft Tool's Revolutionary Line of Trowels

The Elite Series™ Five Star Trowel is designed and engineered for the professional finisher. These professional trowels are manufactured with state of the art machinery that precisely grinds the working surface of each individual trowel to a perfect finish. This innovative procedure enables these trowels to possess a truly "broken-in" blade ready for immediate use. The Elite Series Five Star™ Trowel is available in four handle styles that make these tools a finisher's favorite trowel: ProForm® soft grip, laminated Hardwood, Leather, and our unique Cork handle.



Elite Series™ CONCRETE FINISHING TROWELS



Carbon Steel Five Star Concrete Trowels

Size	<u>ProForm® Handle</u> No.	<u>Wood Handle</u> No.	<u>Leather Handle</u> No.	<u>Cork Handle</u> No.
12"x3"	CFE211PF	CFE211	CFE211L	CFE211K
12"x4"	CFE212PF	CFE212	CFE212L	CFE212K
14"x3"	CFE216PF	CFE216	CFE216L	CFE216K
14"x4"	CFE217PF	CFE217	CFE217L	CFE217K
14"x5"	CFE534PF	CFE534	CFE534L	CFE534K
16"x4"	CFE222PF	CFE222	CFE222L	CFE222K
16"x5"	CFE535PF	CFE535	CFE535L	CFE535K
18"x4"	CFE227PF	CFE227	CFE227L	CFE227K
18"x5"	CFE546PF	CFE546	CFE546L	CFE546K
20"x4"	CFE231PF	CFE231	CFE231L	CFE231K
20"x5"	CFE232PF	CFE232	CFE232L	CFE232K





Five Star "Broken-In" Blade Ready for Use The Best Blade in the Business

- ★ Stainless Steel Power Pin Rivets for Exceptional Strength
- ★ Greater Flexibility and Durability to Reduce Fatigue
- ★ Unique, Lightweight
- ★ No-Turn Handle
- ★ Precision Ground Edge Ready for Immediate Use

3 Handle Styles

CORK

Moisture wicking properties in cork create a smooth and secure grip on this fatigue-reducing international design.

SOFT GRIP PROFORM®

Handle reduces muscle fatigue after a long day on the job.

LEATHER

Wicks away sweat from hand for a comfortable grip. The only leather handle finishing trowel on the market.

LAMINATED HARDWOOD

Handle comes in a variety of vibrant patterns.



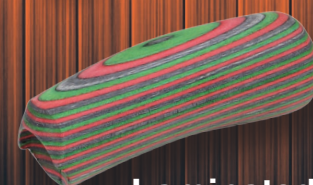
Cork



ProForm®



Leather



Laminated Hardwood



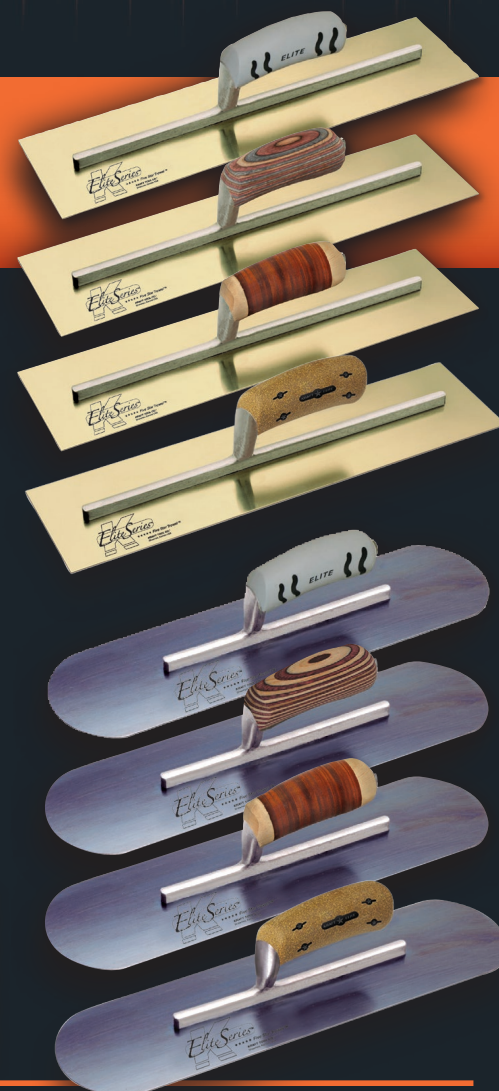
Golden Stainless Steel Five Star Concrete Trowels

- Premium blade has a special heat treatment for a flatter, longer lasting blade

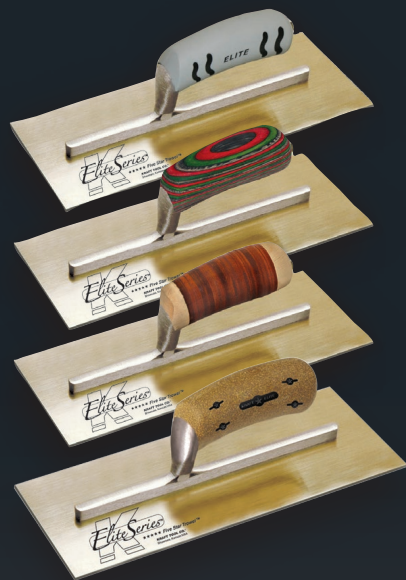
Size	<u>ProForm® Handle</u> No.	<u>Wood Handle</u> No.	<u>Leather Handle</u> No.	<u>Cork Handle</u> No.
12"x4"	CFE536PF	CFE536	CFE536L	CFE536K
14"x4"	CFE541PF	CFE541	CFE541L	CFE541K
14"x5"	CFE543PF	CFE543	CFE543L	CFE543K
16"x3"	CFE532PF	CFE532	CFE532L	CFE532K
16"x5"	CFE545PF	CFE545	CFE545L	CFE545K
18"x5"	CFE548PF	CFE548	CFE548L	CFE548K
20"x5"	CFE549PF	CFE549	CFE549L	CFE549K

Blue Steel Five Star Pool Trowels

Size	Shank	<u>ProForm® Handle</u> No.	<u>Wood Handle</u> No.	<u>Leather Handle</u> No.	<u>Cork Handle</u> No.
14"x4"	6"	CFE277BPF	CFE277B	CFE277BL	CFE277BK
16"x4"	7-7/8"	CFE279BPF	CFE279B	CFE279BL	CFE279BK
16"x4-1/2"	7-7/8"	CFE290BPF	CFE290B	CFE290BL	CFE290BK
18"x4"	15-5/8"	CFE738BPF	CFE738B	CFE738BL	CFE738BK
18"x5"	9-5/8"	CFE292BPF	CFE292B	CFE292BL	CFE292BK
20"x5"	11-5/8"	CFE295BPF	CFE295B	CFE295BL	CFE295BK



EliteSeries™ PLASTER FINISHING TROWELS



Golden Stainless Steel

Five Star Plaster Trowels

- Premium blade has a special heat treatment for a flatter, longer lasting blade

Size	<u>ProForm® Handle</u> No.	<u>Wood Handle</u> No.	<u>Leather Handle</u> No.	<u>Cork Handle</u> No.
11"x4-1/2"	PLE454PF	PLE454	PLE454L	PLE454K
11-1/2"x4-3/4"	PLE457PF	PLE457	PLE457L	PLE457K
12"x5"	PLE459PF	PLE459	PLE459L	PLE459K
13"x5"	PLE460PF	PLE460	PLE460L	PLE460K

Carbon Steel (not shown)

Five Star Plaster Trowels

Size	<u>ProForm® Handle</u> No.	<u>Wood Handle</u> No.	<u>Leather Handle</u> No.	<u>Cork Handle</u> No.
10-1/2"x4-1/2"	PLE425PF	PLE425	PLE425L	PLE425K
11"x4-1/2"	PLE451PF	PLE451	PLE451L	PLE451K
12"x5"	PLE468PF	PLE468	PLE468L	PLE468K
13"x5"	PLE470PF	PLE470	PLE470L	PLE470K

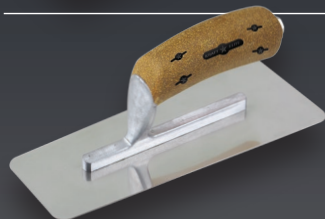


NEW

Midget Trowel

Golden Stainless Steel

Size	<u>ProForm® Handle</u> No.	<u>Wood Handle</u> No.	<u>Leather Handle</u> No.	<u>Cork Handle</u> No.
8"x3"	PLE411PF	PLE411	PLE411L	PLE411K



NEW

Venetian Trowel

Trapezoid shape stainless steel finish trowels. Designed for finishing and polishing decorative plaster and stucco. Machined edge with smooth bright finish.

Size	<u>Cork Handle</u> No.
8"x3"	PLE627K
9-1/2"x3-1/2"	PLE628K

EliteSeries XtremeFLEX™

Special Premium Flexible Stainless Steel Alloy Trowel

- Unique design makes the XtremeFLEX™ lightweight with just the right balance
- Highly flexible blade reduces arm and wrist stress
- Top blade support plate provides a balance of rigidity on this ultra light blade
- Rivetless stainless steel troweling surface features a machined edge for a superior finish
- A great choice for plaster and concrete decor, when flexibility and a light touch are key



Xtreme Flex™ Stainless Steel

Five Star Finishing Trowels

Size	<u>ProForm® Handle</u> No.	<u>Wood Handle</u> No.	<u>Leather Handle</u> No.	<u>Cork Handle</u> No.
12"x4"	PLE462PF	PLE462	PLE462L	PLE462K
13"x4"	PLE463PF	PLE463	PLE463L	PLE463K
14"x4"	PLE464PF	PLE464	PLE464L	PLE464K
16"x4"	PLE465PF	PLE465	PLE465L	PLE465K



SIGNATURE CONCRETE FINISHING TROWELS



Professional Quality Precision Balanced Ready to Use

- Guaranteed NO-TURN handle design locks handle to mounting.
- Each blade is cross ground to just the right dimension for that perfect feel.
- Features a high-strength, lightweight cast aluminum mounting.
- Compression fit stainless steel rivets.
- Oversized toe rivet for extra strength.
- Comfortable ProForm® handle with contoured shape and an enhanced textured ribbing for a "GREAT GRIP."



ProForm®
Trowel Handle
(US Patent
#6,247,204 B1)

ProForm® handled trowel packaging features a unique open view box design and eye-catching graphics.



Carbon Steel

ProForm® Soft Grip Handle



No.	Size
CF201PF	10"x3"
CF202PF	10"x4"
CF207PF	11"x4"
CF211PF	12"x3"
CF212PF	12"x4"
CF216PF	14"x3"
CF215PF	14"x3-1/2"
CF217PF	14"x4"
CF218PF	14"x4-1/2"
CF219PF	14"x4-3/4"
CF534PF	14"x5"
CF221PF	16"x3"
CF220PF	16"x3-1/2"
CF222PF	16"x4"
CF223PF	16"x4-1/2"
CF224PF	16"x4-3/4"
CF535PF	16"x5"
CF226PF	18"x3"
CF225PF	18"x3-1/2"
CF227PF	18"x4"
CF228PF	18"x4-1/2"
CF229PF	18"x4-3/4"
CF546PF	18"x5"
CF231PF	20"x4"
CF232PF	20"x5"
CF550PF	22"x5"
CF233PF	24"x4"
CF234PF	24"x5"

Carbon Steel

Camel Back Wood Handle



No.	Size
CF201C	10"x3"
CF202C	10"x4"
CF207C	11"x4"
CF211C	12"x3"
CF212C	12"x4"
CF216C	14"x3"
CF215C	14"x3-1/2"
CF217C	14"x4"
CF218C	14"x4-1/2"
CF219C	14"x4-3/4"
CF534C	14"x5"
CF221C	16"x3"
CF220C	16"x3-1/2"
CF222C	16"x4"
CF223C	16"x4-1/2"
CF224C	16"x4-3/4"
CF535C	16"x5"
CF226C	18"x3"
CF225C	18"x3-1/2"
CF227C	18"x4"
CF228C	18"x4-1/2"
CF229C	18"x4-3/4"
CF546C	18"x5"
CF231C	20"x4"
CF232C	20"x5"
CF550C	22"x5"
CF233C	24"x4"
CF234C	24"x5"

Carbon Steel

Straight Wood Handle



No.	Size
CF201	10"x3"
CF202	10"x4"
CF207	11"x4"
CF211	12"x3"
CF212	12"x4"
CF216	14"x3"
CF215	14"x3-1/2"
CF217	14"x4"
CF218	14"x4-1/2"
CF219	14"x4-3/4"
CF221	16"x3"
CF220	16"x3-1/2"
CF222	16"x4"
CF223	16"x4-1/2"
CF224	16"x4-3/4"
CF226	18"x3"
CF225	18"x3-1/2"
CF227	18"x4"
CF228	18"x4-1/2"
CF229	18"x4-3/4"
CF231	20"x4"
CF232	20"x5"



FINISHING TROWELS



Golden Stainless Steel

- Special heat treatment for a flatter, longer-lasting blade
- Special alloy will not rust, pit, or stain

Camel Back Wood Handle

No.	Size
CF536	12"x4"
CF541	14"x4"
CF540	14"x4-3/4"
CF543	14"x5"
CF532	16"x3"
CF533	16"x4"
CF542	16"x4-1/2"
CF545	16"x5"
CF547	18"x4"
CF548	18"x5"
CF549	20"x5"

ProForm® Soft Grip Handle

No.	Size
CF536PF	12"x4"
CF541PF	14"x4"
CF540PF	14"x4-3/4"
CF543PF	14"x5"
CF532PF	16"x3"
CF533PF	16"x4"
CF542PF	16"x4-1/2"
CF545PF	16"x5"
CF547PF	18"x4"
CF548PF	18"x5"
CF549PF	20"x5"



Blue Steel

Round End Burn Trowel

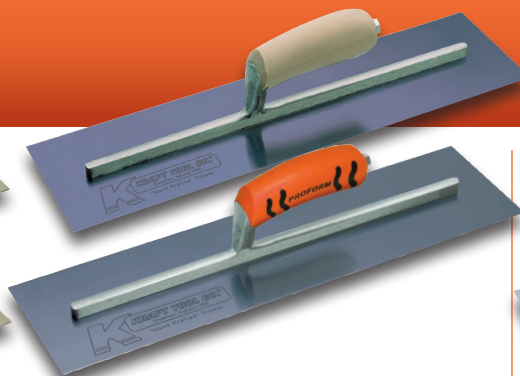
High quality blue steel. 3" rounded narrow blade with long shank. Allows finishers to apply pressure for a smooth, hard finish.

Camel Back Wood Handle

No.	Size
CF470	12"x3"
CF471	14"x3"

ProForm® Soft Grip Handle

No.	Size
CF470PF	12"x3"
CF471PF	14"x3"



Blue Steel

- High quality blue steel gives the blade additional flexibility

Camel Back Wood Handle

No.	Size
CF725B	10"x4"
CF726B	12"x3"
CF730B	12"x4"
CF727B	14"x3"
CF731B	14"x4"
CF732B	16"x4"
CF535B	16"x5"
CF729B	18"x4"
CF733B	18"x5"
CF728B	20"x4"
CF734B	20"x5"
CF743B	24"x4"
CF735B	24"x5"

ProForm® Soft Grip Handle

No.	Size
CF725BPF	10"x4"
CF726BPF	12"x3"
CF730BPF	12"x4"
CF727BPF	14"x3"
CF731BPF	14"x4"
CF732BPF	16"x4"
CF535BPF	16"x5"
CF729BPF	18"x4"
CF733BPF	18"x5"
CF728BPF	20"x4"
CF734BPF	20"x5"
CF743BPF	24"x4"
CF735BPF	24"x5"



Swedish Stainless Steel

- High quality, heat treated Swedish stainless steel
- Special alloy will not rust, pit, or stain

Camel Back Wood Handle

No.	Size
CF742	12"x4"
CF744	14"x4"
CF748	14"x4-3/4"
PL574	14"x5"
CF747	16"x4"
PL576	16"x5"

ProForm® Soft Grip Handle

No.	Size
CF742PF	12"x4"
CF744PF	14"x4"
CF748PF	14"x4-3/4"
PL574PF	14"x5"
CF747PF	16"x4"
PL576PF	16"x5"



Mini Pool Trowel

Carbon Steel

Finish hard-to-get places, wall forms, window sills and small areas. Rounded ends prevent gouging.

Camel Back Wood Handle

No.	Size
CF724	7-1/2"x4"

ProForm® Soft Grip Handle

No.	Size
CF724PF	7-1/2"x4"

Midget Trowel

Great for window sills, closets and small areas. Carry one in your tool bag for tough-to-reach jobs.

Carbon Steel

Camel Back Wood Handle

No.	Size
PL409	6-1/2"x5"
PL407	8"x3"
PL408	8"x5"

ProForm® Soft Grip Handle

No.	Size
PL409PF	6-1/2"x5"
PL407PF	8"x3"
PL408PF	8"x5"



Swedish Stainless Steel

Camel Back Wood Handle

No.	Size
PL406	8"x3"

ProForm® Soft Grip Handle

No.	Size
PL406PF	8"x3"



POOL TROWELS



Carbon Steel

Short Shank, Flexible Blade

- Rounded edges prevent surface gouging
- Short shank for flexibility

Camel Back Wood Handle

No.	Size	Shank
CF435	10"x3"	3"
CF436	12"x3-1/2"	4-3/8"
CF437	14"x4"	6"
CF438	16"x4"	7-7/8"
CF439	18"x5"	9-5/8"
CF440	20"x5"	11-5/8"
CF441	22"x4"	13-5/8"
CF442	24"x4"	13-5/8"
CF445	24"x5"	13-5/8"

ProForm® Soft Grip Handle

CF435PF	10"x3"	3"
CF436PF	12"x3-1/2"	4-3/8"
CF437PF	14"x4"	6"
CF438PF	16"x4"	7-7/8"
CF439PF	18"x5"	9-5/8"
CF440PF	20"x5"	11-5/8"
CF441PF	22"x4"	13-5/8"
CF442PF	24"x4"	13-5/8"
CF445PF	24"x5"	13-5/8"



Carbon Steel

Long Shank

- Rounded edges prevent surface gouging
- Longer shank creates a less flexible blade

Camel Back Wood Handle

No.	Size	Shank
CF429	12"x4"	9-5/8"
CF446	14"x4"	11-5/8"
CF447	16"x4"	13-5/8"
CF448	18"x4"	15-5/8"
CF450	18"x5"	15-5/8"
CF449	20"x4"	15-5/8"
CF451	20"x5"	15-5/8"

ProForm® Soft Grip Handle

CF429PF	12"x4"	9-5/8"
CF446PF	14"x4"	11-5/8"
CF447PF	16"x4"	13-5/8"
CF448PF	18"x4"	15-5/8"
CF450PF	18"x5"	15-5/8"
CF449PF	20"x4"	15-5/8"
CF451PF	20"x5"	15-5/8"



Blue Steel

Long Shank

- Rounded edges prevent surface gouging
- Longer shank creates a less flexible blade

Camel Back Wood Handle

No.	Size	Shank
CF721B	12"x4"	9-5/8"
CF736B	14"x4"	11-5/8"
CF737B	16"x4"	13-5/8"
CF742B	16"x5"	13-5/8"
CF738B	18"x4"	15-5/8"
CF739B	20"x4"	15-5/8"
CF740B	20"x5"	15-5/8"
CF741B	22"x4"	15-5/8"
CF745B	24"x4"	15-5/8"
CF746B	24"x5"	15-5/8"

ProForm® Soft Grip Handle

CF721BPF	12"x4"	9-5/8"
CF736BPF	14"x4"	11-5/8"
CF737BPF	16"x4"	13-5/8"
CF742BPF	16"x5"	13-5/8"
CF738BPF	18"x4"	15-5/8"
CF739BPF	20"x4"	15-5/8"
CF740BPF	20"x5"	15-5/8"
CF741BPF	22"x4"	15-5/8"
CF745BPF	24"x4"	15-5/8"
CF746BPF	24"x5"	15-5/8"



Swedish Stainless Steel

Short Shank, Flexible Blade

- Rounded edges prevent surface gouging
- Short shank for flexibility

Camel Back Wood Handle

No.	Size	Shank
CF325	10"x3"	3"
CF326	12"x3-1/2"	4-3/8"
CF329	14"x3"	6"
CF327	14"x4"	6"
CF330	16"x3"	7-7/8"
CF328	16"x4"	7-7/8"
CF344	18"x4"	9-5/8"

ProForm® Soft Grip Handle

CF325PF	10"x3"	3"
CF326PF	12"x3-1/2"	4-3/8"
CF329PF	14"x3"	6"
CF327PF	14"x4"	6"
CF330PF	16"x3"	7-7/8"
CF328PF	16"x4"	7-7/8"
CF344PF	18"x4"	9-5/8"



Blue Steel

Short Shank, Flexible Blade

- Rounded edges prevent surface gouging
- Short shank for flexibility

Camel Back Wood Handle

No.	Size	Shank
CF274B	10"x3"	3"
CF271B	12"x3"	4-3/8"
CF276B	12"x3-1/2"	4-3/8"
CF275B	12"x4"	4-3/8"
CF272B	14"x3"	6"
CF277B	14"x4"	6"
CF273B	16"x3"	7-7/8"
CF279B	16"x4"	7-7/8"
CF290B	16"x4-1/2"	7-7/8"
CF280B	16"x5"	9-5/8"
CF291B	18"x4-1/2"	9-5/8"
CF292B	18"x5"	9-5/8"
CF293B	20"x4"	11-5/8"
CF295B	20"x5"	11-5/8"
CF296B	22"x5"	13-5/8"
CF297B	24"x5"	13-5/8"

ProForm® Soft Grip Handle

CF274BPF	10"x3"	3"
CF271BPF	12"x3"	4-3/8"
CF276BPF	12"x3-1/2"	4-3/8"
CF275BPF	12"x4"	4-3/8"
CF272BPF	14"x3"	6"
CF277BPF	14"x4"	6"
CF273BPF	16"x3"	7-7/8"
CF279BPF	16"x4"	7-7/8"
CF290BPF	16"x4-1/2"	7-7/8"
CF280BPF	16"x5"	9-5/8"
CF291BPF	18"x4-1/2"	9-5/8"
CF292BPF	18"x5"	9-5/8"
CF293BPF	20"x4"	11-5/8"
CF295BPF	20"x5"	11-5/8"
CF296BPF	22"x5"	13-5/8"
CF297BPF	24"x5"	13-5/8"



Golden Stainless Steel

Short Shank, Flexible Blade

- Special heat treatment for a flatter, longer-lasting blade
- Rounded edges prevent surface gouging
- Short shank for flexibility

Camel Back Wood Handle

No.	Size	Shank
CF274	10"x3"	3"
CF276	12"x3-1/2"	4-3/8"
CF277	14"x4"	6"
CF279	16"x4"	7-7/8"

ProForm® Soft Grip Handle

CF274PF	10"x3"	3"
CF276PF	12"x3-1/2"	4-3/8"
CF277PF	14"x4"	6"
CF279PF	16"x4"	7-7/8"



Chrome (No Burn)

Exposed Rivets for Extra Strength

- Extra hard troweling blade for long wear
- Short shank for flexibility
- Eliminates burn marks
- The hardened chrome surface is great for pool work

Camel Back Wood Handle

No.	Size	Shank
CF490	10"x3"	3"
CF491	12"x3-1/2"	4"
CF492	14"x3"	6"
CF493	14"x4"	6"
CF494	16"x3"	7-7/8"

ProForm® Soft Grip Handle

CF490PF	10"x3"	3"
CF491PF	12"x3-1/2"	4"
CF492PF	14"x3"	6"
CF493PF	14"x4"	6"
CF494PF	16"x3"	7-7/8"



Blue Steel

Round Front Square Back

- Round front minimizes trowel marks
- Square back allows trowel to get close to forms

Camel Back Wood Handle

No.	Size
CF213B	10"x4"
CF214B	12"x4"
CF284B	14"x4"
CF285B	16"x4"
CF230B	16"x5"
CF343B	18"x5"

ProForm® Soft Grip Handle

CF213BPF	10"x4"
CF214BPF	12"x4"
CF284BPF	14"x4"
CF285BPF	16"x4"
CF230BPF	16"x5"
CF343BPF	18"x5"



Carbon Steel

Round Front Square Back

- Round front minimizes trowel marks
- Square back allows trowel to get close to forms

Camel Back Wood Handle

No.	Size
CF428	10"x4"
CF284	14"x4"
CF285	16"x4"
CF286	18"x4"
CF343	18"x5"
CF287	20"x4"
CF288	20"x5"
CF340	22"x4"
CF341	22"x5"
CF342	24"x5"

ProForm® Soft Grip Handle

CF428PF	10"x4"
CF284PF	14"x4"
CF285PF	16"x4"
CF286PF	18"x4"
CF343PF	18"x5"
CF287PF	20"x4"
CF288PF	20"x5"
CF340PF	22"x4"
CF341PF	22"x5"
CF342PF	24"x5"

PLASTER TROWELS



Carbon Steel

- Strong carbon steel blade
- Longer shank creates a stiffer blade

Camel Back Wood Handle

No.	Size	Shank
PL425	10-1/2"x4-1/2"	9-5/8"
PL451	11"x4-1/2"	9-5/8"
PL447	11"x4-3/4"	9-5/8"
PL456	11-1/2"x4-1/2"	9-5/8"
PL448	11-1/2"x4-3/4"	9-5/8"
PL468	12"x5"	9-5/8"
PL470	13"x5"	11-5/8"

ProForm® Soft Grip Handle

PL425PF	10-1/2"x4-1/2"	9-5/8"
PL451PF	11"x4-1/2"	9-5/8"
PL447PF	11"x4-3/4"	9-5/8"
PL456PF	11-1/2"x4-1/2"	9-5/8"
PL448PF	11-1/2"x4-3/4"	9-5/8"
PL468PF	12"x5"	9-5/8"
PL470PF	13"x5"	11-5/8"

Golden Stainless Steel

- Special heat treatment for a flatter, longer-lasting blade
- Special alloy will not rust, pit, or stain

Camel Back Wood Handle

No.	Size	Shank
PL452	10-1/2"x4-1/2"	9-5/8"
PL454	11"x4-1/2"	9-5/8"
PL455	11"x4-3/4"	9-5/8"
PL453	11-1/2"x4-1/2"	9-5/8"
PL449	11-1/2"x4-3/4"	7-7/8"
PL457	11-1/2"x4-3/4"	9-5/8"
PL458	12"x5"	7-7/8"
PL459	12"x5"	9-5/8"
PL461	13"x5"	7-7/8"
PL460	13"x5"	11-5/8"
CF544	14"x5"	9-5/8"
PL462	16"x5"	9-5/8"

ProForm® Soft Grip Handle

PL452PF	10-1/2"x4-1/2"	9-5/8"
PL454PF	11"x4-1/2"	9-5/8"
PL455PF	11"x4-3/4"	9-5/8"
PL453PF	11-1/2"x4-1/2"	9-5/8"
PL449PF	11-1/2"x4-3/4"	7-7/8"
PL457PF	11-1/2"x4-3/4"	9-5/8"
PL458PF	12"x5"	7-7/8"
PL459PF	12"x5"	9-5/8"
PL461PF	13"x5"	7-7/8"
PL460PF	13"x5"	11-5/8"
CF544PF	14"x5"	9-5/8"
PL462PF	16"x5"	9-5/8"



Swedish Stainless Steel

- Heat treated Swedish stainless steel
- Special alloy will not rust, pit, or stain

Camel Back Wood Handle

No.	Size	Shank
PL525	10-1/2"x4-1/2"	9-5/8"
PL551	11"x4-1/2"	9-5/8"
PL547	11"x4-3/4"	9-5/8"
PL556	11-1/2"x4-1/2"	9-5/8"
PL548	11-1/2"x4-3/4"	9-5/8"
PL568	12"x5"	9-5/8"
PL570	13"x5"	11-5/8"
PL574	14"x5"	11-5/8"
PL576	16"x5"	13-5/8"

ProForm® Soft Grip Handle

PL525PF	10-1/2"x4-1/2"	9-5/8"
PL551PF	11"x4-1/2"	9-5/8"
PL547PF	11"x4-3/4"	9-5/8"
PL556PF	11-1/2"x4-1/2"	9-5/8"
PL548PF	11-1/2"x4-3/4"	9-5/8"
PL568PF	12"x5"	9-5/8"
PL570PF	13"x5"	11-5/8"
PL574PF	14"x5"	11-5/8"
PL576PF	16"x5"	13-5/8"





Silo Trowel

Carbon Steel Rounded Corner

Finish hard-to-reach places. Four special rounded corners (1/2" radius) prevents digging on slab.

Camel Back Wood Handle

No.	Size
CF332	14"x4"
CF333	16"x4"

ProForm® Soft Grip Handle

No.	Size
CF332PF	14"x4"
CF333PF	16"x4"



Carbon Steel Pipe Trowel

Finish hard-to-get places quickly and easily. The offset handle lets you slip the trowel between pipes: the long nose makes it easy to get behind fixtures.

Camel Back Wood Handle

No.	Size
PL501	10-1/2"x3"

ProForm® Soft Grip Handle

No.	Size
PL501PF	10-1/2"x3"



Plexi-Plastic Trowels

Plexi-plastic trowel has an aluminum mounting and is made from a special plastic for better wear. It is used on white portland, interior stucco, swimming pools and on special projects requiring trowels that will not blacken material.

Round End

Camel Back Wood Handle

No.	Size
PL610	10"x3"
PL612	12"x3-1/2"
PL614	14"x4"
PL616	16"x4"

ProForm® Soft Grip Handle

No.	Size
PL610PF	10"x3"
PL612PF	12"x3-1/2"
PL614PF	14"x4"
PL616PF	16"x4"

Square End

Camel Back Wood Handle

No.	Size
PL658	11"x4-1/2"

ProForm® Soft Grip Handle

No.	Size
PL658PF	11"x4-1/2"



Venetian Trowel

Trapezoid shape broken-in stainless steel finish trowels. Designed for finishing and polishing decorative plaster and stucco. Machined edge with smooth bright finish.

ProForm® Soft Grip Handle

No.	Size
PL627PF	8"x3"
	203mmx76mm (small)
PL628PF	9-1/2"x3-1/2"
	241mmx89mm (med.)

Camel Back Wood Handle

No.	Size
PL627	8"x3"
	203mmx76mm (small)
PL628	9-1/2"x3-1/2"
	241mmx89mm (med.)

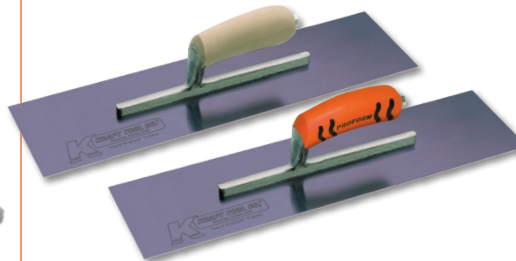
View More Plaster Tools Pages 134-141

Hawks, Floats, Darbies, Corner Tools,
Rasps, Scarifiers, and Much More



Flexible Radius Trowels

The high grade steel blade easily flexes to various radii. Fewer rivets create a wider range of motion for the blade. High-strength, short shank aluminum mountings provides additional flexibility to work surface while maintaining control.



Finishing Trowels Blue Steel

Camel Back Wood Handle

No.	Size	Rivets
CF731B-5R	14"x4"	5
CF729B-10R	18"x4"	10

ProForm® Soft Grip Handle

No.	Size	Rivets
CF731BPF-5R	14"x4"	5
CF729BPF-10R	18"x4"	10



Pool Trowels

Blue Steel

Camel Back Wood Handle

No.	Size	Rivets
CF277B-5R	14"x4"	5
CF279B-5R	16"x4"	5
CF738B-6R	18"x4"	6

ProForm® Soft Grip Handle

No.	Size	Rivets
CF277BPF-5R	14"x4"	5
CF279BPF-5R	16"x4"	5
CF738BPF-6R	18"x4"	6

Carbon Steel (not shown)

Camel Back Wood Handle

No.	Size	Rivets
CF437-5R	14"x4"	5
CF438-5R	16"x4"	5
CF448-6R	18"x4"	6

ProForm® Soft Grip Handle

No.	Size	Rivets
CF437PF-5R	14"x4"	5
CF438PF-5R	16"x4"	5
CF448PF-6R	18"x4"	6

Trowel Bracket

When used with a standard fresno handle, these steel brackets turn a normal concrete finishing trowel into a small fresno, for longer reach when finishing. Just remove handle and add bracket to trowel. ***Fits on all Kraft finishing trowels and can be used with clevis handle adapters.*** (order parts separately).

No.	Description
CC657	Single Action Bracket
CC658	Swivel Action Bracket



Single
Action



Swivel
Action

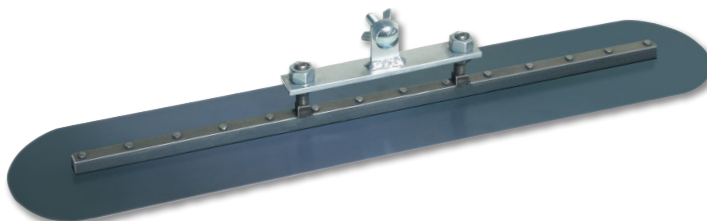
Finishing trowel, adapter, and extension handle sold separately



Funny Trowel

Blue steel blade with clevis handle bracket (CC661) for back and forth mopping style movements. 1/2" square bar centered on blade for flatness and strength. Ideal tool for extended reach when finishing under overhangs and around other obstructions. Add an adapter for use with bull float handles (page 22-24).

No.	Size
CC624F	24"x5"



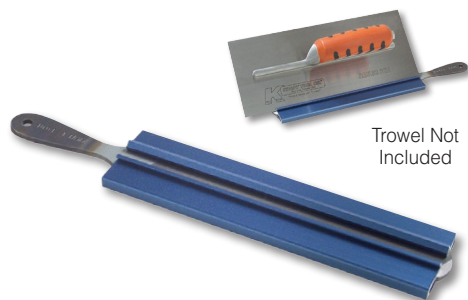
Funny Trowel
Replacement
Bracket
CC661



Trowel Sharpener

Keeps edges sharp. Ideal tool for eliminating small nicks and dull edges of finishing trowels.

No. CF200



Trowel Not
Included

Mini Mag Float

Extra lightweight extruded magnesium wall float. Great tool for floating in small areas, stairs or top of wall between forms. Fitted with ProForm® handle. Blade measures 7-1/2"x3-1/4".

No. CF663PF



Replacement Trowel Handles

ProForm® Soft Grip Handle

No.	Description
CF053	ProForm® Handle

Wood Handles

No.	Description
CF051	Camel Back Handle
CF052	Straight Handle



ProForm®



Camel Back



Straight

Replacement Float Handles

- A) 10" Wood Float Handle
No. CF261
- B) 10" Wood Drilled Countersunk Handle
No. CF262
- C) 10" Wood High Lift Float Handle
No. CF050



A



B



C



D



E

- D) 7-1/4" Replacement Handle
For Rubber Floats

- No. CF263 7-1/4" Wood Float Handle
- No. CF263P 7-1/4" Plastic Float Handle
(not shown)
- E) 10" Wood Replacement Handle with
Larger Diameter
No. CF265

Soft textured ProForm® Handle with special ribbing for that "Great Grip"

- F) 10" ProForm® Soft Grip Float Handle
No. CF266
- G) 10" ProForm® Soft Grip Handle for
MAG-150™ and ThinLine Floats
No. CF266CB



F

G





MAG HAND FLOATS

GENUINE EXTRU-LITE™
MAGNESIUM

Professional Quality Mag Floats

Tough durable Extru-Lite Magnesium™ blade offers superb floating action
Float ends are beveled and the blade is "broken-in" with rounded corners
Precise handle position gives perfect balance



Square End Mag Float

ProForm® Handle

No.	Size
CF012PF	12"x3-1/4"
CF014PF	14"x3-1/4"
CF016PF	16"x3-1/4"
CF018PF	18"x3-1/4"
CF020PF	20"x3-1/4"
CF024PF	24"x3-1/4"

Standard Wood Handle

No.	Size
CF012	12"x3-1/4"
CF014	14"x3-1/4"
CF016	16"x3-1/4"
CF016NP	16"x3-1/4" (No Paint)
CF018	18"x3-1/4"
CF020	20"x3-1/4"
CF024	24"x3-1/4"

High Lift Wood Handle

No.	Size
CF012M	12"x3-1/4"
CF014M	14"x3-1/4"
CF016M	16"x3-1/4"
CF018M	18"x3-1/4"
CF020M	20"x3-1/4"
CF024M	24"x3-1/4"

Round End Mag Float

ProForm® Handle

No.	Size
CF072PF	12"x3-1/4"
CF076PF	16"x3-1/4"
CF074PF	18"x3-1/4"
CF075PF	20"x3-1/4"

High Lift Wood Handle

No.	Size
CF072	12"x3-1/4"
CF076	16"x3-1/4"
CF074	18"x3-1/4"
CF075	20"x3-1/4"

Round Front Square Back Mag Float

ProForm® Handle

No.	Size
CF078PF	16"x3-1/4"

Standard Wood Handle

No.	Size
CF078	16"x3-1/4"

Narrow Magnesium Hand Float

Extru-Lite™ Magnesium hand float features a narrow blade design for hard-to-reach places. It is also popular for curb work.

Square End

Wood No.	ProForm® No.	Size
CF070	CF070PF	16"x2-1/4"

Round End (not shown)

Wood No.	ProForm® No.	Size
CF070RE	CF070PFRE	16"x2-1/4"



Hand Float Handle Risers

Increase the room for your knuckles by 1/4". Fits on all extruded magnesium hand floats with ProForm® soft grip handles. Stack multiple risers for even more space. Durable plastic construction. Includes 1 pair of risers and hardware.

No. CF057 (pair)



Allows .25"
more knuckle
clearance room



Hand Float Not Included

ThinLine Pro Mag Float

Cast Magnesium

- Tough, durable cast magnesium blade
- Thin edges and smooth rounded corners gives this float that perfect "broken-in" feel
- Precise handle position provides a perfect balance
- Float design allows for greater knuckle clearance in **large diameter wood handle**.

Also available with ProForm® soft grip handle.

Square End

Wood Handle

No. Size
CF064 16"x3-1/8"

ProForm® Handle

No. Size
CF064PF 16"x3-1/8"

Round End **NEW**

Wood Handle

No. Size
CF064RE 16"x3-1/8"

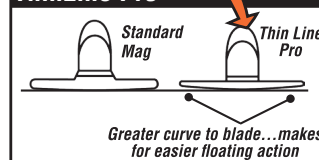
ProForm® Handle

No. Size
CF064PFRE 16"x3-1/8"



COMPARE BLADES

ThinLine Pro



MAG-150™ Float

Cast Magnesium

- Tough, durable cast magnesium blade
- Great "broken-in" feel with beveled ends
- **Larger diameter wood handle** allows for improved user control with more knuckle room.

Also available with ProForm® soft grip handle

Square End

Wood Handle

No. Size
CF150 16"x3-1/2"

ProForm® Handle

No. Size
CF150PF 16"x3-1/2"

Round End **NEW**

Wood Handle

No. Size
CF150RE 16"x3-1/2"

ProForm® Handle

No. Size
CF150PFRE 16"x3-1/2"



Wide Mag Float

Extruded Magnesium

- Tough, durable 3-1/2" Extruded Magnesium™ blade
- Precise handle position gives the float perfect balance and superb floating action
- Beveled edges and smooth rounded corners gives this float that perfect "broken-in" feel

Standard Wood Handle

No. Size
CF015 16"x3-1/2"

High Lift Wood Handle

No. Size
CF015M 16"x3-1/2"

ProForm® Handle

No. Size
CF015PF 16"x3-1/2"



GENUINE EXTRU-LITE™
MAGNESIUM

Sand Cast Mag Float

"The Original"

- Tough, durable long-wearing sand cast magnesium blade
- Made the same as it was fifty years ago
- Precise handle position gives the float perfect balance and superb floating action
- Comfortable large diameter wood handle
- Corners rounded and both ends beveled

Large Diameter Wood Handle

No. Size
CF066 16"x3-1/4"



Redwood Float

Top quality clear heart redwood float with comfortable wood handle. This lightweight float is easy to work with on outdoor projects. You'll have many uses for these two popular sizes, both 5/8" thick.

No.	Size
CF251	12"x5"
CF252	15"x5"



Laminated Canvas-Resin Float

Wears like magnesium for extremely long life. Popular choice for opening pores to work in color hardener. Laminated canvas-resin is 3/8" thick with broken-in face. Ready to use.

A) Round Ends

Wood Handle

No.	Size
CF501	16"x3-1/2"
CF502	18"x3-1/2"
CF524	20"x3-1/2"

ProForm® Handle

No.	Size
CF501PF	16"x3-1/2"
CF502PF	18"x3-1/2"
CF524PF	20"x3-1/2"



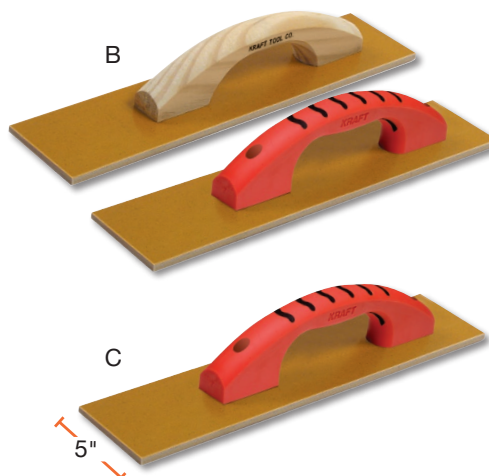
B) Square Ends

Wood Handle

No.	Size
CF503	12"x3-1/2"
CF504	14"x3-1/2"
CF505	16"x3-1/2"
CF506	18"x3-1/2"
CF507	20"x3-1/2"

ProForm® Handle

No.	Size
CF503PF	12"x3-1/2"
CF504PF	14"x3-1/2"
CF505PF	16"x3-1/2"
CF506PF	18"x3-1/2"
CF507PF	20"x3-1/2"



C) Wide Sizes

Wood Handle

No.	Size
CF529	12"x5"
CF530	14"x5"
CF531	16"x5"

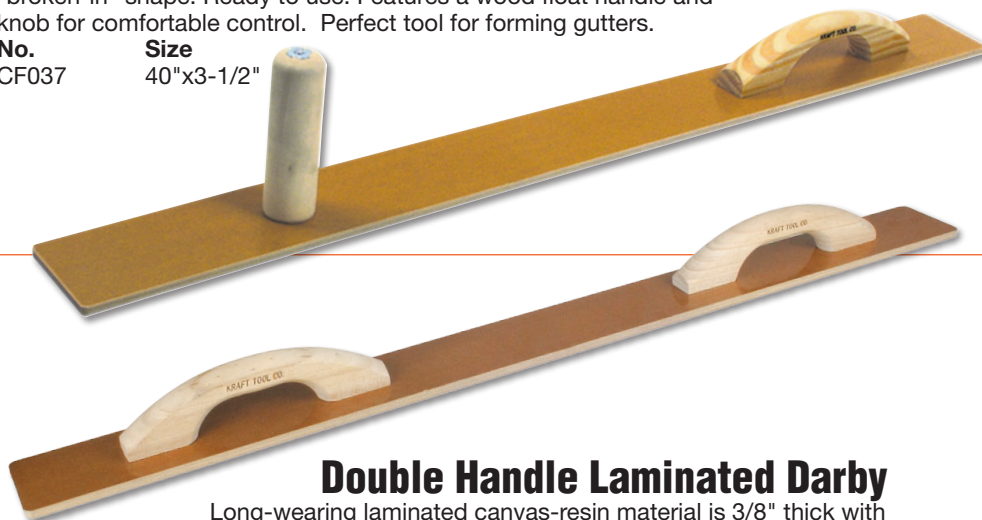
ProForm® Handle

No.	Size
CF529PF	12"x5"
CF530PF	14"x5"
CF531PF	16"x5"

Laminated Canvas-Resin Darby

Quickly covers more area than a regular float. Long-wearing laminated canvas-resin is 3/8" thick; has rounded corners and a "broken-in" shape. Ready to use. Features a wood float handle and knob for comfortable control. Perfect tool for forming gutters.

No.	Size
CF037	40"x3-1/2"



Double Handle Laminated Darby

Long-wearing laminated canvas-resin material is 3/8" thick with rounded corners for a "broken-in" shape. Ready to use. Two wooden float handles allow for comfortable movements. Ideal for working color hardeners into decorative projects.

No.	Size
CF238	40"x3-1/2"

HAND FLOATS

Beveled Redwood Float

Made of the best quality clear heart redwood. The float face is beveled to make it possible to work in the tightest areas. A popular choice for floating in color hardeners and on other decorative applications. 5/8" thick blade.

No.	Size
CF256	15"x3-1/2"
CF257	18"x3-1/2"



Bodark Wood Float

Bodark floats outlast ordinary floats. Handle is bonded and screwed into 1/2" thick blade for secure hold. Popular float with many finishers.

Wood Handle

No.	Size
CF642	16"x2-1/4"
CF643	16"x3"
CF644	20"x3"

ProForm® Handle

No.	Size
CF642PF	16"x2-1/4"
CF643PF	16"x3"
CF644PF	20"x3"



Teakwood Float

Very hard, long wearing 5/8" thick float. Comes with 10" float handle.

No.	Size
CF269	18"x3-1/4"



Float Hook

Float hook clips to belt. Holds hand floats and other tools.

No.
CF011



Elite Series™ HAND FLOATS

Elite Series™ ThinLine Pro Mag Float

Cast Magnesium

- Tough, durable cast magnesium blade
- Uniquely ground edges and smooth rounded corners gives this float that perfect "broken-in" feel
- Precise handle position provides a perfect balance
- Popular, ergonomic moisture-wicking cork handle

Square End Cork Handle

No. CFE064K Size 16"x3-1/8"

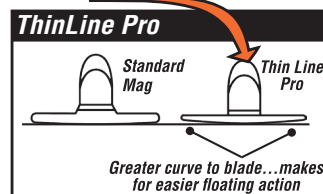
Round End Cork Handle

No. CFE064REK Size 16"x3-1/8"



NEW

COMPARE BLADES



Elite Series™ MAG-150™ Float

Cast Magnesium

- Tough, durable cast magnesium blade
- Uniquely ground edges give the blade a "broken-in" feel with beveled ends
- Widest Elite Series™ magnesium hand float
- Popular, ergonomic moisture-wicking cork handle

Square End Cork Handle

No. CFE150K Size 16"x3-1/2"

Round End Cork Handle

No. CFE150REK Size 16"x3-1/2"



NEW

Elite Series™ Tapered Magnesium Darby

Premium lightweight Magnesium Darby has a tapered design for ease in moving across concrete with a sweeping motion. The extruded blade is 3-1/8" wide at the heel, tapered to 1-7/8" at the toe. A distinct grind on the working surface is broken-in and ready for use. Comes complete with Kraft Tool's unique, ergonomic cork handle.

Cork Handle

No. CFE030K Size 30"



NEW



GENUINE EXTRU-LITE™
MAGNESIUM

Elite Series™ Cork Float Handle *Patent Pending*

- Secure, precisely balanced Cork Handle provides a comfortable grip
- Wicks moisture away for a firm grip without chafing and slipping



GENUINE EXTRU-LITE™
MAGNESIUM

Blade
Detail

Elite Series™ ★★★★★ Five Star Mag Hand Floats

Each of the new Five Star Elite Series™ magnesium hand floats has a distinct grind on the working surface that gives concrete a smooth professional look. The special ground blade features rounded corners to leave fewer marks. Beveled edges and a unique surface gives a "broken-in" feel for immediate use. All Elite Series™ Magnesium Floats come complete with a cork handle.

Square End Mag Float *Cork Handle*

No.	Size
CFE012K	12"x3-1/4"
CFE014K	14"x3-1/4"
CFE016K	16"x3-1/4"
CFE018K	18"x3-1/4"
CFE020K	20"x3-1/4"
CFE024K	24"x3-1/4"

Round End Mag Float *Cork Handle*

No.	Size
CFE072K	12"x3-1/4"
CFE076K	16"x3-1/4"
CFE074K	18"x3-1/4"
CFE075K	20"x3-1/4"

Elite Series™ ★★★★★ Laminated Canvas-Resin Floats

Wears like magnesium for extremely long life. Laminated canvas-resin is 3/8" thick with broken-in face. Ready to use. Floats come complete with a cork handle.



Round End Float

Cork Handle

No.	Size
CFE501K	16"x3-1/2"
CFE502K	18"x3-1/2"
CFE524K	20"x3-1/2"

Square End Float

Cork Handle

No.	Size
CFE503K	12"x3-1/2"
CFE504K	14"x3-1/2"
CFE505K	16"x3-1/2"
CFE506K	18"x3-1/2"
CFE507K	20"x3-1/2"

Wide Size Float

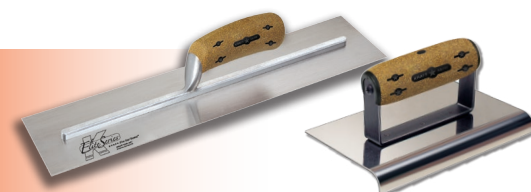
Cork Handle

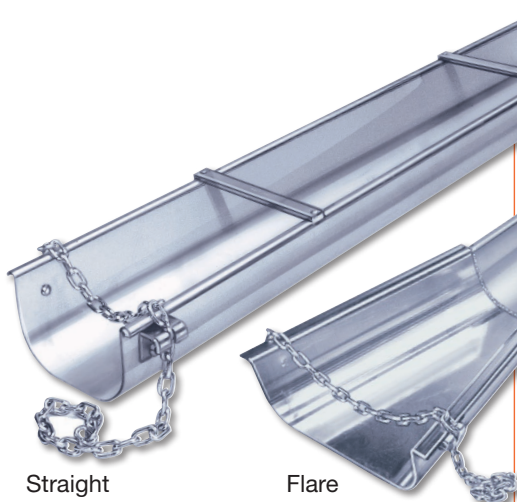
No.	Size
CFE529K	12"x5"
CFE530K	14"x5"
CFE531K	16"x5"

See More Elite Series™ Tools

Concrete and Plaster Finishing Trowels
Hand Edgers, Groovers, and Step Tools

Pages 4-6
Pages 52-54





Straight

Flare



Aluminum Concrete Chutes

Extruded aluminum one-piece concrete chutes. Lightweight and welded for extra strength. Welded flat bar braces across the top of each chute. Includes chain for attaching to truck. Available straight or with flare.

No.	Size	Weight
CC988**	8'	42 lbs.
CC992**	12'	75 lbs.
CC996**	16'	98 lbs.
CC999**	20'	120 lbs.

**Must ship via truck

Add "F" after part no. for flared chute

Concrete Chute Tool

Sturdy, lightweight and made of 1/8" aircraft aluminum. Blade size is 10"x7-1/2" and the radius will fit most chutes. Comes with 54" shovel-type wood handle (CC107).

No.	Description
CC987	Not Assembled
CC987ASM**	Assembled

**Must ship via oversized rate or truck



US PATENT
#6,412,569

A

B

Easy Mixer Concrete Hoe

Great tool for mixing concrete fast in wheelbarrows, backhoe buckets and other mixing containers. Patented forged head easily mixes 60 to 90 lb. bags of concrete in less than a minute. Special design creates minimum splash with 50% less drag. Great in corners. Open bag with point of hoe. 7-1/2"x6" blade.

No.	Description
A) CC211	Easy Mixer Concrete Hoe with 60" Handle
B) CC212	Easy Mixer Concrete Hoe with 21" Handle

Concrete Chute Hand Tool

Pull the last of the concrete down. Similar to our popular Concrete Chute Tool. Made out of lightweight 1/8" aircraft aluminum. The 10"x7-1/2" blade is rounded to fit most chutes. Attached to a 16" handle with a comfortable rubber grip.

No. CC987H



Tie Wire Reel

Lightweight but strong. Will not chip, crack or break. Highly visible safety yellow plastic. Fits any standard belt.

No. GG309



Metal Tie Wire Reel

Made of strong lightweight aluminum. Will not chip, crack or break. Easy turn handle. Fits any standard belt.

No. GG311



Channellock® Ironworker's Pliers

Wire cutting plier for tying concrete reinforcing bars. Bevel nose design plus long curved handles. Hand honed cutting edge. Plastic-dipped grips.

No.	Length
GG517	9"



Professional Tie Wire Twister

Special loop hook designed to twist wire bar ties with a minimum of effort. Lets you do the job right, quickly and safely. Fitted with 4-1/4" wood handle.

No. GG310



Economy Tie Wire Twister

Designed to twist wire bar ties with a minimum of effort. Plated hook for long wear. Fitted with 4" contoured plastic handle.

No. GG312*



Tie Wire Twister

Two or three pulls of the handle turns the hardened steel hook within its socket, to twist rebar ties. Spring loaded return. Designed for rough treatment. Rubber coated 12" ribbed handle for firm grip.

No. GG325*

