

TECHNICAL SUPPORT MANUAL

Fan Coils

FXM4X

Safety Labeling and Signal Words

DANGER, WARNING, CAUTION, and NOTE

The signal words **DANGER**, **WARNING**, **CAUTION**, and **NOTE** are used to identify levels of hazard seriousness. The signal word **DANGER** is only used on product labels to signify an immediate hazard. The signal words **WARNING**, **CAUTION**, and **NOTE** will be used on product labels and throughout this manual and other manuals that may apply to the product.

DANGER – Immediate hazards which **will** result in severe personal injury or death.

WARNING – Hazards or unsafe practices which **could** result in severe personal injury or death.

CAUTION – Hazards or unsafe practices which **may** result in minor personal injury or product or property damage.

NOTE – Used to highlight suggestions which **will** result in enhanced installation, reliability, or operation.

Signal Words in Manuals

The signal word **WARNING** is used throughout this manual in the following manner:



The signal word **CAUTION** is used throughout this manual in the following manner:



Signal Words on Product Labeling

Signal words are used in combination with colors and/or pictures on product labels.

TABLE OF CONTENTS

Model Number Identification	2
Wiring Diagram	3
Parts List	4 – 9
Exploded Drawings	10 – 13
Airflow Charts	14 – 15

MODELS

FXM4X1800A1	FXM4X1800AT1
FXM4X2400A1	FXM4X2400AT1
FXM4X3000A1	FXM4X3000AT1
FXM4X3600A1	FXM4X3600AT1
FXM4X4200A1	FXM4X4200AT1
FXM4X4800A1	FXM4X4800AT1
FXM4X6000A1	FXM4X6000AT1

ELECTRICAL SHOCK HAZARD

Failure to turn off electric power could result in personal injury or death.

Before installing or servicing system, turn off main power to the system. There may be more than one disconnect switch, including accessory heater(s).

FAN COIL MODEL NUMBER IDENTIFICATION GUIDE

		F	X	M	4	X	1800	A	T
F = Fan Coil		MOTOR TYPE		INSTALLATION TYPE		REFRIGERANT		METERING DEVICE	
X = High efficiency ECM									
M = Multiposition									
4 = Environmentally Sound R-410A									
X = TXV									
1800 = 18,000 BTUH = 1½ tons									
2400 = 24,000 BTUH = 2 tons									
3000 = 30,000 BTUH = 2½ tons									
3500 & 3600 = 36,000 BTUH = 3 tons									
4200 = 42,000 BTUH = 3½ tons									
4800 = 48,000 BTUH = 4 tons									
6000 = 60,000 BTUH = 5 tons									
								NOMINAL CAPACITY	
A = Standard									
AT = Tin Coated Copper Tube Coils								SALES CODE / FEATURES	

ACCESSORIES PART NUMBER IDENTIFICATION GUIDE

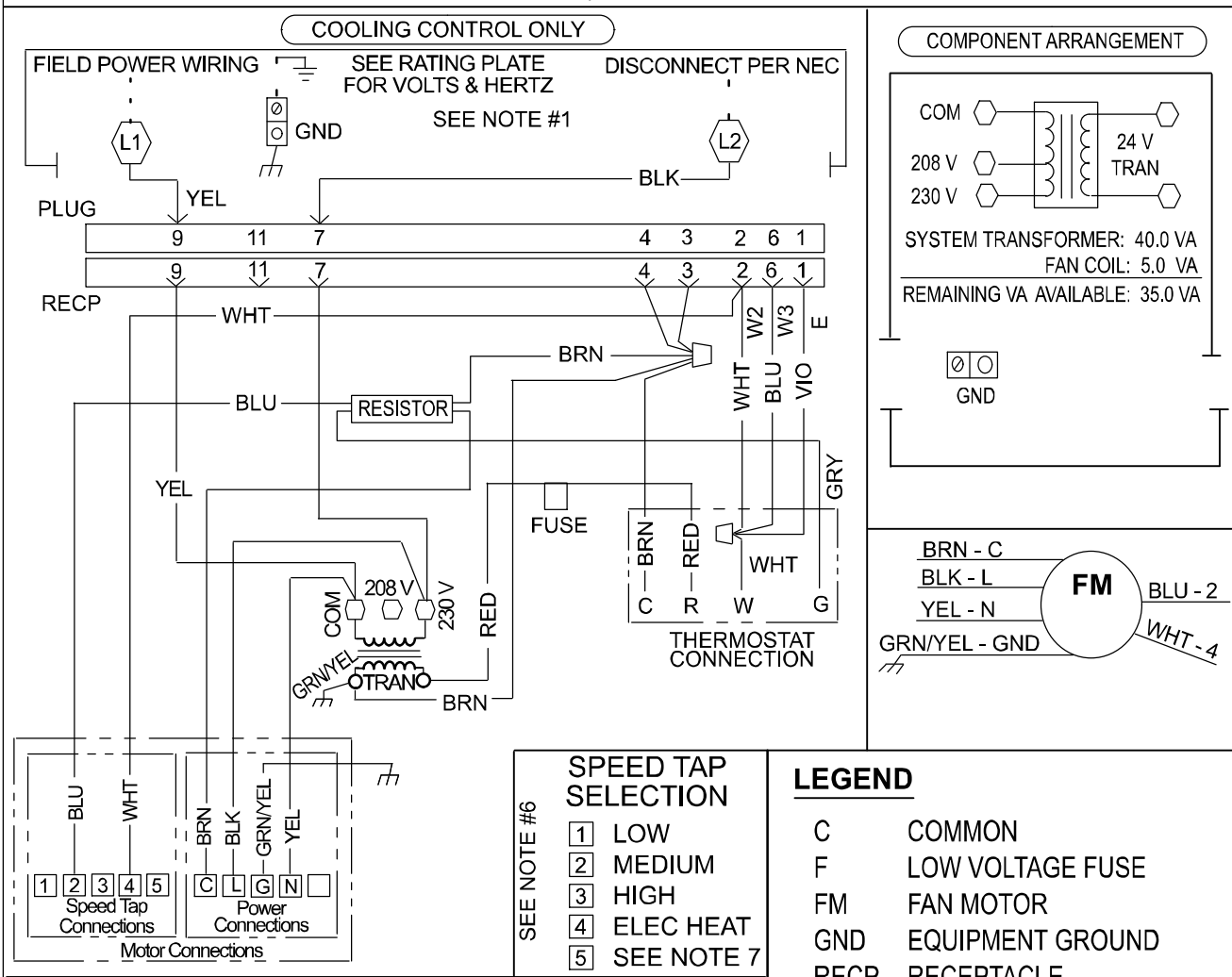
		EB	AC	01	NCB	A
EB = Evaporator Blower						
AC = Accessory						
01 = Product Identifier Number						
NCB = Non-Combustible Base Kit						
DFK = Down Flow Kit						
PLG = Power Plug (no heat kit)						
SPK = Single Point Wiring Kit						
FKS = Filter Kit Small						
FKM = Filter Kit Medium						
FKL = Filter Kit Large						
FKX = Filter Kit Extra Large						
CTK = Condensate Trap Kit (PVC pipe)						
Sales Code						

ELECTRIC HEATER MODEL NUMBER IDENTIFICATION GUIDE

		EHK	05	A	K	N	1
EHK = Electric Heater Kit							
05 = 5 kW							
07 = 7 kW							
09 = 9 kW							
10 = 10 kW							
15 = 15 kW							
18 = 18 kW							
20 = 20 kW							
25 = 25 kW							
30 = 30 kW							
						NOMINAL HEAT VALUE	
Sales Code							
K = 208 / 230 single-phase							
H = 208 / 230, 3-phase							
KC = 208 / 230, supplied as single phase, field convertible to 3-phase							
HC = 208 / 230 supplied as 3-phase, field convertible to single phase						VOLTAGE (60 Hz)	
Product Identifier							
Engineering Code							

THIS COMPARTMENT MUST BE CLOSED EXCEPT FOR SERVICING

BLOWER MOTOR ROTATION



- NOTES**
1. Use Copper Wire (75°C Min) Only Between Disconnect Switch And Unit.
 2. To Be Wired In Accordance With NEC And Local Codes.
 3. If Any Of The Original Wire, As Supplied, Must Be Replaced. Use The Same Or Equivalent Type Wire.
 4. Replace Low Voltage Fuse With No Greater Than 5 Amp Fuse.
 5. Connect R To R, G To G, Etc. See Outdoor Instruction For Details.
 6. To change speed tap, move blue wire to desired terminal.
 7. See airflow tables for tap usage.

SPEED TAP SELECTION

1	LOW
2	MEDIUM
3	HIGH
4	ELEC HEAT
5	SEE NOTE 7

SEE NOTE #6

LEGEND

- C COMMON
- F LOW VOLTAGE FUSE
- FM FAN MOTOR
- GND EQUIPMENT GROUND
- RECP RECEPTACLE
- SPT FAN SPEED TAP LOCATION
- TRAN TRANSFORMER
- UNMARKED TERMINAL
- - - FIELD POWER WIRING
- ◻ MARKED TERMINAL
- PLUG AND RECEPTACLE

336228-101 REV. A

FXM4 PARTS LIST									
KEY NO.	DESCRIPTION	FAST PARTS NO.	FXM4X1800A1	FXM4X2400A1	FXM4X3000A1	FXM4X3600A1	FXM4X4200A1	FXM4X4800A1	FXM4X6000A1
01	BLOWER ASSY	1179738	1	-	-	-	-	-	-
01		1179739	-	1	-	-	-	-	-
01		1179740	-	-	1	-	-	-	-
01		1179741	-	-	-	1	-	-	-
01		1179742	-	-	-	-	1	-	-
01		1179743	-	-	-	-	-	1	-
01		1179744	-	-	-	-	-	-	1
02	TRANSFORMER	1172028	1	1	1	1	1	1	1
04	HARNESS ASSY BLOWER	1171676	1	1	1	1	1	1	1
05	FILTER LO EFF	1171652	1	1	-	-	-	-	-
05		1171653		-	1	1	1	-	-
05		1171654						1	1
06	TXV	1178991	1	1	-	-	-	-	-
06		1172349		-	1	-	-	-	-
06		1178990				1	1		
06		1172350		-	-	-	-	1	1
07	COIL AND HEADER ASY	1173766	1	1	-	-	-	-	-
07		1172887		-	1	-	-	-	-
07		1173768		-	-	1	1	-	-
07		1179759		-	-	-	-	1	-
07		1178985							1
08	STRAINER	1171740	1	1	1	1	1	1	1
09	CONDENSATE PAN	1179673	-	-	-	1	1	-	-
09		1179674		-	-	-	-	1	-
09		1179728		-	-	-	-	-	1
10	CONDENSATE PAN ASY	1175207	1	1	-	-	-	-	-
10		1179731		-	1				
10		1179676				1	1		
10		1179677						1	1
11	WHEEL BLOWER	1171745	1	1					
11		1171742		-	1	1	1	1	1
12	MOTOR BLOWER	1179752	1						
12		1179753	-	1	-	-	-	-	-
12		1179754		-	1	-	-	-	-
12		1179755		-	-	1	-	-	-
12		1179756		-	-	-	1	-	-
12		1179757		-	-	-	-	1	-
12		1179758		-	-	-	-	-	1
14	CUTOFF	1171567	1	1					
14		1171572			1	1	1	1	1
15	LUG GROUND	1170677	1	1	1	1	1	1	1
16	DISTRIBUTOR ASY	1171603	1	1					
16		1172888			1	-			
16		1172983				1	1		
16		1171606						1	
16		1171605							1
A	PANEL ASSY TOP INSUL	1172361	1	1					
A		1172362		-	1	-	-	-	-

- continued on next page -

FXM4 PARTS LIST (continued)									
KEY NO.	DESCRIPTION	FAST PARTS NO.	FXM4X1800A1	FXM4X2400A1	FXM4X3000A1	FXM4X3600A1	FXM4X4200A1	FXM4X4800A1	FXM4X6000A1
A		1172363		-	-	1	1	-	-
A		1172336		-	-	-	-	1	1
AA	PLATE HEATER	1171584	1	1					
AA		1171581		-	1	1	1	-	-
AA		1171582		-	-	-	-	1	-
AA		1171584							1
B	DOOR ASSY LOWER INSUL	1172367	1	1					
B		1172340		-	1	-	-	-	-
B		1172368		-	-	1	1	-	-
B		1179768		-	-	-	-	1	-
B		1172342		-	-	-	-	-	1
BB	DECK BLOWER	1171587	1	1					
BB		1171588		-	1	1	1	-	-
BB		1171589		-	-	-	-	1	1
C	DOOR ASSY UPPER INSUL	1172374	1	1					
C		1172346		-	1	-	-	-	-
C		1172375		-	-	1	1	-	-
C		1172347		-	-	-	-	1	1
CC	BRACKET COIL	1171651	1	1	-	-	-	-	-
CC		1171650		-	1	-	-	-	-
D	DOOR ASSY FITTING INSUL	1172339	1	1	1	1	1	1	1
DD	SHIELD COND PAN	1172328	1	1	1	-	-	-	-
E	DOOR ASSY FILTER	1171934	1	1					
E		1171935		-	1	1	1	-	-
E		1171936		-	-	-	-	1	1
EE	EXTENSION COIL	1171579	1	1					
EE		1171580		-	1	-	-	-	-
F	BARRIER LOW VOLTAGE	1171660	1	1	1	1	1	1	1
FF	SUPPORT COIL	1171666	1	1					
FF		1171667		-	1	-	-	-	-
G	BAFFLE DIFFUSER	1171569	2	2	2	2	2	2	2
GG	BAFFLE COIL	1171644	1	1	1	-	-	-	-
H	SPRING	1172554	1	1	1	1	1	1	1
HH	SUPPORT COND PAN	1171664	1	1	1	-	-	-	-
J	TUBE DRAIN	1172337				1	1	1	1
JJ	CHANNEL COND	1171645	1	1	1	-			
K	GROMMET SUCTION	1171622	1	1	1	1	1	1	1
L	PLUG BUTTON	1173764		-	-	1	1	1	1
LL	FITTING DRAIN	1171636				1	1	1	1
M	SUPPORT PAN	1172636						1	1
MM	FITTING DRAIN	1171635				1	1	1	1
N	BRACKET COIL	1171574		-	-	2	2	2	2
P	BRACKET COIL	1171575		-	-	2	2	2	2
PP	CAP	1174949				1	1	1	1
Q	SHIELD COND PAN	1172328		-	-	2	2	2	2
R	AIR SEAL ASSY	1171640		-	-	1	1	1	-
R		1171641		-	-	-	-	-	1
RR	CAP	1174950				1	1	1	1

- continued on next page -

FXM4 PARTS LIST (continued)									
KEY NO.	DESCRIPTION	FAST PARTS NO.	FXM4X1800A1	FXM4X2400A1	FXM4X3000A1	FXM4X3600A1	FXM4X4200A1	FXM4X4800A1	FXM4X6000A1
S	TROUGH CNDS	1171639		-	-	1	1	-	-
S		1171638		-	-	-	-	1	1
T	TROUGH CNDS	1171637		-	-	1	1	1	1
U	BAFFLE DRIP	1171646		-	-	1	1	-	-
U		1171647		-	-	-	-	1	-
U		1171648		-	-	-	-	-	1
V	RING DRIP	1171649		-	-	1	1	1	-
V		1172329		-	-	-	-	-	1
W	BAND MTR MOUNT	1171733	1	1	-	-	-	-	-
W		1171566		-	1	1	1	1	1
X	HOUSING BLOWER FAN	1177067	1	1	-	-	-	-	-
X		1177069		-	1	1	1	1	1
Y	ARM AND GROMMET ASSY	1173747	1	1	-	-	-	-	-
Y		1173791		-	1	1	1	1	1
Z	SCREW SPECIAL	1170636	3	3	3	3	3	4	4
Parts Not Shown									
)	HARNESS ASSY UNIT	1178976	1	1	1	1	1	1	1
)	HEX HD 10AB 1/2	1177071	31	31	31	31	31	31	31
)	HEX HD 10AB 5/8	1177072	12	12	12	12	12	12	12
)	PAINT TOUCH-UP	1171357	1	1	1	1	1	1	1
)	GROMMET LIQUID	1171620	1	1	1	1	1	1	1
)	GROMMET	1171737	1	1	1	1	1	1	1

FXM4 PARTS LIST									
KEY NO.	DESCRIPTION	FAST PARTS NO.	FXM4X1800AT1	FXM4X2400AT1	FXM4X3000AT1	FXM4X3600AT1	FXM4X4200AT1	FXM4X4800AT1	FXM4X6000AT1
01	BLOWER ASY	1179738	1	-	-	-	-	-	-
01	BLOWER ASY	1179739	-	1	-	-	-	-	-
01	BLOWER ASY	1179740	-	-	1	-	-	-	-
01	BLOWER ASY	1179741	-	-	-	1	-	-	-
01	BLOWER ASY	1179742	-	-	-	-	1	-	-
01	BLOWER ASY	1179743	-	-	-	-	-	1	-
01	BLOWER ASY	1179744	-	-	-	-	-	-	1
02	TRANS 208/230>24 40VA	1172028	1	1	1	1	1	1	1
04	HARNESS ASSY BLOWER	1171676	1	1	1	1	1	1	1
05	FILTER HH 21.5X19.875X1	1171653	1	1	1	1	1	1	-
05	FILTER HH 21.5X23.3125X1	1171654	-	-	-	-	-	-	1
06	TXV	1178991	1	1	-	-	-	-	-
06	TXV	1178990	-	-	1	1	1	-	-
06	VALVE EXPANSION	1172350	-	-	-	-	-	1	-
06	TXV	1183311	-	-	-	-	-	-	1
07	COIL AND HDR ASY	1179022	1	1	-	-	-	-	-
07	COIL AND HDR ASY	1183512	-	-	1	-	-	-	-
07	COIL AND HDR ASY	1179024	-	-	-	1	1	-	-
07	COIL AND HDR ASY	1183514	-	-	-	-	-	1	-
07	COIL & HDR ASSY	1183382	-	-	-	-	-	-	1
08	STRAINER	1171740	1	1	1	1	1	1	1
09	PAN DRAIN	1179673	-	-	-	1	1	-	-
09	PAN DRAIN	1179674	-	-	-	-	-	1	-
09	PAN DRAIN	1179728	-	-	-	-	-	-	1
10	CNDS PAN ASY	1179730	1	1	-	-	-	-	-
10	CNDS PAN ASY	1179731	-	-	1	-	-	-	-
10	CNDS PAN ASY	1179676	-	-	-	1	1	-	-
10	CNDS PAN ASY	1179677	-	-	-	-	-	1	1
11	WHEEL DD10X7X1/2 CW CV	1171745	1	1	-	-	-	-	-
11	WHEEL DD11X9X1/2 CW CV	1171742	-	-	1	1	1	1	1
12	MOTOR BLR 1/3 HP	1179752	1	-	-	-	-	-	-
12	MOTOR BLR 1/3 HP	1179753	-	1	-	-	-	-	-
12	MOTOR BLR 1/2 HP	1179754	-	-	1	-	-	-	-
12	MOTOR BLR 1/2 HP	1179755	-	-	-	1	-	-	-
12	MOTOR BLR 1/2 HP	1179756	-	-	-	-	1	-	-
12	MOTOR BLR 3/4 HP	1179757	-	-	-	-	-	1	-
12	MOTOR BLR 3/4 HP	1179758	-	-	-	-	-	-	1
14	PANEL CUTOFF BLWR	1171567	1	1	-	-	-	-	-
14	PANEL CUTOFF BLWR	1171572	-	-	1	1	1	1	1
15	LUG GROUND	1170677	1	1	1	1	1	1	1
16	DISTRIBUTOR ASY	1171603	1	1	-	-	-	-	-
16	DISTRIBUTOR ASY	1172888	-	-	1	-	-	-	-
16	DISTRIBUTOR ASY	1172983	-	-	-	1	1	-	-
16	DISTRIBUTOR ASY	1171606	-	-	-	-	-	1	-
16	DISTRIBUTOR ASY	1171605	-	-	-	-	-	-	1
A	PANEL TOP	1172361	1	1	-	-	-	-	-
A	PANEL TOP	1172362	-	-	1	-	-	-	-
A	PANEL TOP	1172363	-	-	-	1	1	-	-

- continued on next page -

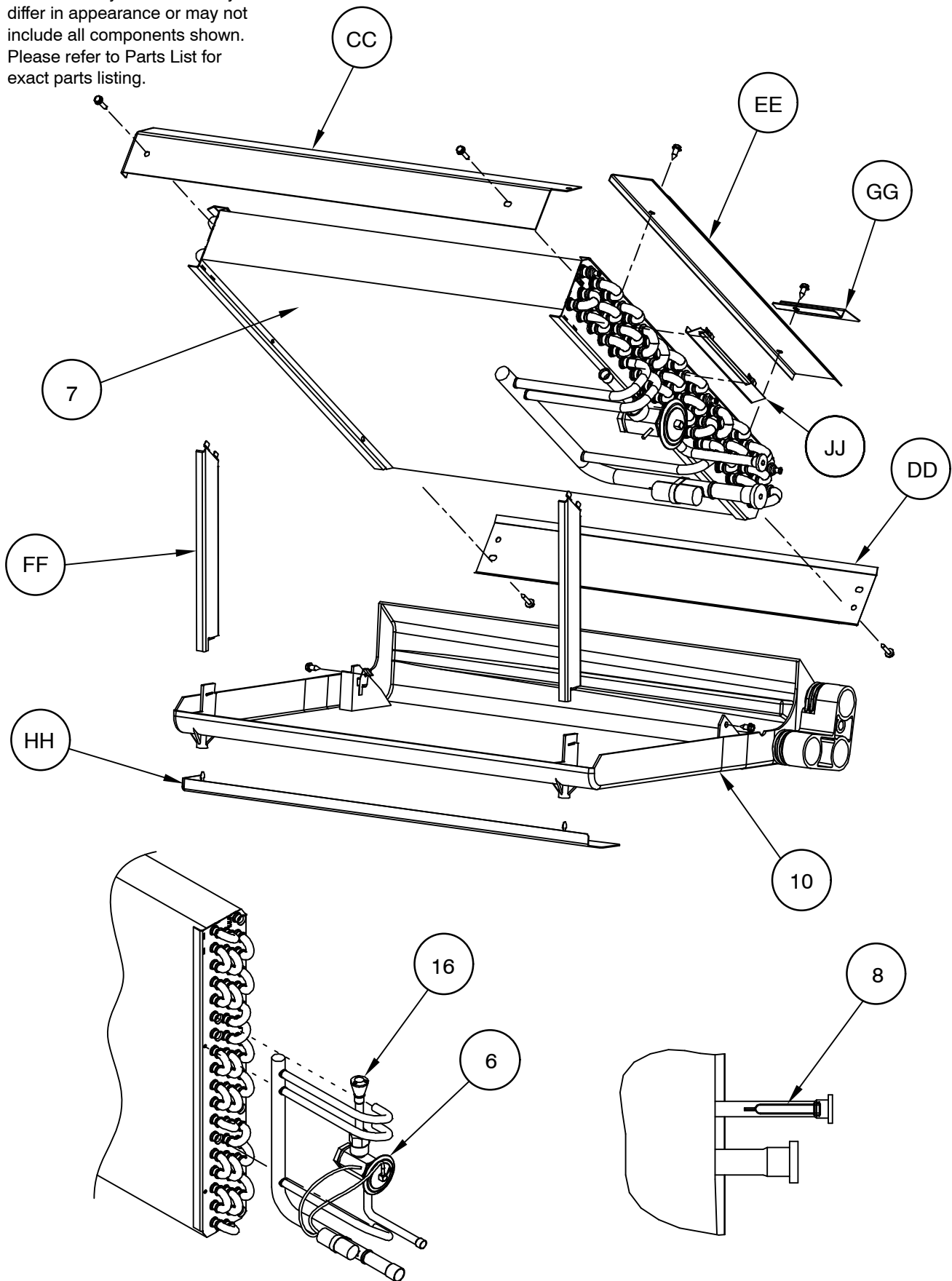
FXM4 PARTS LIST (continued)									
KEY NO.	DESCRIPTION	FAST PARTS NO.	FXM4X1800AT1	FXM4X2400AT1	FXM4X3000AT1	FXM4X3600AT1	FXM4X4200AT1	FXM4X4800AT1	FXM4X6000AT1
A	PANEL TOP	1172336	-	-	-	-	-	1	1
AA	PLATE HEATER	1171584	1	1	-	-	-	-	-
AA	PLATE HEATER	1171581	-	-	1	1	1	-	-
AA	PLATE HEATER	1171582	-	-	-	-	-	1	1
B	DOOR LOWER	1172367	1	1	-	-	-	-	-
B	DOOR LOWER	1172340	-	-	1	-	-	-	-
B	DOOR LOWER	1172368	-	-	-	1	1	-	-
B	DOOR ASY LOWER	1179768	-	-	-	-	-	1	-
B	DOOR LOWER	1172342	-	-	-	-	-	-	1
BB	DECK BLOWER	1171587	1	1	-	-	-	-	-
BB	DECK BLOWER	1171588	-	-	1	1	1	-	-
BB	DECK BLOWER	1171589	-	-	-	-	-	1	1
C	DOOR UPPER	1172374	1	1	-	-	-	-	-
C	DOOR UPPER	1172346	-	-	1	-	-	-	-
C	DOOR UPPER	1172375	-	-	-	1	1	-	-
C	DOOR UPPER	1172347	-	-	-	-	-	1	1
CC	BRACKET COIL	1171651	1	1	-	-	-	-	-
CC	BRACKET COIL	1171650	-	-	1	-	-	-	-
D	DOOR FITTING	1172339	1	1	1	-	-	-	-
D	DOOR FITTING	1172344	-	-	-	1	1	1	1
E	DOOR FILTER	1171934	1	1	-	-	-	-	-
E	DOOR FILTER	1171935	-	-	1	1	1	-	-
E	DOOR FILTER	1171936	-	-	-	-	-	1	1
EE	EXTENSION COIL	1171579	1	1	-	-	-	-	-
EE	EXTENSION COIL	1171580	-	-	1	-	-	-	-
F	BARRIER LOW VOLTAGE	1171660	1	1	1	1	1	1	1
FF	SUPPORT COIL	1171666	2	2	-	-	-	-	-
FF	SUPPORT COIL	1171667	-	-	2	-	-	-	-
G	BAFFLE DIFFUSER	1171569	2	2	2	2	2	2	2
GG	BAFFLE COIL	1171644	1	1	1	-	-	-	-
H	SPRING FILTER	1172554	1	1	1	1	1	1	1
HH	SUPPORT COND PAN	1171664	1	1	1	-	-	-	-
J	TUBE DRAIN	1172337	-	-	-	1	1	1	1
JJ	CHANNEL COND	1171645	1	1	1	-	-	-	-
K	GROMMET SUCTION	1171622	1	1	1	1	1	1	1
L	PLUG BUTTON	1173764	-	-	-	1	1	1	1
LL	FITTING DRAIN	1171636	-	-	-	1	1	1	1
M	SUPPORT BRACKET	1172636	-	-	-	-	-	1	1
MM	FITTING DRAIN	1171635	-	-	-	1	1	1	1
PP	CAP END	1174949	-	-	-	1	1	1	1
N	BRACKET COIL	1171574	-	-	-	2	2	2	2
RR	CAP END	1174950	-	-	-	1	1	1	1
P	BRACKET COIL	1171575	-	-	-	2	2	2	2
Q	SHIELD COND PAN	1172328	1	1	1	2	2	2	2
R	AIR SEAL ASY	1171640	-	-	-	1	1	1	-
R	AIR SEAL ASY	1171641	-	-	-	-	-	-	1
S	TROUGH CNDS	1171639	-	-	-	1	1	-	-
S	TROUGH CNDS	1171638	-	-	-	-	-	1	1

- continued on next page -

FXM4 PARTS LIST (continued)									
KEY NO.	DESCRIPTION	FAST PARTS NO.	FXM4X1800AT1	FXM4X2400AT1	FXM4X3000AT1	FXM4X3600AT1	FXM4X4200AT1	FXM4X4800AT1	FXM4X6000AT1
T	TROUGH CNDS	1171637	-	-	-	1	1	1	1
U	BAFFLE DRIP	1171646	-	-	-	2	2	-	-
U	BAFFLE DRIP	1171647	-	-	-	-	-	2	-
U	BAFFLE DRIP	1171648	-	-	-	-	-	-	2
V	RING DRIP	1171649	-	-	-	1	1	1	-
V	RING DRIP	1172329	-	-	-	-	-	-	1
W	BAND MOTOR MOUNT	1171733	1	1	-	-	-	-	-
W	BAND MTR MOUNT	1171566	-	-	1	1	1	1	1
X	HOUSING BLR REPLACEMENT KIT	1173808	1	1	-	-	-	-	-
X	HOUSING BLR REPLACEMENT KIT	1173806	-	-	1	1	1	1	1
Y	ARM & GROM ASSY	1173747	3	3	-	-	-	-	-
Y	ARM & GROM ASSY	1173791	-	-	4	4	4	4	4
Z	SCREW	1170636	3	3	4	4	4	4	4
Parts Not Shown									
)	GROMMET	1171737	1	1	1	1	1	1	1
)	HARNESS ASY ECMX FAN COIL	1178976	1	1	1	1	1	1	1
)	FUSE 3A	1179701	1	1	1	1	1	1	1
)	GROMMET LIQUID	1171620	1	1	1	1	1	1	1
)	PAINT DARK GREY 16OZ AEROSOL	1171357	1	1	1	1	1	1	1

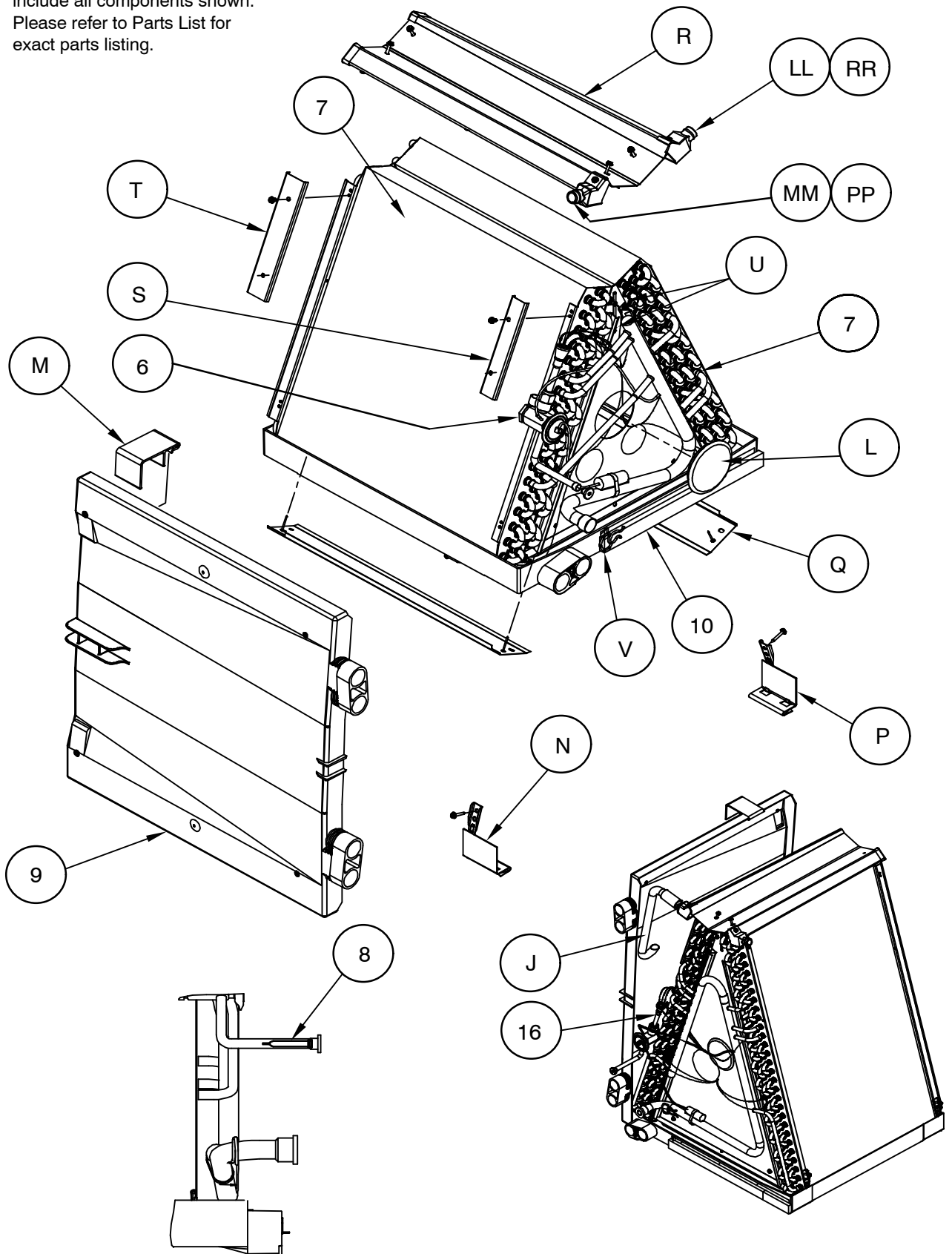
FXM4X 18 - 30

NOTE: This illustration is for reference only. Your unit may differ in appearance or may not include all components shown. Please refer to Parts List for exact parts listing.



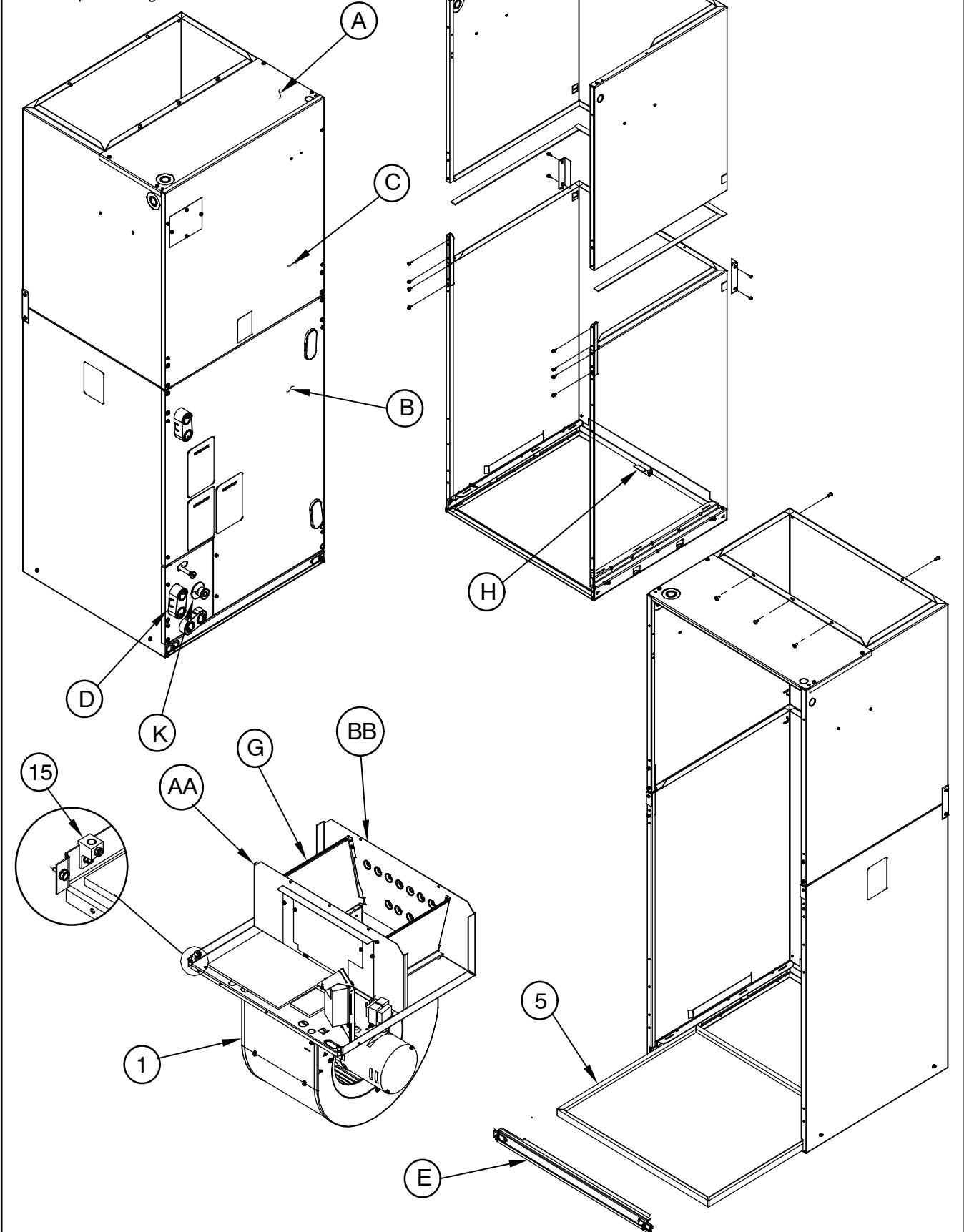
NOTE: This illustration is for reference only. Your unit may differ in appearance or may not include all components shown. Please refer to Parts List for exact parts listing.

FXM4X 36 - 60



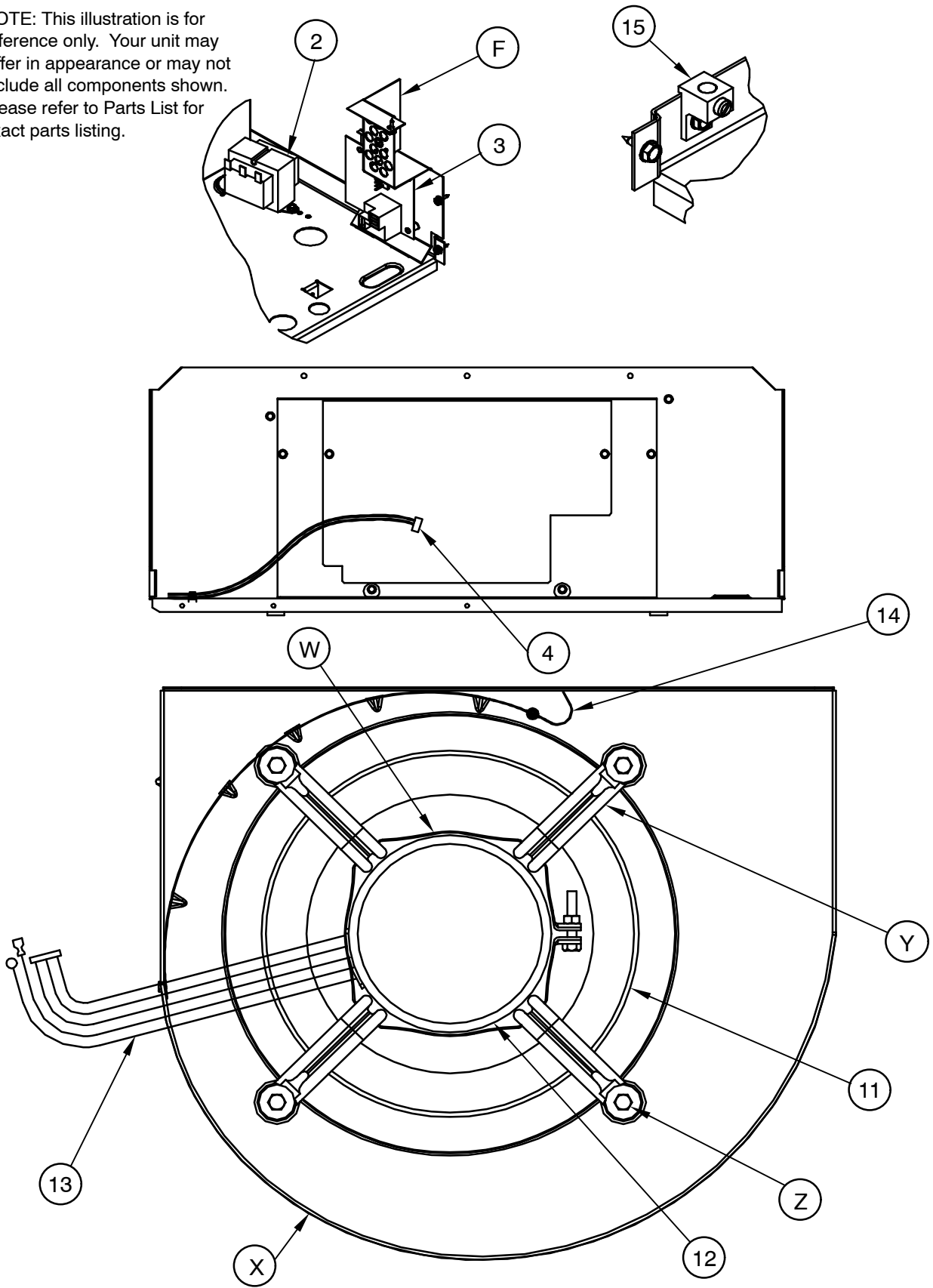
FXM4X 18 - 60

NOTE: This illustration is for reference only. Your unit may differ in appearance or may not include all components shown. Please refer to Parts List for exact parts listing.



FXM4X 18 - 60

NOTE: This illustration is for reference only. Your unit may differ in appearance or may not include all components shown. Please refer to Parts List for exact parts listing.



AIRFLOW PERFORMANCE - CFM at a given Speed and Static reading							
Model	Blower Speed	Measured Static Pressure, inlet to outlet (inches water column)					
		0.10	0.20	0.30	0.40	0.50	0.60
FXM4X1800	Tap 5	776	745	696	660	609	572
	Tap 4	683	644	589	548	494	461
	Tap 3	683	644	589	548	494	461
	Tap 2	631	563	500	443	409	361
	Tap 1	625	524	457	417	367	319
FXM4X2400	Tap 5	956	920	891	851	816	780
	Tap 4	825	795	757	722	674	634
	Tap 3	825	795	757	722	674	634
	Tap 2	726	695	635	598	543	509
	Tap 1	631	563	500	443	409	361
FXM4X3000	Tap 5	1189	1151	1104	1050	1003	959
	Tap 4	1041	998	944	886	837	772
	Tap 3	1041	998	944	886	837	772
	Tap 2	924	876	817	752	704	660
	Tap 1	779	693	628	571	526	476
FXM4X3600	Tap 5	1363	1332	1294	1253	1207	1157
	Tap 4	1237	1206	1160	1121	1070	1013
	Tap 3	1237	1206	1160	1121	1070	1013
	Tap 2	1095	1058	1007	951	888	824
	Tap 1	1014	885	773	673	609	549
FXM4X4200	Tap 5	1519	1490	1454	1419	1379	1332
	Tap 4	1437	1403	1366	1333	1294	1245
	Tap 3	1437	1403	1366	1333	1294	1245
	Tap 2	1257	1226	1191	1141	1090	1033
	Tap 1	1237	1206	1160	1121	1070	1013
FXM4X4800	Tap 5	1757	1725	1693	1653	1614	1576
	Tap 4	1664	1626	1593	1552	1517	1477
	Tap 3	1664	1626	1593	1552	1517	1477
	Tap 2	1459	1420	1379	1336	1298	1259
	Tap 1	1301	1241	1195	1150	1102	1039
FXM4X6000	Tap 5	2030	1995	1961	1927	1888	1842
	Tap 4	1811	1775	1740	1703	1664	1613
	Tap 3	1811	1775	1740	1703	1664	1613
	Tap 2	1665	1632	1593	1556	1507	1453
	Tap 1	1462	1418	1371	1327	1278	1228

NOTES:

- Airflow based upon dry coil at 230v with factory approved filter and electric heater (2 element heater sizes 18 through 36, 3 element heater sizes 42 through 60).
- Airflow at 208 volts is approximately the same as 230 volts because the X13 motor is a constant torque motor. The torque doesn't drop off at the speeds the motor operates.
- To avoid potential for condensate blowing out of drain pan prior to making drain trap: Return static pressure must be less than 0.40 in. wc. Horizontal applications of 043 - 061 sizes must have supply static greater than 0.20 in. wc.
- Airflow above 400 cfm/ton on 049 - 061 size could result in condensate blowing off coil or splashing out of drain pan.
- Shading - Airflow outside 450 cfm/ton.

STATIC PRESSURE DROP ACROSS FILTER (inches of water column)									
Model Size	CFM								
	400	600	800	1000	1200	1400	1600	1800	2000
1800	.020	.044	.075	-	-	-	-	-	-
2400	-	.022	.048	.072	.100	-	-	-	-
3000	-	.022	.048	.072	.100	-	-	-	-
3600	-	-	-	.051	.070	.092	.120	.152	-
4200	-	-	-	.051	.070	.092	.120	.152	-
4800	-	-	-	.051	.070	.092	.120	.152	-
6000	-	-	-	-	-	-	.086	.105	.130

STATIC PRESSURE CORRECTION FROM DRY TO WET COIL (inches of water column)

Airflow performance chart was developed using fan coils with DRY coils.
 When taking a static reading across a WET coil, adjust the static pressure numbers by **adding** the values in this table (for a given CFM, wet coil will have greater static pressure drop than dry coil).

Model Size	CFM															
	500	600	700	800	900	1000	1100	1200	1300	1400	1500	1600	1700	1800	1900	2000
1800	.034	.049	.063	-	-	-	-	-	-	-	-	-	-	-	-	-
2400	.016	.027	.038	.049	.059	-	-	-	-	-	-	-	-	-	-	-
3000	-	-	-	.049	.059	.070	.080	-	-	-	-	-	-	-	-	-
3600	-	-	-	-	-	.055	.064	.073	.081	-	-	-	-	-	-	-
4200	-	-	-	-	-	-	-	.049	.056	.063	.070	-	-	-	-	-
4800	-	-	-	-	-	-	-	-	-	.038	.043	.049	.054	.059	-	-
6000	-	-	-	-	-	-	-	-	-	-	-	.027	.031	.035	.039	.043