



NEEDLESTICK RESISTANT

2/4 Alycore™ configuration provides the highest level of cut and puncture resistance while maintaining incredible dexterity

TITANFIBRE™ MICROFIBRE

Titanfibre™ microfibre palm and hooded fingertips provides excellent abrasion resistance up to 4000+ cycles

PVC PALM PATCH

PVC palm patch for added protection

SILICONE TEXTURE

Silicone texture back of hand

SLIP-ON STYLE CUFF


Snug-fitting shirred elastic wrist with slip-on style cuff for easy on/off

ADDITIONAL

Also available in 4/8 configuration.
Part number 034ALY48

WATSON GLOVES WARNS ANY USER OF THIS PRODUCT THAT IT MAY NOT BE SUITABLE FOR A SPECIFIC USE. THIS PRODUCT HAS BEEN DESIGNED AND TESTED UNDER CONTROLLED CONDITIONS FOR CERTAIN PURPOSES. HOWEVER, BECAUSE WATSON GLOVES HAS NO CONTROL OVER THE SPECIFIC CONDITIONS OF THE END USER'S ACTUAL USE OF ITS PRODUCTS THEY MAY NOT BE SUITABLE FOR A SPECIFIC USE. WATSON GLOVES DISCLAIMS ANY LIABILITY FOR THE SELECTION BY AN END USER FOR A SPECIFIC USE. SEE OUR WEBSITE WATSONGLOVES.COM FOR FURTHER INFORMATION.

MECHANICAL PROTECTION RATING

EN 388	ANSI	ANSI	8.7N
			
4543	CUT	CUT	ASTM F2878-10

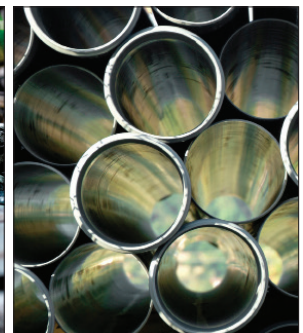


AREAS OF PROTECTION



- 2 Layers of Alycore™ on the fingers
- 4 Layers of Alycore™ on the palm

HIGH PERFORMANCE



NAME: Gridlock **UPC:**
STYLE #: 034ALY24 M 065537848761
SIZE: M-XL L 065537848778
APPLICATIONS XL 065537848785
Waste Management
Lumber
Recycling
Metal Fabrication
Landscaping

BURNABY P 604 874 1105 F 604 875 9009 T 800 663 9509	CALGARY P 403 279 2262 F 403 236 7919 T 800 363 7462	MISSISSAUGA P 905 363 0727 F 905 363 0730 T 888 715 4299
--	--	--



HEAD OFFICE
7955 North Fraser Way
Burnaby, BC V5J 0A4
www.watsongloves.com

