



Shop Supplies



Hose reels
Chain hoist
Level hoist
Beam clamps
Caster wheels
Wheels

Springs
Retainer rings
Hose reel
Jack stands
Snatch blocks
Cable pullers



SHOP SUPPLIES



Air Hose Reels - Heavy Duty Steel Frame

Corrosion resistant powder coat finish. Features spring tension brake and solid brass swivel. Mounts on floor, wall or workbench.

PART#	REEL CAPACITY	HOSE DIAMETER	INLET DIAMETER	HOSE OUTLET
11362	100 ft.	3/8"	3/8" NPT	3/8" NPT
11363	50 ft.	3/8"	3/8" NPT	3/8" NPT



11363

Industrial Hose Reel

Heavy duty steel assembly. Corrosion resistant powder coat finish. Ratchet gear locks reel at desired hose length. 3/8" heavy duty industrial grade rubber hose. Use for **air and water**, 3/8" NPT brass fitting.

PART#	HOSE LENGTH	HOSE DIAMETER	MAXIMUM PRESSURE	COLOUR
11369	50 ft.	3/8"	300 PSI	Red
11371	100 ft.	3/8"	300 PSI	Black & Yellow



Retractable Hose Reel - Silver Series

Auto rewind, heavy duty steel assembly. Powder coated finish. Self locking mechanism, heavy duty springs. Robust for commercial use. Industrial grade hose for **water, oil and air**.

PART#	HOSE LENGTH	HOSE DIAMETER	MAXIMUM PRESSURE
11359	35 ft.	1/4"	300 PSI
11360	50 ft.	3/8"	300 PSI
11361	50 ft.	1/2"	300 PSI



11359

Dual Bracket Heavy Duty Grease Hose Reel

Heavy duty **grease** hose reel with 1/4" hose diameter and a 50' hose length. It features a heavy duty spring and gauge for retraction.

PART#	HOSE LENGTH	HOSE DIAMETER	MAXIMUM PRESSURE
11373	50 ft.	1/4"	5,000 PSI



Replacement Parts for Hose Reels

PART#	DESCRIPTION	FOR SERIES
11359-1	1/4" Hose stopper	11359
11369-1	3/8" Hose stopper	11360,11369,11371
11361-1	1/2" Hose stopper	11361
11369-2	4-way Roller bracket assembly	11369
11371-1	4-way roller bracket assembly	11371
11359-2	4-way roller bracket assembly	11359
11360-1	4-way roller bracket assembly	11360
11369-3	1/4" FNPT swivel	11369,11371
11362-1	3/8" FNPT swivel	11362,11363

PART#	DESCRIPTION	FOR SERIES
11359-3	1/4" FNPT swivel	11359,11360
11361-2	1/2" FNPT swivel	11361
11369-4	LD Locking pawl accessory	11369
11371-2	LD Locking pawl accessory	11371
11359-4	HD Locking pawl accessory	11359,11360,11361
11373-1	1/4" NPT Swivel replacement	11373
11373-2	Hose roller guide accessories	11373
11373-3	1/4" Hose stopper	11373

Sizes are approximate. Specifications subject to change without notice.





Standard Single Pulley Block

PART#	SIZE	W.L.L.	ROPE DIAMETER	OVERALL LENGTH	DESCRIPTION
80335	3"	1/2 Ton	8 mm (5/16")	11"	Loop, Safety Latch, Access Latch & Grease Fitting



Standard Double Pulley Block

PART#	SIZE	W.L.L.	ROPE DIAMETER	OVERALL LENGTH	DESCRIPTION
80350	3"	1/2 Ton	8 mm (5/16")	11"	Loop
80355	4"	1 Ton	10 mm (3/8")	13"	Loop

80350



Single Pulley Block With Eye

PART#	SIZE	W.L.L.	ROPE DIAMETER	OVERALL LENGTH	DESCRIPTION
80360	3"	1/2 Ton	8 mm (5/16")	11"	Eye, Access Latch, Safety Latch & Grease Fitting

80360



Access Latch



Grease Fitting



Jack Stands

Made of A3 steel. Meets ANSI 2009 Specs. Powder coated finish. Ratchet locking gear. Ideal for auto, home, and shop. 2 per box.

PART#	CAPACITY	ADJUSTABLE HEIGHTS	BASE DIMENSIONS
11548	6,000 lb/ea. stand	11-7/32" to 16-7/8"	7-5/8" x 6-7/8"
11549	13,200 lb/ea. stand	15-1/2" to 23-3/4"	10-13/16" x 9-5/8"
11550	26,400 lb /ea. stand	19-3/8" to 28-1/8"	11-1/2" x 12-5/8"

Sizes are approximate. Specifications subject to change without notice.



Heavy Duty Snatch Block With Hook

PART#	PULLEY DIAMETER	ROPE DIAMETER	W.L.L.	TON
80270	3"	3/8"	4,000 lb	2
80271	4-1/2"	1/2"	8,000 lb	4
80272	6"	3/4"	16,000 lb	8
80273	8"	3/4"	16,000 lb	8



Heavy Duty Snatch Block With Shackle

PART#	PULLEY DIAMETER	ROPE DIAMETER	W.L.L.	TON
80280	3"	3/8"	4,000 lb	2
80281	4-1/2"	1/2"	8,000 lb	4
80282	6"	3/4"	16,000 lb	8
80283	8"	3/4"	16,000 lb	8



Heavy Duty Snatch Block Tail Boards

PART#	PULLEY DIAMETER	ROPE DIAMETER	W.L.L.	TON
80290	3"	3/8"	4,000 lb	2
80291	4-1/2"	1/2"	8,000 lb	4
80292	6"	3/4"	16,000 lb	8
80293	8"	3/4"	16,000 lb	8



Trolleys

Rugged steel construction. Lifetime lubricated & sealed bearings. Proof tested and certified. Built-in bumper guards. Use on straight or curved tracks. Adjustable to various beams.

PART#	CAPACITY	BEAM WIDTH
80301	1 Ton	2-15/16 - 4-15/16"
80302	2 Ton	3-15/16 - 5-15/16"
80303	3 Ton	3-15/16 - 5-15/16"
80305	5 Ton	4-15/16 - 6-7/8"



Beam Clamps

Rugged steel construction. Proof tested & certified. Use on straight or curved tracks. Adjustable to various beams.

PART#	CAPACITY	BEAM WIDTH
80320	1 Ton	2-15/16 - 8-11/16"
80321	2 Ton	3-1/8 - 12-5/8"
80322	3 Ton	3-1/8 - 12-5/8"
80323	5 Ton	3-9/16 - 12-5/8"



Cable Pullers

Designed to lift, stretch, lower or pull heavy loads. Features double ratchet wheel brake system, and hooks with safety latches. Snatch block included.

PART#	SAFE WORKING CAPACITY	MAX. RATED CAPACITY	HOOK SIZE	CABLE DIAMETER	CABLE LENGTH	WEIGHT
11351	1/2 Ton	1 Ton	3/8"	5/32"	6.0 ft.	1.9 kg
11352	1 Ton	2 Ton	3/8"	5/32"	7.21 ft.	2.5 kg
11354	2 Ton	4 Ton	5/16"	7/32"	9.84 ft.	5.2 kg



Sizes are approximate. Specifications subject to change without notice.



Lever Hoists

Lightweight, compact and portable. Impact-resistant, rugged steel body construction. Features short, low effort, 360°rotating handle. Equipped with Easy Free chain, Latch-type swivel hooks, and high-tensile alloy chain.

PART#	RATED CAPACITY (TONS)	CHAIN DIA	LIFT	MINIMUM CLEARANCE	LENGTH	TEST LOAD (TONS)	REPLACEMENT HOOKS TOP PART#	REPLACEMENT HOOKS BOTTOM PART#
80259	1/4	3/16"	59"	10-5/8"	10-13/32"	1-5/8	80259-1	80259-2
80260	1/2	3/16"	59"	10-5/8"	10-13/32"	1-5/8	80260-1	80260-2
80261	3/4	7/32"	59"	11-13/32"	10-7/16"	1-1/8	80261-1	80261-2
80262	1	1/4"	59"	12-13/16"	10-7/16"	1-1/2	80262-1	80262-2
80263	1-1/2	9/32"	59"	14-3/16"	16-1/8"	2-1/4	80263-1	80263-2
80264	3	11/32"	59"	18-1/2"	16-1/8"	4-1/2	80264-1	80264-2

Chain Hoists

Lightweight, compact and portable. Impact-resistant, rugged steel body construction. Features short, low effort, 360°rotating handle. Equipped with Easy Free chain, Latch-type swivel hooks, and high-tensile alloy chain.

- *Steel Formed Case to protect both gear and hand chain wheel slides against external shock.*
- *Double Cover Protection to stop moisture and dirt from entering into the hand chain wheel case and the brake cover.*
- *Break Mechanism will activate instantly when operation is stopped, whether the load is light or heavy.*
- *Double Ratchet Pawls for extra safety. Should one pawl fail, the other restrains the load.*
- *Powder Metal Bushing to increase mechanical efficiency and reduce the hand chain pull strength.*
- *Load Chain Guide & Stripper to assure proper fit of load chain to load sheave. Also protects against dirt and moisture gathering in the load sheave.*
- *Slack End Anchorage that serves as a limit stopper to prevent any accidents caused by over-lowering heavy loads.*
- *Grade 80 Alloy Load Chain specially calibrated for hand chain block usage. All of the load chain meets or exceeds ISO and DIN standards.*
- *Hot forged, heat treated, swivel hooks with safety latches to ensure proper hooking to the load or sling.*



80251

PART#	STANDARD RATED W.L.L.	LIFT	HEADROOM	HANDLE EFFORT	TEST LOAD (TONS)	REPLACEMENT HOOKS TOP	REPLACEMENT HOOKS BOTTOM
80250	1/2 Ton	8.2'	10-3/4"	48 lb	3/4	80260-1	80260-2
80251	1 Ton	8.2'	11-3/4"	57 lb	1-1/2	80262-1	80262-2
80252	1-1/2 Ton	9.8'	14-3/4"	66 lb	2-1/4	80263-1	80263-2
80253	2 Ton	9.8'	14-3/4"	77 lb	3	80264-1	80264-2
80254	3 Ton	9.8'	20-3/4"	77 lb	4-1/2	---	---

Sizes are approximate. Specifications subject to change without notice.





Pneumatic Wheel

Rugged steel construction. Proof tested & certified. Use on straight or curved tracks. Adjustable to various beams. **Axel bore is 5/8" (except Part# 80117 which has an axle bore of 3/4").**

PART#	TIRE SIZE	HUB WIDTH	WHEEL DIA.	TIRE WIDTH	RIM DIA.	HUB TYPE	TREAD PATTERN	LOAD RATING
80101	2.50-4	1.75"	8.5"	2.275"	4.8"	Offset	Lug	180 lb
80105	4.10/3.50-4	2.28"	10"	3.25"	4.9"	Offset	Sawtooth	280 lb
80109	3.00-4	1.53"	10"	3"	4.8"	Offset	Diamond	260 lb
80113	5.00-6	3.15"	13"	4.45"	6.79"	Offset	Jag	390 lb
80116	4.80/4.00-8	6"	15.08"	3.66"	8.8"	Center	Smooth	390 lb
80117	4.80/4.00-8	6"	15.08"	3.66"	8.8"	Center	Smooth	390 lb



Flat Free Wheels

Axle bore size is 5/8". Steel rims. Tubeless. Comes with bearings and grease zerks.

PART#	TIRE SIZE	HUB WIDTH	WHEEL DIA.	TIRE WIDTH	RIM DIA.	HUB TYPE	TREAD PATTERN	LOAD RATING
80102	2.50-4	1.75"	8.5"	2.275"	4.8"	Offset	Lug	160 lb
80107	4.10/3.50-4	2.28"	10"	3.25"	4.9"	Offset	Jag	260 lb
80111	3.00-4	1.53"	10"	3"	4.8"	Offset	Diamond	240 lb
80112	3.00-4	2.59"	10"	3"	4.8"	Center	Diamond	240 lb
80115	5.00-6	3.15"	13"	4.45"	6.79"	Offset	Jag	370 lb
80118	4.80/4.00-8	6"	15"	3.66"	8.8"	Center	Smooth	370 lb



Semi-Pneumatic Wheel

Semi-pneumatic wheel with a durable plastic lightweight rim and hub. Axle bore size is 1/2".

PART#	TIRE SIZE	HUB WIDTH	WHEEL DIA.	TIRE WIDTH	RIM DIA.	HUB TYPE	TREAD PATTERN	LOAD RATING
80229	4.10/3.50-4	2.28"	10"	3.25"	4.67"	Offset	Jag	260 lb



Replacement Bearings For Wheels

PART#	AXLE BORE DIAMETER	OUTSIDE DIAMETER
80121	5/8"	1-15/32"
80122	1/2"	1-15/32"
80123	3/4"	1-15/32"



Sizes are approximate. Specifications subject to change without notice.





Caster Wheels With Rigid Top Plate

For general use in hardware, factory and warehouse. Strong, durable, economical. Corrosion resistant zinc finish. Hard rubber wheels, black.

PART#	WHEEL DIA.	WHEEL WIDTH	OVERALL HEIGHT	AXLE SIZE	MOUNTING HOLE DIA.	LOAD RATING (LB)	PLATE SIZE (IN.)
31015	1-1/2"	7/8"	2"	1/4"	1/4"	77 lb	2-3/8" x 1-1/2"
31020	2"	1"	2-1/2"	1/4"	1/4"	110 lb	1-6/8" x 2-5/8"
31025	2-1/2"	1-1/8"	3-3/16"	5/16"	5/16"	165 lb	2-1/8" x 3-6/8"
31030	3"	1-1/4"	3-13/16"	3/8"	5/16"	210 lb	2-1/2" x 4"
31040	4"	1-5/16"	5"	7/16"	3/8"	240 lb	2-1/4" x 5"
31050	5"	1-1/4"	6-3/16"	3/8"	5/16"	220 lb	3-5/8" x 2-1/2"
31060	6"	2"	7-1/2"	15/32"	7/16"	660 lb	4-1/2" x 4"
31080	8"	2"	9-1/2"	15/32"	7/16"	700 lb	4-1/2" x 4"

Caster Swivel Wheels

For general use in hardware, factory and warehouse. Strong, durable, economical. Corrosion resistant zinc finish. Hard rubber wheels, black.



PART#	WHEEL DIA.	WHEEL WIDTH	OVERALL HEIGHT	AXLE SIZE	MOUNTING HOLE DIA.	LOAD RATING (LB)	PLATE SIZE (IN.)
32015	1-1/2"	7/8"	2"	1/4"	1/4"	77 lb	2-3/8" x 1-3/4"
32020	2"	1"	2-1/2"	1/4"	1/4"	110 lb	1-7/8" x 2-9/16"
32025	2-1/2"	1-1/8"	3-3/16"	5/16"	5/16"	165 lb	2-3/4" x 3-13/16"
32030	3"	1-1/4"	3-13/16"	3/8"	5/16"	210 lb	3-1/8" x 4-1/8"
32040	4"	1-5/16"	5"	7/16"	3/8"	240 lb	4" x 5-1/8"
32050	5"	1-1/4"	6-3/16"	3/8"	5/16"	220 lb	3-5/8" x 2-1/2"
32060	6"	2"	7-1/2"	15/32"	7/16"	660 lb	4-1/2" x 4"
32080	8"	2"	9-1/2"	15/32"	7/16"	700 lb	4-1/2" x 4"

Caster Wheel With Side Locking Brake

For general use in hardware, factory and warehouse. Strong, durable, economical. Corrosion resistant zinc finish. Hard rubber wheels, black.



PART#	WHEEL DIA.	WHEEL WIDTH	OVERALL HEIGHT	AXLE SIZE	MOUNTING HOLE DIA.	LOAD RATING (LB)	PLATE SIZE (IN.)
33015	1-1/2"	7/8"	2"	1/4"	1/4"	77 lb	2-3/8" x 1-3/4"
33020	2"	1"	2-1/2"	1/4"	1/4"	110 lb	1-7/8" x 2-9/16"
33025	2-1/2"	1-1/8"	3-3/16"	5/16"	5/16"	165 lb	2-3/4" x 3-13/16"
33030	3"	1-1/4"	3-13/16"	3/8"	5/16"	210 lb	3-1/8" x 4-1/8"
33040	4"	1-5/16"	5"	7/16"	3/8"	240 lb	4 x 5-1/8"
33050	5"	1-1/4"	6-3/16"	3/8"	5/16"	220 lb	3-5/8" x 2-1/2"
33060	6"	2"	7-1/2"	15/32"	7/16"	660 lb	4-1/2" x 4"
33080	8"	2"	9-1/2"	15/32"	7/16"	700 lb	4-1/2" x 4"

Sizes are approximate. Specifications subject to change without notice.



Pneumatic Caster Wheel With Rigid Top Plate

Rigid caster wheel with 4.10/3.50-4 pneumatic tube tire. 50 PSI, 4-ply sawtooth tread. 3-piece split 1.8mm rim with curled edges. 4" centered hub with valve stem and grease fitting on same side of rim. 5/8" precision ball bearing. Frame thickness is 5.5 mm.

PART#	WHEEL DIAMETER	WHEEL WIDTH	OVERALL HEIGHT	AXLE SIZE	MOUNTING HOLE DIA.	LOAD RATING (LB)	PLATE SIZE (IN.)
31100	10"	3-3/8"	12"	5/8"	7/16"	500 lb	4" x 4-1/2"



Pneumatic Caster Swivel Wheel

Swivel caster wheel with 4.10/3.50-4 pneumatic tube tire. Premium 50 PSI, 4-ply sawtooth tread. 3-piece split 1.8mm rim with curled edges. 4" centered hub with valve stem and grease fitting on same side of rim. 5/8" precision ball bearing. Frame thickness is 5.5 mm.

PART#	WHEEL DIAMETER	WHEEL WIDTH	OVERALL HEIGHT	AXLE SIZE	MOUNTING HOLE DIA.	LOAD RATING (LB)	PLATE SIZE (IN.)
31101	10"	3-3/8"	12"	5/8"	7/16"	500 lb	4" x 4-1/2"



Flat Free Caster Wheel With Rigid Top Plate

Rigid caster wheel with flat free tire. 1.8 mm rim, 5/8" ball bearing.

PART#	WHEEL DIAMETER	WHEEL WIDTH	OVERALL HEIGHT	AXLE SIZE	MOUNTING HOLE DIA.	LOAD RATING (LB)	PLATE SIZE (IN.)
31102	10"	3-3/8"	12"	5/8"	7/16"	360 lb	4" x 4-1/2"



Flat Free Caster Swivel Wheel

Swivel caster wheel with flat free tire. 1.8 mm rim, 5/8" ball bearing.

PART#	WHEEL DIAMETER	WHEEL WIDTH	OVERALL HEIGHT	AXLE SIZE	MOUNTING HOLE DIA.	LOAD RATING (LB)	PLATE SIZE (IN.)
31103	10"	3-3/8"	12"	5/8"	7/16"	360 lb	4" x 4-1/2"



Sizes are approximate. Specifications subject to change without notice.

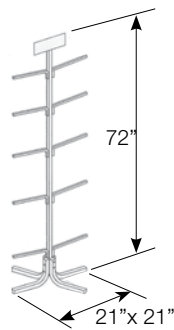




Wheel Rack Merchandiser

PART#	CONTENTS
80103	1 Small Freestanding Wheel Rack Only , 21" wide x 72" high x 21" deep.
80103K	Full Wheel Rack Merchandiser An assortment of pneumatic and flat free wheels on this space saving wheel rack. Rack is individually boxed, complete with hardware. All metal construction with black enamel painted finish. Includes: 10"x 3" Dynaline "Replacement Wheels" decal.

PART#	DESCRIPTION	QTY.
80101	Pneumatic Wheel - 8.5"-2.50 R4	2 ea.
80102	Flat Free Wheel - 8.5"-2.50 R4	2 ea.
80105	Pneumatic Hand Truck Wheel, 10.18"	2 ea.
80107	Flat Free Hand Truck Wheel, 10.18"	2 ea.
80109	Pneumatic Outdoor Hand Truck Wheel, 10.08"	2 ea.
80111	Flat Free Outdoor Hand Truck Wheel, 10.23"	2 ea.
80113	Pneumatic H.D. Hand Truck Wheel, 12.25"	2 ea.
80115	Flat Free H.D. Hand Truck Wheel, 13"	2 ea.
80116	Pneumatic Wheel Barrow Wheel, 15.08"	2 ea.
80118	Flat Free Wheel Barrow Wheel, 15.3"	2 ea.



80103K Full Merchandiser includes a laminated wheel reference chart (7" x 5.5") for customer convenience.

Gondola Wheel Merchandiser

PART#	CONTENTS
80100	Wheel Rack Only , 46" wide x 64" high x 24" deep
80100L	Signage and Labels only (44" x 12" header and rack labels)
80100K	Full Wheels Merchandiser . Includes 44" x 12" Dynaline "Wheels" Sign and labels (80100L) and the products listed below:

PART#	DESCRIPTION	QTY.	PART#	DESCRIPTION	QTY.
80101	Pneumatic Wheel - 10" -2.50 R4	2 ea.	80116	Pneumatic Wheel Barrow Wheel, 4.80/4 R8	2 ea.
80102	Flat Free Wheel - 10" -2.50 R4	3 ea.	80118	Flat Free Wheel Barrow Wheel, 4.80/4 R8	2 ea.
80105	Pneumatic Hand Truck Wheel - 10" - 4.10/3.50 R4	2 ea.	80120	High Speed Trailer Wheel, 4.80 x 12	1 ea.
80107	Flat Free Hand Truck Wheel - 10" - 4.10/3.50 R4	3 ea.	80124	High Speed Trailer Wheel, 5.30 x 12	2 ea.
80109	Pneumatic Outdoor Hand Truck Wheel - 3.00 R4	2 ea.	80128	High Speed Trailer Wheel - ST205/75 D13	2 ea.
80111	Flat Free Outdoor Hand Truck Wheel - 3.00 R4	3 ea.	80130	High Speed Trailer Wheel - ST205/75 D14	1 ea.
80113	Pneumatic H.D. Hand Truck Wheel, 13x5 R6	2 ea.	80132	High Speed Trailer Wheel - ST205/75 D15	1 ea.
80115	Flat Free H.D. Hand Truck Wheel, 13x5 R6	3 ea.			

Sizes are approximate. Specifications subject to change without notice.



Square Keystock

Supplied in 12" lengths only. Cold-drawn C-1018 steel. Zinc plated finish. Rockwell "C" hardness: 60. Thickness tolerance ± 0.1 mm; length tolerance ± 0.3 mm.

PART#	WIDTH	HEIGHT	QTY.	PART#	WIDTH	HEIGHT	QTY.
22750	1/8"	1/8"	Pkg. of 5	22756	1/2"	1/2"	Pkg. of 5
22751	3/16"	3/16"	Pkg. of 5	22758	5/8"	5/8"	Pkg. of 2
22752	1/4"	1/4"	Pkg. of 5	22760	3/4"	3/4"	Pkg. of 2
22753	5/16"	5/16"	Pkg. of 5	22761	7/8"	7/8"	Pkg. of 1
22754	3/8"	3/8"	Pkg. of 5	22763	1"	1"	Pkg. of 1
22755	7/16"	7/16"	Pkg. of 5				



Rectangular Keystock

Supplied in 12" lengths only. Cold-drawn C-1018 steel. Zinc plated finish. Rockwell "C" hardness: 60. Thickness tolerance ± 0.1 mm; length tolerance ± 0.1 mm.

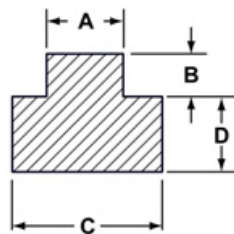
PART#	WIDTH	HEIGHT	QTY.	PART#	WIDTH	HEIGHT	QTY.
22782	1/4"	3/16"	Pkg. of 5	22791	3/8"	7/16"	Pkg. of 5
22785	1/4"	5/16"	Pkg. of 5	22792	3/8"	1/2"	Pkg. of 5
22786	1/4"	3/8"	Pkg. of 5	22795	7/16"	1/2"	Pkg. of 5
22789	5/16"	3/8"	Pkg. of 5	22796	1/2"	5/8"	Pkg. of 2



Step Keystock

Supplied in 12" lengths only. Cold-drawn C-1018 steel. Zinc plated finish. Rockwell "C" hardness: 60. Thickness tolerance ± 0.1 mm; length tolerance ± 0.1 mm.

PART#	A	B	C	D	QTY.
22821	3/16"	3/32"	1/4"	3/32"	Pkg. of 2
22822	1/4"	1/8"	5/16"	1/8"	Pkg. of 2
22823	1/4"	1/8"	3/8"	3/16"	Pkg. of 2
22824	5/16"	5/32"	3/8"	3/16"	Pkg. of 2
22825	3/8"	3/16"	7/16"	5/32"	Pkg. of 2
22826	3/8"	3/16"	1/2"	3/16"	Pkg. of 2
22827	7/16"	5/32"	1/2"	1/4"	Pkg. of 2
22828	1/2"	1/4"	5/8"	1/4"	Pkg. of 2



Dynaline offers merchandisers for almost every product. If you are ordering Keystock products then you may be interested in the following Merchandiser. For more information on this merchandiser see the Merchandising Section at the front of the catalogue.



Your Trusted Source.

Sizes are approximate. Specifications subject to change without notice.





Clevis Pins

Yellow zinc dichromate finish. Hole is 1/4" from end of pin. Package quantity 10 pcs. Made of C1020 steel*.

PART#	PIN DIA.	HOLE DIA.	A	B	PART#	PIN DIA.	HOLE DIA.	A	B
22500	1/4"	1/4"	1"	1-1/4"	22521	3/8"	3/8"	1-3/4"	2"
22501	1/4"	1/4"	1-1/4"	1-1/2"	22522	3/8"	3/8"	2"	2-1/4"
22502	1/4"	1/4"	1-1/2"	1-3/4"	22523	3/8"	3/8"	2-1/4"	2-1/2"
22503	1/4"	1/4"	1-3/4"	2"	22528	7/16"	7/16"	1-1/4"	1-1/2"
22504	1/4"	1/4"	2"	2-1/4"	22529	7/16"	7/16"	1-1/2"	1-3/4"
22505	1/4"	1/4"	2-1/4"	2-1/2"	22530	7/16"	7/16"	1-3/4"	2"
22509	5/16"	5/16"	1"	1-1/4"	22531	7/16"	7/16"	2"	2-1/4"
22510	5/16"	5/16"	1-1/4"	1-1/2"	22532	7/16"	7/16"	2-1/4"	2-1/2"
22511	5/16"	5/16"	1-1/2"	1-3/4"	22536	1/2"	1/2"	1"	1-1/4"
22512	5/16"	5/16"	1-3/4"	2"	22537	1/2"	1/2"	1-1/4"	1-1/2"
22513	5/16"	5/16"	2"	2-1/4"	22538	1/2"	1/2"	1-1/2"	1-3/4"
22514	5/16"	5/16"	2-1/4"	2-1/2"	22539	1/2"	1/2"	1-3/4"	2"
22518	3/8"	3/8"	1"	1-1/4"	22540	1/2"	1/2"	2"	2-1/4"
22519	3/8"	3/8"	1-1/4"	1-1/2"	22541	1/2"		2-1/4"	2-1/2"
22520	3/8"	3/8"	1-1/2"	1-3/4"					



Clevis Pin Dynapaks

PART#	CONTENTS	QTY.	PART#	CONTENTS	QTY.
92500	22500	Pkg. of 5	92518	22518	Pkg. of 3
92502	22502	Pkg. of 5	92520	22520	Pkg. of 3
92504	22504	Pkg. of 5	92522	22522	Pkg. of 3
92509	22509	Pkg. of 5	92529	22529	Pkg. of 2
92511	22511	Pkg. of 5	92538	22538	Pkg. of 2
92513	22513	Pkg. of 5	92540	22540	Pkg. of 2

Adjustable Clevis Pins

A quick replacement pin, the universal clevis pin features a series of holes making it adaptable to varying lengths. Use the diameter that fits your application and cut off the excess length. Easily replaces bolts, cotter pins or rivets on all types of equipment. Yellow zinc dichromate finish. First pin hole is 1/4" from the end of the pin.



PART#	PIN DIAMETER	OVERALL LENGTH	QTY.	PART#	PIN DIAMETER	OVERALL LENGTH	QTY.
22545	1/4"	2"	Pkg. of 5	22551	1/2"	2-1/2"	Pkg. of 5
22546	5/16"	2"	Pkg. of 5	22552	7/16"	3"	Pkg. of 5
22547	3/8"	2"	Pkg. of 5	22553	1/2"	3"	Pkg. of 5
22548	7/16"	2"	Pkg. of 5	22554	5/8"	3"	Pkg. of 5
22549	1/2"	2"	Pkg. of 5	22555	3/4"	3"	Pkg. of 5
22550	7/16"	2-1/2"	Pkg. of 5				

* 1020 is a general purpose low tensile low hardenability carbon steel generally supplied in the cold drawn or turned and polished condition, with a typical tensile strength range 410 - 790 Mpa, and Brinell hardness range 119 - 235. Characterized by excellent weldability, very good machinability with reasonable strength and very good ductility.

Sizes are approximate. Specifications subject to change without notice.



Machinery Bushings

Machinery bushings reduce wear between moving parts, prevent marring of fine finishes and can be used as spacers for sprockets, pulleys and gears on new or old equipment. Made of low carbon, mild steel with plain finish.



- 18 Gauge (l = light) = 0.042/0.054, 3/64"
- 14 Gauge (m = medium) = 0.068/0.082, 5/64"
- 10 Gauge (h = heavy) = 0.126/0.142, 1/8"
- Tolerances - O.D. +0.010/-0.010 I.D. +0.010 / -0.000

Reference Chart Available

See end of catalogue

PART#	IND#	INSIDE DIA.	OUTSIDE DIA.	GAUGE	QTY.	PART#	IND#	INSIDE DIA.	OUTSIDE DIA.	GAUGE	QTY.
22700	M-16L	9/16"	1"	18	Pkg. of 10	22720	M-36L	1-1/2"	2-1/4"	18	Pkg. of 10
22701	M-18L	5/8"	1-1/8"	18	Pkg. of 10	22721	M-36M	1-1/2"	2-1/4"	14	Pkg. of 10
22702	M-18M	5/8"	1-1/8"	14	Pkg. of 10	22722	M-36H	1-1/2"	2-1/4"	10	Pkg. of 10
22703	M-20L	3/4"	1-1/4"	18	Pkg. of 10	22723	M-38M	1-5/8"	2-3/8"	14	Pkg. of 10
22704	M-20M	3/4"	1-1/4"	14	Pkg. of 10	22724	M-38H	1-5/8"	2-3/8"	10	Pkg. of 10
22705	M-20H	3/4"	1-1/4"	10	Pkg. of 10	22725	M-40M	1-3/4"	2-1/2"	14	Pkg. of 10
22706	M-22L	7/8"	1-3/8"	18	Pkg. of 10	22726	M-40H	1-3/4"	2-1/2"	10	Pkg. of 10
22707	M-22M	7/8"	1-3/8"	14	Pkg. of 10	22727	M-46M	1-7/8"	2-7/8"	14	Pkg. of 10
22708	M-24L	1"	1-1/2"	18	Pkg. of 10	22728	M-46H	1-7/8"	2-7/8"	10	Pkg. of 10
22709	M-24M	1"	1-1/2"	14	Pkg. of 10	22729	M-48M	2"	3"	14	Pkg. of 10
22710	M-24H	1"	1-1/2"	10	Pkg. of 10	22730	M-48H	2"	3"	10	Pkg. of 10
22711	M-28L	1-1/8"	1-3/4"	18	Pkg. of 10	22731	M-50M	2-1/8"	3-1/8"	14	Pkg. of 10
22712	M-28M	1-1/8"	1-3/4"	14	Pkg. of 10	22732	M-50H	2-1/8"	3-1/8"	10	Pkg. of 10
22713	M-28H	1-1/8"	1-3/4"	10	Pkg. of 10	22733	M-52M	2-1/4"	3-1/4"	14	Pkg. of 10
22714	M-30L	1-1/4"	1-7/8"	18	Pkg. of 10	22734	M-52H	2-1/4"	3-1/4"	10	Pkg. of 10
22715	M-30M	1-1/4"	1-7/8"	14	Pkg. of 10	22735	M-54M	2-3/8"	3-3/8"	14	Pkg. of 10
22716	M-30H	1-1/4"	1-7/8"	10	Pkg. of 10	22736	M-54H	2-3/8"	3-3/8"	10	Pkg. of 10
22717	M-34L	1-3/8"	2-1/8"	18	Pkg. of 10	22737	M-56M	2-1/2"	3-1/2"	14	Pkg. of 10
22718	M-34M	1-3/8"	2-1/8"	14	Pkg. of 10	22738	M-56H	2-1/2"	3-1/2"	10	Pkg. of 10
22719	M-34H	1-3/8"	2-1/8"	10	Pkg. of 10						

Dynaline offers merchandisers for almost every product. If you are ordering Keystock products then you may be interested in the following Merchandiser. For more information on this merchandiser see the Merchandising Section at the front of the catalogue.

Machinery Bushings Merchandiser

PART#	CONTENTS
00235	Machinery Bushings Display Board Only , 12" x 24"
00235K	Full Machinery Bushings Merchandiser . Includes 00235 display board, 39 pegs (80004) and the fastest selling products.



Your Trusted Source.

Sizes are approximate. Specifications subject to change without notice.





- Drawers with lids easily pull open
- Bulk springs Merchandisers takes up less space than packaged springs
- Cabinet holds 100 types of springs.
- Illustrations or photos may not be exactly as shown.

Bulk Springs Merchandiser

PART#	CONTENTS
00243	Bulk Springs Display Board Only 24" x 24" Photo Board (features actual size photos)
00243K	Full Bulk Springs Assortment Merchandiser - A complete (900 pieces). Also includes cabinet, 4 drawers and 00243 Photo Display Board, 24" x 24".
00243C	Cabinet Only - Cabinet size is 20" wide x 14-1/2" high x 15-3/4" deep.

PART#	REF#	TYPE	MEASUREMENTS	WIRE DIA.	ASSORT. QTY.	REFILL QTY.
26001	1	Ext.	5/32" x 1-7/8"	0.02"	11	12
26002	2	Ext.	1/4" x 2-1/2"	0.035"	11	12
26003	3	Ext.	1/4" x 2-1/4"	0.032"	11	12
26004	4	Ext.	5/16" x 2-11/16"	0.041"	11	12
26005	5	Ext.	1/2" x 2-5/16"	0.062"	8	12
26006	6	Ext.	3/8" x 2"	0.035"	11	12
26007	7	Cone C	13/32"x11/16"x1"	0.041"	11	12
26008	8	Ext.	15/32" x 2-7/16"	0.054"	5	12
26009	9	Ext.	7/16" x 2-15/16"	0.062"	5	12.
26010	10	Ext.	13/32" x 2-3/4"	0.041"	5	12
26011	11	Ext.	3/8" x 2-11/16"	0.047"	5	12
26012	12	Brl C	7/16"x 11/16"x2"	0.047"	8	12
26013	13	Comp.	1/2" x 1-3/4"	0.054"	8	12
26014	14	Comp.	5/8" x 1-3/4"	0.091"	5	12
26015	15	Torsion	1/16" x 1/2"	0.072"	8	12
26016	16	Comp.	5/8" x 2"	0.072"	8	12
26017	17	Comp.	5/16" x 1-3/8"	0.041"	11	12
26018	18	Comp.	5/16" x 1-1/2"	0.02"	11	12
26019	19	Comp.	13/64" x 2-1/4"	0.032"	23	12
26020	20	Comp.	7/32" x 1-5/8"	0.015"	23	12
26021	21	Comp.	3/16" x 1-5/16"	0.022"	17	12
26022	22	Comp.	7/32" x 1-1/4"	0.032"	23	12
26023	23	Comp.	5/16" x 1-7/8"	0.026"	23	12
26024	24	Comp.	5/16" x 1-7/8"	0.041"	11	12
26025	25	Comp.	1/4" x 2"	0.023"	29	12
26026	26	Comp.	7/16" x 3"	0.047"	8	12
26027	27	Ext.	1/2" x 3-5/8"	0.062"	8	12
26028	28	Ext.	3/4" x 2-5/16"	0.105"	8	12
26029	29	Ext.	7/16" x 3-11/16"	0.047"	8	12
26030	30	Ext.	1/2" x 3-13/16"	0.041"	11	12
26031	31	Ext.	3/4" x 1-15/16"	0.105"	11	12
26032	32	Comp.	7/16" x 3-1/4"	0.062"	23	12
26033	33	Comp.	21/64" x 3-5/16"	0.047"	8	12
26034	34	Ext.	3/4" x 1-3/4"	0.105"	11	12
26035	35	Comp.	15/32" x 2-3/8"	0.08"	8	12
26036	36	Ext.	5/16" x 3-7/16"	0.041"	8	12

continued on next page

Sizes are approximate. Specifications subject to change without notice.

Bulk Springs Merchandiser cont...

PART#	REF#	TYPE	MEASUREMENTS	WIRE DIA.	ASSORT. QTY.	REFILL QTY.
26037	37	Comp.	15/32" x 1-1/8"	0.047"	11	12
26038	38	Ext.	9/32" x 6-1/2"	0.041"	8	12
26039	39	Comp.	11/16" x 1-1/8"	0.08"	11	12
26040	40	Ext.	5/8" x 5-3/8"	0.062"	3	6
26041	41	Comp.	1/2" x 2-13/16"	0.062"	8	6
26042	42	Ext.	1/2" x 6"	0.08"	3	6
26043	43	Comp.	11/16" x 3"	0.062"	5	6
26044	44	Ext.	5/8" x 5-7/8"	0.08"	3	6
26045	45	Comp.	3/4" x 3-3/8"	0.047"	8	6
26046	46	Ext.	21/32" x 4-7/8"	0.041"	3	6
26047	47	Comp.	7/8" x 3-7/16"	0.08"	3	6
26048	48	Comp.	7/16" x 5"	0.08"	3	6
26049	49	Comp.	31/32" x 3-3/4"	0.105"	3	6
26050	50	Ext.	15/32" x 6-3/4"	0.047"	3	6
26051	51	Ext.	11/32" x 5"	0.035"	3	6
26052	52	Ext.	7/16" x 5"	0.047"	3	6
26053	53	Ext.	9/16" x 3-15/16"	0.072"	5	6
26054	54	Comp.	15/32" x 5-1/4"	0.041"	8	6
26055	55	Comp.	13/16" x 3-1/4"	0.062"	5	6
26056	56	Comp.	1-1/32" x 5-3/8"	0.120"	2	6
26057	57	Comp.	3/4X3"	0.105"	5	6
26058	58	Comp.	1-1/4" x 4-5/8"	0.120"	2	6
26059	59	Comp.	1" x 3-3/4"	0.135"	2	6
26060	60	Comp.	11/16" x 9-1/2"	0.072"	2	6
26061	61	Comp.	15/16" x 9-7/8"	0.120"	2	6
26062	62	Ext.	1/2" x 9-3/4"	0.062"	2	6
26063	63	Ext.	3/4"x10-1/4"	.091"	2	6
26064	64	Ext.	3/4"x8"	.105"	2	6
26065	65	Ext.	5/8"x2-11/16"	.041"	11	12
26066	66X	Ext.	3/8"x2-3/16"	.062"	8	12
26067	67X	Comp.	21/64" x 1-1/8"	0.028"	14	12
26068	68X	Ext.	5/16"x2-3/16"	.041"	8	12
26069	69X	Comp.	1/4"x2"	.020"	11	12
26070	70X	Ext.	5/16"x2-1/8"	.032"	11	12
26071	71X	Comp.	3/16"x1-1/2"	.020"	11	12
26072	72X	Comp.	1/4"x1-7/8"	.022"	11	12
26073	73X	Ext.	7/16" x 1-15/16"	0.054"	8	12
26074	74X	Comp.	5/16" x 1-7/16"	0.025"	11	12
26075	75X	Ext.	15/64"x1-1/2"	.028"	11	12
26076	76X	Comp.	5/16"x2"	.041"	11	12
26077	77X	Comp.	3/8" x 1-7/16"	0.035"	11	12
26078	78X	Ext.	5/16" x 1-11/16"	0.041"	11	12
26079	79X	Comp.	3/8" x 1-15/16"	0.041"	11	12
26080	80X	Comp.	1/2" x 1-7/16"	0.062"	11	12



Detail of 00243K open drawer

PART#	REF#	TYPE	MEASUREMENTS	WIRE DIA.	ASSORT. QTY.	REFILL QTY.
26081	81X	Ext.	3/16" x 1-11/16"	0.028"	8	12
26082	82X	Comp.	1/12" x 1-3/4"	0.047"	8	12
26083	83X	Ext.	7/32" x 2"	0.032"	8	12
26084	84X	Comp.	7/16" x 1-7/16"	0.041"	11	12
26085	85X	Comp.	5/8" x 1-9/16"	0.054"	11	12
26086	86X	Ext.	3/16" x 2"	0.035"	8	12
26087	87X	Comp.	15/64"x1-3/4"	.032"	11	12
26088	88X	Ext.	3/8"x2"	.041"	8	12
26089	89X	Comp.	5/8"x2"	.062"	11	12
26090	90X	Comp.	5/16"x1-1/2"	.035"	11	12
26091	91X	Ext.	9/32"x2-7/16"	.035"	8	12
26092	92X	Comp.	5/16"x1-11/16"	.032"	11	12
26093	93X	Ext.	1/4"x2-5/16"	.020"	8	12
26094	94X	Comp.	1/4" x 2"	0.025"	11	12
26095	95X	Comp.	5/16" x 1-1/2"	0.047"	14	12
26096	96X	Comp.	3/8" x 1-1/2"	0.047"	11	12
26097	97X	Ext.	3/8" x 2-3/16"	0.047"	8	12
26098	98X	Comp.	1/4" x 1-7/16"	0.032"	11	12
26099	99X	Comp.	3/8" x 1-7/8"	0.025"	11	12
26100	100X	Ext.	15/32" x 2-1/4"	0.041"	8	12

Sizes are approximate. Specifications subject to change without notice.



Packaged Extension Springs

S.A.E. 1060-1090 spring steel. Phosphate and oil finish.
Retail package with UPC barcode label.



PART#	REF#	WIRE DIA.	OUTSIDE DIA.	OVERALL LENGTH	BODY LENGTH	MAXIMUM STRETCH	LOAD RATE (LB/IN)	MAX LOAD (LB)	PKG. QTY.
24001	C-1	0.015"	0.125"	1.5"	0.125"	2"	0.65	1.4	2
24005	C-5	0.02"	0.156"	1.5"	1.188"	1.7"	1.50	2.7	2
24013	C-13	0.023"	0.218"	1.5"	1.064"	2.4"	1.10	2.9	2
24019	C-19	0.035"	0.25"	1.5"	1"	1.1"	6.40	8.4	2
24023	C-23	0.025"	0.281"	1.5"	0.938"	3.4"	0.74	2.8	2
24025	C-25	0.02"	0.312"	1.5"	0.876"	7.7"	0.17	1.4	2
24029	C-29	0.028"	0.343"	1.5"	0.814"	3.2"	0.81	3.6	2
24031	C-31	0.028"	0.437"	1.5"	0.626"	4.4"	0.54	2.5	2
24033	C-33	0.047"	0.437"	1.5"	0.626"	1.6"	6.20	11	2
24051	C-51	0.014"	0.125"	1.875"	1.625"	3.3"	0.35	1.3	2
24055	C-55	0.02"	0.156"	1.875"	1.563"	2.7"	1.10	2.2	2
24063	C-63	0.023"	0.218"	1.875"	1.439"	3.4"	0.79	2.9	2
24067	C-67	0.02"	0.25"	1.875"	1.375"	6.4"	0.25	1.7	2
24069	C-69	0.035"	0.25"	1.875"	1.375"	1.5"	4.70	8.4	2
24073	C-73	0.025"	0.281"	1.875"	1.313"	2.8"	0.54	4.7	2
24077	C-77	0.025"	0.313"	1.875"	1.189"	6.8"	0.31	2.3	2
24081	C-81	0.028"	0.437"	1.875"	1"	7.8"	0.30	2.5	2
24083	C-83	0.047"	0.437"	1.875"	1"	2.3"	4.30	11	2
24103	C-103	0.018"	0.125"	2.5"	2.25"	2.2"	0.96	2.5	2
24105	C-105	0.02"	0.156"	2.5"	2.188"	3"	0.81	2.7	2
24111	C-111	0.025"	0.187"	2.5"	2.126"	2.5"	1.50	4.2	2
24115	C-115	0.016"	0.25"	2.5"	2"	15"	0.50	0.87	2
24117	C-117	0.02"	0.25"	2.5"	2"	9"	0.17	1.7	2
24119	C-119	0.035"	0.25"	2.5"	2"	2.1"	3.50	8.4	2
24131	C-131	0.028"	0.437"	2.5"	1.626"	13"	0.18	2.5	2
24133	C-133	0.047"	0.437"	2.5"	1.665"	3.4"	3.00	11	2
24135	C-135	0.062"	0.437"	2"	1.126"	0.87"	17.00	19	2
24139	C-139	0.054"	0.437"	3.5"	2.626"	2.5"	4.00	12	2
24141	C-141	0.072"	0.625"	2.5"	1.375"	1.5"	10.00	19	2
24143	C-143	0.054"	0.562"	3"	1.875"	3.4"	2.30	9.2	2
24155	C-155	0.028"	0.312"	3"	2.375"	7.8"	0.41	3.5	2
24157	C-157	0.025"	0.25"	3.25"	2.75"	6.4"	0.44	3.1	2
24161	C-161	0.035"	0.437"	2.75"	1.875"	5.9"	5.00	3.3	2
24163	C-163	0.047"	0.437"	3.5"	2.626"	3.6"	2.00	8.4	2
24165	C-165	0.08"	0.5"	1.625"	0.625"	2"	66.00	35	2
24171	C-171	0.105"	0.75"	2"	0.5"	2.59"	92.00	60	2
24173	C-173	0.105"	0.75"	2.25"	0.75"	3"	68.00	60	2
24175	C-175	0.105"	0.75"	2.437"	0.9375"	3.3"	47.00	50	2

continued on next page

Sizes are approximate. Specifications subject to change without notice.

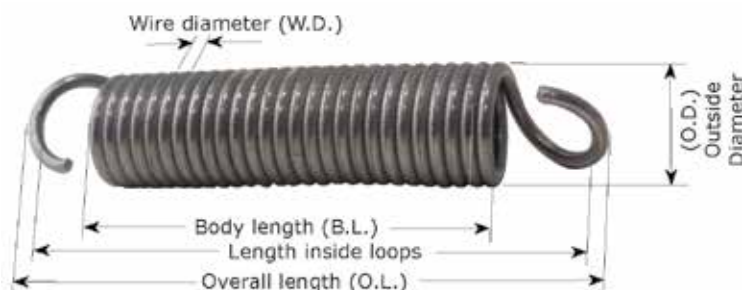




Packaged Extension Springs cont...

PART#	REF#	WIRE DIA.	OUTSIDE DIA.	OVERALL LENGTH	BODY LENGTH	MAXIMUM STRETCH	LOAD RATE (LB/IN)	MAX LOAD (LB)	PKG. QTY.
24177	C-177	0.105"	0.75"	2.625"	1.125"	3.625"	38.00	50	2
24179	C-179	0.072"	0.562"	2.875"	1.75"	4.475"	11.00	22	2
24181	C-181	0.072"	0.625"	3.25"	2"	5.6"	6.40	19	2
24183	C-183	0.047"	0.562"	4"	2.91"	11.6"	0.76	6.5	2
24185	C-185	0.062"	0.75"	3.5"	2"	9"	1.70	11	2
24187	C-187	0.105"	0.75"	2.875"	1.375"	N/A	39.00	60	2
24189	C-189	0.105"	0.75"	3.125"	1.625"	4.3"	33.00	50	2
24191	C-191	0.105"	0.75"	3.75"	2.25"	6"	26.00	50	2
24193	C-193	0.035"	0.375"	4"	3.25"	11.3"	0.47	3.9	2
24205	C-205	0.035"	0.25"	5"	4.5"	8.5"	1.40	6	2
24209	C-209	0.028"	0.375"	4.5"	3.75"	18"	0.15	2.9	2
24215	C-215	0.041"	0.375"	3.75"	3"	7.5"	1.40	6.5	2
24219	C-219	0.041"	0.468"	4.5"	3.564"	13"	0.54	5.2	2
24221	C-221	0.062"	0.5"	4.5"	3.5"	7.7"	4.10	16	2
24223	C-223	0.072"	0.5"	5"	4"	7.3"	8.20	25	2
24227	C-227	0.091"	0.687"	4.75"	3.875"	7.25"	11.00	35	2
24231	C-231	0.072"	0.562"	6"	4.876"	9.8"	4.60	22	2
24233	C-233	0.035"	0.25"	6"	5.5"	10.3"	1.10	6	2
24235	C-235	0.028"	0.312"	6"	5.375"	21"	0.23	3.9	2
24239	C-239	0.047"	0.375"	6.5"	5.75"	11.5"	1.60	10	2
24243	C-243	0.054"	0.625"	6.5"	5.25"	17.5"	0.65	8.3	2
24251	C-251	0.105"	1.125"	16"	13.75"	38"	1.20	31	1
24253	C-253	0.054"	0.562"	16.5"	15.375"	41.5"	0.32	9.2	1
24257	C-257	0.091"	0.812"	4.5"	3.375"	7.8"	7.10	29	2
24259	C-259	0.12"	0.812"	4"	2.375"	1.3"	39.00	66	2
24261	C-261	0.12"	1.062"	5.5"	3.375"	9.7"	9.50	49	1
24263	C-263	0.091"	0.785"	6"	4.875"	11.6"	3.90	26	1
24265	C-265	0.105"	1.062"	7"	4.875"	14.5"	3.70	33	1
24267	C-267	0.162"	1.25"	6.5"	4"	9.5"	26.00	100	1
24269	C-269	0.135"	1"	7"	5"	10"	18.00	75	1
24271	C-271	0.08"	1.062"	8.5"	6.375"	27.5"	0.69	15	1
24273	C-273	0.148"	1.125"	8.5"	6.25"	12.9"	15.00	87	1

continued on next page



Sizes are approximate. Specifications subject to change without notice.





Packaged Extension Springs cont...

PART#	REF#	WIRE DIA.	OUTSIDE DIA.	OVERALL LENGTH	BODY LENGTH	MAXIMUM STRETCH	LOAD RATE (LB/IN)	MAX LOAD (LB)	PKG. QTY.
24275	C-275	0.091"	1.125"	7.5"	6.312"	20.5"	1.30	20	1
24277	C-277	0.091"	0.65"	6.5"	5.5"	10.5"	5.90	31	1
24281	C-281	0.062"	0.375"	5.5"	5"	7.4"	8.90	23	2
24285	C-285	0.035"	0.375"	5"	4.25"	16"	0.43	5.4	2
24287	C-287	0.032"	0.312"	5"	4.375"	14.8"	0.48	5.2	2
24289	C-289	0.035"	0.312"	5"	4.375"	12.4"	0.79	6.6	2
24293	C-293	0.062"	0.375"	6.75"	6"	2.5"	6.80	23	1
24301	C-301	0.135"	1.5"	11.5"	8.5"	26.5"	2.70	47	1
24303	C-303	0.105"	1"	12"	10"	24"	2.40	35	1
24307	C-307	0.135"	1.062"	12"	9.875"	19"	7.70	69	1
24311	C-311	0.041"	0.437"	10.25"	9.375"	27"	0.28	5.5	1
24313	C-313	0.047"	0.5"	8.5"	7.5"	22.5"	0.46	7.2	1
24315	C-315	0.047"	0.437"	8.5"	7.626"	18"	0.73	8.4	1
24317	C-317	0.091"	0.625"	8.5"	7.25"	12.3"	7.70	39	1
24319	C-319	0.054"	0.562"	8.5"	7.376"	20"	0.64	9.2	1
24321	C-321	0.062"	0.625"	8.5"	7.75"	19.5"	0.95	13	1
24323	C-323	0.08"	0.625"	8.5"	7.25"	14"	3.90	27	1
24325	C-325	0.062"	0.875"	8.5"	6.75"	32"	0.33	8.8	1
24329	C-329	0.105"	0.875"	8.5"	6.75"	14"	5.40	41	1
24333	C-333	0.135"	0.875"	9"	7.25"	12"	20.00	87	1
24337	C-337	0.12"	1"	8.5"	6.5"	13"	7.70	52	1
24339	C-339	0.148"	1.25"	10"	7.5"	16.5"	9.20	77	1



Drawbar Spring

S.A.E. 1060-1090 Spring steel. Phosphate & oil finish, UPC barcode label.

PART#	REF#	WIRE DIAMETER	OUTSIDE DIAMETER	OVERALL LENGTH	LOAD RATE (LB/IN)	MAXIMUM LOAD (LB)
24900	4001	0.227"	1-9/16"	7-1/4"	152.78	330.31

Sizes are approximate. Specifications subject to change without notice.



Packaged Compression Springs

S.A.E. 1060-1090 spring steel. Phosphate and oil finish.
Retail package with UPC barcode label.

PART#	REF#	WIRE DIA.	OUTSIDE DIA.	OVERALL LENGTH	SOLID HEIGHT	TOTAL COILS	LOAD RATE (LB/IN)	MAX LOAD (LB)	PKG. QTY.
24500	C-500	0.023"	0.156"	0.562"	0.28	11	19.00	4.5	6
24510	C-510	0.035"	0.25"	0.5"	0.26	7	42.00	6.2	6
24516	C-516	0.011"	0.156"	1"	0.14	12	0.73	0.57	6
24520	C-520	0.016"	0.187"	0.875"	0.27	16	1.30	0.81	6
24526	C-526	0.028"	0.187"	1"	0.48	17	15.00	6.3	6
24530	C-530	0.02"	0.218"	1"	0.24	11	3.30	2.2	6
24532	C-532	0.013"	0.187"	1"	0.14	10	0.99	0.78	6
24550	C-550	0.016"	0.187"	1"	0.2	12	2.00	1.3	6
24554	C-554	0.02"	0.25"	1"	0.2	9	2.80	1.9	6
24556	C-556	0.026"	0.312"	0.625"	0.18	7	7.00	3.1	6
24562	C-562	0.035"	0.25"	1"	0.46	12	21.00	8.9	6
24566	C-566	0.032"	0.375"	0.75"	0.22	6	7.70	3.2	6
24570	C-570	0.014"	0.125"	1.375"	0.34	27	1.60	1.4	6
24576	C-576	0.016"	0.156"	1.375"	0.35	21	1.80	1.6	6
24578	C-578	0.013"	0.187"	1.375"	0.18	12	0.71	0.78	6
24580	C-580	0.028"	0.187"	1.375"	0.65	23	11.00	6.3	6
24582	C-582	0.016"	0.187"	1.375"	0.26	15	1.40	1.3	6
24600	C-600	0.02"	0.218"	1.375"	0.31	15	2.40	2.2	4
24604	C-604	0.023"	0.218"	1.375"	0.39	16	3.90	3.3	4
24608	C-608	0.02"	0.25"	1.375"	0.25	12	2.00	1.9	4
24612	C-612	0.028"	0.281"	1.375"	0.43	15	4.40	4.1	4
24614	C-614	0.041"	0.312"	1.25"	0.62	15	17.00	8.3	4
24624	C-624	0.041"	0.375"	1.125"	0.46	10	13.00	7	4
24632	C-632	0.041"	0.437"	1.062"	0.36	8	11.00	6.1	4
24650	C-650	0.013"	0.218"	1.75"	0.247	18	0.29	0.44	4
24652	C-652	0.028"	0.218"	1.375"	0.53	18	8.10	5.5	4
24660	C-660	0.016"	0.312"	1.75"	0.2	12	0.39	0.61	4
24664	C-664	0.047"	0.343"	1.5"	0.71	15	23.00	11	4
24668	C-668	0.026"	0.375"	1.5"	0.26	10	1.70	2.2	4
24672	C-672	0.035"	0.375"	1.75"	0.54	16	3.70	4.2	4
24676	C-676	0.032"	0.437"	2.125"	0.39	12	2.00	2.8	4
24680	C-680	0.047"	0.312"	2"	1.14	24	18.00	12	4
24690	C-690	0.041"	0.437"	2.25"	0.67	16	4.90	6.1	2
24692	C-692	0.041"	0.625"	1.5"	0.37	9	3.40	3.8	2



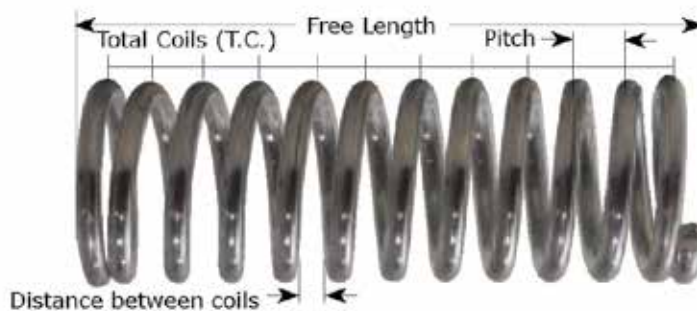
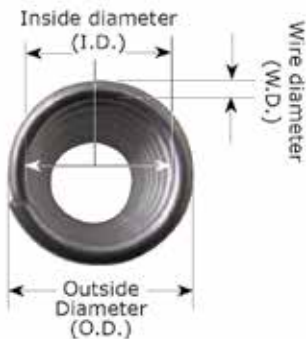
Sizes are approximate. Specifications subject to change without notice.





Packaged Compression Springs cont...

PART#	REF#	WIRE DIA.	OUTSIDE DIA.	OVERALL LENGTH	SOLID HEIGHT	TOTAL COILS	LOAD RATE (LB/IN)	MAX LOAD (LB)	PKG. QTY.
24500	C-500	0.023"	0.156"	0.562"	0.28	11	19.00	4.5	6
24510	C-510	0.035"	0.25"	0.5"	0.26	7	42.00	6.2	6
24516	C-516	0.011"	0.156"	1"	0.14	12	0.73	0.57	6
24520	C-520	0.016"	0.187"	0.875"	0.27	16	1.30	0.81	6
24526	C-526	0.028"	0.187"	1"	0.48	17	15.00	6.3	6
24530	C-530	0.02"	0.218"	1"	0.24	11	3.30	2.2	6
24532	C-532	0.013"	0.187"	1"	0.14	10	0.99	0.78	6
24550	C-550	0.016"	0.187"	1"	0.2	12	2.00	1.3	6
24554	C-554	0.02"	0.25"	1"	0.2	9	2.80	1.9	6
24556	C-556	0.026"	0.312"	0.625"	0.18	7	7.00	3.1	6
24562	C-562	0.035"	0.25"	1"	0.46	12	21.00	8.9	6
24566	C-566	0.032"	0.375"	0.75"	0.22	6	7.70	3.2	6
24570	C-570	0.014"	0.125"	1.375"	0.34	27	1.60	1.4	6
24576	C-576	0.016"	0.156"	1.375"	0.35	21	1.80	1.6	6
24578	C-578	0.013"	0.187"	1.375"	0.18	12	0.71	0.78	6
24580	C-580	0.028"	0.187"	1.375"	0.65	23	11.00	6.3	6
24582	C-582	0.016"	0.187"	1.375"	0.26	15	1.40	1.3	6
24600	C-600	0.02"	0.218"	1.375"	0.31	15	2.40	2.2	4
24604	C-604	0.023"	0.218"	1.375"	0.39	16	3.90	3.3	4
24608	C-608	0.02"	0.25"	1.375"	0.25	12	2.00	1.9	4
24612	C-612	0.028"	0.281"	1.375"	0.43	15	4.40	4.1	4
24614	C-614	0.041"	0.312"	1.25"	0.62	15	17.00	8.3	4
24624	C-624	0.041"	0.375"	1.125"	0.46	10	13.00	7	4
24632	C-632	0.041"	0.437"	1.062"	0.36	8	11.00	6.1	4
24650	C-650	0.013"	0.218"	1.75"	0.247	18	0.29	0.44	4
24652	C-652	0.028"	0.218"	1.375"	0.53	18	8.10	5.5	4
24660	C-660	0.016"	0.312"	1.75"	0.2	12	0.39	0.61	4
24664	C-664	0.047"	0.343"	1.5"	0.71	15	23.00	11	4
24668	C-668	0.026"	0.375"	1.5"	0.26	10	1.70	2.2	4
24672	C-672	0.035"	0.375"	1.75"	0.54	16	3.70	4.2	4
24676	C-676	0.032"	0.437"	2.125"	0.39	12	2.00	2.8	4
24680	C-680	0.047"	0.312"	2"	1.14	24	18.00	12	4



Sizes are approximate. Specifications subject to change without notice.

Packaged Compression Springs cont...

PART#	REF#	WIRE DIA.	OUTSIDE DIA.	OVERALL LENGTH	SOLID HEIGHT	TOTAL COILS	LOAD RATE (LB/IN)	MAX LOAD (LB)	PKG. QTY.
24690	C-690	0.041"	0.437"	2.25"	0.67	16	4.90	6.1	2
24692	C-692	0.041"	0.625"	1.5"	0.37	9	3.40	3.8	2
24700	C-700	0.062"	0.5"	1"	0.54	8	45.00	17	2
24702	C-702	0.054"	0.562"	1"	0.38	7	16	9.5	2
24704	C-704	0.041"	0.5"	1.5"	0.45	10	5.30	5.4	2
24706	C-706	0.072"	0.562"	1.375"	0.74	10	45	22	2
24712	C-712	0.091"	0.687"	1.25"	0.75	8	89	35	2
24714	C-714	0.062"	0.375"	2.25"	1.46	22	34	22	2
24720	C-720	0.062"	0.5"	1.75"	0.85	14	24	17	2
24722	C-722	0.047"	0.5"	2"	0.635	13	7.19	N/A	2
24724	C-724	0.054"	0.437"	2"	0.89	16	16	13	2
24730	C-730	0.047"	0.406"	2.75"	1.12	23	7.30	9.7	2
24736	C-736	0.072"	0.5"	2.75"	1.48	19	28	25	2
24740	C-740	0.08"	0.625"	2.5"	1.14	14	32	27	2
24742	C-742	0.054"	0.625"	2.75"	0.77	14	5.80	9.1	2
24750	C-750	0.08"	0.75"	2"	0.78	10	25	23	2
24752	C-752	0.08"	0.937"	2"	0.67	8	17	19	2
24756	C-756	0.041"	0.718"	3.5"	0.47	11	1.50	3.8	2
24766	C-766	0.054"	0.562"	3"	0.96	17	6.30	10	2
24768	C-768	0.105"	0.812"	2.25"	1.26	11	54.94	N/A	2
24782	C-782	0.08"	0.625"	3"	1.34	16	26	27	2
24792	C-792	0.105"	0.875"	3"	1.39	14	34	43	2
24802	C-802	0.148"	1.375"	4.375"	1.83	13	36	72	1
24806	C-806	0.148"	1.5"	3.25"	1.26	9	43	67	1
24814	C-814	0.135"	1.375"	2.5"	0.98	8	48	55	1
24818	C-818	0.12"	1.125"	4"	1.72	13	26	48	1
24822	C-822	0.148"	0.937"	4"	2.63	12	89	103	2
24826	C-826	0.12"	1"	3.5"	1.71	15	36	54	2
24830	C-830	0.12"	1.125"	3"	1	10	22	34	2
24832	C-832	0.12"	1"	3"	1.41	12	45	54	2
24834	C-834	0.12"	1.187"	2.75"	1.2	9	35	46	2
24836	C-836	0.08"	0.875"	4"	1.28	15	9	20	2
24838	C-838	0.08"	0.75"	3.5"	1.38	16	14	23	2
24850	C-850	0.091"	0.625"	5"	2.64	29	29	38	2
24856	C-856	0.091"	0.75"	6"	2.78	30	13	32	2
24858	C-858	0.072"	0.687"	6"	2.16	29	6.20	18	2
24864	C-864	0.091"	0.875"	6"	2.18	23	9.30	28	1
24874	C-874	0.12"	1.375"	6"	1.08	14	13	40	1
24878	C-878	0.08"	0.625"	9"	3.72	45	8.40	27	1
24892	C-892	0.162"	1.125"	7"	4	24	49	111	1



Sizes are approximate. Specifications subject to change without notice.

What are retaining rings?

Retaining Rings are precision engineered components that are designed to be applied on shafts or in bores and provide a shoulder that accurately positions, locates and retains other parts of an assembly. Many different types of retaining rings have been developed over the years, each a solution to a specific problem. Different types of rings are available to solve issues such as: tolerance take-up, clearance diameter, thrust load capacity, flexible installation, rpm capacity, impact loading, non-removable lock-rings, groove-less push-on fastening and radial installation.

As an engineering concept, the retaining ring is still relatively young and has certainly not yet reached its peak of utilization as a retaining device.

How are retaining rings used?

Retaining Rings work by creating a shoulder that can hold components in place. The retaining shoulder is created when the ring attaches itself to the bore or shaft, typically by snapping into a groove. Ordinarily (however not always) a groove is dug into the shaft or bore, and this groove becomes the seat for the retaining ring.

Retaining rings are designed such that their contact diameter has some interference fit with the groove in which they fit. This creates a “snug” fit between the ring and groove. The term used to describe the amount of interference fit is “cling”.

Cling causes the retaining ring to fit tightly and securely against its groove bottom. Without cling a ring would have a loose fit and would “rattle” in its groove. This lack of cling would decrease the retention capacity of the ring because a “cling-less” ring is free to move radially, creating weak retention points that will ultimately cause the assembly to fail.

Another key factor is the width of the groove. The groove width is slightly larger than the rings thickness, thus creating a snug axial fit. The tight axial fit along with the cling to the groove bottom create a rigid shoulder which can retain thrust loads.



E Retainer Rings

The universally used radially assembled circlip for shafts. The groove is gripped by 3 tabs. Applications in vehicle construction, optical and electronic industry, and light mechanical industry. Cross reference to 1000, 1500, 5133,ms-16633 series. S.A.E. 1060-1090 Spring steel. Phosphate & oil finish. 10 pieces per pkg.



Reference Chart Available

See end of catalogue

PART#	IND#	SHAFT DECIMAL	SHAFT FRACTION	RING OUTSIDE DIA.	RING THICKNESS	GROOVE DIA.	GROOVE DEPTH	GROOVE WIDTH	WEIGHT (LB) /100 PIECES
22860	12	0.125	1/8"	0.23	0.015	0.10	0.02	0.02	0.0087
22861	18	0.188	3/16"	0.335	0.025	0.15	0.02	0.029	0.029
22862	25	0.25	1/4"	0.527	0.025	0.21	0.02	0.029	0.076
22863	31	0.312	5/16"	0.5	0.025	0.25	0.03	0.029	0.057
22864	37	0.375	3/8"	0.66	0.035	0.30	0.04	0.039	0.15
22865	43	0.438	7/16"	0.687	0.035	0.34	0.05	0.039	0.15
22866	50	0.5	1/2"	0.8	0.042	0.40	0.05	0.046	0.25
22867	62	0.625	5/8"	0.94	0.042	0.49	0.07	0.046	0.32
22868	75	0.75	3/4"	1.12	0.05	0.58	0.09	0.056	0.58
22869	87	0.875	7/8"	1.3	0.05	0.68	0.10	0.056	0.76
22870	98	0.984	1"	1.5	0.05	0.84	0.08	0.056	0.92
22871	118	1.188	1-3/16"	1.626	0.062	1.08	0.05	0.068	1.13
22872	137	1.375	1-3/8"	1.875	0.062	1.23	0.07	0.068	1.54

Sizes are approximate. Specifications subject to change without notice.



Internal Retainer Rings

The universally applicable rings for shafts and bores. Applications in all branches of industry and machine, instrument and vehicle construction. Cross reference to 1300, 3000, 5000, HO, MS-16625 series. S.A.E. 1060-1090 Spring steel. Phosphate and oil finish.

PART#	IND#	BORE DECIMAL	BORE FRACTION	RING OUTSIDE DIAMETER	RING THICKNESS	GROOVE DIAMETER	GROOVE DEPTH	GROOVE WIDTH	PKG. QTY.
22873	25	0.25	1/4"	0.28	0.015	0.27	0.01	0.02	10
22874	31	0.312	5/16"	0.346	0.015	0.33	0.01	0.02	10
22875	37	0.375	3/8"	0.415	0.025	0.40	0.01	0.029	10
22876	43	0.438	7/16"	0.482	0.025	0.46	0.01	0.029	10
22878	50	0.5	1/2"	0.548	0.035	0.53	0.02	0.039	10
22879	56	0.562	9/16"	0.62	0.035	0.60	0.02	0.039	10
22880	62	0.625	5/8"	0.694	0.035	0.67	0.02	0.039	10
22881	68	0.688	11/16"	0.763	0.035	0.73	0.02	0.039	10
22882	75	0.75	3/4"	0.831	0.035	0.80	0.02	0.039	10
22884	87	0.875	7/8"	0.971	0.042	0.93	0.03	0.046	10
22885	93	0.938	15/16"	1.041	0.042	1.00	0.03	0.046	10
22886	100	1	1"	1.111	0.042	1.07	0.03	0.046	10
22888	106	1.062	1-1/16"	1.18	0.05	1.13	0.03	0.056	10
22889	112	1.125	1-1/8"	1.249	0.05	1.20	0.04	0.056	10
22890	118	1.188	1-3/16"	1.319	0.05	1.26	0.04	0.056	10
22891	125	1.25	1-1/4"	1.388	0.05	1.33	0.04	0.056	10
22892	131	1.312	1-5/16"	1.456	0.05	1.40	0.04	0.056	10
22893	137	1.375	1-3/8"	1.526	0.05	1.46	0.04	0.056	10
22894	143	1.438	1-7/16"	1.596	0.05	1.53	0.05	0.056	10
22895	150	1.5	1-1/2"	1.66	0.05	1.59	0.05	0.056	10
22896	156	1.562	1-9/16"	1.734	0.062	1.66	0.05	0.068	10
22897	162	1.625	1-5/8"	1.804	0.062	1.73	0.05	0.068	10
22900	175	1.75	1-3/4"	1.942	0.062	1.86	0.05	0.068	10
22901	181	1.812	1-13/16"	2.012	0.062	1.92	0.06	0.068	10
22902	187	1.875	1-7/8"	2.072	0.062	1.99	0.06	0.068	10
22903	193	1.938	1-15/16"	2.141	0.062	2.06	0.06	0.068	10
22904	200	2	2"	2.21	0.062	2.12	0.06	0.068	10
22905	206	2.062	2-1/16"	2.28	0.078	2.19	0.06	0.086	5
22906	212	2.125	2-1/8"	2.35	0.078	2.25	0.06	0.086	5
22907	225	2.25	2-1/4"	2.49	0.078	2.38	0.07	0.086	5
22908	237	2.375	2-3/8"	2.63	0.078	2.52	0.07	0.086	5
22909	244	2.44	2-7/16"	2.702	0.078	2.58	0.07	0.086	5
22910	250	2.5	2-1/2"	2.775	0.078	2.65	0.07	0.086	5
22911	262	2.625	2-5/8"	2.91	0.093	2.78	0.08	0.103	5
22912	268	2.688	2-11/16"	2.98	0.093	2.85	0.08	0.103	5
22913	275	2.75	2-3/4"	3.05	0.093	2.91	0.08	0.103	5
22914	281	2.812	2-13/16"	3.121	0.093	2.98	0.08	0.103	5
22915	287	2.875	2-7/8"	3.191	0.093	3.05	0.09	0.103	2
22916	300	3	3"	3.325	0.093	3.18	0.09	0.103	2
22917	325	3.25	3-1/4"	3.623	0.109	3.45	0.10	0.12	2
22918	350	3.5	3-1/2"	3.89	0.109	3.71	0.11	0.12	2
22919	400	4	4"	4.424	0.109	4.24	0.12	0.12	2
22920	450	4.5	4-1/2"	4.94	0.109	4.74	0.12	0.12	2
22921	500	5	5"	5.485	0.109	5.26	0.13	0.12	2
22922	550	5.5	5-1/2"	6.066	0.125	5.77	0.14	0.139	2
22923	600	6	6"	6.62	0.125	6.27	0.14	0.139	2

Sizes are approximate. Specifications subject to change without notice.



Reference Chart Available

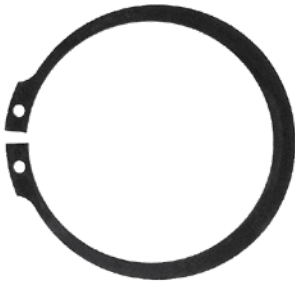
See end of catalogue



External Retainer Rings (Basic)

The universally applicable rings for shafts and bores. Applications in all branches of industry and machine, instrument and vehicle construction. Cross reference to 1300, 3000, 5000, HO, MS-16625 series. S.A.E. 1060-1090 spring steel. Phosphate and oil finish.

PART#	IND#	SHAFT DECIMAL	SHAFT FRACTION	RING OUTSIDE DIAMETER	RING THICKNESS	GROOVE DIAMETER	GROOVE DEPTH	GROOVE WIDTH	PKG. QTY.
22924	18	0.188	3/16"	0.168	0.015	0.18	0.01	0.018	10
22925	25	0.25	1/4"	0.225	0.025	0.23	0.01	0.029	10
22926	31	0.312	5/16"	0.281	0.025	0.29	0.01	0.029	10
22928	37	0.375	3/8"	0.338	0.025	0.35	0.01	0.029	10
22929	43	0.438	7/16"	0.395	0.025	0.41	0.01	0.029	10
22931	50	0.5	1/2"	0.461	0.035	0.47	0.02	0.039	10
22932	56	0.562	9/16"	0.521	0.035	0.53	0.02	0.039	10
22933	59	0.594	19/32"	0.55	0.035	0.56	0.02	0.039	10
22934	62	0.625	5/8"	0.579	0.035	0.59	0.02	0.039	10
22935	66	0.672	43/64"	0.621	0.035	0.63	0.02	0.039	10
22936	68	0.688	11/16"	0.635	0.042	0.65	0.02	0.046	10
22937	75	0.75	3/4"	0.693	0.042	0.70	0.02	0.046	10
22938	81	0.812	13/16"	0.751	0.042	0.76	0.03	0.046	10
22939	87	0.875	7/8"	0.81	0.042	0.82	0.03	0.046	10
22940	93	0.938	15/16"	0.867	0.042	0.88	0.03	0.046	10
22942	100	1	1"	0.925	0.042	0.94	0.03	0.046	10
22944	106	1.062	1-1/16"	0.982	0.05	1.00	0.03	0.056	10
22945	112	1.125	1-1/8"	1.041	0.05	1.06	0.03	0.056	10
22946	118	1.188	1-3/16"	1.098	0.05	1.12	0.04	0.056	10
22947	125	1.25	1-1/4"	1.156	0.05	1.18	0.04	0.056	10
22948	131	1.312	1-5/16"	1.214	0.05	1.23	0.04	0.056	10
22949	137	1.375	1-3/8"	1.272	0.05	1.29	0.04	0.056	10
22950	143	1.438	1-7/16"	1.333	0.05	1.35	0.04	0.056	10
22951	150	1.5	1-1/2"	1.387	0.05	1.41	0.05	0.056	10
22952	156	1.562	1-9/16"	1.446	0.062	1.47	0.05	0.068	10
22953	162	1.625	1-5/8"	1.503	0.062	1.53	0.05	0.068	10
22954	168	1.688	1-11/16"	1.56	0.062	1.59	0.05	0.068	10
22955	175	1.75	1-3/4"	1.618	0.062	1.65	0.05	0.068	10
22956	187	1.875	1-7/8"	1.735	0.062	1.77	0.05	0.06	10
22957	196	1.969	1-31/32"	1.819	0.062	1.86	0.06	0.068	10
22958	200	2	2"	1.85	0.062	1.89	0.06	0.068	10
22960	212	2.125	2-1/8"	1.964	0.078	2.00	0.06	0.086	5
22962	225	2.25	2-1/4"	2.081	0.078	2.12	0.07	0.086	5
22963	237	2.375	2-3/8"	2.197	0.078	2.24	0.07	0.086	5
22964	243	2.438	2-7/16"	2.255	0.078	2.30	0.07	0.086	5
22965	250	2.5	2-1/2"	2.313	0.078	2.36	0.07	0.086	5
22966	262	2.625	2-5/8"	2.428	0.078	2.48	0.07	0.086	5
22967	275	2.75	2-3/4"	2.543	0.093	2.60	0.07	0.103	2
22968	287	2.875	2-7/8"	2.659	0.093	2.72	0.08	0.1	2
22970	300	3	3"	2.775	0.093	2.84	0.08	0.1	2
22971	350	3.5	3-1/2"	3.237	0.109	3.32	0.09	0.12	2
22972	400	4	4"	3.7	0.109	3.79	0.10	0.12	2
22973	450	4.5	4-1/2"	4.223	0.109	4.31	0.10	0.12	2
22974	500	5	5"	4.692	0.109	4.79	0.11	0.12	2
22975	600	6	6"	5.631	0.125	5.75	0.13	0.139	2



Reference Chart Available

See end of catalogue

Sizes are approximate. Specifications subject to change without notice.

