

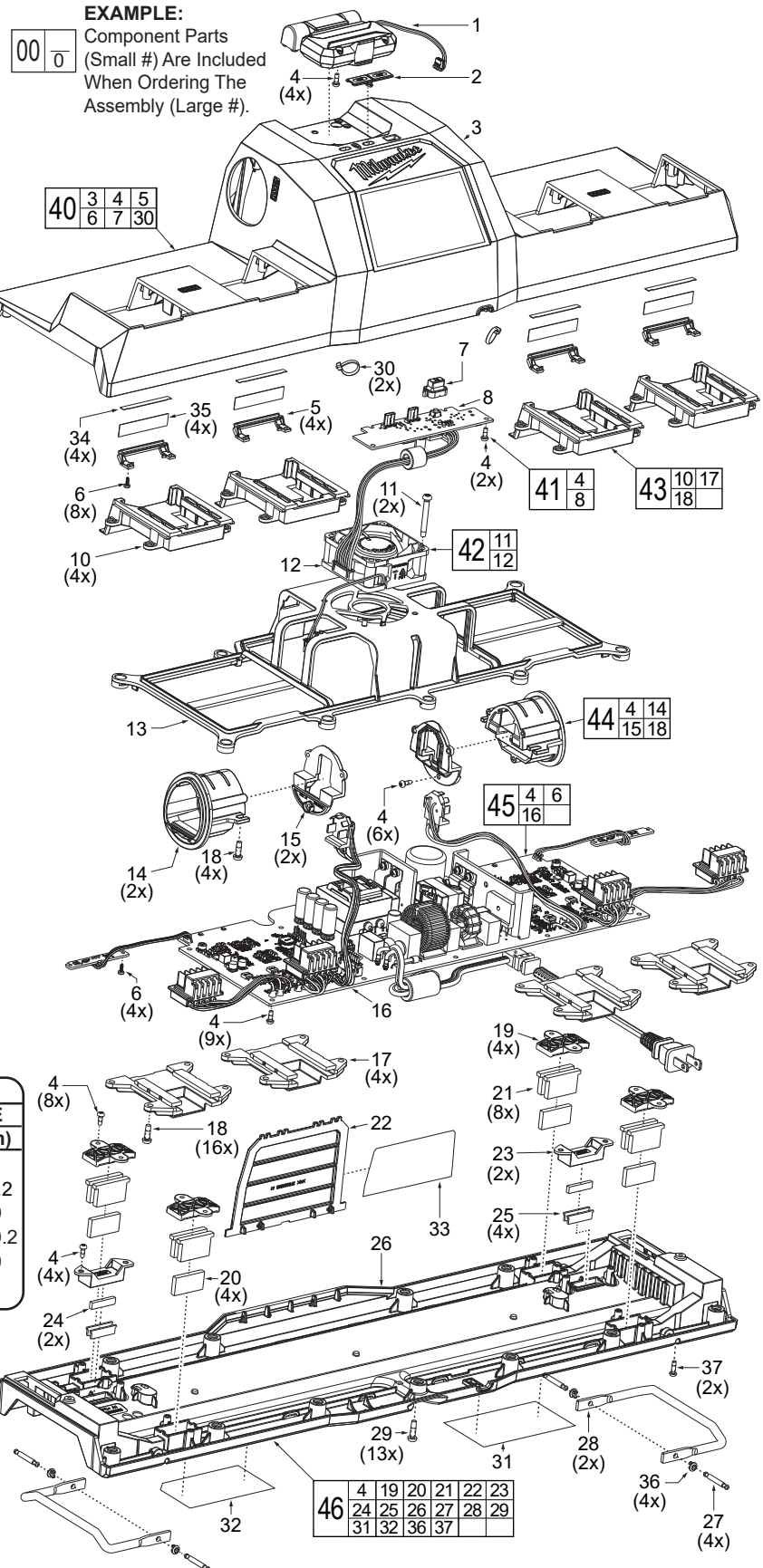


SERVICE PARTS LIST

BULLETIN NO.
PN0004150

SPECIFY CATALOG NO. AND SERIAL NO. WHEN ORDERING PARTS		REVISED BULLETIN	DATE
M18™ and M12™ Gangbox Rapid Charger			April 2025
CATALOG NO.	48-59-1804	SERIAL NO.	P97A
		WIRING INSTRUCTION See Page 2	

FIG.	PART NO.	DESCRIPTION OF PART	NO. REQ.
1	23-94-5385	LED Work Light Assembly	(1)
2	31-15-2220	Dual USB-C Cover	(1)
3	-----	Top Housing	(1)
4	05-81-1195	M3 x 8mm Pan Hd. T-10 Screw	(33)
5	-----	Battery Indicator Lens	(4)
6	05-88-0083	M2.2 x .98 PT T-8 Screw	(12)
7	-----	Rubber Button	(1)
8	-----	PCB Subsystem Board Assembly	(1)
10	-----	M18 Interface Rail	(4)
11	06-82-0088	M4 x 1.411 Pan Hd. T-20 Screw	(2)
12	-----	Fan Assembly	(1)
13	43-40-0510	Main PCBA Frame	(1)
14	-----	M12 Interface	(2)
15	-----	M12 Interface Cover	(2)
16	-----	Main PCBA Assembly	(1)
17	-----	M18 Interface Back Plate	(4)
18	06-82-0032	M4 x 12mm Pan Hd. T-20 Screw	(20)
19	-----	Large Magnet Bracket	(4)
20	-----	Large Magnet	(4)
21	-----	Large Billet	(8)
22	31-50-2595	Top Housing Plate	(1)
23	-----	Small Magnet Bracket	(2)
24	-----	Small Magnet	(2)
25	-----	Small Billet	(4)
26	-----	Bottom Housing	(1)
27	-----	Lever Pin	(4)
28	-----	Lever	(2)
29	05-74-0226	M4 x 14mm T-20 Pan Hd. Blk Screw	(13)
30	-----	Zip Tie	(2)
31	10-22-1760	Warning Label (Fr/Sp)	(1)
32	12-20-9690	Service Nameplate	(1)
33	10-22-1765	Warning Label (English)	(1)
34	-----	Small Shading Label	(4)
35	-----	Large Shading Label	(4)
36	-----	Friction Grommet	(4)
37	06-82-3002	M3 x 10mm Pan Hd. T-10 Screw	(2)
40	14-46-9766	Top Housing Kit	(1)
41	14-46-9767	Subsystem Board Kit	(1)
42	14-46-9768	Fan Kit	(1)
43	14-46-9769	M18 Interface Rails Kit	(1)
44	14-46-9770	M12 Interface Kit	(1)
45	14-46-9771	PCBA Board Kit	(1)
46	14-46-9772	Bottom Housing Kit	(1)

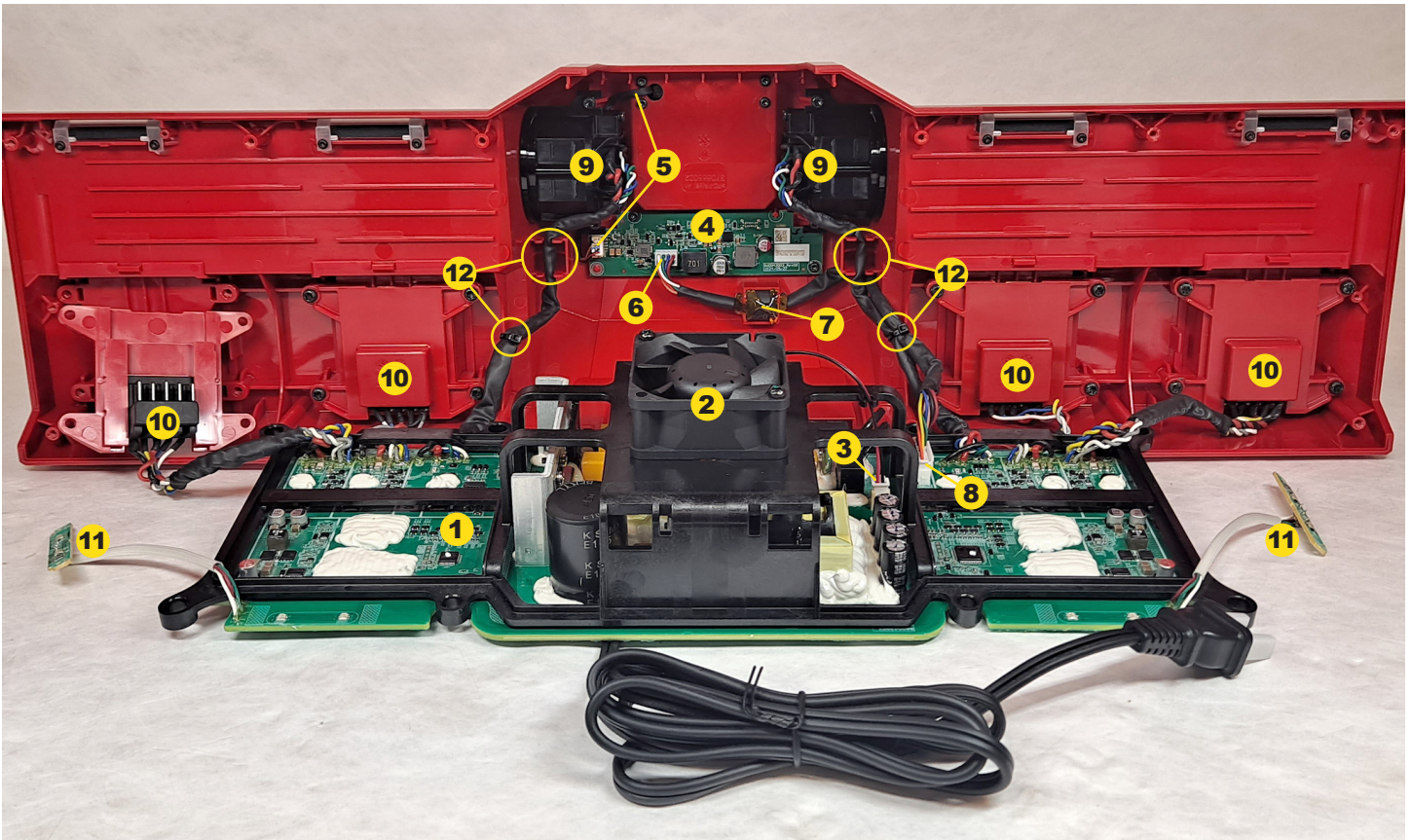


TORQUE SPECIFICATIONS				
FIG.	PART NO.	WHERE USED	SEAT TORQUE	
			(kgf-cm)	(lb-in)
4	05-81-1195	Work Light/Magnets/M12 Interface	6-8	5-7
6	05-88-0083	Battery Indicator Lens/PCBA	1.5-2.5	1.3-2.2
11	06-82-0088	Fan Assy.	9-11	8-10
18	06-82-0032	M12/M18 Interface	10.3-11.7	8.9-10.2
29	05-74-0226	Bottom Housing	9-12	8-10
37	06-82-3002	Bottom Housing	6-8	5-7

FIGS. NOTES

31-35 A clean, dry surface is essential for proper performance for any adhesive system. The area intended for application of any adhesive label or nameplate must be prepared by cleaning with isopropyl alcohol. The solvent is to be applied with a clean, lint free applicator and the surface allowed to dry before applying the label or nameplate.

M18 & M12 Gangbox Rapid Charger Wiring



1. Main PCBA Assembly
2. Fan Assembly
3. Fan Assembly to PCBA Connector
4. Subsystem Board Assembly
5. LED Work Light Assembly to Subsystem Board Connector
6. PCBA to Subsystem Board Connector
7. Ferrite Bead - Apply hot glue to hold in place
8. Subsystem Board to PCBA Connector
9. M12 Terminal Block / Interface
10. M18 Terminal Block / Interface Rails
11. Battery Indicator
12. M12 Interface Wires - Add zip tie and route within traps as shown
13. AC Power Cord - Place cord and ferrite bead into channels

